



Chick-fil-A
5200 Buffington Road
Atlanta, Georgia 30349-2998

INTERPLAN
ARCHITECTURE
ENGINEERING
INTERIOR DESIGN
PROJECT MANAGEMENT

604 COURTLAND STREET SUITE 100
ORLANDO, FLORIDA 32804
PH 407.645.5008
FX 407.629.9124

SEAL:
THIS DOCUMENT IS NOT FOR CONSTRUCTION
UNLESS THE ARCHITECT OR ENGINEER'S
SIGNATURE AND SEAL APPEAR BELOW

CHICK-FIL-A
SAR South Cobb Drive FSR
3100 South Cobb Dr SE, Smyrna, GA 30080

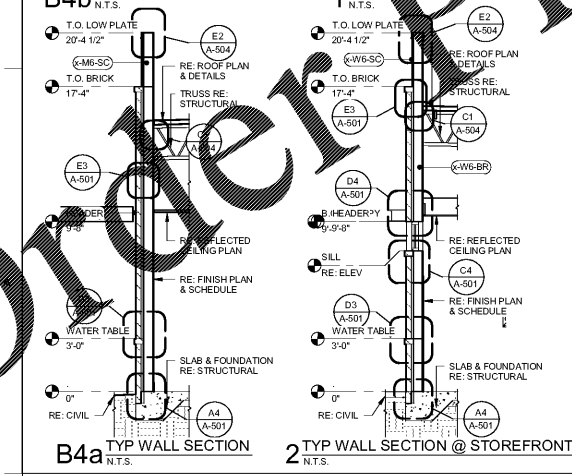
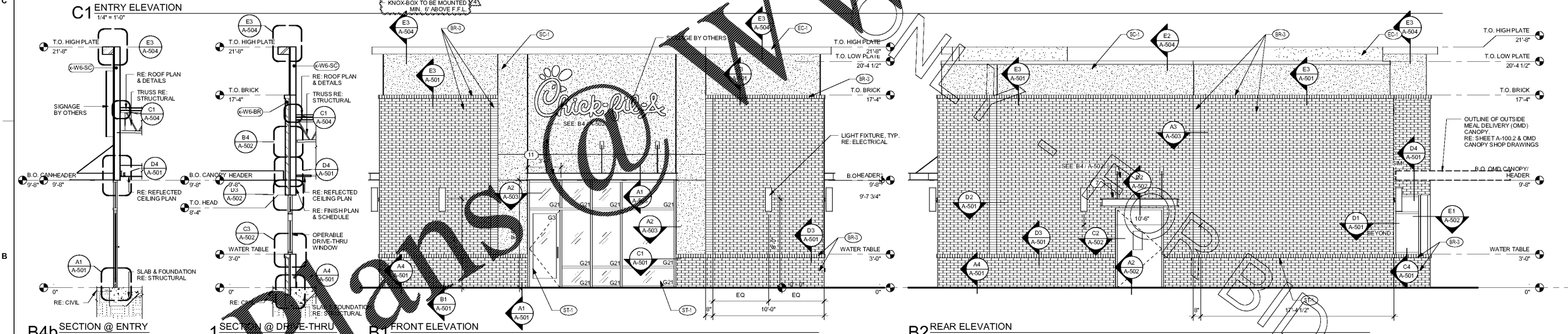
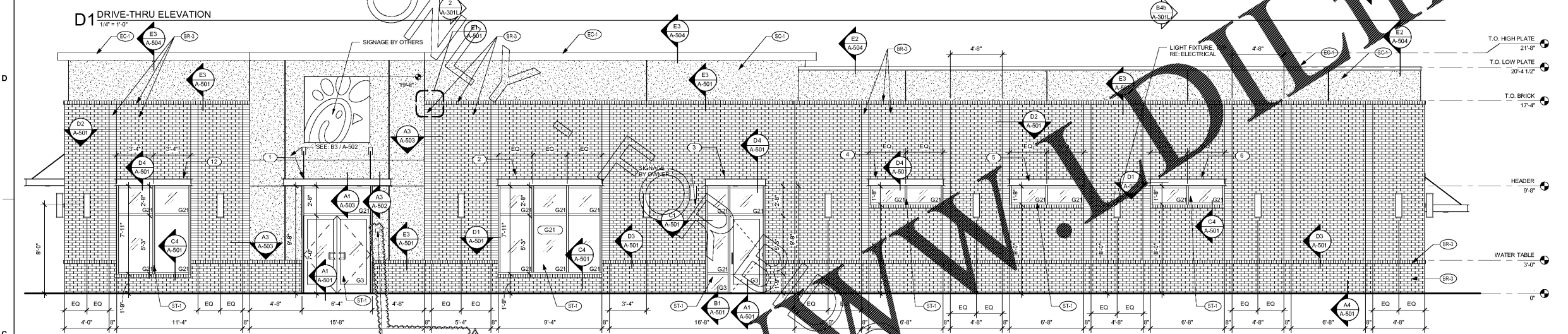
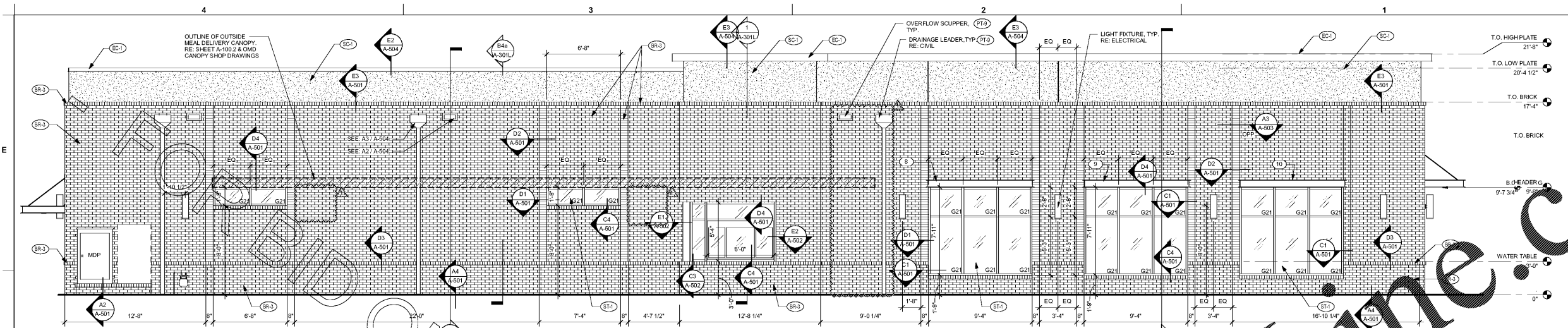
FSR# 00810

REVISION SCHEDULE		
NO.	DATE	DESCRIPTION
1	11/06/17	COORDINATION REVISIONS
4	12/18/17	CITY COMMENTS

CONSULTANT PROJECT # 2017.0165
PRINTED FOR BID
DATE September 09, 2017
DRAWN BY AD

Information contained on this drawing and to all rights therein
is the property of Interplan Architecture, Inc. and shall not be
reproduced, stored in a retrieval system, or transmitted in any
manner without the prior written or verbal consent from
Interplan Architecture, Inc.

SHEET
EXTERIOR ELEVATIONS
AND SECTIONS
SHEET NUMBER
A-301L



GLAZING SCHEDULE				
MARK	THICKNESS	TYPE	TINT	REMARKS
G1	1/4"	TEMPERED	CLEAR	
G3	1/4"	LAMINATED	CLEAR	
G11	1/2"	TEMPERED	CLEAR	BUTT GLAZE
G21	1"	TEMPERED	CLEAR - LOW-E	PROVIDE THERMALLY BROKEN AT EXTERIOR LOCATIONS
G31	1"	TEMPERED	ACID ETCHED - LOW-E	PROVIDE THERMALLY BROKEN AT EXTERIOR LOCATIONS

Notes:
1. All glass to be G21 U.N.O.
2. Photolytical Storefront System (Mullions & Glazing combined) U-values: 0.46. SHGC: 0.28 (Clear Glass - Tinted glass will not be accepted)
3. Site Adapt Architect of Record responsible for updating glazing values per local Code Requirements. RE: Specifications, Section 08900
4. Site Adapt Architect of Record to verify the use of G31 per local site conditions to limit visibility to sensitive areas (such as Kitchen and Office).

FINISH SCHEDULE - EXTERIOR					
MARK	DESCRIPTION	MANUFACTURER	MODEL NAME	COLOR	NOTE
BR-3	BRICK VENEER	BORAL BRICK	MODULAR	CITADEL	MORTAR: ARGOS SAN TAN
EC-1	PARAPET WALL COPING	DUROLAST / EXCEPTIONAL METALS		DARK BRONZE (MATT)	
PT-7	EXTERIOR PAINT	SHERWIN WILLIAMS	SHER-CRYL HIGH PERFORMANCE ACRYLIC 1B66-350	ROOKWOOD	REFUSE ENCLOSURE, FINISH: SEMI-GLOSS ON DOOR FRAMES, SATIN ON WALLS
PT-9	EXTERIOR PAINT	SHERWIN WILLIAMS	SHER-CRYL HIGH PERFORMANCE ACRYLIC 1B66-350	DARK BRONZE	FINISH: SEMI-GLOSS
SC-1	STUCCO	STO	STO WHITE	FINISH: SAND MEDIUM	
ST-1	STOREFRONT	KAWNEER	TRIFAB 451	DARK BRONZE (MATT)	SEE G004 FOR APPROVED EQUAL VENDORS

WALL TYPES SCHEDULE - EXTERIOR	
MARK	DESCRIPTION (DOES NOT INCLUDE FINISHES)
G21	BRICK ON AIR SPACE ON 30# FELT ON EXTERIOR SHEATHING ON 6 INCH METAL STUD FRAMING ON INTERIOR SHEATHING
M6-BR	STUCCO SYSTEM AS DETAILED ON EXTERIOR SHEATHING ON 6 INCH METAL STUD FRAMING ON INTERIOR SHEATHING
M6-SC	STUCCO SYSTEM AS DETAILED ON EXTERIOR SHEATHING ON 6 INCH METAL STUD FRAMING ON INTERIOR SHEATHING
W6-BR	BRICK ON AIR SPACE ON 30# FELT ON EXTERIOR SHEATHING ON 2x6 WD STUD FRAMING ON INTERIOR SHEATHING
W6-SC	STUCCO SYSTEM AS DETAILED ON EXTERIOR SHEATHING ON 2x6 WD STUD FRAMING ON INTERIOR SHEATHING

EXTERIOR CANOPY SCHEDULE - P12 LS LRG							
Mark	Description	Count	Depth	Overall Thickness	Tie Back Mounting	Integral Lighting	
1	Exterior Canopy	1	10'-8"	4'-0"	8"	2'-6"	No
2	Exterior Canopy	1	9'-9"	1'-0"	8"	0"	No
3	Exterior Canopy	1	5'-0"	1'-0"	8"	0"	Yes
4	Exterior Canopy	1	7'-1"	1'-0"	8"	0"	No
5	Exterior Canopy	1	7'-1"	1'-0"	8"	0"	No
6	Exterior Canopy	1	7'-1"	1'-0"	8"	0"	No
7	Exterior Canopy	1	7'-1"	4'-0"	8"	2'-6"	Yes
8	Exterior Canopy	1	9'-0"	1'-0"	8"	0"	No
9	Exterior Canopy	1	9'-0"	1'-0"	8"	0"	No
10	Exterior Canopy	1	9'-0"	1'-0"	8"	0"	No
11	Exterior Canopy	1	13'-9"	4'-0"	8"	2'-6"	Yes
12	Exterior Canopy	1	7'-1"	1'-0"	8"	0"	No
Grand total		12					

2/5/2018 2:27:59 PM