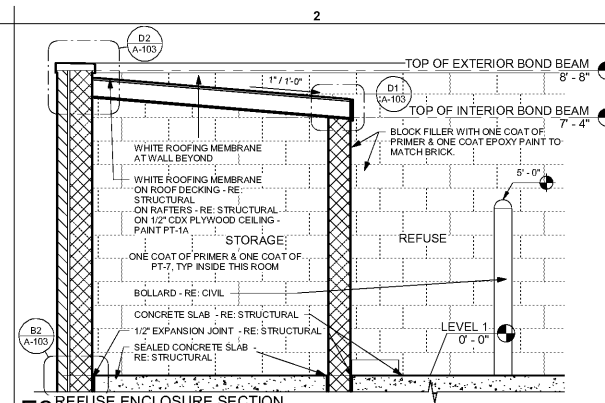
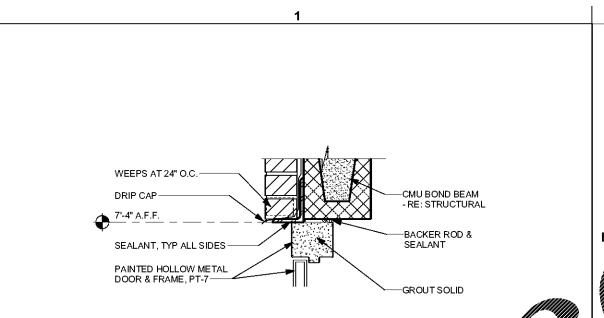


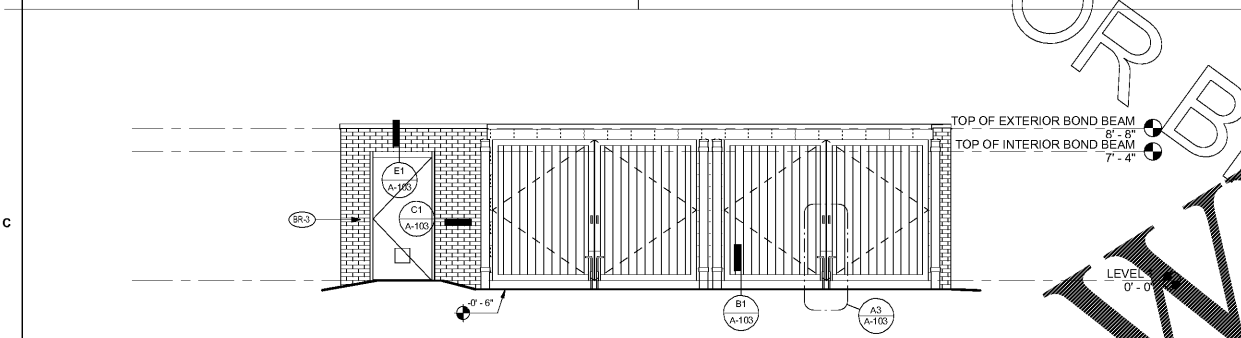
D4 REFUSE ENCLOSURE FLOOR PLAN - SCUUPPER  
1/4" = 1'-0"



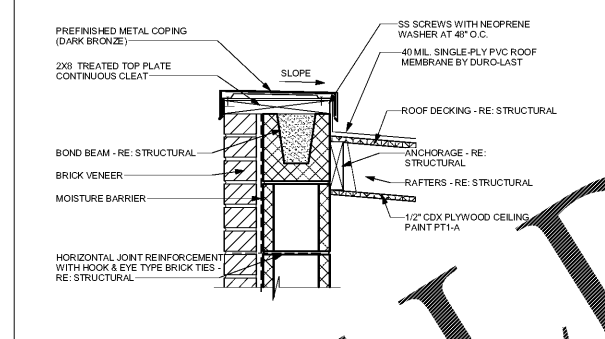
E2 REFUSE ENCLOSURE SECTION  
1/2" = 1'-0"



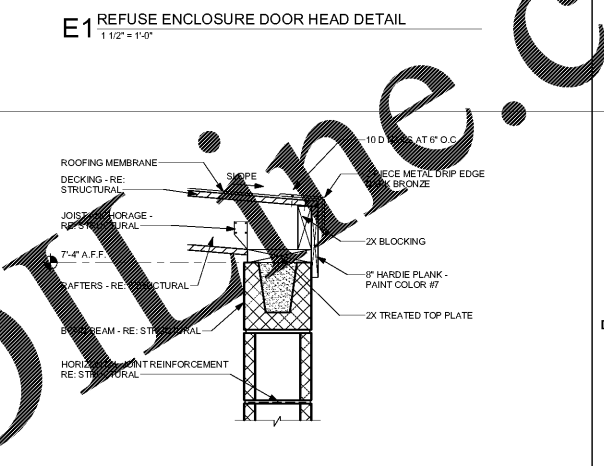
E1 REFUSE ENCLOSURE DOOR HEAD DETAIL  
1 1/2" = 1'-0"



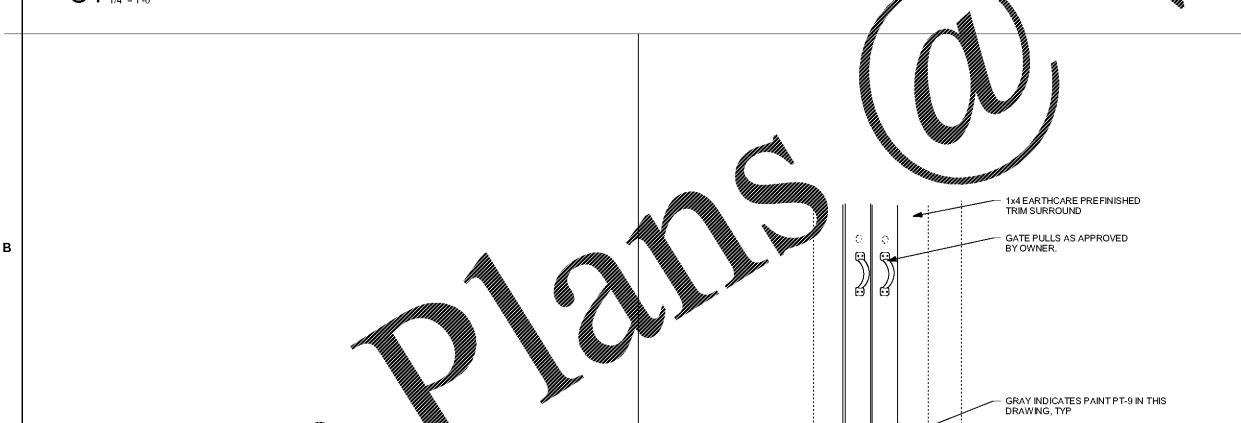
C4 REFUSE ENCLOSURE FRONT ELEVATION  
1/4" = 1'-0"



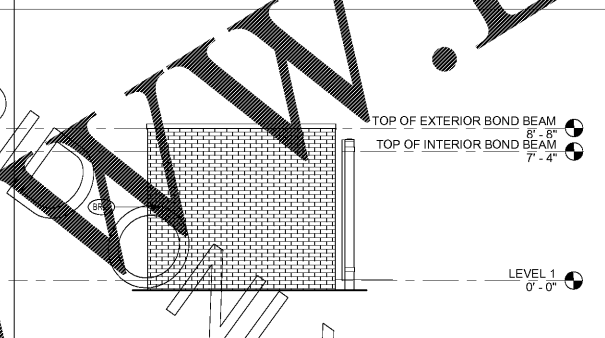
D2 REFUSE ENCLOSURE ROOF EDGE DETAIL  
1 1/2" = 1'-0"



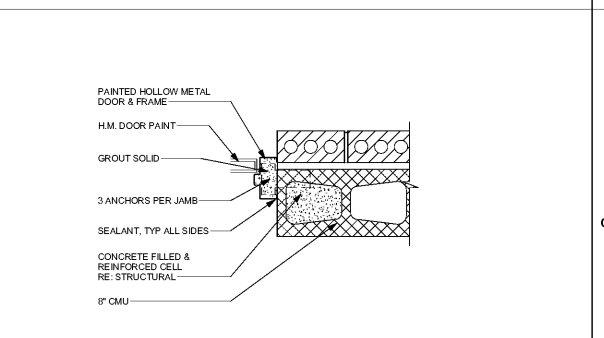
D1 REFUSE ENCLOSURE DRIP EDGE  
1 1/2" = 1'-0"



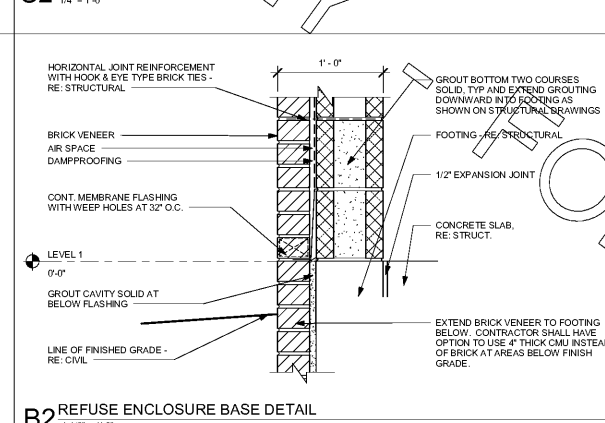
C1 REFUSE ENCLOSURE DOOR JAMB DETAIL  
1 1/2" = 1'-0"



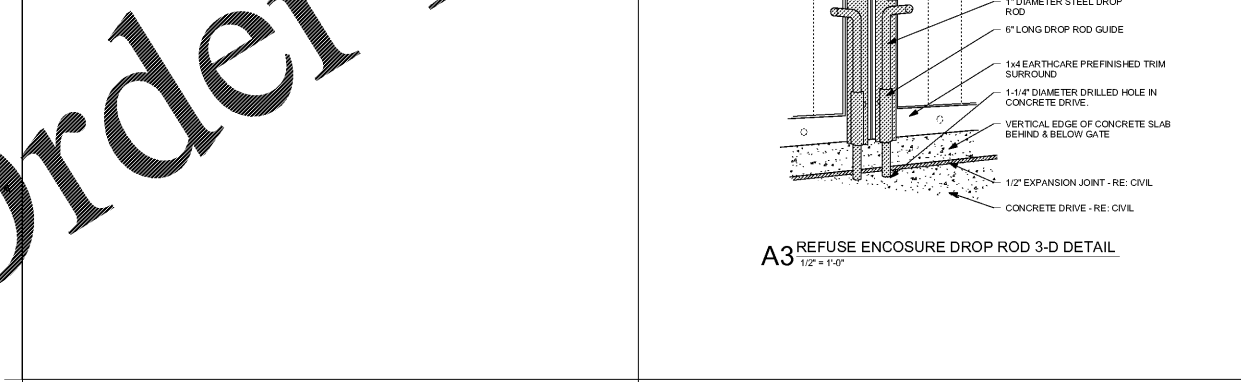
C2 REFUSE ENCLOSURE SIDE ELEVATION  
1/4" = 1'-0"



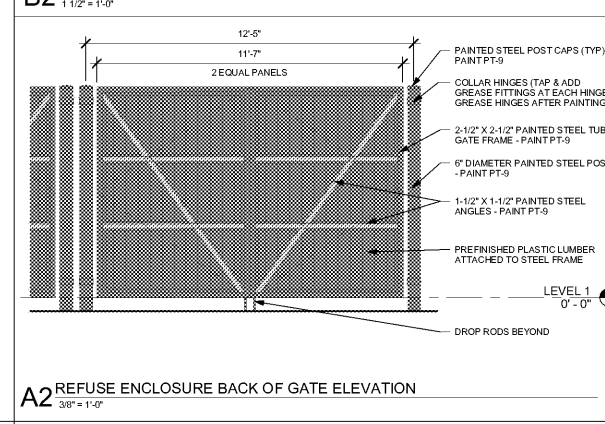
B1 REFUSE PAD AT CONCRETE PAVING DETAIL  
3/4" = 1'-0"



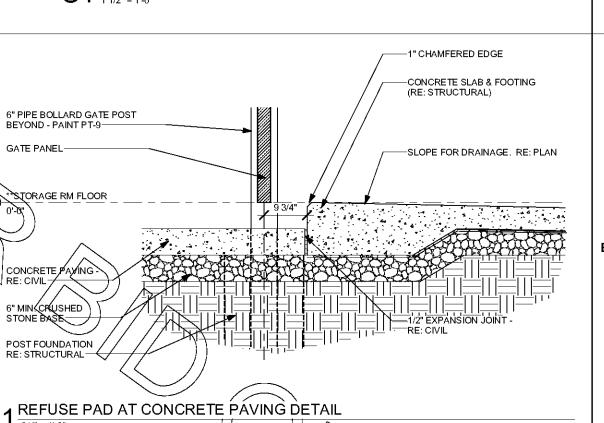
B2 REFUSE ENCLOSURE BASE DETAIL  
1 1/2" = 1'-0"



A3 REFUSE ENCLOSURE DROP ROD 3-D DETAIL  
1/2" = 1'-0"



A2 REFUSE ENCLOSURE BACK OF GATE ELEVATION  
3/8" = 1'-0"



B1 REFUSE ENCLOSURE NOTES



**Chick-fil-A**  
5200 Buffington Road  
Atlanta, Georgia 30349-2998

**INTERPLAN**  
ARCHITECTURE  
ENGINEERING  
INTERIOR DESIGN  
PROJECT MANAGEMENT

604 COURTLAND STREET  
SUITE 100  
ORLANDO, FLORIDA 32804  
PH 407.645.5008  
FX 407.629.9124

SEAL:  
THIS DOCUMENT IS NOT FOR CONSTRUCTION  
UNLESS THE ARCHITECT OR ENGINEER'S  
SIGNATURE AND SEAL APPEAR BELOW.

**CHICK-FIL-A**  
SAR South Cobb Drive FSR  
3100 South Cobb DR SE, Smyrna, GA 30080

**FSR# 00810**

REVISION	SCHEDULE	NO.	DATE	DESCRIPTION

CONSULTANT PROJECT # 2017.0165  
PRINTED FOR BID  
DATE September 06, 2017  
DRAWN BY AD

Information contained on this drawing and in all rights there included for which no part may be reproduced or transmitted in any form or by any means electronic or mechanical, including photocopying, recording, or by any information storage and retrieval system, without the prior written permission of the architect.

SHEET  
REFUSE ENCLOSURE

SHEET NUMBER  
**A-103**

Order Plans @

2/5/2018 10:35:35 PM

WWW.LDLINE.COM

BIDD ONLY

BIDD ONLY

BIDD ONLY

BID