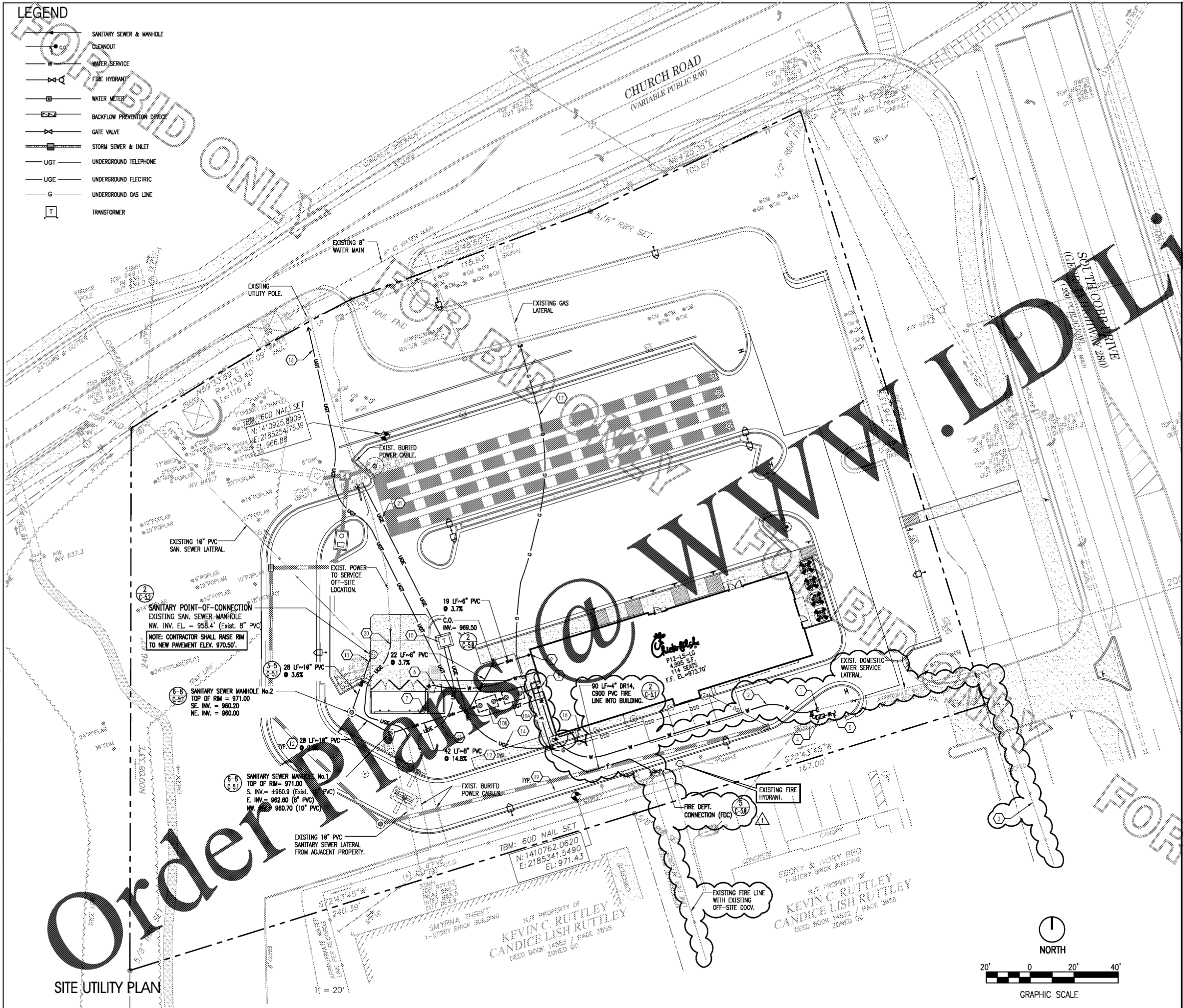


LEGEND

- SANITARY SEWER & MANHOLE
- CLEANOUT
- WATER SERVICE
- FIRE HYDRANT
- WATER METER
- BACKFLOW PREVENTION DEVICE
- GATE VALVE
- STORM SEWER & INLET
- UGT UNDERGROUND TELEPHONE
- UGE UNDERGROUND ELECTRIC
- G UNDERGROUND GAS LINE
- TRANSFORMER



PLAN NOTES

- 1 CONNECT PROPOSED 2" POLYETHYLENE (PE) DOMESTIC WATER SERVICE TO EXISTING DOMESTIC SERVICE STUB-OUT.
NOTE: CONTRACTOR SHALL FIELD VERIFY EXACT LOCATION AND SIZE PRIOR TO START OF CONSTRUCTION. REPORT CONFLICTS TO ENGINEER.
- 2 155 LF-2" NEW POLYETHYLENE (PE) DOMESTIC WATER SERVICE INTO BUILDING.
- 3 EXISTING DOMESTIC WATER LINE FROM EXISTING OFF-SITE METER AND BACKFLOW PREVENTER ASSEMBLY.
NOTE: CONTRACTOR SHALL FIELD VERIFY EXACT LOCATION AND SIZE PRIOR TO START OF CONSTRUCTION. REPORT CONFLICTS TO ENGINEER.
- 4 CONNECT PROPOSED 1" IRRIGATION REDUCED PRESSURE ZONE (RPZ) BACKFLOW PREVENTER ASSEMBLY WITH GATE VALVE TO PROPOSED 2" DOMESTIC SERVICE WITH 1" x 2" TEE.
- 5 1" IRRIGATION LINE (REFER TO IRRIGATION PLAN, SHEET L-2.0 FOR CONTINUATION).
- 6 62 LF-3/4" POLYETHYLENE COLD WATER LINE TO DUMPSTER POST LOCANT.
- 7 1" NON-FREEZE POST HYDRANT (REFER TO BELOW SLAB DRAWING, SHEET B-1.1 FOR EXACT LOCATION).
- 8 6" INCREASE LINE FROM BUILDING AT 2% MINIMUM SLOPE. INV. EL. = 970.20' (C-4.3)
- 9 6" PVC SANITARY LINE FROM BUILDING AT 2% MINIMUM SLOPE. INV. EL. = 970.20' (C-3.7)
- 10 TWO (2) - 3,000 GALLON GREASE INTERCEPTORS (6,000 TOTAL). (C-5.8)
- 10A TOP OF COVER = 973.50. INV. IN = 969.30. INV. OUT = 969.10.
- 10B TOP OF COVER = 973.50. INV. IN = 969.00. INV. OUT = 968.80.

GREASE TRAP CALCULATIONS per 2012 COBB COUNTY DEVELOPMENT STANDARDS (Section 418.06.04)

minimum interceptor size = 750 gallons
 maximum interceptor size = 3,000 gallons
 total capacity size = (S) X (12) X (HR/12) X (LF) + TO X 2.5 = CAPACITY IN GALLONS
 WHERE:
 S = NUMBER OF SEATS = 114 (Indoor) + 16 (Outdoor) = 130 SEATS
 HR = NUMBER OF HOURS RESTAURANT IS OPEN = 16
 LF = LOADING FACTOR = 1.00 (MAIN HIGHWAY)
 TO = TAKE-OUT ORDER/DAY
 (130) X (12) X (16/12) X (1.00) + 320 X 2.5 = 6,000 GALLONS
 THEREFORE TWO @ 3,000 GALLONS

- 12 SANITARY SEWER PIPE TO BE SDR 35. SIZE, LENGTH AND SLOPE AS SPECIFIED. (C-5.1)
- 13 CORE DRILL EXISTING SANITARY SEWER MANHOLE AND CONNECT PROPOSED 8" PVC AT INVERT 959.0'.
NOTE: CONTRACTOR SHALL FIELD VERIFY EXACT LOCATION AND INVERT OF EXISTING SANITARY MANHOLE PRIOR TO THE START OF CONSTRUCTION. REPORT TO ENGINEER IF ANY CONFLICT EXISTS.
- 14 CONTRACTOR SHALL COORDINATE UNDERGROUND ELECTRIC SERVICE CONNECTION WITH GEORGIA POWER FOR CONDUIT SIZE AND BURIED DEPTH REQUIREMENT.
- 15 PAD MOUNTED TRANSFORMER
- 16 GAS METER BY GAS COMPANY.
- 17 CONTRACTOR SHALL COORDINATE UNDERGROUND GAS SERVICE CONNECTION WITH ATLANTA GAS & LIGHT.
- 18 CONTRACTOR SHALL COORDINATE UNDERGROUND TELEPHONE SERVICE CONNECTION WITH AT&T FOR CONDUIT SIZE AND BURIED DEPTH REQUIREMENT OF CONDUIT WITH PULL STRING INSTALLED FROM POINT OF SERVICE TO RIGHT-OF-WAY LINE.
- 19 PROPOSED STORM DRAINAGE LINE (REFER TO GRADING AND DRAINAGE PLAN, SHEET No. C-3.0).
- 20 RE-ROUTE EXISTING BURIED POWER CABLE AROUND DUMPSTER ENCLOSURE.
- 21 ADJUST EXISTING BURIED POWER CABLE TO NEW TRANSFORMER LOCATION.

UTILITY TESTING AND DISINFECTING NOTES

HYDROSTATIC PRESSURE AND LEAKAGE TESTS SHALL BE CONDUCTED ON ALL NEWLY INSTALLED WATER DISTRIBUTION SYSTEM PRESSURE PIPES AND APPURTENANCES. THE TESTS SHALL BE IN ACCORDANCE WITH THE PROVISIONS OF ANWA C600 OR M23 AS APPLICABLE.

DISINFECTION OF THE WATER DISTRIBUTION SYSTEM SHALL BE PERFORMED IN ACCORDANCE WITH ANWA C651 DISINFECTING WATER MAINS.

THE CONTRACTOR SHALL MAKE PROVISIONS TO PROTECT THE ACTIVE EXISTING MAIN FROM BACKFLOW CONTAMINATION DURING FILLING, FLUSHING, AND TESTING OF THE NEW MAIN, AS SPECIFIED IN ANSI/ANWA C651-99.

NOTE: FLUSHING TIME SHALL BE AT LEAST THAT AMOUNT OF TIME NEEDED TO FLUSH TWO TIMES THE PIPE VOLUME AFTER 3 FPS VELOCITY IS REACHED OR UNIL CLEAR, WHICHEVER IS LONGER.



Chick-fil-A
5200 Buffington Road
Atlanta, Georgia 30349-2998

INTERPLANS
ARCHITECTURE
ENGINEERING
INTERIOR DESIGN
PROJECT MANAGEMENT

604 COURTLAND STREET
SUITE 100
ORLANDO, FLORIDA 32804
PH 407.645.5008
FX 407.629.9124

SEAL: THIS DOCUMENT IS NOT FOR CONSTRUCTION UNLESS THE ARCHITECT'S SIGNATURE AND SEAL APPEAR BELOW

STUART ANDERSON, P.E.
GA. REG. # PE038342

CHICK-FIL-A
SAR South Cobb FSR
3100 SOUTH COBB DRIVE SE.
SMYRNA, GEORGIA 30080

FSR# 0810

REVISION SCHEDULE

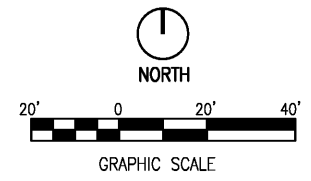
NO.	DATE	DESCRIPTION
1	01/22/18	COUNTY COMMENTS

CONSULTANT PROJECT # 2017.0165
 PRINTED FOR Permit
 DATE 10/20/17
 DRAWN BY MJ
 CHECKED BY GEG

Information contained on this drawing and in all digital files produced for above named project may not be reproduced in any manner without express written or verbal consent from authorized project representatives.

SHEET
SITE UTILITY PLAN
SHEET NUMBER
PS-10

Order Plans @ www.ldline.com



1" = 20'