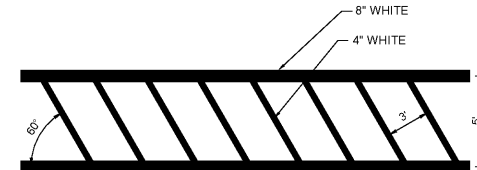


MULTI-LANE SPLIT MULTI-LANE MERGE

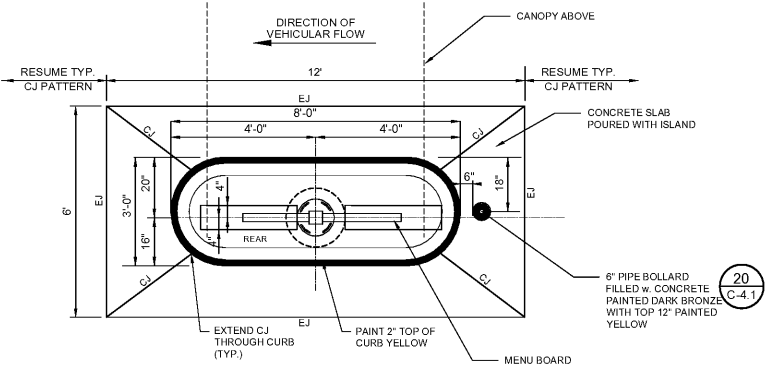
**32** MULTI-LANE DIRECTIONAL GRAPHICS  
C-4.3 NOT TO SCALE

- NOTES:
- GENERAL CONTRACTOR SHALL REFER TO CHICK-FIL-A PARKING LOT STRIPING SPECIFICATIONS. SEE DETAIL SPECIFICATIONS. CONTRACTOR SHALL USE WHITE REFLECTIVE PAINT ON ASPHALT & YELLOW REFLECTIVE PAINT ON CONCRETE.

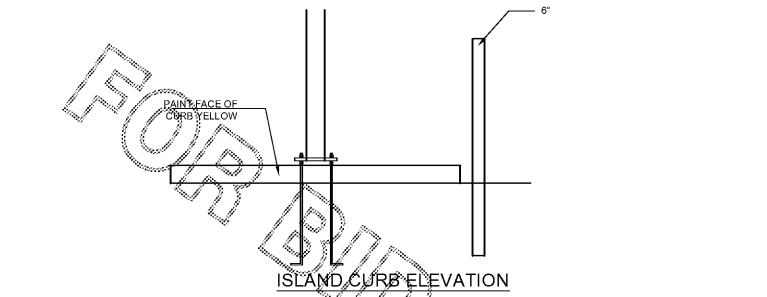


**33** CROSSWALK DETAIL  
C-4.3 NOT TO SCALE

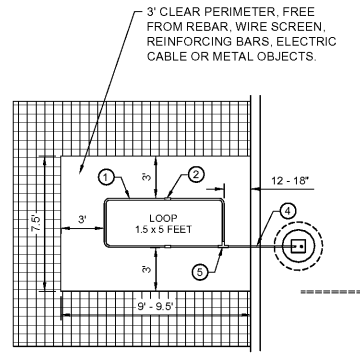
- NOTES:
- REFER TO PARKING LOT STRIPING SPECIFICATION
  - CROSSWALK ALONG AN ACCESSIBLE ROUTE SHALL MAINTAIN A CROSS SLOPE OF 1.5% MAX AND A RUNNING SLOPE OF 5% MAX.



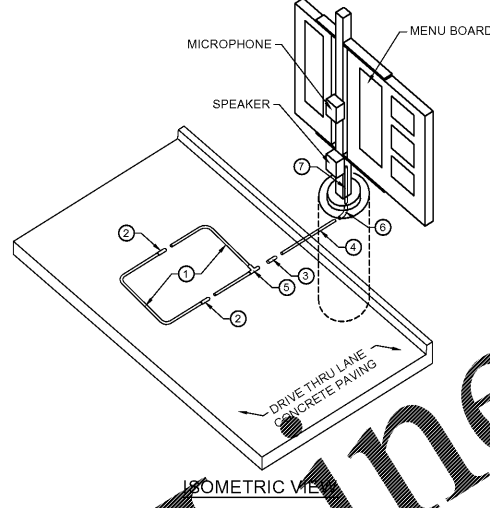
**20** ISLAND CURB PLAN  
C-4.1



**34** DRIVE THRU ORDER POINT ISLAND CURB  
C-4.3 NOT TO SCALE



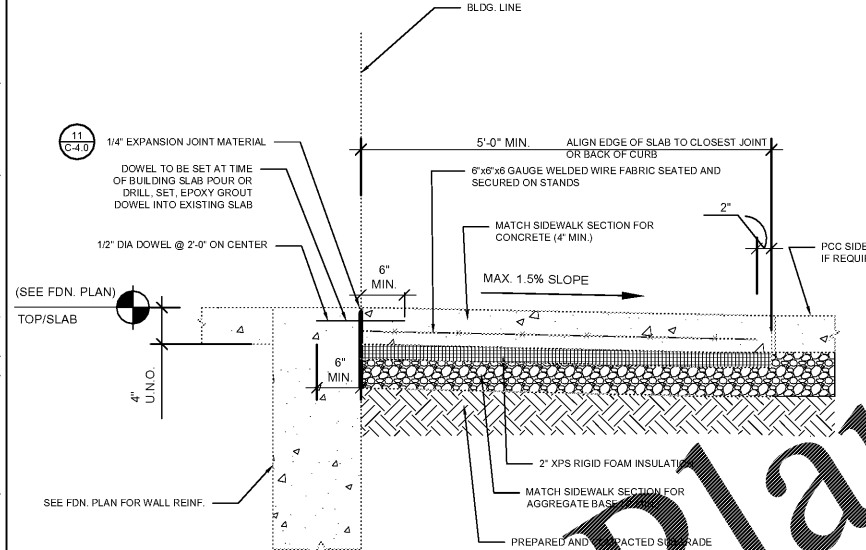
**35** MENU BOARD LOOP DETECTION SYSTEM  
C-4.3 NOT TO SCALE



- PARTS LIST**
- PREFAB (FOLDED) LOOP (1.5' x 5')
  - 1/2" PVC COUPLING
  - 1/2" PVC SLEEVE COUPLING
  - 1/2" PVC TUBING (3' LENGTH)
  - 1/2" PVC CORNER FITTING
  - 1/2" PVC 90° ELBOW
  - 1/2" PVC TUBING (2' LENGTH)

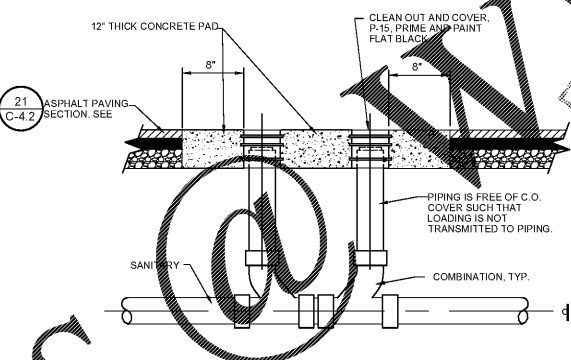
**35** MENU BOARD LOOP DETECTION SYSTEM  
C-4.3 NOT TO SCALE

- NOTES:
- LOOP DETECTOR IS MODEL NO. VDL100 VEHICLE DETECTION LOOP MANUFACTURED BY MH ELECTRONICS, INC.
  - FOLLOW MANUFACTURER'S RECOMMENDATIONS FOR INSTALLATION.



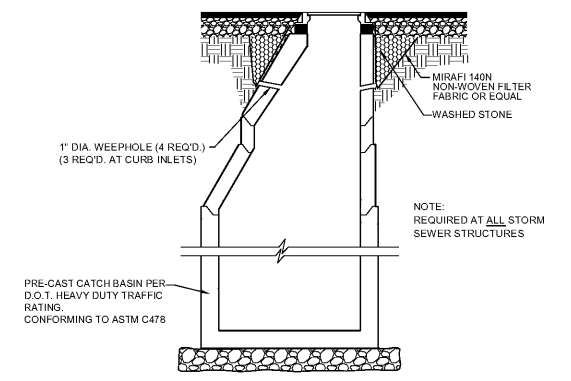
**36** ENTRY DOOR FROST SLAB DETAIL  
C-4.3 NOT TO SCALE

- NOTE:
- CONTRACTOR HAS THE OPTION TO DRILL, SET AND EPOXY GROUT DOWEL, IF NOT INSTALLED AT THE BUILDING.
  - REFER TO ARCHITECTURAL DRAWINGS FOR DOOR LOCATIONS. DOOR SHALL EXTEND 12" PAST EACH SIDE OF DOOR MIN. STOOP IS TO BE SEPARATED ON ALL SIDES WITH 1/4" EXPANSION JOINT MATERIAL, TOPPED WITH SEALANT.
  - USE A 10'X5' SLAB MINIMUM AT A DOUBLE DOOR ENTRY.
  - USE A 5'X5' SLAB MINIMUM AT A SINGLE DOOR ENTRY.
  - DOWELS TO BE INSTALLED INTO THE BUILDING FOUNDATION ONLY. THE REMAINING THREE SIDES OF THE SLAB DO NOT GET TIED TO THE SURROUNDING SIDEWALK.

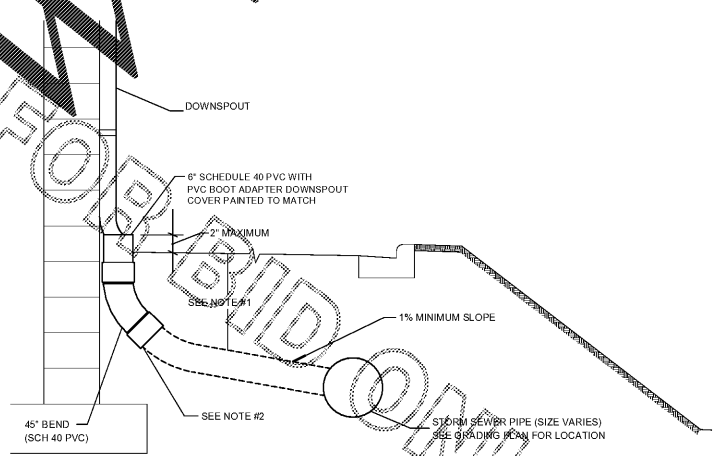


**37** SAN. C.O. OUTSIDE BUILDING  
C-4.3 NOT TO SCALE

- NOTES:
- SEE PLUMBING PLANS FOR GREASE TRAP DETAIL
  - CLEAN OUT COVERS SHALL BE PROVIDED ON ALL CLEANOUTS REGARDLESS OF LOCATION
  - CONCRETE COLLAR ALSO REQUIRED FOR SINGLE CLEANOUTS IN PAVEMENT

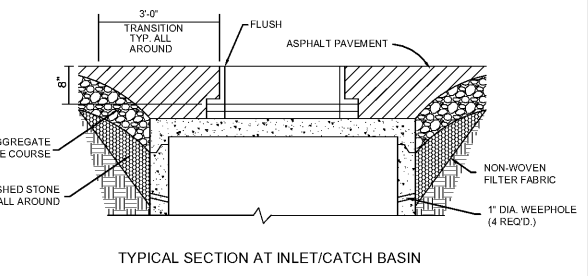
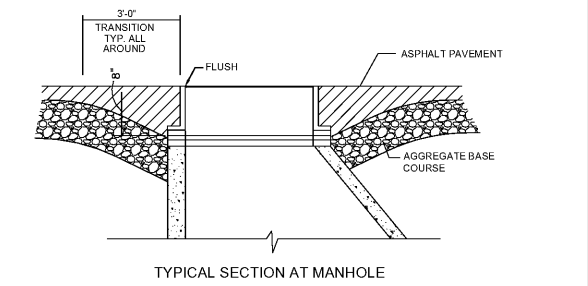


**40** STORM WEEP HOLE DETAIL  
C-4.3 NOT TO SCALE



**38** BUILDING DOWNSPOUT CONNECTION DETAIL  
C-4.3 NOT TO SCALE

- NOTES:
- FOR ALL DEPTHS OF COVER LESS THAN TWO (2) FEET, PIPE MUST BE SCHEDULE 40 PVC. FOR DEPTHS OF COVER GREATER THAN TWO (2) FEET, FLEXIBLE PIPE MAY BE USED. REFER TO SPECIFICATIONS FOR ALLOWABLE PIPE TYPES.
  - A WATERTIGHT CONNECTION SHALL BE MAINTAINED WITH ANY TRANSITION FROM SCHEDULE 40 PVC PIPE TO ANY OTHER PIPE TYPE.
  - THE DOWNSPOUT COLLECTOR DRAIN SHALL BE INSTALLED BEFORE THE DOWNSPOUTS ARE INSTALLED ON THE BUILDING. SITEWORK CONTRACTOR SHALL BE RESPONSIBLE FOR ALL WORK INCLUDING THE RODENT SCREEN. BUILDING CONTRACTOR SHALL BE RESPONSIBLE FOR THE CONNECTION AT THE POINT OF THE RODENT SCREEN.
  - IF NECESSARY, ADJUST FOOTING TO ALLOW DOWNSPOUT TO BE INSTALLED TIGHT AGAINST BUILDING



**39** TYPICAL SECTION AT INLET/CATCH BASIN DETAIL  
C-4.3 NOT TO SCALE

**CHICK-FIL-A**  
SAR South Cobb FSR  
3100 SOUTH COBB DRIVE SE.  
SMYRNA, GEORGIA 30080  
FSR# 0810

**REVISION SCHEDULE**

NO.	DATE	DESCRIPTION

CONSULTANT PROJECT # 2017.0165

PRINTED FOR	Permit
DATE	10/2017
DRAWN BY	M/J
CHECKED BY	GEG

Information contained on this drawing and in all digital files produced for above named project may not be reproduced in any manner without express written or verbal consent from authorized project representatives.

SHEET CHICK-FIL-A STANDARD DETAILS

SHEET NUMBER  
**C-4.3**

STUART ANDERSON, P.E.  
GA. REG. # PE038342

Chick-fil-A  
5200 Buffington Road  
Atlanta, Georgia 30349-2998

**INTERPLANS**  
ARCHITECTURE  
ENGINEERING  
INTERIOR DESIGN  
PROJECT MANAGEMENT

604 COURTLAND STREET  
SUITE 100  
ORLANDO, FLORIDA 32804  
PH 407.645.5008  
FX 407.629.9124

SEAL:  
THIS DOCUMENT IS NOT FOR CONSTRUCTION  
UNLESS THE ARCHITECT'S SIGNATURE AND SEAL APPEAR BELOW

2017-10-20 10:50:20 C:\Users\jgibson\OneDrive\Documents\2017-10-20\CHICK-FIL-A\CHICK-FIL-A STANDARD DETAILS\CHICK-FIL-A STANDARD DETAILS.dwg User: jgibson Date: 10/20/17 10:50:20 AM