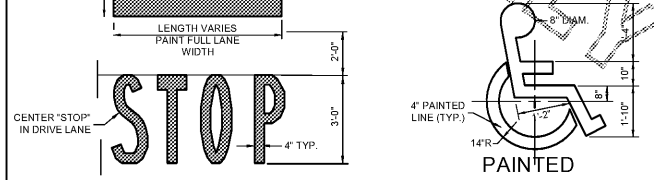


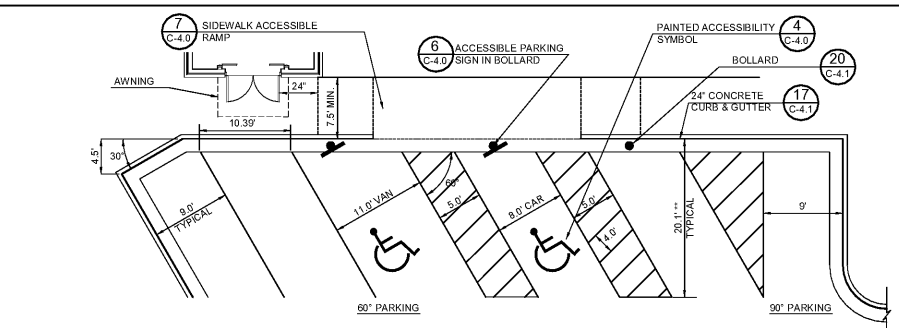
1 DIRECTIONAL ARROW
C-4.0 NOT TO SCALE

NOTES:
1. GENERAL CONTRACTOR SHALL REFER TO CHICK-FIL-A PARKING LOT STRIPING SPECIFICATIONS. SEE DETAIL.
2. CONTRACTOR SHALL USE WHITE REFLECTIVE PAINT ON ASPHALT & YELLOW REFLECTIVE PAINT ON CONCRETE.



3 STOP LINE GRAPHIC
C-4.0 NOT TO SCALE

NOTES:
1. GENERAL CONTRACTOR SHALL REFER TO CHICK-FIL-A PARKING LOT STRIPING SPECIFICATIONS. SEE DETAIL.
2. CONTRACTOR SHALL USE WHITE REFLECTIVE PAINT ON ASPHALT & YELLOW REFLECTIVE PAINT ON CONCRETE.
3. IF STOP SIGN IS PROPOSED, STOP LINE GRAPHIC IS NOT REQUIRED.

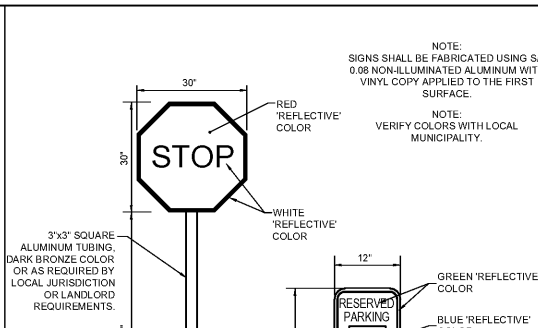


5 STANDARD PARKING STALL
C-4.0 NOT TO SCALE

NOTES:
1. ACCESSIBLE PARKING AND ACCESSIBLE AISLES SHALL NOT EXCEED 1.5% IN SLOPE IN ANY DIRECTION. IF ONLY ONE ACCESS AISLE IS INSTALLED, IT IS TO BE A VAN SIZE.
2. PARKING STALL DIMENSIONING SHALL BE IN ACCORDANCE WITH APPLICABLE GOVERNING AUTHORITIES' AND ADA STANDARDS AND IF DIFFERENT THAN THIS DETAIL SHALL BE THE DIMENSIONING SHOWN ON THE SITE LAYOUT PLAN.
3. GENERAL CONTRACTOR SHALL REFER TO CHICK-FIL-A PARKING LOT STRIPING SPECIFICATIONS.
4. CONTRACTOR SHALL USE 4" WIDE WHITE REFLECTIVE PAINT FOR STRIPING ON ASPHALT PARKING LOTS.
5. CONTRACTOR SHALL USE 4" WIDE YELLOW REFLECTIVE PAINT FOR STRIPING ON CONCRETE PARKING LOTS.
6. NO WHEEL STOPS TO BE INSTALLED WHEN PARKING IS ADJACENT TO SIDEWALK.
7. ADA SIGNS IN BOLLARDS AND BOLLARDS SHALL BE INSTALLED WHEN PARKING IS ADJACENT TO CURB OR RAMP.

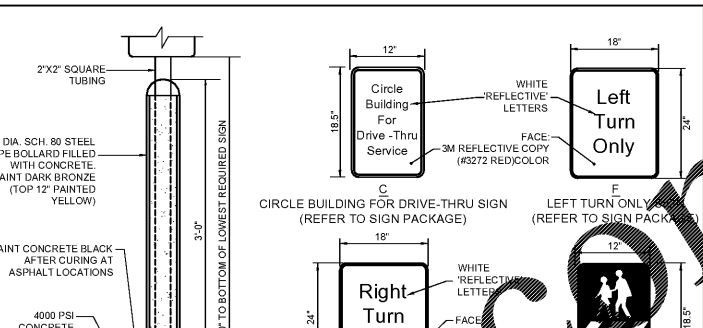
PARKING LOT STRIPING SPECIFICATIONS:

STANDARDS:
1. ALWAYS FOLLOW ALL APPLICABLE GOVERNING AUTHORITY'S STANDARDS.
2. SURFACES SHOULD BE CLEAN, DRY, AND FREE FROM LOOSE OR PEELING PAINT. REMOVE ALL OIL, DUST, GREASE, DIRT, AND OTHER FOREIGN MATERIAL TO ENSURE ADEQUATE ADHESION. DO NOT APPLY WHEN AIR OR SURFACE TEMPERATURES ARE BELOW 40°F.
3. APPLY SHERWIN-WILLIAMS SETFAST PREMIUM ALKYD ZONE MARKING PAINT A300 WHITE OR A303 YELLOW USING EITHER AIRLESS OR CONVENTIONAL LINE STRIPING EQUIPMENT. USE THE FOLLOWING SETTINGS AS A GUIDE-ACTUAL SETTINGS DEPEND ON ATMOSPHERIC CONDITIONS AT THE TIME OF APPLICATION:
APPLICATION:
AIRLESS 1800-2700 PSI
PRESSURE 1/2" ID
HOSE 0.015"-0.017"
TIP 60 MESH
ONLY IF NECESSARY, UP TO 1PT/GAL VMAP NAPHTA RTK3
REDUCTION ONLY IF NECESSARY, UP TO 1PT/GAL VMAP NAPHTA RTK3
CONVENTIONAL
BLINKS 21 (BLEEDER) OR EQUIVALENT #68
FLUID NOZZLE INTERNAL MIX #709
AIR NOZZLE 45-50 PSI
ATOMIZATION PRESSURE 40-70 PSI
FLUID PRESSURE ONLY IF NECESSARY, UP TO 1PT/GAL VMAP NAPHTA RTK3
REDUCTION ONLY IF NECESSARY, UP TO 1PT/GAL VMAP NAPHTA RTK3
SHERWIN WILLIAMS H8C SHARK GRIP SLIP RESISTANT ADDITIVE TO BE MEASURED AND ADDED TO ALL PAINT PER MANUFACTURER'S WRITTEN SPECIFICATIONS. MIX THOROUGHLY PER MANUFACTURER'S RECOMMENDATIONS SO THAT NO CLUMPING IS APPARENT AND UNTIL EVEN DISTRIBUTION IS ACHIEVED. MAINTAIN EVEN DISTRIBUTION OF ADDITIVE IN PAINT THROUGHOUT THE APPLICATION PROCESS.
MIX PAINT THOROUGHLY BY BOXING, STIRRING, OR POWER AGITATION BEFORE USE. APPLY AT 15 MILS
SWIET TO ACHIEVE A SPREAD RATE OF 400-500 LINEAL FEET OF STANDARD 4" STRIPE PER GALLON APPLIED AT THIS RATE AT 70 DEGREES F AND 50% RELATIVE HUMIDITY, PAINT WILL DRY WITH NO TRAFFIC PICKUP AFTER 20 MINUTES.
GENERAL CONTRACTOR TO RE-STRIP THE LOT 45 DAYS AFTER OPENING.



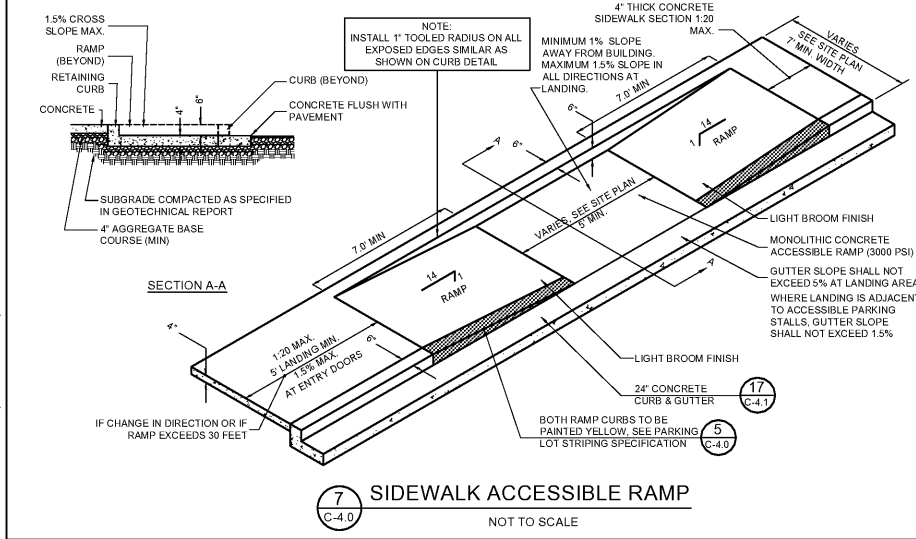
A STOP SIGN & STANDARD MOUNTING POST
C-4.0 (MUTCD R 1-1)

NOTES:
1. SIGNS SHALL BE FABRICATED USING SF 0.08 NON-ILLUMINATED ALUMINUM WITH VINYL COPY APPLIED TO THE FIRST SURFACE.
2. VERIFY COLORS WITH LOCAL MUNICIPALITY.

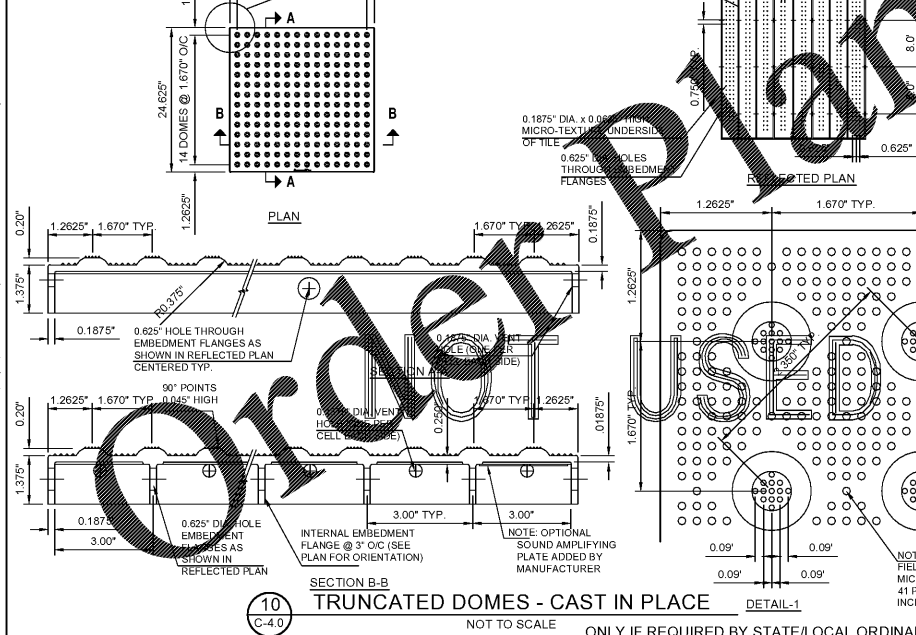


6 DIRECTIONAL SIGNAGE
C-4.0 NOT TO SCALE

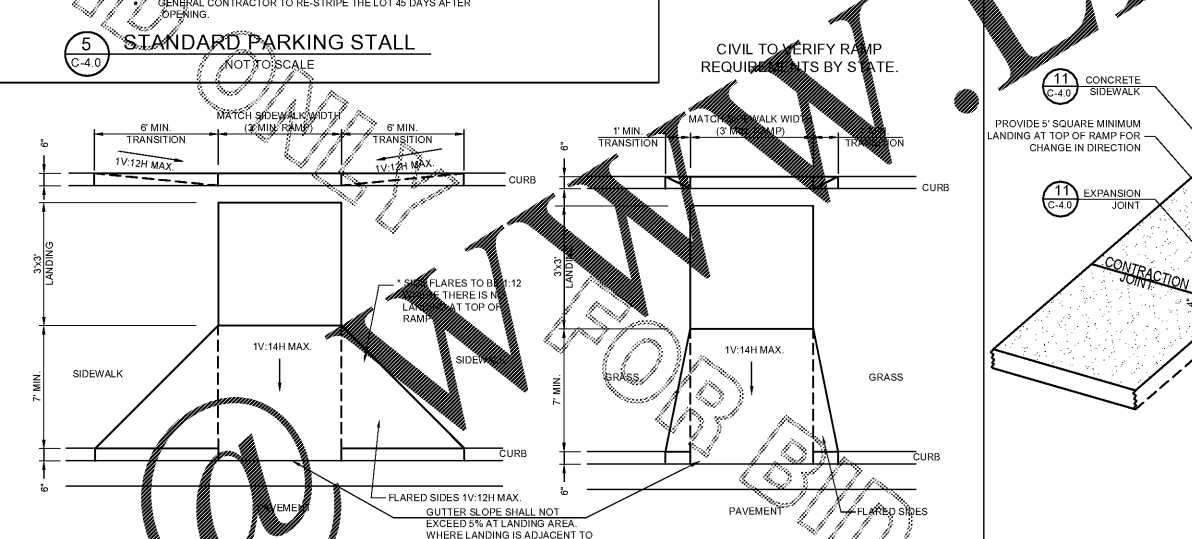
NOTE: SIGNS PROVIDED AND INSTALLED BY CFA SIGNAGE CONTRACTOR*



7 SIDEWALK ACCESSIBLE RAMP
C-4.0 NOT TO SCALE

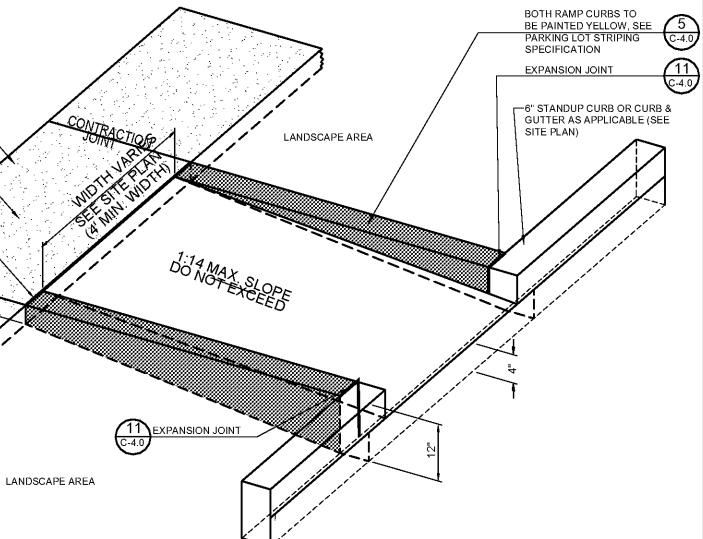


10 TRUNCATED DOMES - CAST IN PLACE
C-4.0 NOT TO SCALE

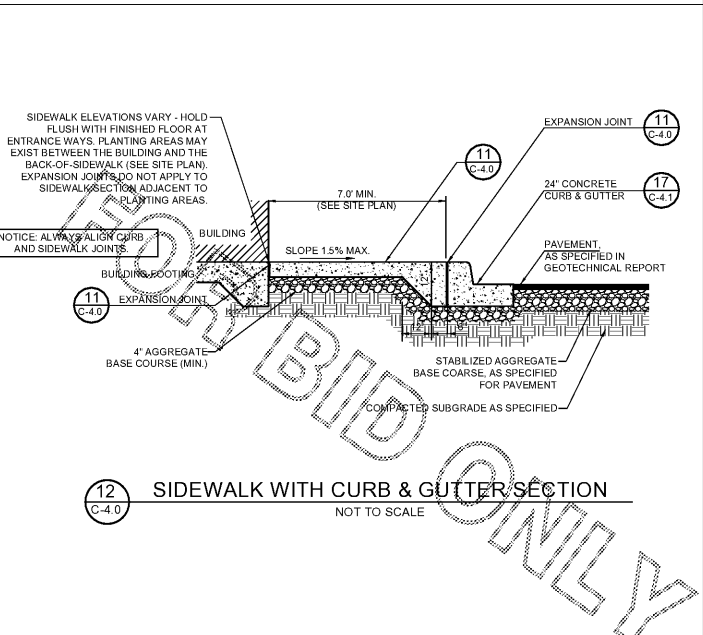


8 CURB RAMP w/ FLARED SIDES
C-4.0 NOT TO SCALE

NOTES:
1. CURB RAMP RUNNING SLOPES SHALL NOT BE STEEPER THAN 1:14 AND CROSS SLOPE SHALL BE 1.5% OR FLATTER.
2. DETECTABLE WARNING (IF REQUIRED) SHALL BE INSTALLED AT A DEPTH OF 24" FROM THE BACK OF CURB LINE FOR THE LENGTH OF THE RAMP LANDING.
3. DETECTABLE WARNING SURFACES SHALL BE CONSTRUCTED BY TEXTURING PRODUCTS CONFORMING TO PROWAG R304. TRANSITION SLOPES ARE NOT TO HAVE DETECTABLE WARNINGS. CONTRACTOR SHALL CONFIRM LOCAL CODES ARE MET.
4. WHERE A CURB RAMP IS CONSTRUCTED WITHIN AN EXISTING CURB, CURB & GUTTER AND/OR SIDEWALK, THE EXISTING CURB & GUTTER SHALL BE REMOVED TO THE NEAREST JOINT BEYOND THE CURB TRANSITIONS OR TO THE EXTENT THAT NO REMAINING SECTION OF CURB OR CURB & GUTTER IS LESS THAN 5' LONG. THE EXISTING SIDEWALK SHALL BE REMOVED TO THE NEAREST JOINT BEYOND THE TRANSITION SLOPE WALK OR TO THE EXTENT THAT NO REMAINING SECTION OF SIDEWALK IS LESS THAN 5'.
5. THE PLAN MUST PROVIDE FOR DETECTABLE WARNING SURFACE COLORS OR MATERIALS THAT PROVIDE THE NECESSARY CONTRAST, EITHER DARK-ON-LIGHT, OR LIGHT-ON-DARK. STANDARD DOME COLOR IS BRICK RED.
6. TRUNCATED DOMES TO BE INSTALLED USING ARMOR TILE CAST IN PLACE DOME TACTILE TILE. PART NUMBER ADA-2424 OR OTHER EQUIVALENT APPROVED MATERIAL. PREFERRED MANUFACTURER ARMOR TILE TACTILE SYSTEMS LANCE MITCHELL(919)622-4616 UNLESS PAVERS ARE REQUIRED, CONTRACTOR TO VERIFY THAT CURB RAMPS MEET LOCAL CODES AND ADA REQUIREMENTS.



9 RETURNED CURB ACCESSIBLE RAMP
C-4.0 NOT TO SCALE



11 TYPICAL CONCRETE SIDEWALK
C-4.0 NOT TO SCALE



Chick-fil-A
5200 Buffington Road
Atlanta, Georgia 30349-2998

INTERPLANS
ARCHITECTURE
ENGINEERING
INTERIOR DESIGN
PROJECT MANAGEMENT

604 COURTLAND STREET
SUITE 100
ORLANDO, FLORIDA 32804
PH 407.645.5008
FX 407.629.9124

SEAL:
THIS DOCUMENT IS NOT FOR CONSTRUCTION
UNLESS THE ARCHITECT'S SIGNATURE AND SEAL APPEAR BELOW

STUART ANDERSON, P.E.
GA. REG. # PE038342

CHICK-FIL-A
SAR South Cobb FSR
3100 SOUTH COBB DRIVE SE.
SMYRNA, GEORGIA 30080

FSR# 0810

REVISION SCHEDULE

NO.	DATE	DESCRIPTION

CONSULTANT PROJECT # 2017.0165
PRINTED FOR Permit
DATE 10/2017
DRAWN BY M/J
CHECKED BY GEG

Information contained on this drawing and in all digital files produced for above named project may not be reproduced in any manner without express written or verbal consent from authorized project representatives.
SHEET CHICK-FIL-A STANDARD DETAILS
SHEET NUMBER

C-4.0

Order Plans

WWW.BID2PLAN.COM

WWW.BID2PLAN.COM