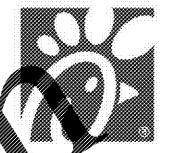


- LEGEND**
- 6 PARKING SPACE TOTALS
 - 2/04 DETAIL NUMBER SHEET NUMBER
 - TRAFFIC DIRECTIONAL ARROW
 - N 00°00'00" E BUILDING BEARING

SITE PLAN DESIGN NOTES & KEY PLAN

- 1 DIRECTIONAL ARROW
 - 2 DRIVE-THRU GRAPHICS
 - 3 STOP LINE GRAPHIC
 - 4 PAINTED HANDICAP PARKING SYMBOL
 - 5 STANDARD PARKING STALL
 - 6 DIRECTIONAL SIGNAGE
- NOTES: 1. ALL SIGNS SHALL CONFORM TO THE "MANUAL ON UNIFORM TRAFFIC CONTROL DEVICES" BY THE ILL. DEPARTMENT OF TRANSPORTATION.
2. SIGNS SHALL BE PROVIDED AND INSTALLED BY CHICK-FIL-A GENERAL CONTRACTOR.
- 6A STOP SIGN
 - 6B HANDICAPPED PARKING SIGN (REQUIRED)
 - 6C "CIRCLE" SIGN FOR DRIVE-THRU
 - 6D "RIGHT-TURN ONLY" SIGN (NOT USED)
 - 6E "ONE WAY" WITH ARROW SIGN (NOT USED)
 - 6F LEFT TURN SIGN (NOT USED)
 - 6G WARNING - WATCH FOR PEDESTRIAN SIGN
 - 6H "DO NOT ENTER" SIGN
- 7 SIDEWALK HANDICAPPED RAMP
 - 8 HANDICAPPED RAMP WITH FLARED SIDES (NOT USED)
 - 8A HANDICAPPED RAMP w/ SHORT FLARED SIDES (NOT USED)
 - 9 RETURNED CURBED HANDICAPPED RAMP
 - 10 TRUNCATED DOMES - CAST IN PLACE (NOT USED)
 - 11 TYPICAL CONCRETE SIDEWALK
 - 12 SIDEWALK WITH CURB AND GUTTER
 - 13 DRIVE-THRU PLAN
 - 14 DRIVE-THRU ISOMETRIC
 - 15 SOLID YELLOW PLASTIC WHEEL STOP (NOT USED)
 - 16 LANDSCAPE AND IRRIGATION PROTECTOR (NOT USED)
 - 17 24" CONCRETE CURB AND GUTTER
 - 17A SPILLING CURB AND GUTTER
 - 17B CATCHING CURB AND GUTTER
 - 17C DEPRESSED SPILLING CURB AND GUTTER
 - 17D DEPRESSED CATCHING CURB AND GUTTER
 - 18 ROLLER / MOUNTABLE CURB (1 FT. WIDE) (NOT USED)
 - 19 REFUSE ENCLOSURE FOUNDATION PLAN
 - 19A REFUSE ENCLOSURE FOUNDATION PLAN (ALT.) (NOT USED)
 - 20 REFUSE ENCLOSURE ALTERNATE DRAINAGE PLAN (NOT USED)
 - 21 CONCRETE BOLLARD
 - 22 TYPICAL PAVEMENT SECTION
 - 22A PAVEMENT EDGE
 - 23 TRANSVERSE AND LONGITUDINAL CONTRACTION JOINT
 - 24 TRANSVERSE & LONGITUDINAL DOWELED CONST. JOINT
 - 24A BUTT JOINT
 - 25 CONCRETE APRON AT DUMPSTER ENCLOSURE
 - 26 CONCRETE PAVING AT DRIVE-THRU LANE
 - 27 ALUMINUM HANDRAIL
 - 28 TYPICAL ADA RAMP AND HANDRAIL (NOT USED)
 - 29 MULTI-LANE DIRECTIONAL GRAPHICS
 - 30 CROSSWALK
 - 31 DRIVE-THRU ORDER POINT ISLAND CURB
 - 32 MENU BOARD LOOP DETECTION SYSTEM
 - 33 MENU BOARD & CANOPY ORDERING STATION
 - 34 GREASE INTERCEPTOR (REFER TO SHEET PS-1.0)
 - 35 TYPICAL LIGHT POLE BASE
 - 36 FLAGPOLE - EXX SERIES 50 FOOT FLAG POLE PACKAGE, BY APPROVED VENDORS; THE FLAG COMPANY OR ATLAS FLAGS.
 - 37 PAD MOUNTED TRANSFORMER
 - 38 REFUSE/STORAGE BUILDING (REFER TO ARCHITECTURAL PLANS)
 - 39 EXISTING CHICK-FIL-A PRIME (PYLON) SIGN TO BE REFACED
- 40 2" FIBER CHAMFER ON CONCRETE PAVEMENT
 - 41 4" WIDE WHITE STRIPING (SEE PAINT ADDITIVE NOTE, DETAIL 5, SHEET C-4.0)
 - 42 PAINTED DIAGONAL / CHEVRON STRIPING
 - 43 CASH MACHINE (ON 4" THICK 3' x 5.5' CONCRETE PAD)
 - 44 DRAINAGE STRUCTURE (REFER TO GRADING PLAN SHEET No. C-3.0)
 - 45 TIER 3, FACE TO FACE MENU BOARD CANOPY (REFER TO ARCH. PLANS)
 - 46 ORDER MEAL DELIVERY CANOPY (REFER TO ARCHITECTURAL PLANS)



Chick-fil-A
5200 Buffington Road
Atlanta, Georgia 30349-2998

INTERPLANS
ARCHITECTURE
ENGINEERING
INTERIOR DESIGN
PROJECT MANAGEMENT

604 COURTLAND STREET
SUITE 100
ORLANDO, FLORIDA 32804
PH 407.645.5008
FX 407.629.9124

SEAL:
THIS DOCUMENT IS NOT FOR CONSTRUCTION
UNLESS THE ARCHITECT'S SIGNATURE AND SEAL APPEAR BELOW

STUART ANDERSON, P.E.
GA. REG. # PE038342

CHICK-FIL-A
SAR South Cobb FSR
3100 SOUTH COBB DRIVE SE.
SMYRNA, GEORGIA 30080

FSR# 0810

REVISION SCHEDULE

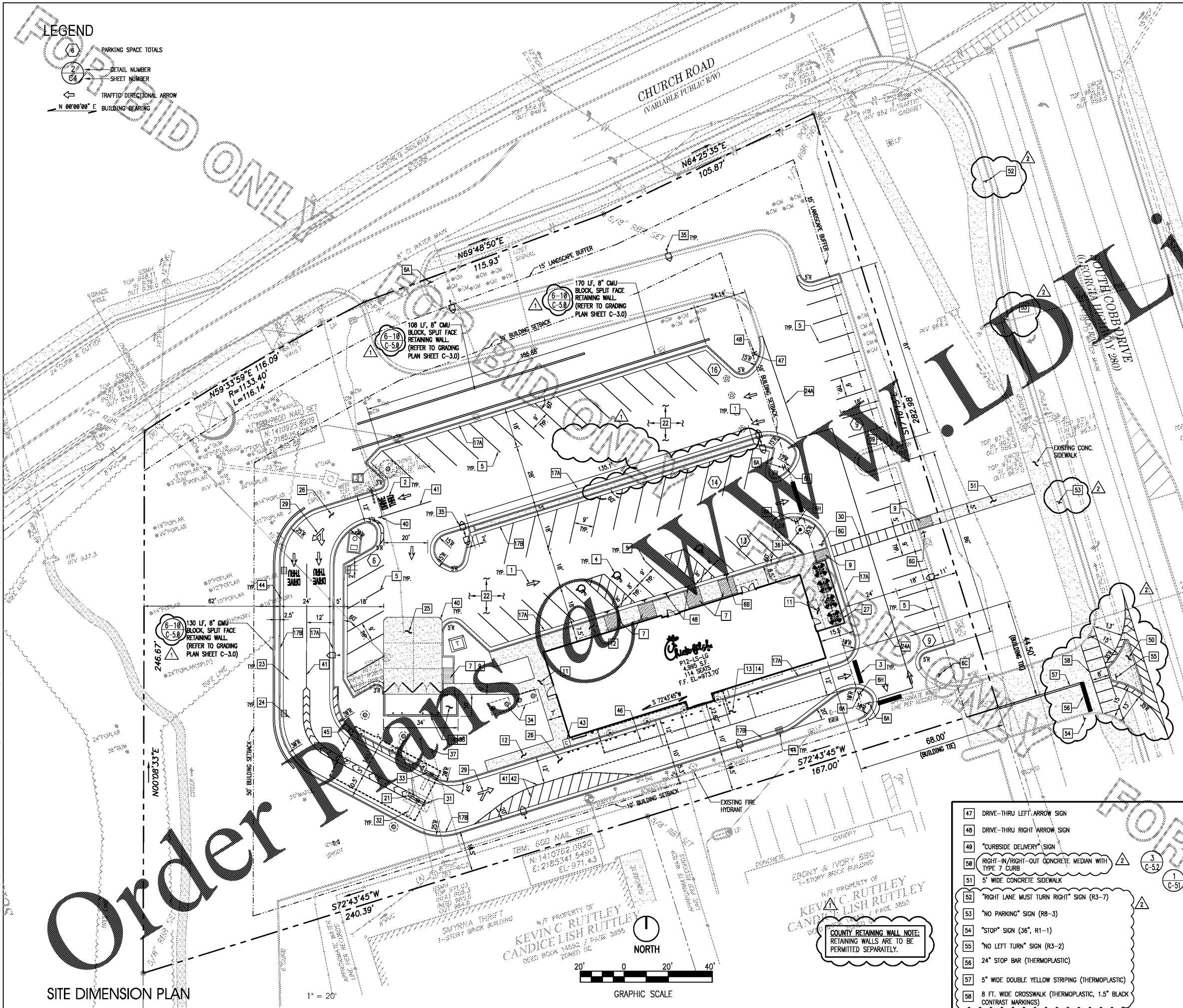
NO.	DATE	DESCRIPTION
1	01/22/18	COUNTY COMMENTS
2	02/05/18	GDOT COMMENTS

CONSULTANT PROJECT # 2017.0165
PRINTED FOR Permit
DATE 10/20/17
DRAWN BY M/J
CHECKED BY GEG

Information contained on this drawing and in all digital files produced for above named project may not be reproduced in any manner without express written or verbal consent from authorized project representatives.

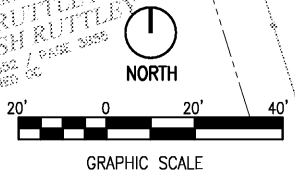
SHEET SITE DIMENSION PLAN

SHEET NUMBER
C-2.0



- 47 DRIVE-THRU LEFT ARROW SIGN
- 48 DRIVE-THRU RIGHT ARROW SIGN
- 49 "CURBSIDE DELIVERY" SIGN
- 50 RIGHT-IN/RIGHT-OUT CONCRETE MEDIAN WITH TYPE 7 CURB
- 51 5' WIDE CONCRETE SIDEWALK
- 52 "RIGHT LANE MUST TURN RIGHT" SIGN (R3-7)
- 53 "NO PARKING" SIGN (R8-3)
- 54 "STOP" SIGN (S6, R1-1)
- 55 "NO LEFT TURN" SIGN (R3-2)
- 56 24" STOP BAR (THERMOPLASTIC)
- 57 5" WIDE DOUBLE YELLOW STRIPING (THERMOPLASTIC)
- 58 8 FT. WIDE CROSSWALK (THERMOPLASTIC, 1.5" BLACK CONTRAST MARKINGS)

COUNTY RETAINING WALL NOTE:
RETAINING WALLS ARE TO BE PERMITTED SEPARATELY.



SITE DIMENSION PLAN

1" = 20'

FOR BIDDING ONLY

FOR BIDDING ONLY

Order Plans

FOR BIDDING ONLY

COPYRIGHT 2017 INTERPLANS, LLC. ALL RIGHTS RESERVED. REPRODUCTION OF THIS DOCUMENT OR ANY PART THEREOF WITHOUT THE WRITTEN PERMISSION OF INTERPLANS, LLC IS PROHIBITED.