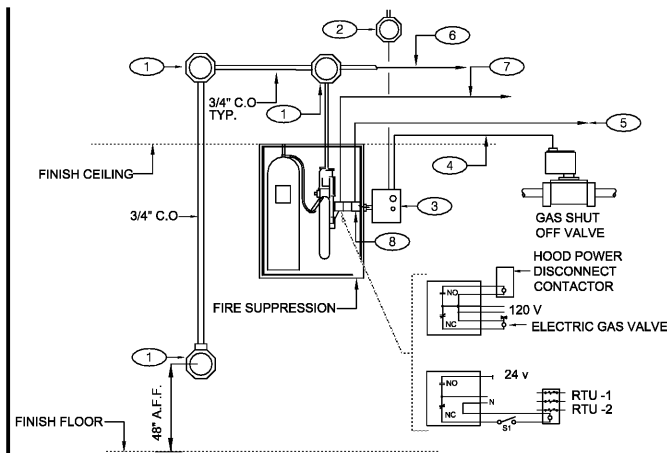


NOTE: GREEN GROUND WIRE REQUIRED IN ALL CONDUITS, SIZED PER N.E.C. REQUIREMENTS.

UNDER SLAB CONDUIT N.T.S. **17**



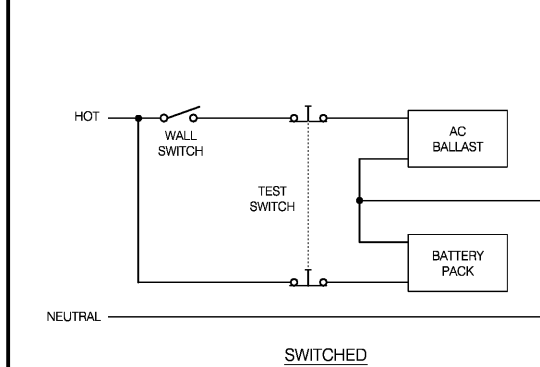
GENERAL NOTES:

1. REFER TO SHEET M3.0

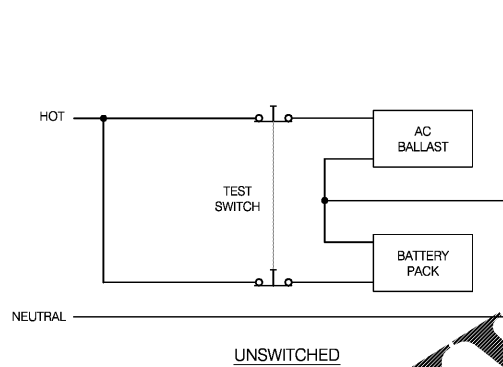
KEY NOTES:

- 1 PROVIDE 4\"/>
- 2 PROVIDE J-BOX, AND 110 V CIRCUIT. REFER TO EQUIPMENT SCHEDULE/FLOOR PLAN FOR CIRCUIT ASSIGNMENT. INTERCONNECT TO MANUAL RESET RELAY THROUGH MICROSWITCH.
- 3 MANUAL RESET RELAY FURNISHED WITH UNIT INSTALLED BY E.C.
- 4 PROVIDE 1/2\"/>
- 5 PROVIDE 1/2\"/>
- 6 CABLE AND CONNECTION TO FUSIBLE LINKS AT EXHAUST HOOD BY K.E.C.
- 7 PROVIDE INTERCONNECTION TO "SHUNT TRIP" BREAKER AT PANEL AND MICROSWITCH AT HOOD.
- 8 SLOT FOR SNAP ACTION MICRO-SWITCH. UP TO FOUR SWITCHES AVAILABLE FOR HOOK-UP.
SWITCH 1: GAS SHUT-OFF VALVE.
SWITCH 2: EXH/S.
SWITCH 3: SHUNT TRIP BREAKER IN ELE PANEL.

FIRE SUPPRESSION SYSTEM WIRING DIAGRAM N.T.S. **9**

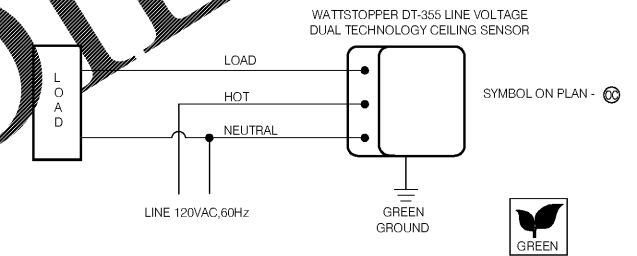


SWITCHED



UNSWITCHED

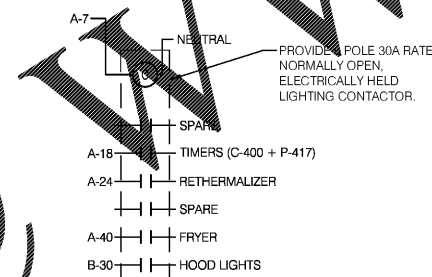
TYPICAL EMERGENCY BATTERY PACK DETAIL N.T.S. **10**



CEILING OCCUPANCY SENSOR WIRING DIAGRAM N.T.S. **2**

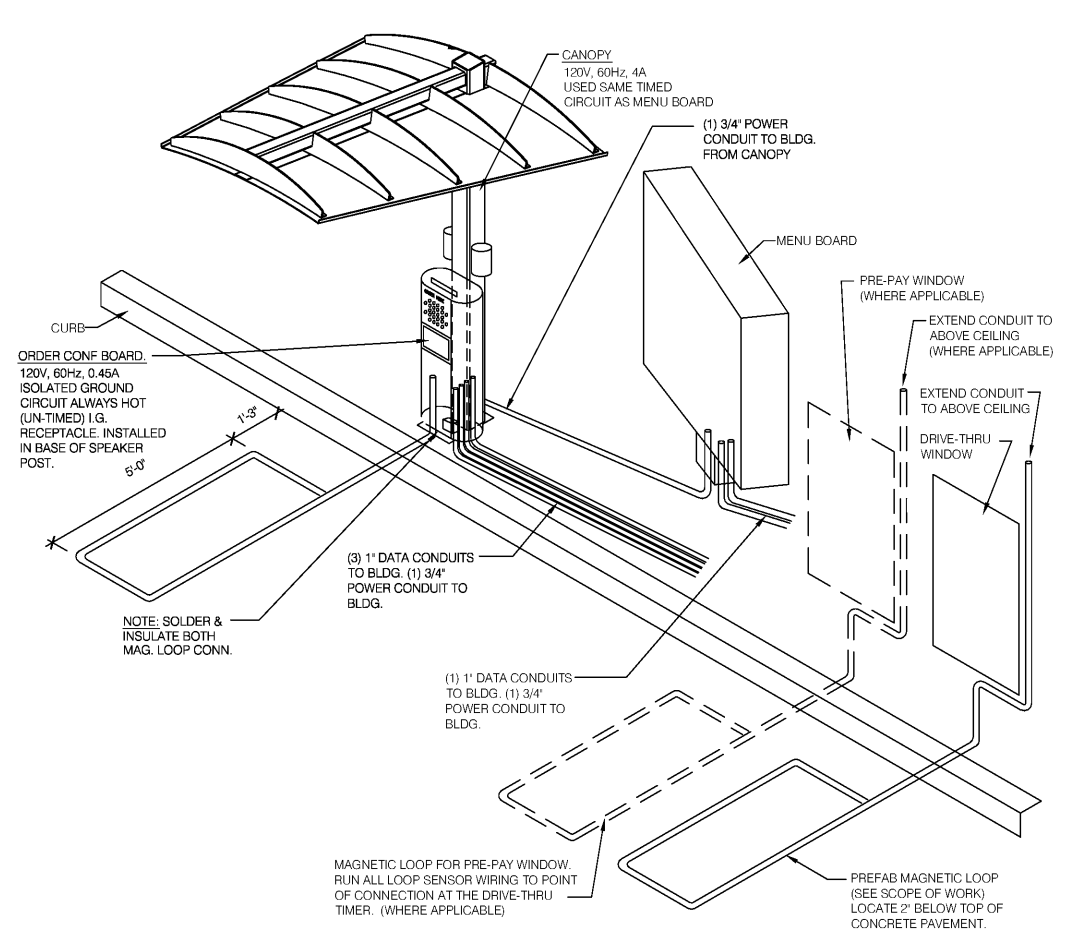


NOT USED N.T.S. **15**



SEQUENCE OF OPERATION:
UPON ACTIVATION OF ANY HOOD FIRE SUPPRESSION SYSTEM RELAY, A RELAY IN THAT FIRE SUPPRESSION SYSTEM SHALL CAUSE THIS RELAY TO DEENERGIZE, THUS REMOVING POWER FROM ALL DEVICES CONNECTED TO EQUIPMENT LOCATED UNDER THE GREASE HOOD. EXHAUST FANS SHALL NOT BE AFFECTED BY THIS ACTION AND SHALL CONTINUE TO BE CONTROLLED AS INDICATED IN THE SEQUENCE OF OPERATIONS INDICATED IN DETAIL 2/E6.0.

HOOD RELAY CONTROL POWER N.T.S. **11**



DRIVE-THRU COMMUNICATIONS ISOMETRIC N.T.S. **4**

Order Plans @

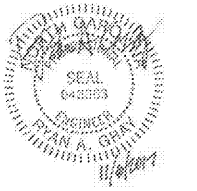
NOT USED N.T.S. **20**

NOT USED N.T.S. **16**

NOT USED N.T.S. **12**



DEVITA
ATLANTA • CHARLOTTE • GREENVILLE • RICHMOND
DeVita & Associates, Inc. Project # 17002-22
Drawn By: SMD Checked By: RAG
NC Firm License # C-0819



12144.400

- △
- △
- △
- △
- △
- △
- △
- △
- △
- △

CONTRACT DATE: 10.23.17
BUILDING TYPE: EXP. LITE MED 40
PLAN VERSION: DECEMBER 2016
SITE NUMBER: 311687
STORE NUMBER: 436563

TACO BELL
3923 SHAKEDOWN ST.
CHARLOTTE, NC



ELECTRICAL DETAILS
E7.0