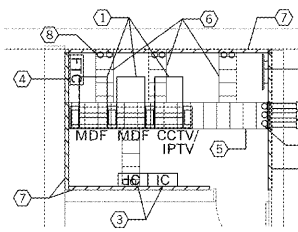


TELECOMMUNICATIONS ENLARGED EQUIPMENT LAYOUT PLAN NOTES:



- FLOOR MOUNTED 4-POST 19" TELECOMMUNICATIONS EQUIPMENT RACK WITH VERTICAL CABLE MANAGEMENT. REFER TO RACK ELEVATIONS & SPECIFICATIONS. COORDINATE EXACT LOCATIONS AND EQUIPMENT PLACEMENT WITH OWNER PRIOR TO INSTALLATION.
- TELECOMMUNICATIONS MAIN GROUNDING BUSBAR (TMGB) MOUNTED 7'-0" AFF. REFER TO DETAIL & SECTION 26 05 26. PROVIDE BONDING CONDUCTOR TO ALL RACKS AND EQUIPMENT IN THIS SPACE.
- INTERROOM SYSTEM PUNCH BLOCKS WITH SURGE SUPPRESSION. COORDINATE INSTALLATION AND LABELING WITH GORDON COUNTY.
- WALL MOUNTED FIBER OPTIC CABINET FOR TERMINATION OF SERVICE ENTRANCE FIBER. COORDINATE RELOCATION WITH GORDON COUNTY & ENA/COMCAST.
- 18" LADDER RACK INSTALLED AT 90° ABOVE FINISHED FLOOR. PROVIDE LADDER RACK TO EQUIPMENT RACK BRACING AT EACH RACK. PROVIDE CABLE DROP OUTS RACK ACCESSORY AT EACH VERTICAL WIRE MANAGEMENT.
- 12" LADDER RACK INSTALLED AT 90° ABOVE FINISHED FLOOR. PROVIDE LADDER RACK TO WALL MOUNT BRACKET.
- FIRE RATED 3/4" x 8'-0" GRADE A/C PLYWOOD INSTALLED ON ALL WALLS IN THIS SPACE. PAINT FRONT SIDE AND ALL EDGES WITH LIGHT COLORED FIRE RETARDANT PAINT. PROVIDE OUTLET BOX EXTENSION RING AS REQUIRED FOR DEVICES INSTALLED IN WALLS TO RECEIVE PLYWOOD TO BRING THE FACE FLUSH WITH WOOD SURFACE.
- FURNISH AND INSTALL (2) 4" CONDUIT SLEEVES THROUGH CEILING GRID ABOVE EACH LADDER RACK-TO-WALL LOCATION. SLEEVES SHOULD BE BONDED TO RACK AND HAVE PROTECTIVE BUSHINGS INSTALLED. SLEEVES FOR PASSAGE OF CABLES FROM CEILING CAVITY TO LADDER RACK.
- PROVIDE (3) 4" CORED HOLES THROUGH MASONRY WALL WITH 4" SLEEVES INSTALLED TO CEILING CAVITY OF MEDIA RACK. INSTALL BOND BUSHINGS ON EACH SLEEVE AND BOND TO LADDER RACK ON EACH SIDE OF WALL. FIRE-STOP ALL PENETRATIONS PER SECTION 07 84 13.

ENLARGED FLOOR PLAN - MDF DATA RM 218 E5
SCALE: 1/4" = 1'-0" E104

RENOVATION - COMM & PROT PLAN NOTES:

- COORDINATE ACCESS CONTROL ROUGH-IN REQUIREMENTS W/ DIV 9 & 27 SHOP DRAWINGS. REFER TO ACCESS CONTROL ROUGH-IN DETAIL ON E401.
- SURFACE MOUNT OUTLET BOX W/ SINGLE PORT DATA NETWORK OUTLET 6" ABOVE TOP OF TV. COORDINATE HEIGHT WITH OWNER FURNISHED AND INSTALLED TV UNIT PRIOR TO ROUGH-IN.
- PROVIDE FIRE ALARM CONNECTION TO OCCUPANCY POWER PACK THROUGH DRY CONTACTS TO BYPASS OCCUPANCY SENSOR DURING AN ALARM EVENT.
- PROVIDE CABLING/RACEWAY AS REQUIRED TO CONNECT CAMERA STATION TO MASTER CONTROL STATION.
- PROVIDE 3/4" GRS CONDUIT ON UNDERSIDE OF CANOPY TO WEATHERPROOF JUNCTION BOXES AT CAMERA LOCATION. LIQUID TIGHT FLEX FROM BOX TO CAMERA CONNECTION BOX. COORDINATE INSTALLATION REQUIREMENTS WITH GORDON COUNTY PRIOR TO ROUGH-IN.
- CORE DRILL WALL PENETRATIONS. PROVIDE A MINIMUM OF 3/4" RACEWAY FROM EACH EXTERIOR CAMERA TO AN ACCESSIBLE CEILING SPACE INSIDE BUILDING.
- NEW LOCATION FOR SURVEILLANCE SYSTEM MONITOR. COORDINATE LOCATION WITH GORDON COUNTY SCHOOLS PRIOR TO INSTALLATION OF POWER/DATA OUTLET BOXES.
- COORDINATE LOCATION OF DEVICES INSTALLED IN MILLWORK KNEE SPACE AND/OR BACKSPLASH WITH VENDOR SHOP DRAWINGS PRIOR TO ROUGH-IN. CENTER DATA/POWER OUTLETS IN KNEE SPACE AREA, WHERE POSSIBLE.
- REFER TO ENLARGED PLAN ON THIS SHEET FOR ADDITIONAL REQUIREMENTS IN THIS SPACE.

BUILDING 2012 - ELECTRICAL COMM. & PROT. PLAN N13
SCALE: 1/8" = 1'-0" E104

Southern A&E ARCHITECTS & ENGINEERS
7951 Troon Circle
Austell, Ga. 30168
(770) 819-7777

REVISED AD1: MAR 08, 2018
DATE February 28, 2018
JOB NUMBER 01-647-061

FACILITY CODE NUMBER: 66-1050
RENOVATIONS TO
BELWOOD ELEMENTARY SCHOOL
GORDON COUNTY BOARD OF EDUCATION
CALHOUN, GEORGIA

STATE OF GEORGIA REGISTERED ARCHITECT
STATE OF GEORGIA REGISTERED ARCHITECT

DRAWING NUMBER
E104
R1.A11

Order Plans

WWW.LDILine.com

