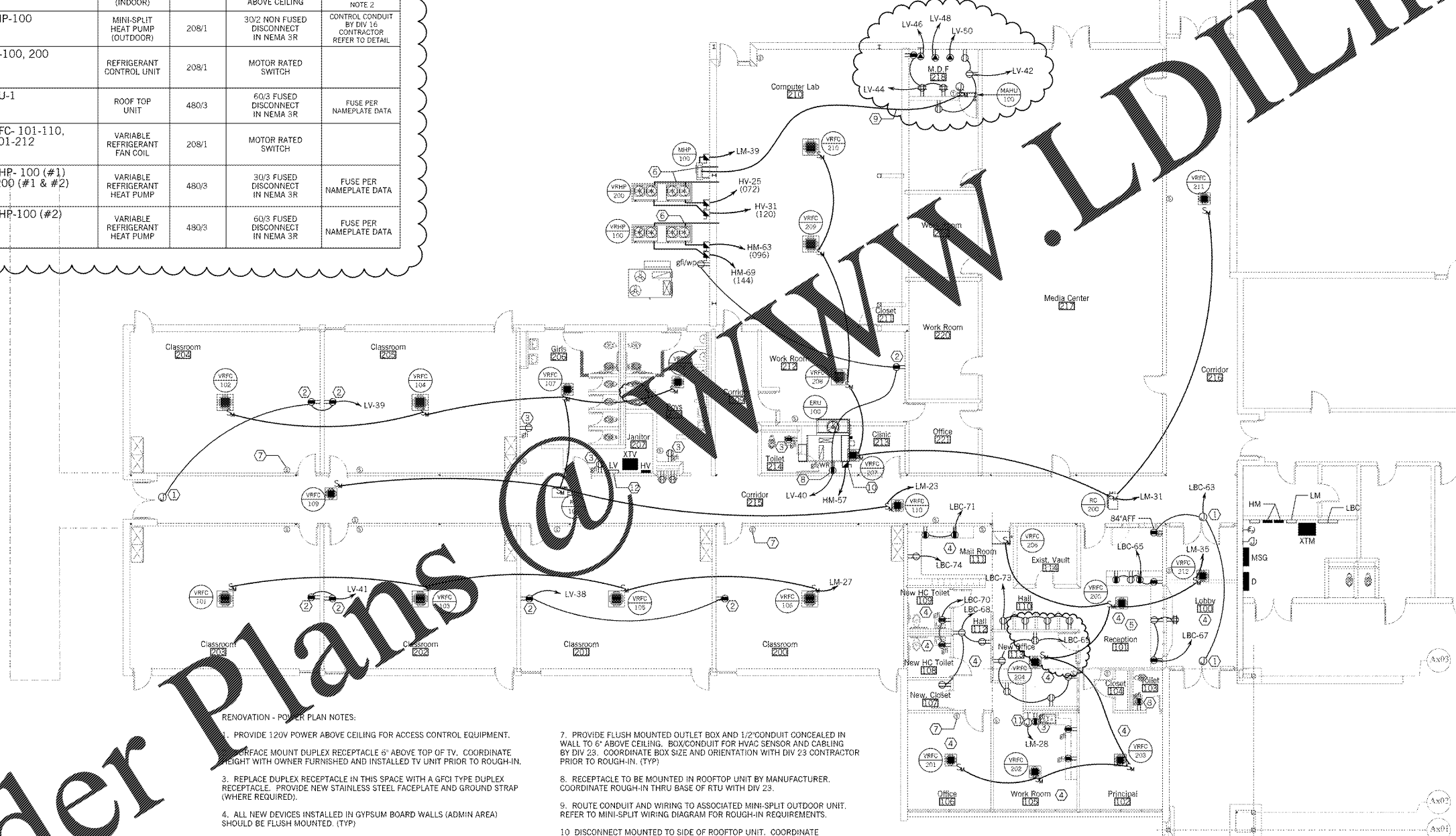


- MECHANICAL EQ. CONN. SCHED NOTES:
1. PROVIDE CONDUIT FOR CONTROL WIRING AS SHOWN ON DETAIL SHEET.
 2. COORDINATE HEIGHT OF JUNCTION BOX WITH MECHANICAL CONTRACTOR. PROVIDE POWER CONNECTION TO CONDENSATE PUMP (WHERE INSTALLED). REFER TO DETAIL SHEET.
 3. FOR ALL HVAC EQUIPMENT, PROVIDE MINIMUM OF 1/2" FROM ACCESSIBLE CEILING AND/OR CONTROL PANEL TO UNIT CONNECTION POINT FOR CONTROL WIRING BY OTHERS.
 4. REFER TO MECHANICAL DRAWINGS FOR EXHAUST FAN INTERLOCK WITH LIGHTS. PROVIDE RELAY AS REQUIRED. COORDINATE WITH MECHANICAL CONTRACTOR.

MECHANICAL EQUIPMENT CONNECTION SCHEDULE				
UNIT	DESCRIPTION	VOLTAGE	TYPE DISCONNECT	COMMENTS
EF-101,102,103	EXHAUST FAN	120/1	MOTOR RATED SWITCH	NOTE 4
EH-100,101,102,103	ELECTRIC HEATER	277/1	PROVIDED WITH UNIT	
ERU-100	ENERGY RECOVERY UNIT	480/3	30/3 FUSED DISCONNECT IN NEMA 3R	FUSE PER NAMEPLATE DATA
MAHU-100	MINI-SPLIT AIR-HANDLER (INDOOR)	208/1	3 POLE MOTOR RATED SWITCH LOCATED ABOVE CEILING	CONTROL CONDUIT BY DIV 16 CONTRACTOR NOTE 2
MHP-100	MINI-SPLIT HEAT PUMP (OUTDOOR)	208/1	30/2 NON FUSED DISCONNECT IN NEMA 3R	CONTROL CONDUIT BY DIV 16 CONTRACTOR REFER TO DETAIL
RC-100, 200	REFRIGERANT CONTROL UNIT	208/1	MOTOR RATED SWITCH	
RTU-1	ROOF TOP UNIT	480/3	60/3 FUSED DISCONNECT IN NEMA 3R	FUSE PER NAMEPLATE DATA
VRFC- 101-110, 201-212	VARIABLE REFRIGERANT FAN COIL	208/1	MOTOR RATED SWITCH	
VRHP- 100 (#1) 200 (#1 & #2)	VARIABLE REFRIGERANT HEAT PUMP	480/3	30/3 FUSED DISCONNECT IN NEMA 3R	FUSE PER NAMEPLATE DATA
VRHP-100 (#2)	VARIABLE REFRIGERANT HEAT PUMP	480/3	60/3 FUSED DISCONNECT IN NEMA 3R	FUSE PER NAMEPLATE DATA



RENOVATION - POWER PLAN NOTES:

1. PROVIDE 120V POWER ABOVE CEILING FOR ACCESS CONTROL EQUIPMENT.
2. SURFACE MOUNT DUPLEX RECEPTACLE 6" ABOVE TOP OF TV. COORDINATE HEIGHT WITH OWNER FURNISHED AND INSTALLED TV UNIT PRIOR TO ROUGH-IN.
3. REPLACE DUPLEX RECEPTACLE IN THIS SPACE WITH A GFI TYPE DUPLEX RECEPTACLE. PROVIDE NEW STAINLESS STEEL FACEPLATE AND GROUND STRAP (WHERE REQUIRED).
4. ALL NEW DEVICES INSTALLED IN GYPSUM BOARD WALLS (ADMIN AREA) SHOULD BE FLUSH MOUNTED. (TYP)
5. COORDINATE LOCATION OF ALL OUTLETS WITH MILLWORK SHOP DRAWINGS PRIOR TO ROUGH-IN.
6. PROVIDE A MINIMUM OF 1/2" CONDUIT FROM EACH OUTDOOR HVAC UNIT TO ACCESSIBLE CEILING CAVITY INSIDE BUILDING. CONDUIT INSTALLED ON EXTERIOR OF BUILDING SHALL BE GALVANIZED RIGID STEEL AND SHALL BE PAINTED TO MATCH FACADE. CORE DRILL ALL WALL PENETRATIONS AND SEAL ENTRY POINT WATER TIGHT. (TYP)
7. PROVIDE FLUSH MOUNTED OUTLET BOX AND 1/2" CONDUIT CONCEALED IN WALL TO 6" ABOVE CEILING. BOX/CONDUIT FOR HVAC SENSOR AND CABLING BY DIV 23. COORDINATE BOX SIZE AND ORIENTATION WITH DIV 23 CONTRACTOR PRIOR TO ROUGH-IN. (TYP)
8. RECEPTACLE TO BE MOUNTED IN ROOFTOP UNIT BY MANUFACTURER. COORDINATE ROUGH-IN THRU BASE OF RTU WITH DIV 23.
9. ROUTE CONDUIT AND WIRING TO ASSOCIATED MINI-SPLIT OUTDOOR UNIT. REFER TO MINI-SPLIT WIRING DIAGRAM FOR ROUGH-IN REQUIREMENTS.
10. DISCONNECT MOUNTED TO SIDE OF ROOFTOP UNIT. COORDINATE DISCONNECT LOCATION AND THRU BASE ROUGH-IN REQUIREMENTS WITH DIV 23.
11. PROVIDE CONNECTION TO DISHWASHER BENEATH COUNTER. COORDINATE EXACT LOCATION AND CONNECTION REQUIREMENTS PRIOR TO ROUGH-IN.
12. THIS PANELBOARD SHALL BE REPLACED. REFER TO PANELBOARD SCHEDULE ON DRAWING E501 FOR MORE DETAIL. PROVIDE NEW FEEDER FROM TRANSFORMER XTY PER PANEL SCHEDULE.

BUILDING 2012 - ELECTRICAL POWER PLAN N12 E103
SCALE: 1/8" = 1'-0"

Southern A&E ARCHITECTS & ENGINEERS
7951 Tron Circle
Austell, Ga. 30168
(770) 819-7777

REVISED AD1: MAR 08, 2018
DATE: February 28, 2018
JOB NUMBER: 01-647-061

FACILITY CODE NUMBER: 66-1050
RENOVATIONS TO
BELWOOD ELEMENTARY SCHOOL
GORDON COUNTY BOARD OF EDUCATION
CALHOUN, GEORGIA

STATE OF GEORGIA REGISTERED ARCHITECT
STATE OF GEORGIA REGISTERED PROFESSIONAL ENGINEER
E103 R1.ADI

Order Plans

WWW.LDILine.com