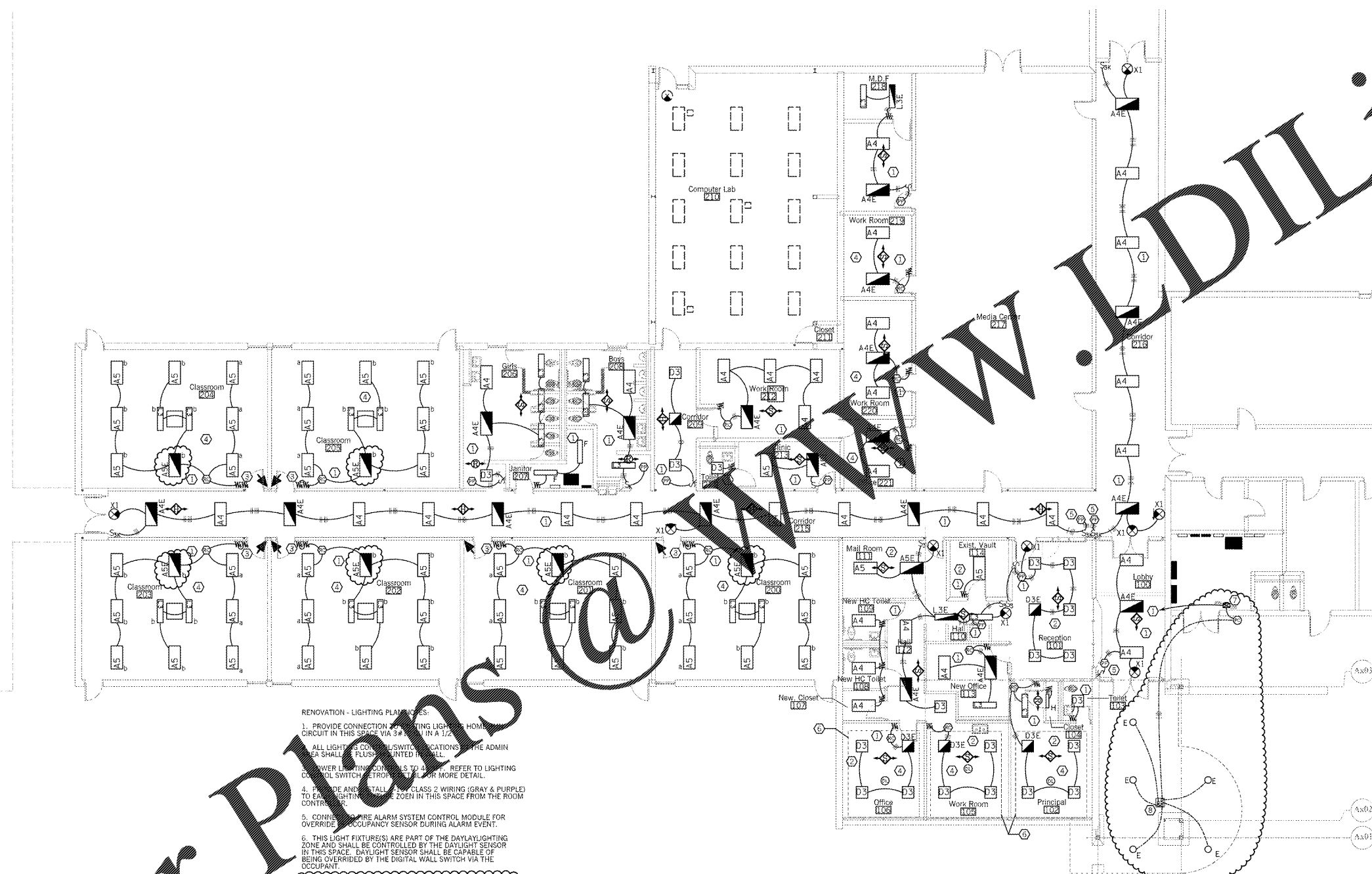
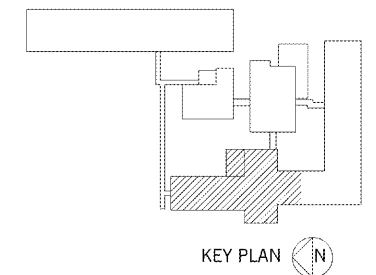


LIGHTING FIXTURE SCHEDULE					
MARK	LAMPS	VOLT	MANUFACTURER & CAT. NO.	MOUNTING	REMARKS
A4	LED LUMEN: 4000 CCT: 3500K	120V 277	COLUMBIA MERCURY LITHONIA LCAT-24-35-ML-G-ED-U LR2-242-4200-35K-UNI ZBL74-40L-ADP-LP835	RECESSED 24" LIGHT FIXTURE	0-10V DIMMING
A4E	LED LUMEN: 4000 CCT: 3500K	120V 277	SAME AS TYPE A4 LIGHTING FIXTURE BUT PROVIDED W/ EMERGENCY BATTERY PACK PER SECTION 265110.	RECESSED 24" LIGHT FIXTURE	0-10V DIMMING
A5	LED LUMEN: 4800 CCT: 3500K	120V 277	COLUMBIA MERCURY LITHONIA LCAT-24-35-ML-G-ED-U LR2-242-4200-35K-UNI ZBL74-40L-ADP-LP835	RECESSED 22" LIGHT FIXTURE	0-10V DIMMING
A5E	LED LUMEN: 4800 CCT: 3500K	120V 277	SAME AS TYPE A5 LIGHTING FIXTURE BUT PROVIDED W/ EMERGENCY BATTERY PACK PER SECTION 265110.	RECESSED 22" LIGHT FIXTURE	0-10V DIMMING
D3E	LED LUMEN: 3300 CCT: 3500K	120V 277	SAME AS TYPE D3 LIGHTING FIXTURE BUT PROVIDED W/ EMERGENCY BATTERY PACK PER SECTION 265110.	RECESSED 22" LIGHT FIXTURE	0-10V DIMMING
E	LED LUMEN: 3000 CCT: 4000K	120V 277	MAXILUME HHS-LED-3000L-3000W-WD HHS-9501-01-SC4 OR APPROVED EQUAL	RECESSED 6" DOWNLIGHT	WET LOCATION REMOTE MOUNT DRIVER
F	LED LUMEN: 3000 CCT: 4000K	120V 277	LITHONIA METALUX COLUMBIA ZL174-LAB-3000LM-AST-40K SNEED-142-3000-1W-L240 L24-ML-E-U	SURFACE/ CHAIN - 14" AFF	PROVIDE LENS
H	LED LUMEN: 2400 CCT: 3500K	120V 277	COLUMBIA METALUX OR APPROVED EQUAL	WALL MOUNT 1/4" ABOVE DOOR	2" WRAP AROUND LENS
L3	LED LUMEN: 3000 CCT: 3500K	120V 277	COLUMBIA MERCURY LITHONIA LCAT-14-35-VW-G-ED-U LR2-142-3300-35K-UNI ZBL74-30L-ADP-LP835	RECESSED 14" LIGHT FIXTURE	0-10V DIMMING
L3E	LED LUMEN: 3000 CCT: 3500K	120V 277	SAME AS TYPE L3 LIGHTING FIXTURE BUT PROVIDED W/ EMERGENCY BATTERY PACK PER SECTION 265110.	RECESSED 14" LIGHT FIXTURE	0-10V DIMMING
X1	LED	120V 277	LITHONIA MULE LIGHTING DUALITE CHILD-PROOF CLIP-LITES NAVILITE	UNIVERSAL MOUNTING HARDWARE SEE PLANS SEE DETAIL	PROVIDE NCAD BATTERY PACK MOUNTING; WHITE LETTER: RED



- RENOVATION - LIGHTING PLAN NOTES:
1. PROVIDE CONNECTION BETWEEN LIGHTING CIRCUIT AND HOME CIRCUIT IN THIS SPACE VIA 3/8" IN A 1/2" DIA. RIGID CONDUIT. ALL LIGHTING CONTROL SWITCH LOCATIONS TO THE ADMIN AREA SHALL BE PLUMB.
 2. POWER LIGHTING CONTROLS TO 30" REFER TO LIGHTING CONTROL SWITCH CONTROL FOR MORE DETAIL.
 3. PROVIDE AND INSTALL CLASS 2 WIRING (GRAY & PURPLE) TO EACH LIGHTING ZONE IN THIS SPACE FROM THE ROOM CONTROL CENTER.
 4. CONNECT FIRE ALARM SYSTEM CONTROL MODULE FOR OVERRIDE TO OCCUPANCY SENSOR DURING ALARM EVENT.
 5. THIS LIGHT FIXTURE(S) ARE PART OF THE DAYLIGHTING ZONE AND SHALL BE CONTROLLED BY THE DAYLIGHT SENSOR IN THIS SPACE. DAYLIGHT SENSOR SHALL BE CAPABLE OF BEING OVERRIDDEN BY THE DIGITAL WALL SWITCH VIA THE OCCUPANT.
 6. EMERGENCY LIGHTING INVERTER WITH 0-10V DIMMING CONTROL OUTPUT, PHILIPS ELIS-100 OR APPROVED EQUAL. SET EMERGENCY DIMMING LEVEL OUTPUT TO 40%.
 7. FURNISH AND INSTALL AN 18"x18" STEEL ACCESS PANEL W/ HINGED DOOR FLUSH MOUNTED IN GYPSUM BOARD CEILING. ACCESS PANEL SHALL BE PAINTED TO CEILING FINISH. ACCESS FOR SERVICING DOWNLIGHT FIXTURE(S) REMOTE MOUNTED DRIVERS.

BUILDING 2012 - ELECTRICAL LIGHTING PLAN M12
SCALE: 1/8" = 1'-0" E102



Order Plans

Southern A&E ARCHITECTS & ENGINEERS
 7951 Tron Circle
 Austell, Ga. 30168
 (770) 819-7777

REVISED: MAR 08, 2018
 DATE: February 28, 2018
 JOB NUMBER: 01-647-061

FACILITY CODE NUMBER: 66-4-1050
 RENOVATIONS TO
BELWOOD ELEMENTARY SCHOOL
 GORDON COUNTY BOARD OF EDUCATION
 CALHOUN, GEORGIA

STATE OF GEORGIA REGISTERED ARCHITECT
 STATE OF GEORGIA REGISTERED ARCHITECT

DRAWING NUMBER: **E102**
R1.A1