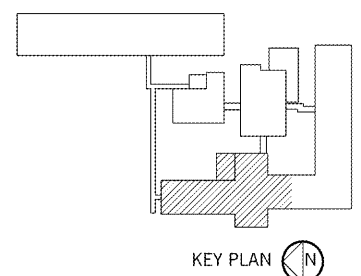
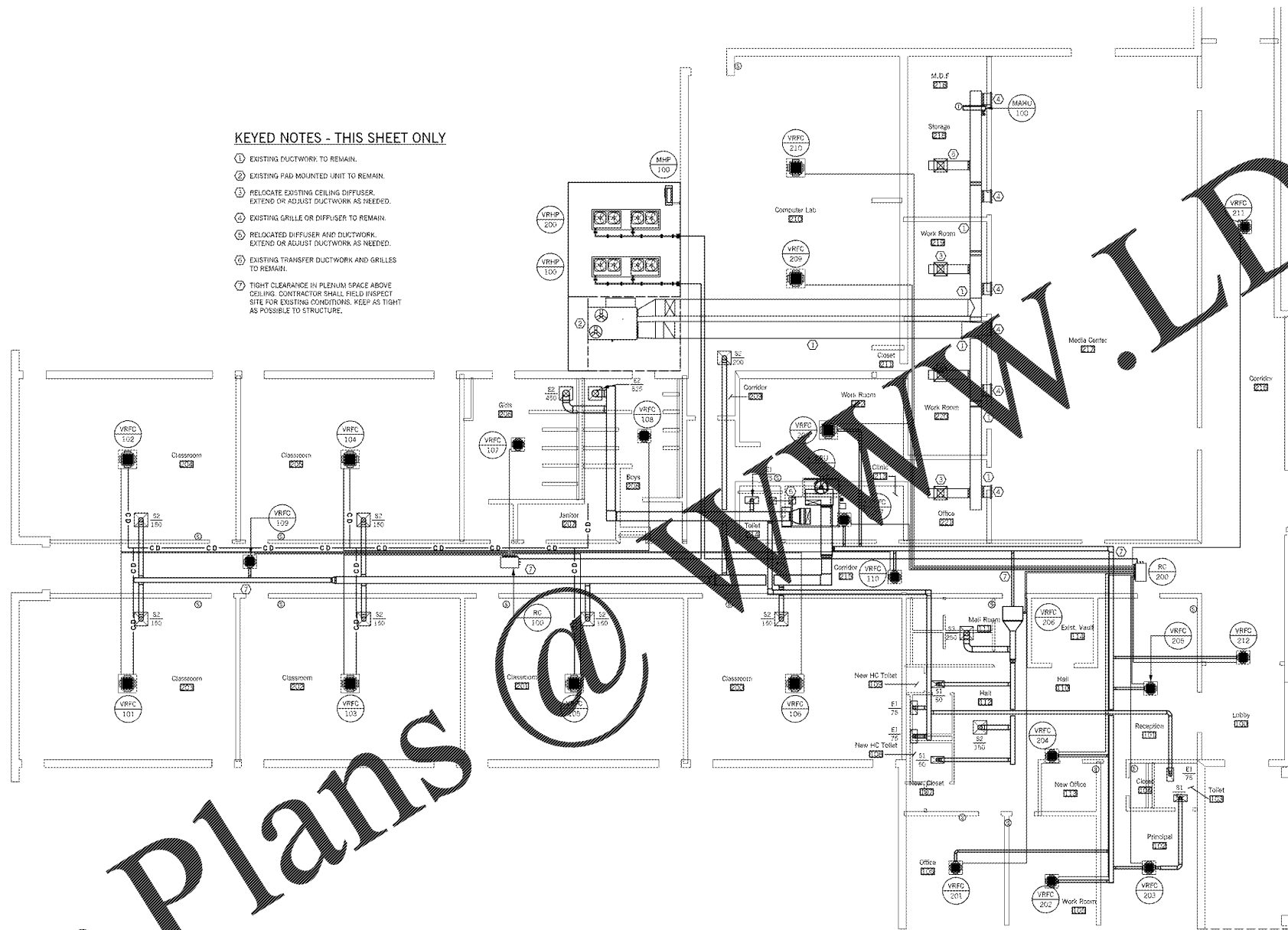


Order Plans

WWW.LDILine.com

**KEYED NOTES - THIS SHEET ONLY**

- ① EXISTING DUCTWORK TO REMAIN.
- ② EXISTING PAD MOUNTED UNIT TO REMAIN.
- ③ RELOCATE EXISTING CEILING DIFFUSER. EXTEND OR ADJUST DUCTWORK AS NEEDED.
- ④ EXISTING GRILLE OR DIFFUSER TO REMAIN.
- ⑤ RELOCATED DIFFUSER AND DUCTWORK. EXTEND OR ADJUST DUCTWORK AS NEEDED.
- ⑥ EXISTING TRANSFER DUCTWORK AND GRILLES TO REMAIN.
- ⑦ TIGHT CLEARANCE IN PLENUM SPACE ABOVE CEILING. CONTRACTOR SHALL FIELD INSPECT SITE FOR EXISTING CONDITIONS. KEEP AS TIGHT AS POSSIBLE TO STRUCTURE.



← HVAC RENOVATION FLOOR PLAN - BUILDING 2012 L13 M102  
1/8" = 1'-0"

<b>Southern A&amp;E</b> 7951 Iron Circle Austell, Ga. 30168 (770) 819-7777 architects & engineers	REVISED DATE February 28, 2018
	FACILITY CODE NUMBER: 66-1050 RENOVATIONS TO: <b>BELWOOD ELEMENTARY SCHOOL</b> GORDON COUNTY BOARD OF EDUCATION CALHOUN, GEORGIA
DRAWING NUMBER <b>M102</b>	