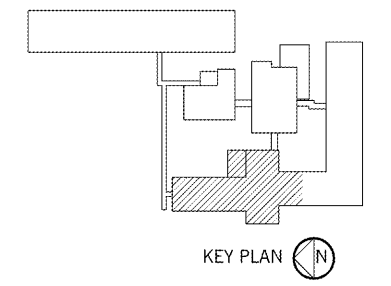
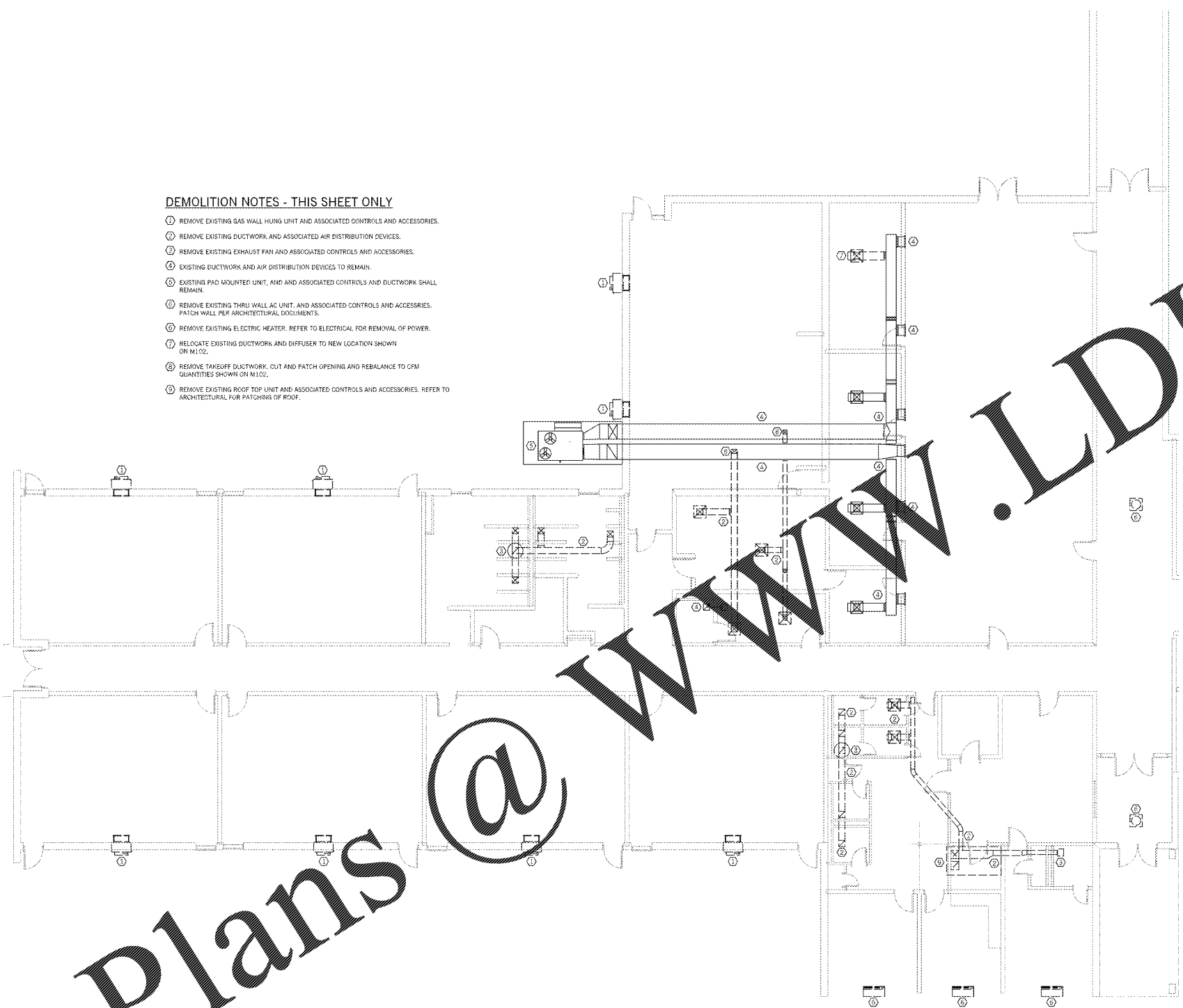


1 2 3 4 5 6 7 8 9 10 11 12 13 14 15 16 17 18 19 20

A  
B  
C  
D  
E  
F  
G  
H  
I  
J  
K  
L  
M  
N

**DEMOLITION NOTES - THIS SHEET ONLY**


- ① REMOVE EXISTING GAS WALL HUNG UNIT AND ASSOCIATED CONTROLS AND ACCESSORIES.
- ② REMOVE EXISTING DUCTWORK AND ASSOCIATED AIR DISTRIBUTION DEVICES.
- ③ REMOVE EXISTING EXHAUST FAN AND ASSOCIATED CONTROLS AND ACCESSORIES.
- ④ EXISTING DUCTWORK AND AIR DISTRIBUTION DEVICES TO REMAIN.
- ⑤ EXISTING PAD MOUNTED UNIT, AND ASSOCIATED CONTROLS AND DUCTWORK SHALL REMAIN.
- ⑥ REMOVE EXISTING THRU WALL AC UNIT, AND ASSOCIATED CONTROLS AND ACCESSORIES. PATCH WALL PER ARCHITECTURAL DOCUMENTS.
- ⑦ REMOVE EXISTING ELECTRIC HEATER. REFER TO ELECTRICAL FOR REMOVAL OF POWER.
- ⑧ RELOCATE EXISTING DUCTWORK AND DIFFUSER TO NEW LOCATION SHOWN ON M102.
- ⑨ REMOVE TAKEOFF DUCTWORK, CUT AND PATCH OPENING AND REBALANCE TO CFM QUANTITIES SHOWN ON M102.
- ⑩ REMOVE EXISTING ROOF TOP UNIT AND ASSOCIATED CONTROLS AND ACCESSORIES. REFER TO ARCHITECTURAL FOR PATCHING OF ROOF.



← HVAC DEMOLITION FLOOR PLAN - BUILDING 2012 L12  
M101  
1/8" = 1'-0"

Order Plans @

WWW.LDILine.com

<b>Southern A&amp;E</b>		REVISED
7951 Iron Circle Austell, Ga. 30168 (770) 819-7777		DATE February 28, 2018
architects & engineers		JOB NUMBER 01-647-061
© COPYRIGHT 2018 BY SOUTHERN A&E, LLC. ALL RIGHTS RESERVED. THIS DOCUMENT IS THE PROPERTY OF SOUTHERN A&E, LLC AND SHALL NOT BE COPIED OR REPRODUCED IN WHOLE OR IN PART WITHOUT EXPRESS WRITTEN CONSENT FROM SOUTHERN A&E, LLC.		
FACILITY CODE NUMBER: 66-1050 RENOVATIONS TO:		
<b>BELWOOD ELEMENTARY SCHOOL</b>		
GORDON COUNTY BOARD OF EDUCATION CALHOUN, GEORGIA		
 DANIEL C. WALDRON REGISTERED ENGINEER	DRAWING NUMBER <b>M101</b>	