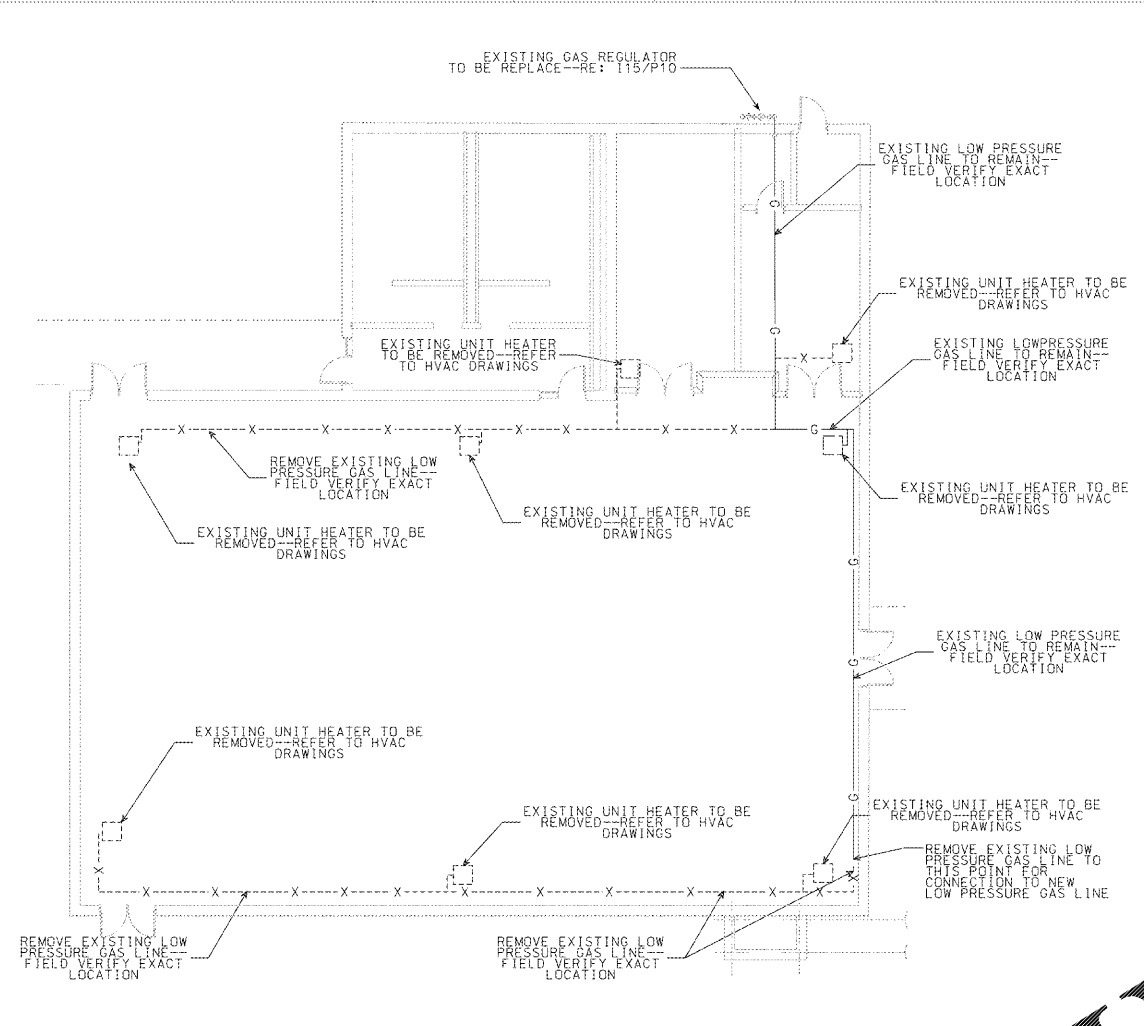
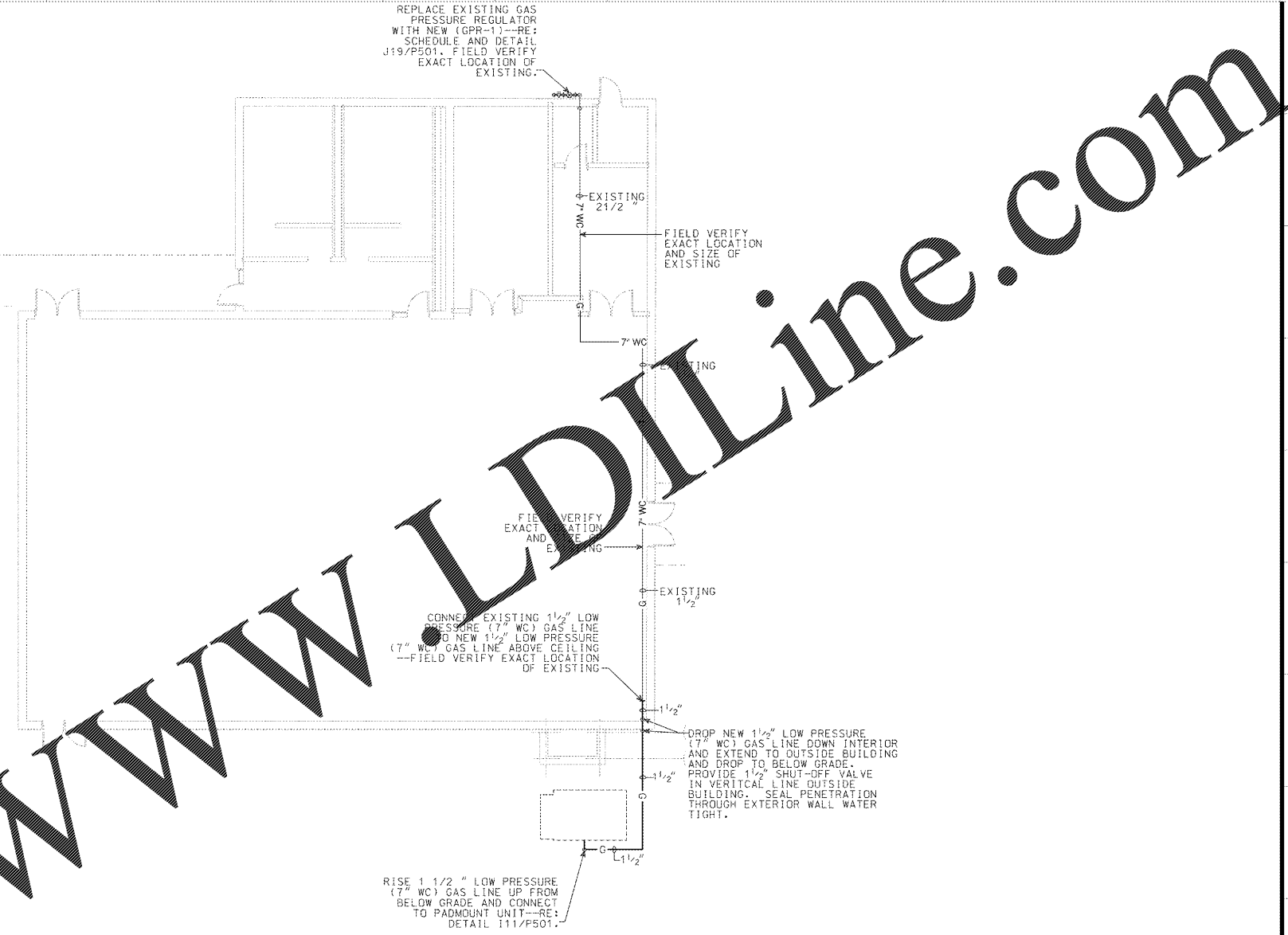


1 2 3 4 5 6 7 8 9 10 11 12 13 14 15 16 17 18 19 20

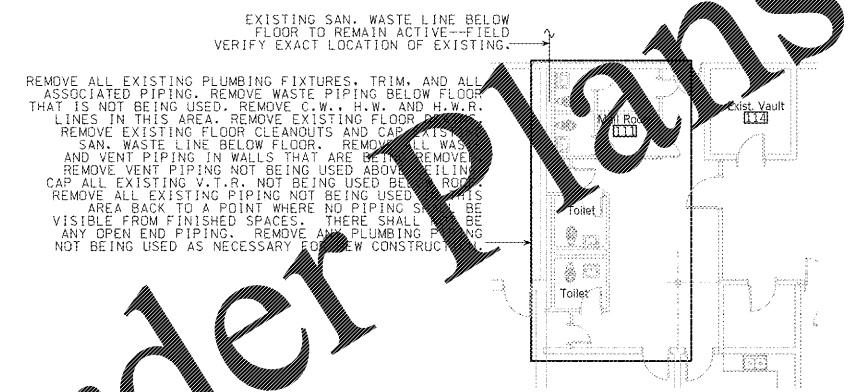
A B C D E F G H I J K L M N



**GAS DEMOLITION FLOOR PLAN - GYM** (H6)  
 SCALE: 1/8" = 1'-0"  
 P101



**GAS FLOOR PLAN - GYM - NEW WORK** (I15)  
 SCALE: 1/8" = 1'-0"  
 P101



**PARTIAL PLUMBING DEMOLITION PLAN - WING "A"** (M7)  
 SCALE: 1/8" = 1'-0"  
 P101

Order Plans @

WWW.LDILine.com

**Southern A&E** architects & engineers  
 7951 Troon Circle  
 Austell, Ga. 30168  
 (770) 819-7777

DATE: February 28, 2018  
 JOB NUMBER: 01-647-061

FACILITY CODE NUMBER: 664-1050  
 RENOVATIONS TO:  
**BELWOOD ELEMENTARY SCHOOL**  
 GORDON COUNTY BOARD OF EDUCATION  
 CALHOUN, GEORGIA

REGISTERED ARCHITECT  
 REGISTERED ENGINEER  
 MICHAEL C. WALDRUP

DRAWING NUMBER: **P101**