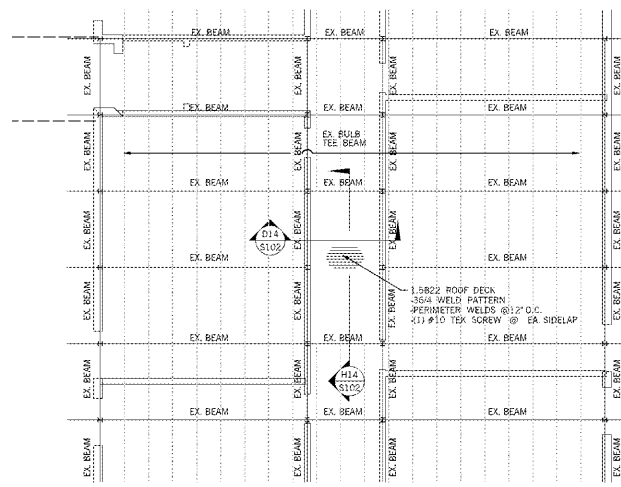


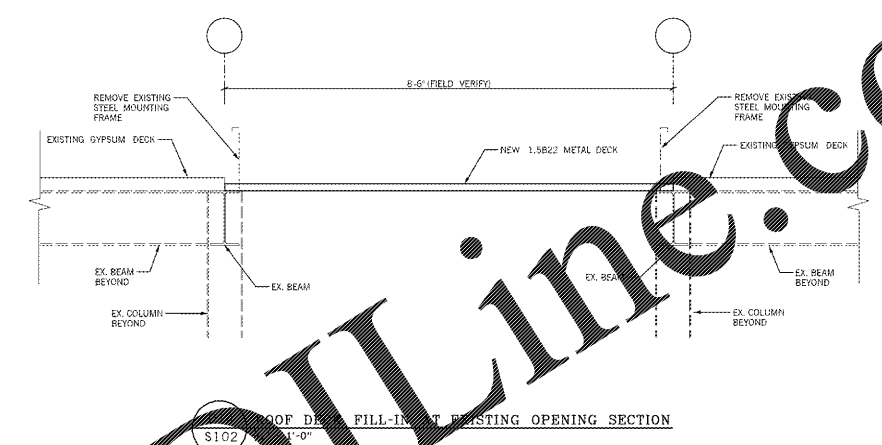
1 2 3 4 5 6 7 8 9 10 11 12 13 14 15 16 17 18 19 20

A
B
C
D
E
F
G
H
I
J
K
L
M
N

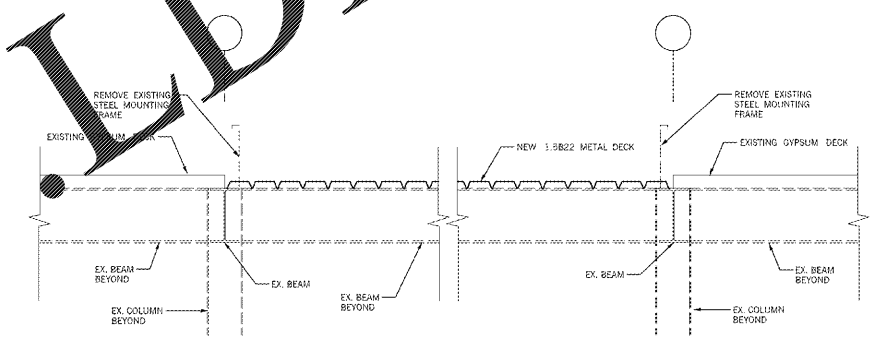


PARTIAL FRAMING PLAN - BLDG. 2011
1/8" = 1'-0"

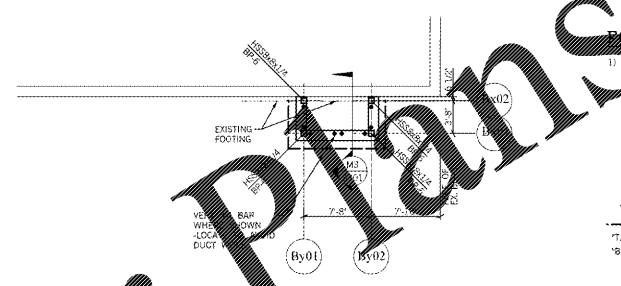
FRAMING PLAN NOTES
1) SEE SHEET S001 FOR THE FOLLOWING:
STEEL DECK ATTACHMENT DETAIL
GENERAL NOTES



S102 ROOF DECK FILL-IN AT EXISTING OPENING SECTION
1'-0"



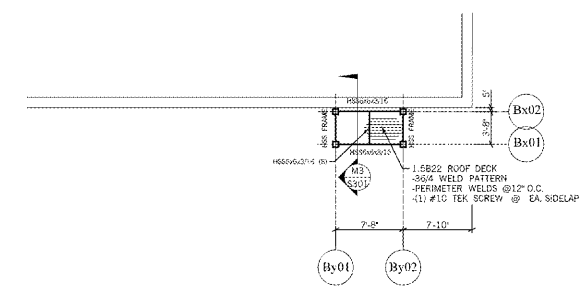
H14 ROOF DECK FILL-IN AT EXISTING OPENING SECTION
S102 7/4" - 1'-0"



FOUNDATION PLAN - BLDG 2020 MECH. CHASE
1/8" = 1'-0"

FOUNDATION PLAN NOTES
1) SEE SHEET S001 FOR THE FOLLOWING:
CONCRETE JOINTS
TURNED DOWN SLAB
FOOTING SCHEDULE
BASE PLATE SCHEDULE
GENERAL NOTES

FOUNDATION LEGEND
FOOTING
"T.D." TURNED DOWN SLAB
"BP-1" BASE PLATE MARK, SEE SCHEDULE



FRAMING PLAN - BLDG 2020 MECH. CHASE
1/8" = 1'-0"

FRAMING PLAN NOTES
1) SEE THE FOUNDATION PLAN FOR COLUMN SIZES.
2) TOP OF STEEL ELEVATION IS MEASURED IN RELATION TO THE BUILDING FINISHED FLOOR ELEVATION.
3) SEE SHEET S001 FOR THE FOLLOWING:
STANDARD BEAM/COLUMN CONNECTIONS
STEEL DECK ATTACHMENT DETAIL
GENERAL NOTES
ROOF OPENING DETAIL
STANDARD Lintel SCHEDULE
BEAM & PLATE Lintel SCHEDULE

FRAMING LEGEND
"TOS" TOP OF STEEL ELEVATION
(S) SLOPING BEAM

Southern A&E 7951 Iron Circle Austell, Ga. 30168 (770) 819-7777 architects & engineers		REVISED DATE February 28, 2018 JOB NUMBER 01-647-061
FACILITY CODE NUMBER: 66-4-1050 RENOVATIONS TO: BELWOOD ELEMENTARY SCHOOL GORDON COUNTY BOARD OF EDUCATION CALHOUN, GEORGIA		
STATE OF GEORGIA REGISTERED ARCHITECT MICHAEL S. EIDSON		DRAWING NUMBER S102

Order Plans @ WWW.LDILine.com