

## BUILDING SIGN SCHEDULE

**FRONT EXTERIOR ELEVATION:**  
TYPE: OR 49' / 24" AP LINEAR  
DETAIL: REFER TO 5/SG2.1

**RIGHT EXTERIOR ELEVATION:**  
TYPE: NO SIGN  
DETAIL:

**LEFT EXTERIOR ELEVATION:**  
TYPE: NO SIGN  
DETAIL:

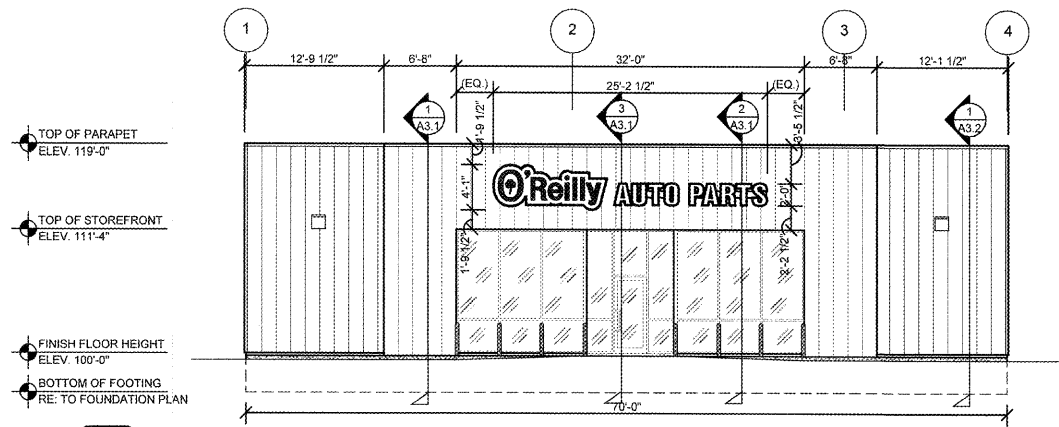
**REAR EXTERIOR ELEVATION:**  
TYPE: NO SIGN  
DETAIL:

## GENERAL NOTES

- (A) CONTACT OWNER'S OR TENANT'S DESIGNATED PROJECT ADMINISTRATOR FOR QUESTIONS OR CLARIFICATIONS.
- (B) BUILDING PERMANENT SIGNAGE OWNER FURNISHED AND INSTALLED. (REFER TO SCOPE OF WORK SCHEDULE) SIGNAGE GRAPHICS PROVIDED FOR REFERENCE ONLY (N.I.C.) AND CONTRACTOR'S COORDINATION WITH SPECIFIC PROJECT CONSTRUCTION CONDITIONS. CONTRACTOR TO PROVIDE BACK AND ROUGH-IN ELECTRICAL AS REQUIRED FOR INSTALLATION. REFER TO A2.1 FOR EXTERIOR BUILDING FINISH.
- (C) REQUIRED GOVERNMENTAL PERMITS FOR PERMANENT TYPE SIGNAGE TO BE PROVIDED BY OWNER OR OTHERS (N.I.C.).

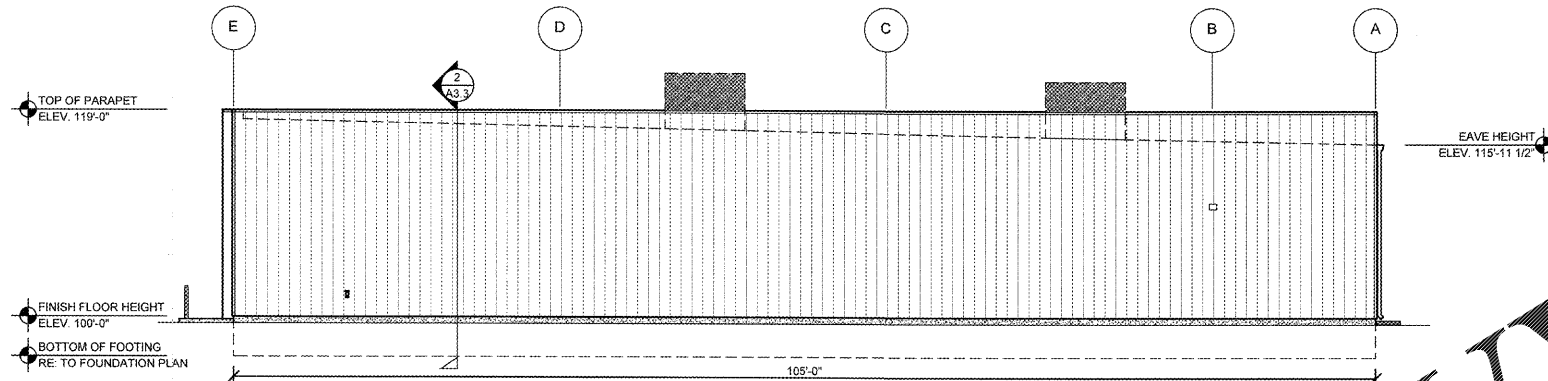
INDIVIDUAL ARCHITECTURAL  
REGISTRATION NO. 3458

DESIGN BY  
ARCHITECTS  
FOR REFERENCE ONLY  
SHEETS BEARING THIS SEAL ARE AUTHENTICATED. RESPONSIBILITY FOR ALL OTHER PLANS, SPECIFICATIONS OR INSTRUMENTS ARE DISCLAIMED.



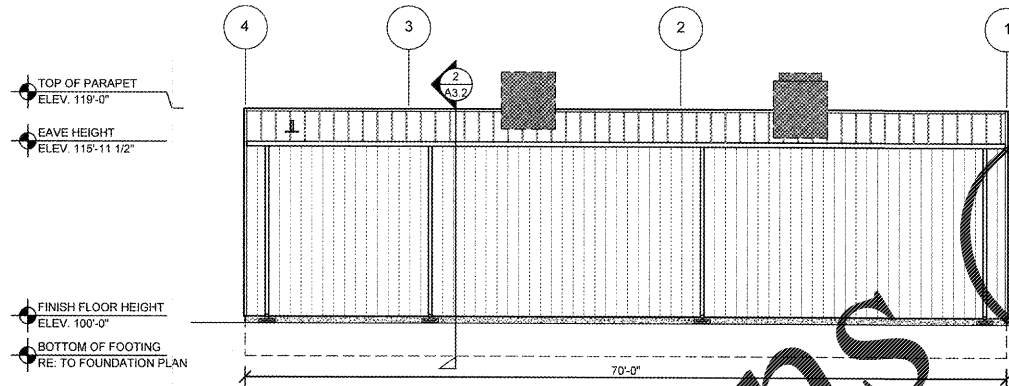
### 1 FRONT EXTERIOR ELEVATION

SG2.1 SCALE: 1/8" = 1'-0"



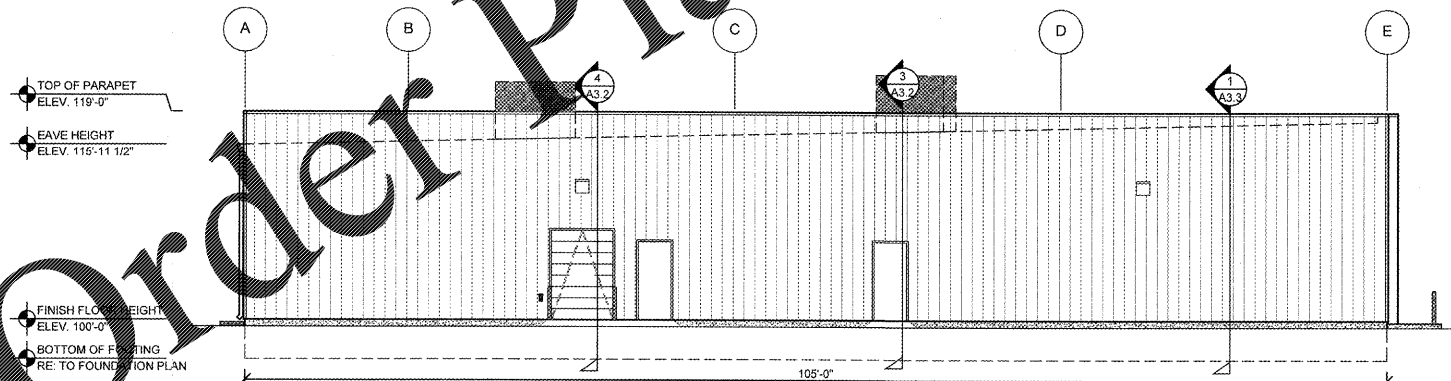
### 2 RIGHT EXTERIOR ELEVATION

SG2.1 SCALE: 1/8" = 1'-0"



### 3 REAR EXTERIOR ELEVATION

SG2.1 SCALE: 1/8" = 1'-0"

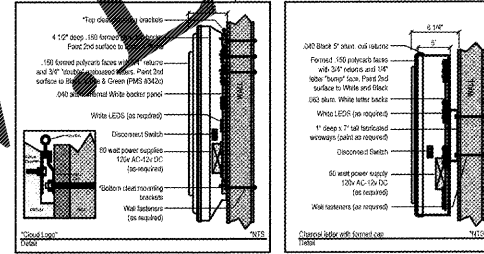


### 4 LEFT EXTERIOR ELEVATION

SG2.1 SCALE: 1/8" = 1'-0"



"O'Reilly" Cloud Logo with "AP" channel returns. 7" (H) x 1" (D) returns. Wire color: OAP RED  
"O'Reilly" text is formed polycarb with embossed graphics. 2nd surface painted graphics. Paint match to: Green (PMS# 342c), Black and White.  
"AP" to have formed polycarb caps with 1/4" channel returns. Black aluminum coil returns. 2nd surface Black and White paint. WHITE LED illumination.



Formed Cloud Logo with "AP" Formed Caps & Channel Returns  
Part# 49/24-L-CldLogo&Chtrs-WFC

### 5 FRONT WALL SIGN DETAILS

SG2.1 SCALE: 1/4" = 1'-0"

**O'Reilly AUTO PARTS**  
CORPORATE OFFICES  
233 SOUTH PATTERSON  
SPRINGFIELD, MISSOURI 65802  
(417) 862-2674 TELEPHONE

PROJECT:  
**NEW O'REILLY AUTO PARTS STORE**  
915 AZALEA DRIVE  
WAYNESBORO, MISSISSIPPI

**BUILDING EXTERIOR SIGNAGE**

**Buddy Webb, NCARB, AIA**  
**Architect - Consultant**  
3057 EAST CAIRO  
SPRINGFIELD, MISSOURI 65802  
(417) 877-1385 TELEPHONE  
(417) 877-9736 FAX

DRAWN BY: JF  
CHECKED BY: LG  
DATE: 01/12/18  
REVISION:

PROJECT NUMBER:  
**WSB**

SHEET NUMBER  
**SG2.1**

© COPYRIGHT 2018 - DESIGNS, DRAWINGS AND SPECIFICATIONS ARE INSTRUMENTS OF SERVICE AND ARE THE PROPERTY OF THE DESIGN PROFESSIONAL. REPRODUCTION PROHIBITED WITHOUT THE EXPRESSED WRITTEN CONSENT OF THE DESIGN PROFESSIONAL.