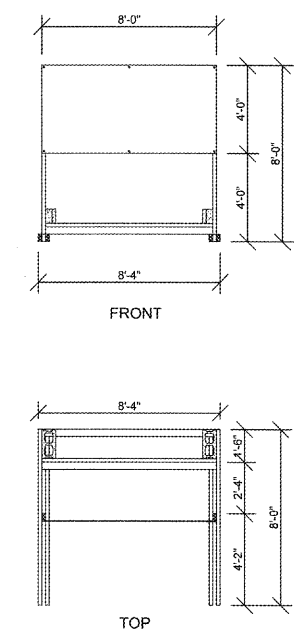
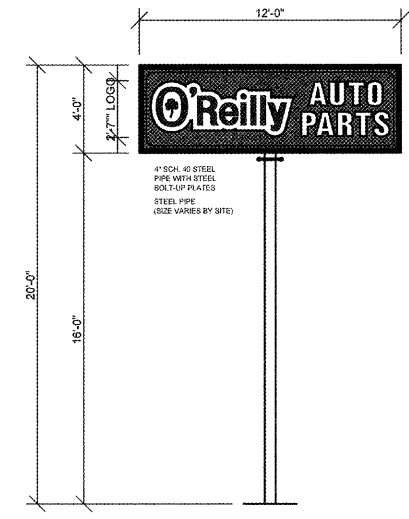
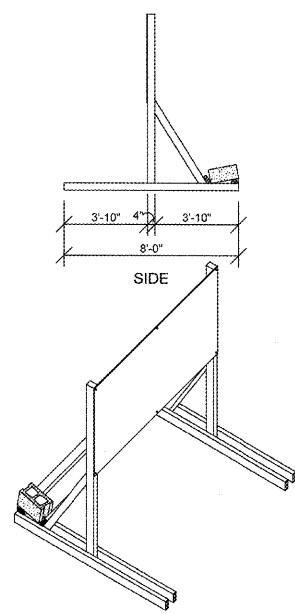


Order Plans @

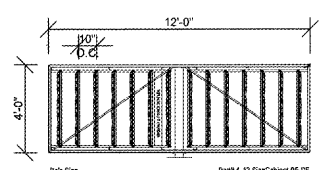


**1 COMING SOON TEMPORARY CONSTRUCTION SIGN**  
 SG1.2 SCALE: 1/4" = 1'-0"



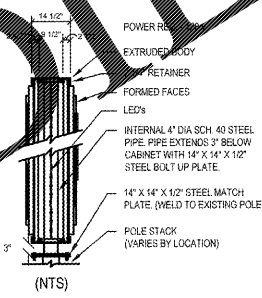
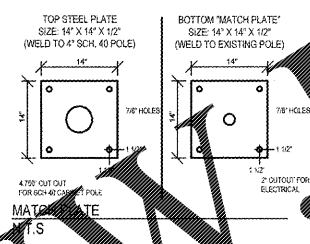
"O'Reilly" Cloud Logo with "AP" channel letters on 2" (H) x 1" (D) wireways. Wireways paint to: OAP RED  
 "O'Reilly" Cloud Logo is formed polycarb with double embossment with 2nd surface painted graphics. Paint match to: Green (PMS 342c), Black and White.  
 "AP" to have formed polycarb cage with 1/4" letter "bumps". Black 5" aluminum coil returns. 2nd surface Black and White paint. WHITE LED illumination.

**2 GROUND SIGN ELEVATION**  
 SG1.2 SCALE: 1/4" = 1'-0"



- 1 14'-1/2" deep extruded cabinet with support structure and 2 1/4" retainers.
- 2 Internal 4" Sch. 40 steel pipe with external 14" x 14" x 1/2" steel bolt-up plate(s).
- 3 GE-Tetra PowerStrip DS White LED's. Part #GEWHDSF66 (7100K) 6 LED's per module (3 LED's per side) on GE-Tetra Mounting Rails. Part #GEDSRLO6. Rails on 10" centers. 42 total modules.
- 4 GE-Tetra Power Supplies. Part #GEP24-180U 24 Volt 90-305VAC 50/60 HZ. Load capacity: 26 modules per power supply. Total of two (2) per display.
- 5 Fabricated aluminum internal power supply wireway.

- 6 Faces are formed out of lexan with 2" draw. "O'Reilly" graphics are double embossed. "Auto Parts" copy is single embossed with painted graphics on 2nd surface. Graphics to match PMS 200c Red, PMS 342c Green Black and White.
- 7 Extruded cabinet with 2 1/4" retainers. Internal 4" Sch. 40 steel pipe with external steel bolt-up plate(s).
- 8 Vertical GE (GEWHDSF66) White DS LED illumination. Paint cabinet to: Gloss Black. Internal pipe/cabling calculation: C80
- 9 Cabinet to be installed with 14" x 14" x 1/2" bolt-up plate(s). Paint to: Gloss Black.



**SITE SIGN SCHEDULE**

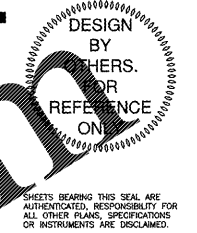
<b>TEMPORARY CONSTRUCTION SIGN</b>	
TYPE:	COMING SOON
DETAIL:	REFER TO 1/SG1.2
<b>SITE SIGN:</b>	
TYPE:	POLE (4H X 12W X 20' H.)
DETAIL:	REFER TO 2/SG1.2

NOTE: REFER TO SHEET SG1.3 FOR FOUNDATION SYSTEM STRUCTURAL REQUIREMENTS.

**GENERAL NOTES**

- A REFER TO PROJECT MANUAL FOR ADDITIONAL REQUIREMENTS
- B CONTACT OWNER'S OR TENANT'S DESIGNATED PROJECT ADMINISTRATOR FOR QUESTIONS OR CLARIFICATIONS.
- C PERMANENT SIGNAGE OWNER FURNISHED AND INSTALLED. (REFER TO SCOPE OF WORK SCHEDULE). SIGNAGE GRAPHICS PROVIDED FOR REFERENCE ONLY (N.I.C.) AND CONTRACTOR'S COORDINATION WITH SPECIFIC PROJECT CONSTRUCTION CONDITIONS.
- D SITE SIGN FOUNDATIONS AND ROUGH-IN ELECTRICAL TO BE PROVIDED BY CONTRACTOR.
- E REQUIRED GOVERNMENTAL PERMITS FOR PERMANENT TYPE SIGNAGE TO BE PROVIDED BY DESIGN COMPANY PERMITTED DIRECTION (N.I.C.).
- F "COMING SOON" TEMPORARY CONSTRUCTION SIGN TO BE PROVIDED BY GENERAL CONTRACTOR. ALL PERMANENT SIGNAGE GRAPHICS TO BE OWNER FURNISHED AND GENERAL CONTRACTOR INSTALLED. LOCATE TEMPORARY CONSTRUCTION SIGN ON SITE SO AS TO BE VISIBLE TO PUBLIC FROM RIGHT-OF-WAY.

INDIVIDUAL ARCHITECTURAL REGISTRATION NO.: 3458



**O'Reilly AUTO PARTS**  
 CORPORATE OFFICES  
 233 SOUTH PATTERSON  
 SPRINGFIELD, MISSOURI 65902  
 (417) 862-2674 TELEPHONE

PROJECT:  
 NEW O'REILLY AUTO PARTS STORE  
 915 AZALEA DRIVE  
 WAYNESBORO, MISSISSIPPI  
**SITE SIGNAGE DETAILS**

**Buddy Webb, NCARB, AIA**  
**Architect - Consultant**  
 3057 EAST CAIRO  
 SPRINGFIELD, MISSOURI 65902  
 (417) 877-1385 TELEPHONE  
 (417) 877-9736 FAX

DRAWN BY: JF  
 CHECKED BY: LG  
 DATE: 01/12/18  
 REVISION:  
 PROJECT NUMBER: WSB

SHEET NUMBER  
**SG1.2**

REPRODUCTION PROHIBITED WITHOUT THE EXPRESSED WRITTEN CONSENT OF THE DESIGN PROFESSIONAL. © COPYRIGHT 2018