

H:\ONE\09844 2/28/2018 2:56 pm

# Order Plans @ WWW.LDENGINEERING.COM

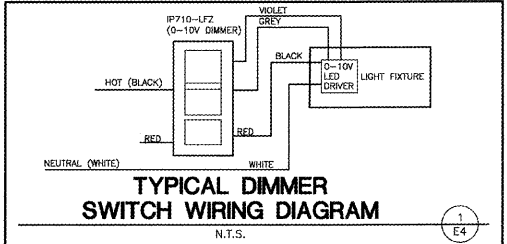
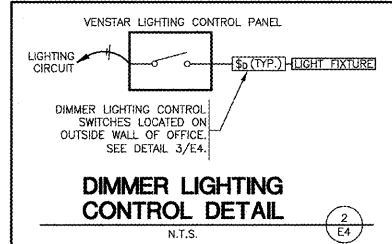
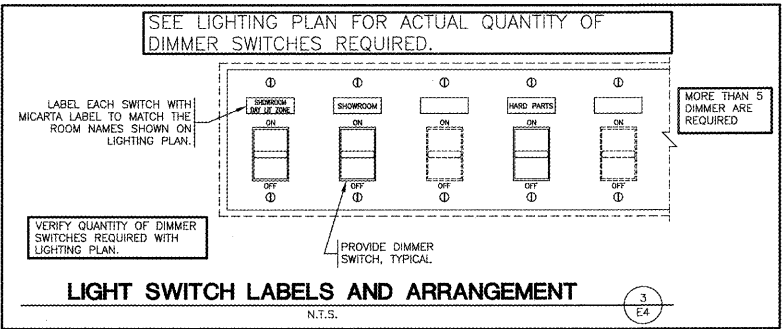
### GENERAL ELECTRICAL NOTES

- DRAWINGS ARE DIAGRAMMATIC & ARE NOT TO BE SCALED. SEE THE ARCHITECTURAL PLANS & FIELD VERIFY CONDITIONS FOR DIMENSIONS.
- ALL ELECTRICAL WORK SHALL COMPLY WITH THE EDITION OF NFPA 70-NATIONAL ELECTRIC CODE (NEC) AS NOTED ON THE COVER SHEET.
- ALL WIRING SHALL BE IN CONDUIT, EXCEPT THAT MC-CABLE MAY BE SUBSTITUTED ONLY AS FOLLOWS:
  - MC-CABLE (MAXIMUM CABLE LENGTH OF 10'-0") MAY BE INSTALLED ONLY FOR BRANCH CIRCUIT WIRING TO LIGHT FIXTURES.
  - MC-CABLE (MAXIMUM CABLE LENGTHS SHOWN ON DETAIL 1/E2) SHALL BE INSTALLED INSIDE OF THE FRONT CHECKOUT COUNTERS.
- FEEDER CONDUIT SHALL BE IMC OR RGS ABOVE GRADE & PVC BELOW GRADE WITH IMC OR RGS ELLS & RISERS. INTERIOR BRANCH CIRCUIT CONDUIT SHALL BE ELECTRICAL METALLIC TUBING. EXTERIOR BRANCH CIRCUIT CONDUIT SHALL BE PVC BELOW GRADE WITH IMC OR RIGID GALVANIZED STEEL CONDUIT CONTINUING ABOVE GRADE. (SPEC 26 05 33)
- COORDINATE ALL WORK WITH OTHER TRADES TO AVOID CONFLICTS. COORDINATION DOES NOT MEAN "I WAS HERE FIRST."
- ALL WIRING IN FINISHED SPACES SHALL BE CONCEALED, UNLESS NOTED OTHERWISE.
- THE CONTRACTOR SHALL BE RESPONSIBLE FOR INSTALLING A COMPLETE & FUNCTIONAL SYSTEM IN ACCORDANCE WITH THE INTENT OF THE PLANS, WHETHER OR NOT EVERY ELEMENT THEREOF IS SPECIFICALLY CALLED OUT.
- COORDINATE ALL EQUIPMENT ROUGH-IN CONNECTION REQUIREMENTS.
- ALL OUTLET BOXES SHALL BE METALLIC. (SPEC 26 05 34)
- ALL CAULKING ON BUILDING PENETRATIONS SHALL BE ELASTOMERIC POLYURETHANE (NO EXCEPTIONS), EQUAL TO "VULKEM" 116. ANY CONTRACTOR WHO USES SILICONE OR ANY OTHER CAULKING WILL BE REQUIRED TO REMOVE & REPLACE WITH ELASTOMERIC POLYURETHANE.
- RECEPTACLES INSTALLED IN RESTROOMS SHALL BE GFCI TYPE OR SHALL BE PROTECTED BY A GFI DEVICE.
- ALL DEVICES SHALL BE IVORY & SHALL BE EQUAL TO THE FOLLOWING:
  - SINGLE POLE SWITCHES ---
  - THREE-WAY SWITCHES ---
  - DUPLEX RECEPTACLE --- (SPEC 26 27 26)
  - GFCI DUPLEX RECEPTACLE ---
  - ISO. GRD. RECEPTACLES ---
- USE DEVICE PLATES MANUFACTURED BY THE DEVICE MANUFACTURER. (SPEC 26 05 34)
- FEEDER & BRANCH CIRCUIT CONDUCTORS SHALL BE COPPER STRANDED, 600V THRU 1000V INSULATION. EXCEPTION: WIRE SIZES #10 AWG & SMALLER SHALL BE 600V. (SPEC 26 05 19)
- CONTRACTOR SHALL PROVIDE A TYPED CIRCUIT DIRECTOR FOR ALL PANELS. (SPEC 26 05 53)
- CONTRACTOR SHALL PROVIDE A ONE(1) YEAR WARRANTY ON ALL WORK PERFORMED.
- CONTRACTOR SHALL PROVIDE NEW WORKING LAMPS IN ALL LIGHT FIXTURES AT COMPLETION.
- CONTRACTOR SHALL COORDINATE WITH & SHARE ALL FEES FOR THE SERVING "ELECTRIC UTILITY CO." TO PROVIDE ELECTRIC SERVICE AS SHOWN ON CONTRACTOR'S PLANS. CONTRACTOR SHALL ALSO INCLUDE ALL FEES FOR THE "SERVING PHONE COMPANY" TO INSTALL NO LESS THAN 10 FEET CABLE TAPPING.
- CONTRACTOR SHALL ARRANGE FOR & PROVIDE ALL PERMITS & FEES FOR HIS SCOPE OF WORK.
- CONTROL WIRING BY HVAC CONTRACTOR. ALL CONNECTIONS BY HVAC CONTRACTOR. SEE SHEET M1.
- APPROVED MANUFACTURERS:
 

A. PANEL BOARDS & SAFETY DEVICES:	B. DEVICES:	C. FLOOR BOXES:
SWITCHES (DISCONNECTS):	"HUBBELL"	"STEEL CITY"
"SQUARE D"	"LEVITON"	"APPLETON"
"C.E."	"PASS & SEYMOUR"	"HUBBELL"
"SEIMENS"		
CUTLER-HAMMER	(SPEC 26 27 26)	(SPEC 26 05 34)
(SPEC 26 24 00)		
- MULTI-WIRE BRANCH CIRCUITS WITH A "SHARED NEUTRAL" ARE NOT ALLOWED FOR SINGLE PHASE CIRCUITS.

### ELECTRICAL SYMBOL LEGEND & ABBREVIATIONS

- \$ SINGLE POLE SWITCH
- \$2 TWO POLE SWITCH
- \$3 THREE-WAY SWITCH
- \$MP MOTOR STARTING SWITCH WITH PILOT LIGHT
- \$x CLASS 1, DIVISION 1 HAZARDOUS LOCATION RATED SWITCH ASSEMBLY
- \$pw WALL MOUNTED OCCUPANCY SENSOR EQUAL TO "LEVITON, 0DS10-ID"
- \$pw2 WALL MOUNTED OCCUPANCY SENSOR EQUAL TO "LEVITON, OSSMD-MD"
- \$se FAN SPEED SWITCH (SUPPLIED BY HVAC CONTRACTOR / INSTALLED BY ELECTRICAL CONTRACTOR)
- \$0 0-10V LED DIMMER SWITCH, EQUAL TO "LEVITON, IP710-LFZ". SEE DETAILS THIS SHEET
- ⊕ SINGLE RECEPTACLE
- ⊕ DUPLEX RECEPTACLE
- ⊕ ISOLATED GROUND DUPLEX RECEPTACLE (ORANGE IN COLOR). SEE DETAIL 1/E3
- ⊕ QUADPLEX RECEPTACLE (TWO DUPLEX RECEPTACLES IN ONE 2-GANG BOX UNDER A SINGLE COVERPLATE)
- ⊕ EXISTING UNPOWERED DUPLEX RECEPTACLE
- ⊕ ISOLATED GROUND QUADPLEX RECEPTACLE (TWO ISO. GRD. DUPLEX RECEPTACLES IN ONE 2-GANG BOX UNDER A SINGLE RED IN COLOR COVERPLATE)
- ⊕ QUADPLEX RECEPTACLE (CIRCUIT TO BE WIRED THRU OCCUPANCY SENSOR) INSTALL A PERMANENT LABEL ON EACH OUTLET STATING "SENSOR CONTROLLED OUTLET". SEE DETAIL ON SHEET E2
- AC ABOVE COUNTER GFCI (GROUND FAULT CIRCUIT INTERRUPTING) DUPLEX RECEPTACLE
- WP WEATHER PROOF GFCI (GROUND FAULT CIRCUIT INTERRUPTING) DUPLEX RECEPTACLE. COVER TO PROVIDE WEATHER PROOF PROTECTION WITH CORD AND PLUG IN USE.
- TELE-POWER POLE
- JUNCTION BOX
- PC REMOTE PHOTO CONTROL
- COMPUTER DATA OUTLET BOX
- 4" SQUARE STEEL BOX MOUNTED FLUSH ON FLOOR W/QUADPLEX RECEPTACLE (SEE ABOVE RECEPTACLE DESCRIPTION). SEE DETAIL 4/E2 FOR INSTALLATION OF BOX
- 4" SQUARE STEEL BOX MOUNTED FLUSH ON FLOOR W/QUADPLEX ISOLATED GROUND RECEPTACLE (SEE ABOVE ISOLATED GROUND RECEPTACLE DESCRIPTION). SEE DETAIL 4/E2 FOR INSTALLATION OF BOX
- 4" SQUARE STEEL BOX MOUNTED FLUSH ON FLOOR W/QUADPLEX ISOLATED GROUND RECEPTACLE (SEE ABOVE ISOLATED GROUND RECEPTACLE DESCRIPTION). SEE DETAIL 4/E2 FOR INSTALLATION OF BOX. OUTLET COVER SHALL BE RED IN COLOR
- 2" x 4" RECTANGULAR STEEL BOX MOUNTED FLUSH ON FLOOR W/DUPLEX RECEPTACLE (SEE ABOVE RECEPTACLE DESCRIPTION). SEE DETAIL 4/E2 FOR INSTALLATION OF BOX
- NEMA L5-30R - SPECIAL RECEPTACLE
- MOTOR
- xx/xx FUSED DISCONNECT (SAFETY) SWITCH W/ SWITCH AMPACITY / FUSE AMPACITY AS INDICATED
- NON-FUSED DISCONNECT (SAFETY) SWITCH
- POWER OR LIGHTING PANEL W/PANEL DESIGNATION SHOWN ON PLAN (SIZES & MOUNTING INDICATED ON PLANS)
- 24 HOUR EGRESS & SECURITY LIGHT, WIRE DIRECT TO ELECTRIC PANEL AHEAD OF ANY LOCAL SWITCHES AND LIGHTING CONTROL PANEL
- WALL/CEILING MOUNTED COMBINATION "EXIT/EMERGENCY" SIGN W/SHADING INDICATING FACES
- EMERGENCY LIGHTING FIXTURE WITH BATTERY



AC LOCATED ABOVE COUNTER	RTU PACKAGED ROOFTOP UNIT	LPO LIN-POWERED OUTLET
AFF ABOVE FINISHED FLOOR	IMC INTERMEDIATE METALLIC TUBING	TS TIME SWITCH
BCU BLOWER COIL UNIT	LC LIGHTING CONTRACTOR	W WALL OUTLET (46" AFF SEE MOUNTING HEIGHTS)
COU CONDENSING UNIT	M MOTOR STARTING	WP WEATHERPROOF (ENCLOSURE)
EF EXHAUST FAN	R RED IN COLOR COVERPLATE	X EXPLOSION PROOF ASSEMBLY
EFU ELECTRIC FURNACE	MP MOTOR STARTING W/PILOT LIGHT	GFCI GROUND FAULT CIRCUIT INTERRUPT
FURN GAS FURNACE	NL NIGHT LIGHT	EMT ELECTRICAL METALLIC TUBING
AHU AIR HANDLER	PEC PHOTOELECTRIC CONTROL	CM CEILING MOUNTED
HP HEAT PUMP UNIT	RGS RIGID GALVANIZED STEEL	



**O'Reilly AUTO PARTS**  
 CORPORATE OFFICES  
 233 SOUTH PATTERSON  
 SPRINGFIELD, MISSOURI 65802  
 (417) 862-2874 TELEPHONE

**PROJECT:**  
 NEW O'REILLY AUTO PARTS STORE  
 915 AZALEA DRIVE  
 WAYNESBORO, MISSISSIPPI

**ELECTRICAL DETAILS**

**mfec**  
 Malone Finkle Eckhardt & Collins, Inc.  
 Consulting Engineers  
 3333 E. Battlefield Rd., Suite 1000  
 Springfield, Missouri 65804  
 phone 417.881.0020  
 fax 417.881.0053  
 mfec.com

DRAWN BY: **MVS** CHECKED BY: **JER**  
 DATE: **01/12/18**  
 REVISION:  
 PROJECT NUMBER: **WSB**  
 SHEET NUMBER: **E4**

COPYRIGHT 2018 BY DESIGN. DRAWINGS AND SPECIFICATIONS ARE INSTRUMENTS OF SERVICE AND ARE THE PROPERTY OF THE DESIGN PROFESSIONAL. REPRODUCTION WITHOUT THE EXPRESSED WRITTEN CONSENT OF THE DESIGN PROFESSIONAL IS PROHIBITED.