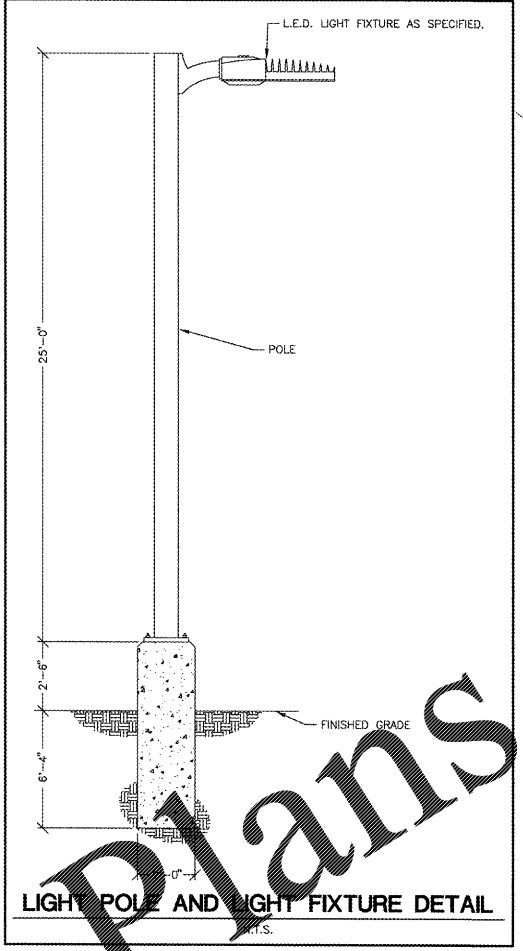




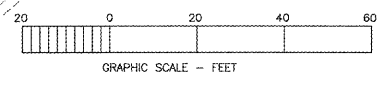
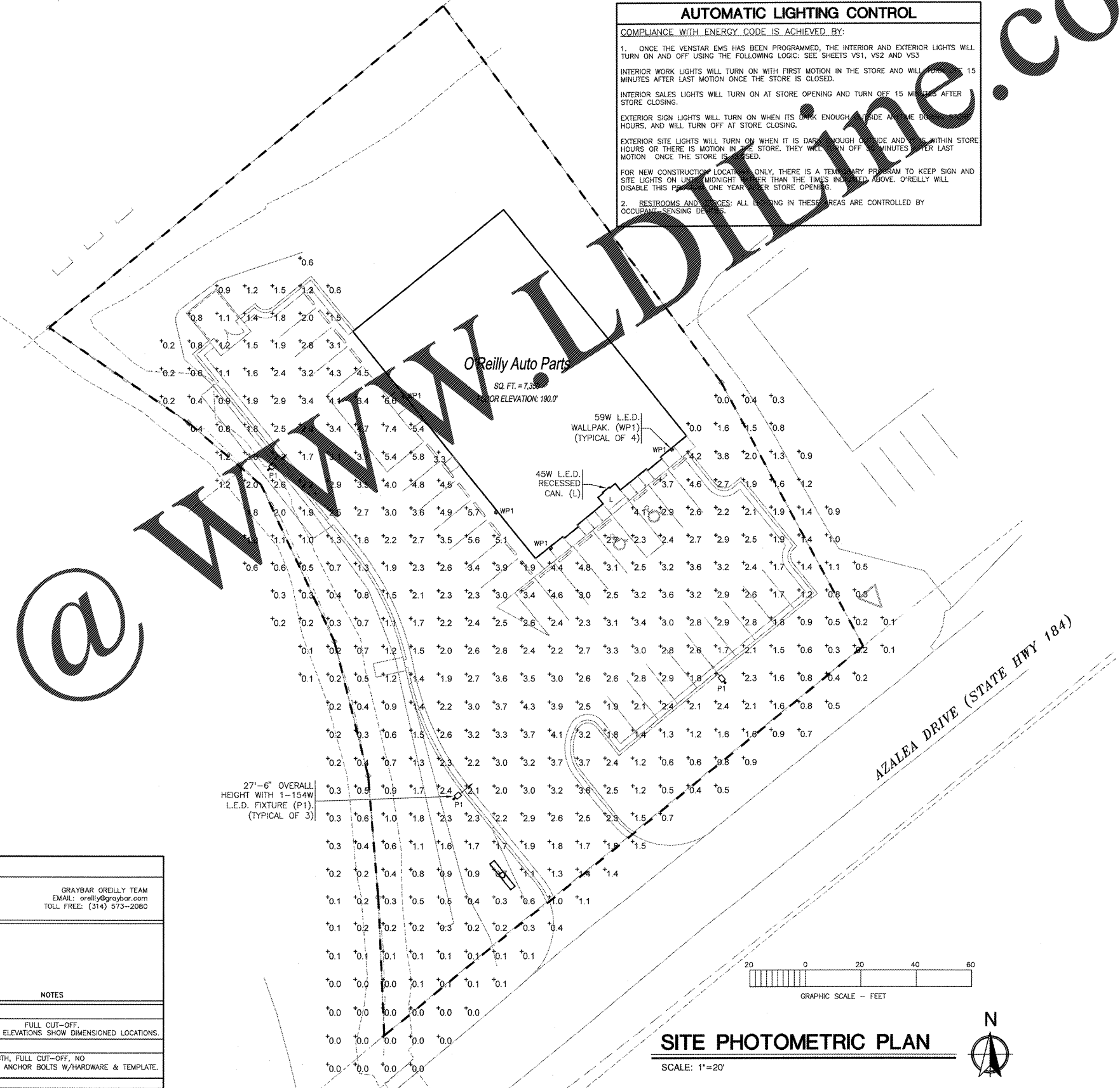
O'Reilly AUTO PARTS
 CORPORATE OFFICES
 233 SOUTH PATTERSON
 SPRINGFIELD, MISSOURI 65802
 (417) 862-2674 TELEPHONE

AUTOMATIC LIGHTING CONTROL
 COMPLIANCE WITH ENERGY CODE IS ACHIEVED BY:
 1. ONCE THE VENSTAR EMS HAS BEEN PROGRAMMED, THE INTERIOR AND EXTERIOR LIGHTS WILL TURN ON AND OFF USING THE FOLLOWING LOGIC: SEE SHEETS VS1, VS2 AND VS3
 INTERIOR WORK LIGHTS WILL TURN ON WITH FIRST MOTION IN THE STORE AND WILL TURN OFF 15 MINUTES AFTER LAST MOTION ONCE THE STORE IS CLOSED.
 INTERIOR SALES LIGHTS WILL TURN ON AT STORE OPENING AND TURN OFF 15 MINUTES AFTER STORE CLOSING.
 EXTERIOR SIGN LIGHTS WILL TURN ON WHEN IT IS DARK ENOUGH TO BE SEEN FROM THE DRIVEWAY, AND WILL TURN OFF AT STORE CLOSING.
 EXTERIOR SITE LIGHTS WILL TURN ON WHEN IT IS DARK ENOUGH TO BE SEEN FROM THE DRIVEWAY, AND WILL TURN OFF AT STORE CLOSING.
 FOR NEW CONSTRUCTION LOCATIONS ONLY, THERE IS A TEMPORARY PROGRAM TO KEEP SIGN AND SITE LIGHTS ON UNTIL MIDNIGHT, UNLESS THE TIMES INDICATED ABOVE. O'REILLY WILL DISABLE THIS PROGRAM ONE YEAR AFTER STORE OPENING.
 2. RESTROOMS AND OFFICES: ALL LIGHTING IN THESE AREAS ARE CONTROLLED BY OCCUPANCY SENSING DEVICES.



LIGHT POLE AND LIGHT FIXTURE DETAIL
 P.T.S.

EXTERIOR LIGHT FIXTURE SCHEDULE									
ALL ITEMS LISTED ON THE "LIGHT FIXTURE SCHEDULE" WILL BE SUPPLIED BY GRAYBAR (UNLESS OTHERWISE NOTED). ITEMS SHALL BE DIRECT ORDERED FROM GRAYBAR OR REQUESTED FROM THE LISTED ELECTRICAL EQUIPMENT DISTRIBUTOR.					GRAYBAR ELECTRIC CO., INC. 11885 LACKLAND ROAD ST. LOUIS, MO 63146		GRAYBAR O'REILLY TEAM EMAIL: oreilly@graybar.com TOLL FREE: (314) 573-2080		
MARK	MFR	CATALOG NUMBER	SUPPLY VOLTAGE	FINISH	MOUNTING SURFACE	LAMP TYPE	WATTAGE	NOTES	
EXTERIOR LIGHTS									
WP1	LSI	XWM-FT-LED-06-50-UE-BRZ	120	DARK BRONZE	X		59	FULL CUT-OFF, ARCHITECTURAL ELEVATIONS SHOW DIMENSIONED LOCATIONS.	
LED POLE LIGHTS									
P1	LSI	XALM-3-LED-SS-50-UE-BRZ	120	DARK BRONZE	X	X	154	25' POLE LENGTH, FULL CUT-OFF, NO SUBSTITUTIONS. ANCHOR BOLTS W/HARDWARE & TEMPLATE.	
FIXTURE QUANTITY TO BE VERIFIED WITH SITE PLAN QUANTITY									



SITE PHOTOMETRIC PLAN

SCALE: 1"=20'



H:\ORE\0984\en 2018 - 8.23 en

Order Plans

PROJECT:
 NEW O'REILLY AUTO PARTS STORE
 915 AZALEA DRIVE
 WAYNESBORO, MISSISSIPPI
SITE PHOTOMETRIC PLAN AND DETAILS

mfec
 Malone Finkbe Eckhardt & Collins, Inc.
 Consulting Engineers
 3333 E. Battleground Rd., Suite 1000
 Springfield, Missouri 65804
 Phone: 417-881-0020
 Fax: 417-881-0053
 mfec.com

DRAWN BY: MVS
 CHECKED BY: JEE
 DATE: 01/12/18
 REVISION:
 PROJECT NUMBER: WSB
 SHEET NUMBER

SP1