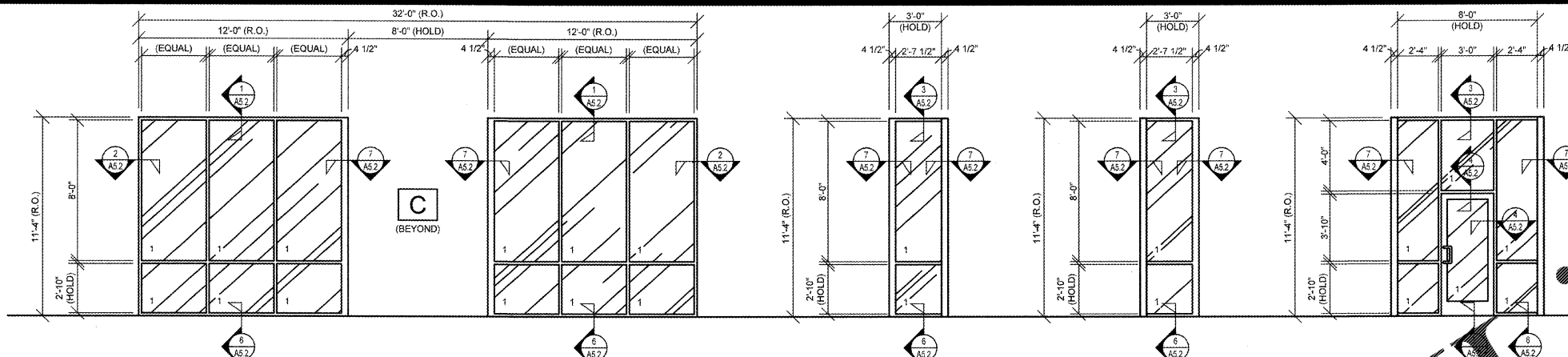


WINDOW TYPES



A ALUMINUM STOREFRONT FRAMING (2" X 4 1/2") SYSTEM, THERMALLY BROKEN, FIXED UNIT.

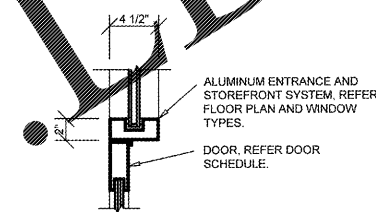
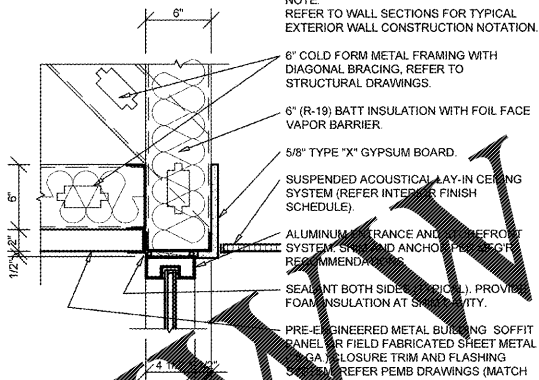
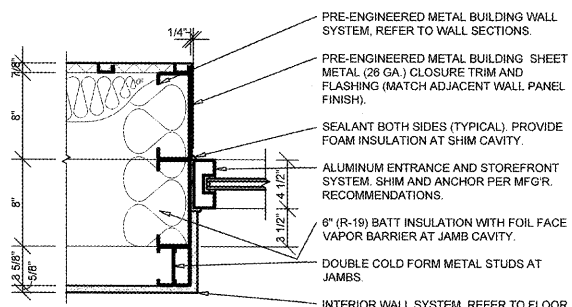
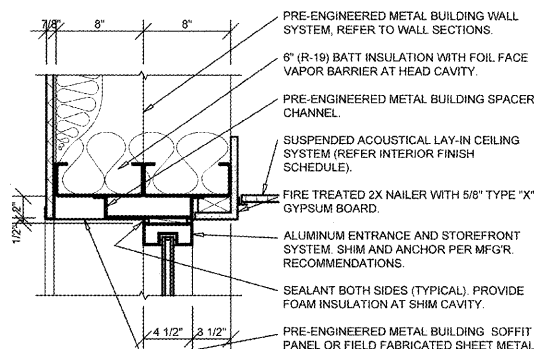
B1 ALUMINUM STOREFRONT FRAMING (2" X 4 1/2") SYSTEM, THERMALLY BROKEN, FIXED UNIT.

B2 ALUMINUM STOREFRONT FRAMING (2" X 4 1/2") SYSTEM, THERMALLY BROKEN, FIXED UNIT.

C ALUMINUM STOREFRONT FRAMING (2" X 4 1/2") SYSTEM, THERMALLY BROKEN, FIXED UNIT.

NOTE: REFER TO WALL SECTIONS FOR TYPICAL EXTERIOR WALL CONSTRUCTION NOTATION

NOTE: REFER TO WALL SECTIONS FOR TYPICAL EXTERIOR WALL CONSTRUCTION NOTATION

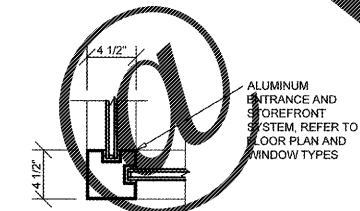
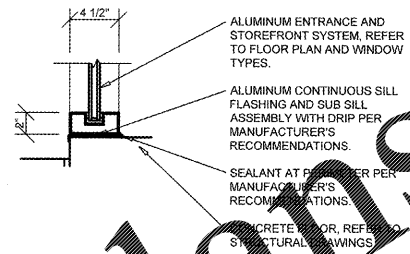
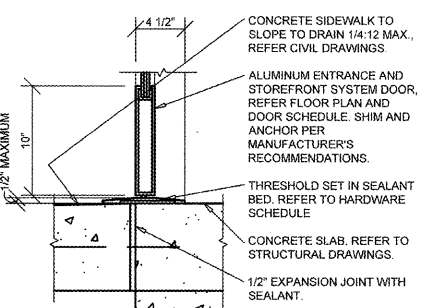


1 HEAD DETAIL
A5.2 SCALE: 1 1/2" = 1'-0"

2 JAMB DETAIL
A5.2 SCALE: 1 1/2" = 1'-0"

3 HEAD DETAIL
A5.2 SCALE: 1 1/2" = 1'-0"

4 HEAD / JAMB DETAIL
A5.2 SCALE: 1 1/2" = 1'-0"



5 SILL DETAIL
A5.2 SCALE: 1 1/2" = 1'-0"

6 SILL DETAIL
A5.2 SCALE: 1 1/2" = 1'-0"

7 JAMB DETAIL
A5.2 SCALE: 1 1/2" = 1'-0"

GENERAL NOTES

- A REFER TO PROJECT MANUAL FOR ADDITIONAL REQUIREMENTS.
- B REFER TO BUILDING CODE SUMMARY FOR PROJECT STRUCTURAL DESIGN CRITERIA. WINDOW FRAMING AND ANCHORING SYSTEMS SHALL BE DESIGNED BY MANUFACTURER TO CONFORM TO PERFORMANCE AND TESTING REQUIREMENTS SPECIFIED.
- C REFER TO FLOOR PLAN, ELEVATIONS, AND SECTIONS FOR ADDITIONAL REQUIREMENTS.
- D WINDOW TYPE ELEVATIONS SHOWN VIEWED FROM EXTERIOR SIDE.
- E REFER TO EXTERIOR FINISH SCHEDULE FOR ALUMINUM WINDOW FRAMING COLORS, PERIMETER SEALANT COLOR, MATCH WINDOW FRAMING COLOR UNLESS OTHERWISE NOTED.
- F ALL DIMENSIONS TO ROUGH FACE OF FRAMING UNLESS OTHERWISE INDICATED. FIELD VERTICALLY FINISH ROUGH OPENINGS PRIOR TO INSTALLATION.
- G REFER TO DOOR AND HARDWARE SCHEDULES FOR ADDITIONAL REQUIREMENTS.
- H SECURITY GLASS LITTER MAY BE REQUIRED. CONTACT PROJECT ADMINISTRATOR FOR VERIFICATION. (REFER TO SCOPE OF WORK SCHEDULE) PROVIDE ADDITIONAL SUPPORT FRAMING SYSTEM AS REQUIRED.
- I WHEN WIND SPEED IS EQUAL TO OR GREATER THAN 120 MPH A STORM PANEL SYSTEM SHALL BE OWNER FURNISHED AND INSTALLED. CONTACT PROJECT ADMINISTRATOR TO VERIFY AND COORDINATE WITH SYSTEM PROVIDED BY OTHERS. (REFER TO SCOPE OF WORK SCHEDULE) PROVIDE ADDITIONAL SUPPORT FRAMING SYSTEM AS REQUIRED.
- J CONTRACTOR'S OPTION TO DIRECT ORDER AND PURCHASE WINDOW FRAMING SYSTEM AND GLAZING FROM THE FOLLOWING SUPPLIER (REFER TO SCOPE OF WORK SCHEDULE):

COULTER & COMPANY
13711 E. 66TH ST. N.
OWASSO, OK 74055
PHONE: (918) 272-4494
FAX: (918) 272-7903
EMAIL: carl@coulterglass.com
CONTACT: Carl Yorman

GLAZING SCHEDULE

- 1 1" INSULATED SAFETY GLAZING (1/4" VITRO "SOLEXIA" EXTERIOR PANE / 1/4" CLEAR INTERIOR PANE) SHADING COEFFICIENT 0.57



O'Reilly AUTO PARTS
CORPORATE OFFICES
233 SOUTH PATTERSON
SPRINGFIELD, MISSOURI 65802
(417) 862-2674 TELEPHONE

PROJECT:
NEW O'REILLY AUTO PARTS STORE
915 AZALEA DRIVE
WAYNESBORO, MISSISSIPPI
WINDOW SCHEDULE

Buddy Webb, NCARB, AIA
Architect - Consultant
3057 EAST CAIRO
SPRINGFIELD, MISSOURI 65802
(417) 877-1385 TELEPHONE
(417) 877-9736 FAX

DRAWN BY: JF
CHECKED BY: LG
DATE: 01/12/18
REVISION:

PROJECT NUMBER:
WSB

SHEET NUMBER
A5.2

Order Plans

INDIVIDUAL ARCHITECTURAL REGISTRATION NO.: 3458
REPRODUCTION WITHOUT THE EXPRESSED WRITTEN CONSENT OF THE DESIGN PROFESSIONAL.
DESIGNS, DRAWINGS AND SPECIFICATIONS ARE INSTRUMENTS OF SERVICE AND ARE THE PROPERTY OF THE DESIGN PROFESSIONAL.