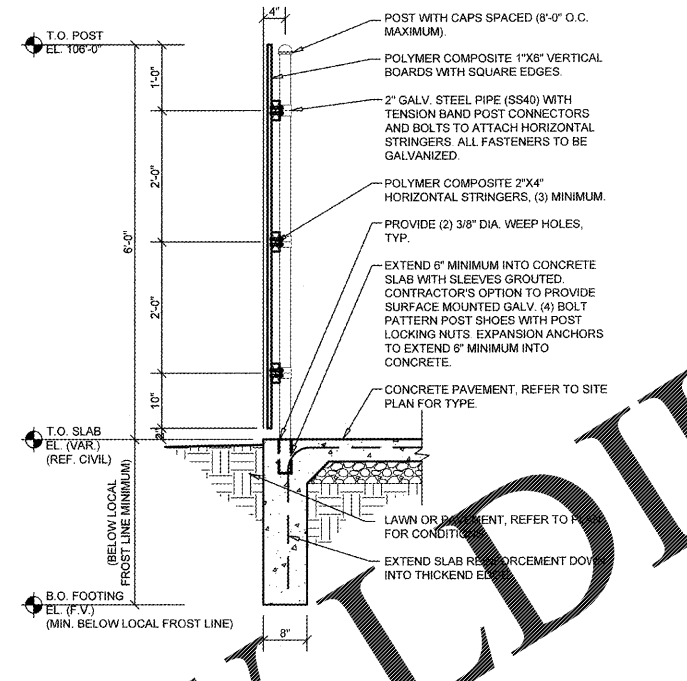
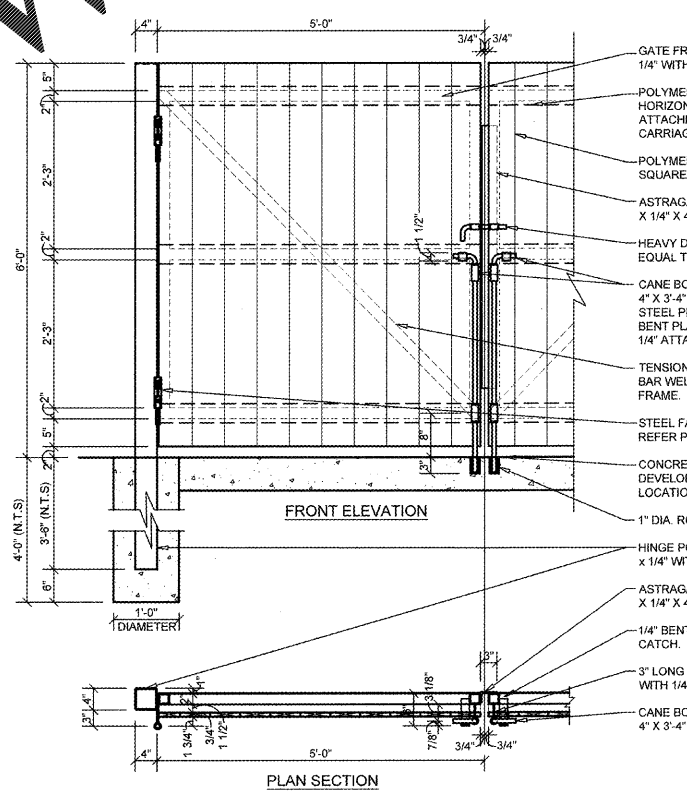


1 POLYMER COMPOSITE MATERIAL SCREEN FENCE REFUSE ENCLOSURE PLAN
 C2.3 SCALE: 3/4" = 1'-0"

NOTE:
 REFER TO SITE DEVELOPMENT PLAN
 FOR REFUSE ENCLOSURE LOCATION
 AND ORIENTATION.



2 SCREEN FENCE SECTION
 C2.3 SCALE: 1/4" = 1'-0"

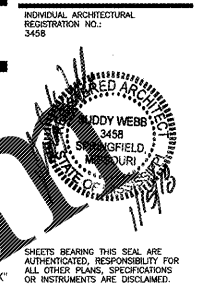


3 SCREEN FENCE GATE DETAILS
 C2.3 SCALE: 3/4" = 1'-0"

GENERAL NOTES

- (A) REFER TO PROJECT MANUAL FOR ADDITIONAL REQUIREMENTS.
- (B) DIMENSIONS ARE TO ROUGH FACE OF CONCRETE, FRAMING, OR CENTER LINE OF STRUCTURE UNLESS OTHERWISE INDICATED.
- (C) REFER TO CIVIL DRAWINGS FOR ADDITIONAL REQUIREMENTS.
- (D) REFER TO ARCHITECTURAL EXTERIOR FINISH SCHEDULE FOR MATERIAL TYPES, COLORS, AND FINISHES. UNLESS OTHERWISE INDICATED PROVIDE FINISHES AS FOLLOWS:

1. ALL NON-GALVANIZED METAL PARTS TO BE PRIMED AND PAINTED (2) COATS SHERWIN WILLIAMS SW 68 "HUNT CREST".
2. POLYMER COMPOSITE MATERIAL COLOR TO BE EQUAL TO "TREX" SELECT SERIES "PEBBLE GRAY". FINAL COLOR TO BE SELECTED BY OWNER FROM MANUFACTURER'S STANDARD SAMPLES.



O'Reilly AUTO PARTS
 CORPORATE OFFICES
 233 SOUTH PATTERSON
 SPRINGFIELD, MISSOURI 65802
 (417) 862-2674 TELEPHONE

PROJECT:
NEW O'REILLY AUTO PARTS STORE
915 AZALEA DRIVE
WAYNESBORO, MISSISSIPPI
SITE DEVELOPMENT DETAILS

Buddy Webb, NCARB, AIA
Architect - Consultant
 3057 EAST CAIRO
 SPRINGFIELD, MISSOURI 65802
 (417) 877-1385 TELEPHONE
 (417) 877-9736 FAX

DRAWN BY: **JF** CHECKED BY: **LG**
 DATE: **01/12/18**
 REVISION:

PROJECT NUMBER:
WSB

SHEET NUMBER

C2.3

Order Plans

© COPYRIGHT 2018 - DESIGNS, DRAWINGS AND SPECIFICATIONS ARE INSTRUMENTS OF SERVICE AND ARE THE PROPERTY OF THE DESIGN PROFESSIONAL. REPRODUCTION PROHIBITED WITHOUT THE EXPRESSED WRITTEN CONSENT OF THE DESIGN PROFESSIONAL.