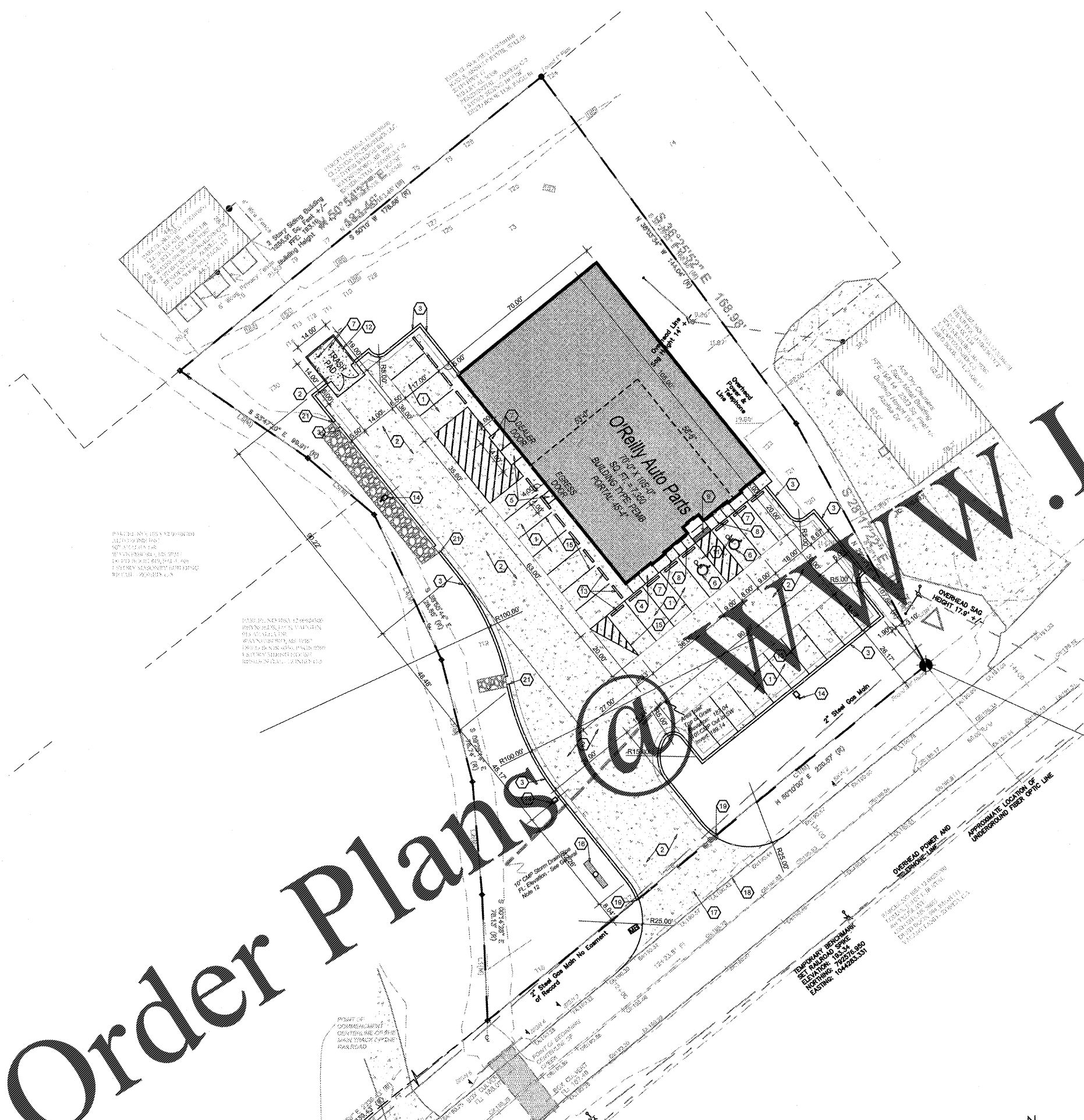


Order Plans

1 SITE DEVELOPMENT PLAN
C2.1 SCALE: 1" = 20'-0"



SYMBOLS LEGEND	
	NEW BUILDING CONSTRUCTION
	AREA OF CONCRETE
	AREA OF PAVING
	NEW POLE SIGN LOCATION
	NEW CONCRETE PAVING BLOCK
	NEW LIGHT POLE LOCATION
	NEW FENCE CONSTRUCTION

SPECIAL NOTE:
POINT OF BEGINNING FOR SITE DEVELOPMENT LAYOUT PARALLEL AND PERPENDICULAR TO SOUTH PROPERTY LINE (IN 50'10"00" E).

SPECIAL NOTE:
PRIOR TO CONTRACT CLOSEOUT, CONTRACTOR SHALL SECURE THE SERVICES OF A REGISTERED LAND SURVEYOR TO PROVIDE SITE SURVEY OF COMPLETED PROJECT CONDITIONS AND SUBMIT FOR REVIEW AND APPROVAL BY OWNER. REFER TO PROJECT MANUAL FOR ADDITIONAL REQUIREMENTS.

GENERAL NOTES	
(A)	REFER TO PROJECT MANUAL FOR ADDITIONAL REQUIREMENTS. ALL ON SITE CONCRETE TO BE 4,000 PSI.
(B)	SITE DIMENSIONS TO FACE OF CONCRETE FOUNDATION, SIDEWALK CURB GUTTER LINE, PROPERTY LINE, OR CENTER LINE OF STRIPING UNLESS OTHERWISE NOTED.
(C)	COORDINATE WORK WITH OTHER SITE RELATED DEVELOPMENT DRAWINGS.
(D)	REFER TO STRUCTURAL DRAWINGS FOR BUILDING DIMENSIONS AND LAYOUT OF SIDEWALKS ADJACENT TO BUILDING PERIMETER.
(E)	PRIOR TO INSTALLATION, CONTRACTOR TO VERIFY LOCATIONS OF LIGHT POLES, LANDSCAPING, AND UTILITIES DO NOT CONFLICT WITH SITE SIGN LOCATION SHOWN. IF CONFLICT IS DISCOVERED, CONTRACTOR TO NOTIFY OWNER. REPRESENTATIVE PRIOR TO PROCEEDING WITH THE WORK.
(F)	FOR BUILDING FRONT SIDEWALK GENERAL DEVELOPMENT LAYOUT CONCEPT, REFER TO DETAIL 2/C2.2.

KEY NOTES	
(1)	CONCRETE PAVING (STANDARD DUTY) AT PARKING AREAS. REFER TO DETAIL 1/C2.2.
(2)	CONCRETE PAVING (HEAVY DUTY) AT DRIVE AREAS, DRIVE APRONS, FIRE LANES, AND REFUSE AREA. REFER TO DETAIL 2/C2.2.
(3)	CONCRETE CURB, REFER TO DETAIL 3/C2.2.
(4)	CONCRETE SIDEWALK CURB, REFER TO DETAIL 4/C2.2. REFER TO STRUCTURAL DRAWINGS FOR LAYOUT OF CONTROL AND EXPANSION JOINTS ADJACENT TO BUILDING PERIMETER.
(5)	CONCRETE SIDEWALK OR DOOR LANDING, REFER TO DETAIL 5/C2.2 AND STRUCTURAL DRAWINGS. LANDING MAY BE POURED MONOLITHIC WITH PAVING IF CONCRETE PAVING IS PROVIDED.
(6)	ACCESSIBLE PARKING SYMBOL PAVEMENT STRIPPING, REFER TO DETAIL 6/C2.2.
(7)	STEEL BOLLARD, REFER TO DETAIL 7/C2.2. PROVIDE (2) AT REFUSE CONTAINER AREA, (2) AT SECTIONAL OVERHEAD FREIGHT DOOR, AND (8) AT FRONT ENTRY. REFER TO STRUCTURAL DRAWINGS FOR LAYOUT OF BOLLARDS ADJACENT TO BUILDING PERIMETER.
(8)	ACCESSIBLE PARKING SIGN, REFER TO DETAIL 8/C2.2.
(9)	DETECTIBLE WARNING SURFACE, REFER TO DETAIL 9/C2.2.
(10)	(NOT USED).
(11)	ACCESSIBLE PARKING SPACE WITH ACCESS AISLE (ADA COMPLIANT) TO SLOPE 2% MAXIMUM IN ALL DIRECTIONS. PROVIDE PAVEMENT MARKINGS TO MATCH STRIPING COLOR UNLESS OTHERWISE REQUIRED TO COMPLY WITH GOVERNING ACCESSIBILITY REGULATIONS.
(12)	REFUSE ENCLOSURE, REFER TO 1/C2.3.
(13)	CONCRETE BUMPER BLOCK (6" W X 5" H X 6'-0" LONG) ANCHORED TO PAVING WITH (2) 1"-6" LONG #4 REBAR.
(14)	PARKING LOT LIGHTING, REFER TO SITE UTILITY PLAN FOR TYPE AND CONSTRUCTION.
(15)	4" WIDE PAVEMENT STRIPING AS SHOWN USING HIGHWAY MARKING PAINT - YELLOW (2 COATS).
(16)	SITE SIGN, REFER TO SHEET SG1.1 FOR TYPE, CONSTRUCTION AND LOCATION. SIGN OWNER FURNISHED AND INSTALLED (REFER TO SCOPE OF WORK SCHEDULE). REFER TO SITE UTILITY PLAN FOR ADDITIONAL REQUIREMENTS.
(17)	CONCRETE DRIVE APRON TO BE INSTALLED PER CITY AND / OR STATE DESIGN STANDARDS. IF NO STANDARDS PROVIDE CONCRETE CONSTRUCTION PER DETAIL 2/C2.2.
(18)	LIMITS OF NEW PAVING. MATCH EXISTING PAVEMENT TRANSITION ELEVATIONS. AT TRANSITIONS OF NEW CONCRETE TO EXISTING CONCRETE PAVEMENT, EPOXY DOWEL 6" MINIMUM INTO EXISTING WITH #4 X 1'-6" SMOOTH DOWELS MATCHING NEW PAVEMENT REINFORCEMENT SPACING. PROVIDE SEALANT AT JOINTS.
(19)	ROLL DOWN CURB END TRANSITION SLOPING 1:2.
(20)	(NOT USED).
(21)	CURB OPENING, REFER TO SITE GRADING PLAN FOR ADDITIONAL REQUIREMENTS.

CAUTION:
INFORMATION ON THIS DRAWING CONCERNING TYPE AND LOCATION OF UNDERGROUND AND OTHER UTILITIES IS NOT GUARANTEED TO BE ACCURATE OR ALL INCLUSIVE. THE CONTRACTOR IS RESPONSIBLE FOR MAKING HIS OWN DETERMINATION AS TO THE TYPE AND LOCATION OF UNDERGROUND AND OTHER UTILITIES AS MAY BE NECESSARY TO AVOID DAMAGE THERETO.



Know what's below
Call before you dig.



O'Reilly AUTO PARTS
CORPORATE OFFICES
233 SOUTH PATTERSON
SPRINGFIELD, MISSOURI 65802
(417) 862-2674 TELEPHONE

PROJECT:
NEW O'REILLY AUTO PARTS STORE
915 AZALEA DRIVE
WAYNESBORO, MISSISSIPPI
SITE DEVELOPMENT PLAN

Buddy Webb, NCARB, AIA
Architect - Consultant
3057 EAST CAIRO
SPRINGFIELD, MISSOURI 65802
(417) 877-1385 TELEPHONE
(417) 877-9736 FAX

DRAWN BY: JF
CHECKED BY: LG
DATE: 01/12/18
REVISION:
PROJECT NUMBER: WSB
SHEET NUMBER:

C2.1

REPRODUCTION PROHIBITED WITHOUT THE EXPRESSED WRITTEN CONSENT OF THE DESIGN PROFESSIONAL. COPYRIGHT 2018 - DESIGNS, DRAWINGS AND SPECIFICATIONS ARE INSTRUMENTS OF SERVICE AND ARE THE PROPERTY OF THE DESIGN PROFESSIONAL.