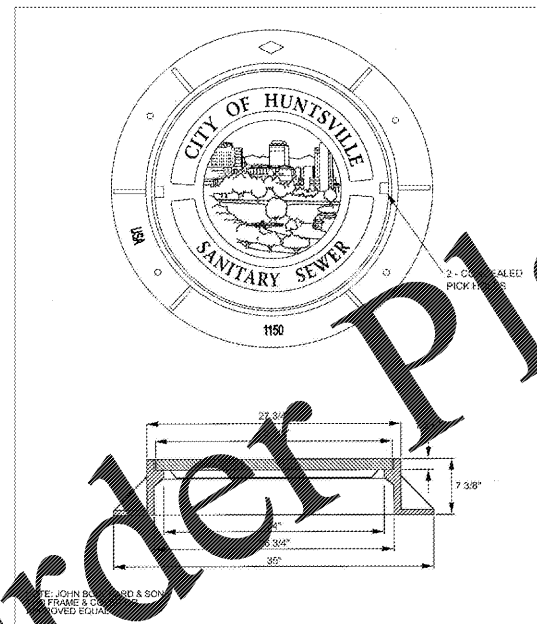
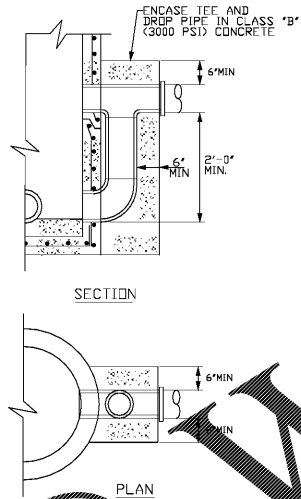


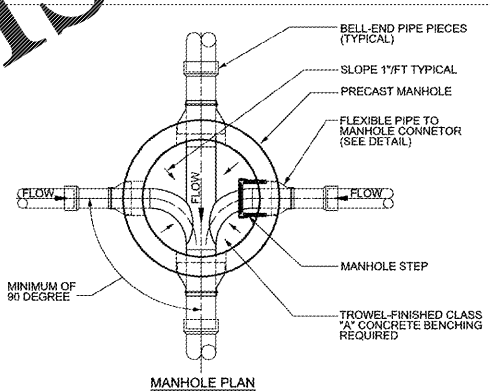
STANDARD SANITARY SEWER MANHOLE DETAIL



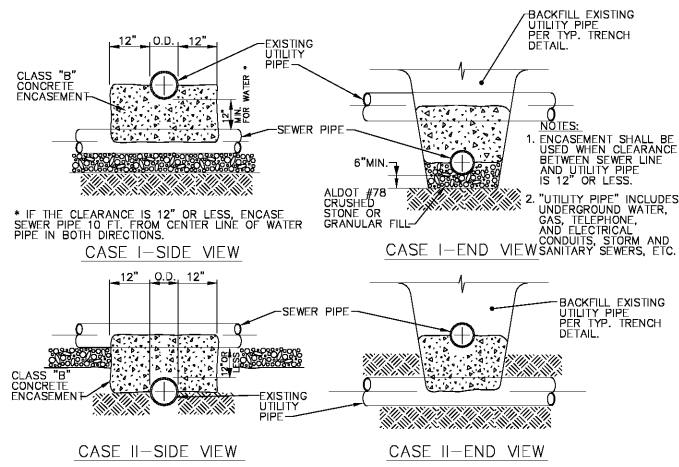
SANITARY SEWER MANHOLE FRAME AND COVER



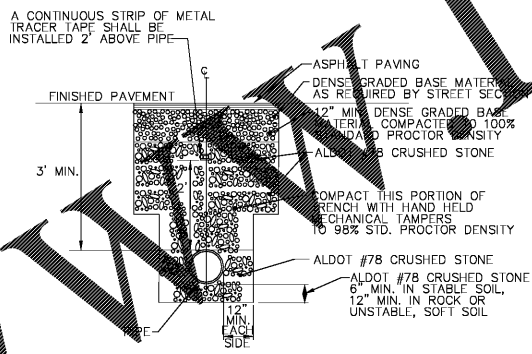
SANITARY SEWER MANHOLE DROP CONNECTION DETAIL



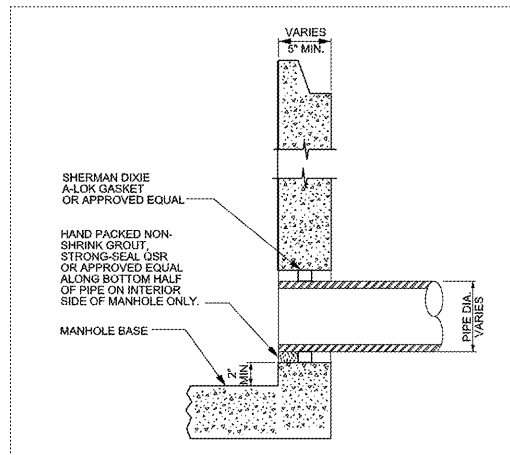
MANHOLE INVERT DETAIL



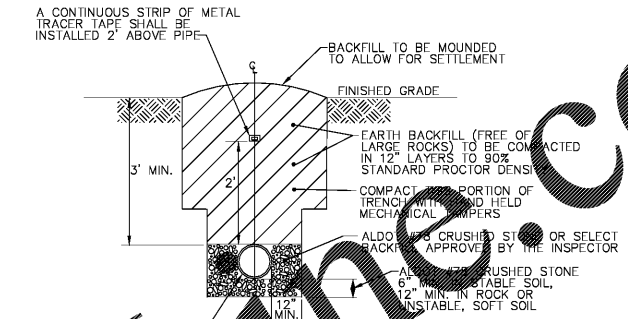
UTILITY CROSSING DETAILS



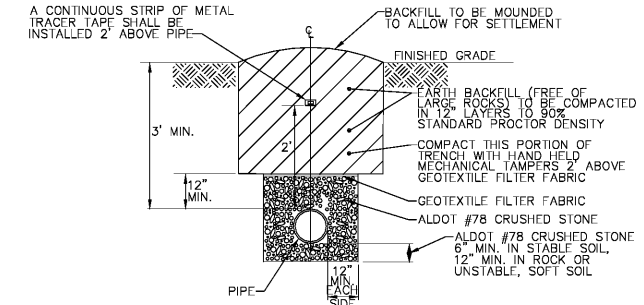
TYPICAL TRENCH DETAIL FOR DUCTILE IRON OR REINFORCED CONCRETE SANITARY SEWER PIPE IN TRAFFIC AREA OR WITHIN STREET R.O.W. AND ALLEYS



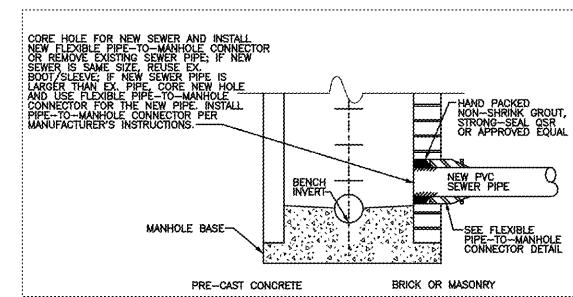
FLEXIBLE PIPE-TO-MANHOLE CONNECTOR DETAIL



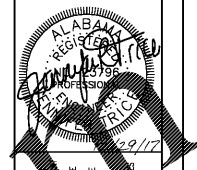
TYPICAL TRENCH DETAIL FOR DUCTILE IRON OR REINFORCED CONCRETE SANITARY SEWER PIPE IN NON-TRAFFIC AREA



TYPICAL TRENCH DETAIL FOR PVC & FLEXIBLE SANITARY SEWER PIPE IN NON-TRAFFIC AREAS



CONNECTION OF NEW SEWER TO EXISTING MANHOLE



TRICE, P.C.
CONSULTING ENGINEERS
1100 UNIVERSITY BLVD., SUITE 200
HUNTSVILLE, ALABAMA 35894
(256) 265-1100

**LEGACY AT JONES FARM
PHASE 2**

CLIENT
RBJ BAILEY, LLC
PO BOX 2545
HUNTSVILLE, AL 35804

SITE ADDRESS
1 LEGACY FARM DR SE
HUNTSVILLE, AL 35802

REVISIONS

SHEET TITLE
**CONSTRUCTION
DETAILS**

SCALE: NIS
APPROVED BY: JRI
PROJECT NO.: 17-105
DATE: 12/29/17
SHEET NUMBER
C6.5 OF C6.6