

PRICE, P.C.
CONSULTING ENGINEERS
1000 W. UNIVERSITY BLVD., SUITE 100
HUNTSVILLE, AL 35893
TEL: 256-833-1111

**LEGACY AT JONES FARM
PHASE 2**

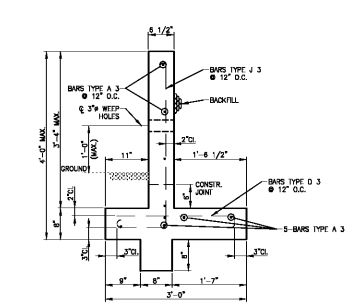
CLIENT
RBJ BAILEY, LLC
PO BOX 2545
HUNTSVILLE, AL 35804

SITE ADDRESS
1 LEGACY FARM DR SE
HUNTSVILLE, AL 35802

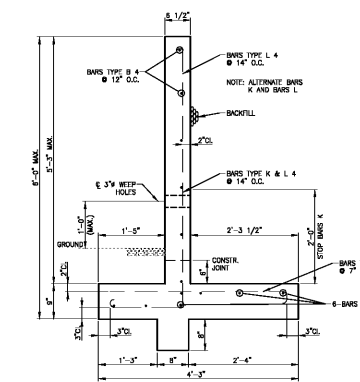
REVISIONS

SHEET TITLE
CONSTRUCTION DETAILS

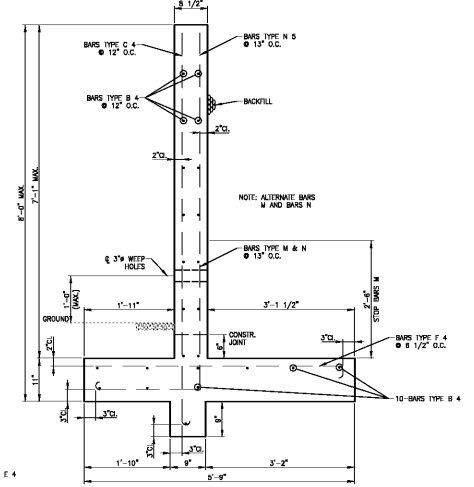
SCALE: NIS
APPROVED BY: JRT
PROJECT NO.: 17-105
DATE: 12/29/17
SHEET NUMBER
C6.4 OF C6.6



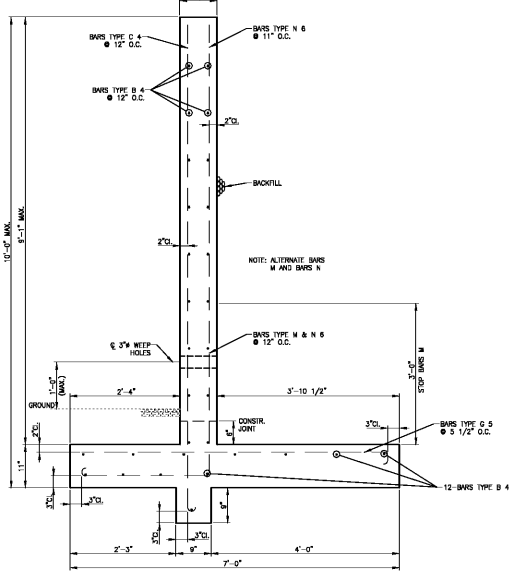
0' TO 4'-0" RETAINING WALL
NOT TO SCALE



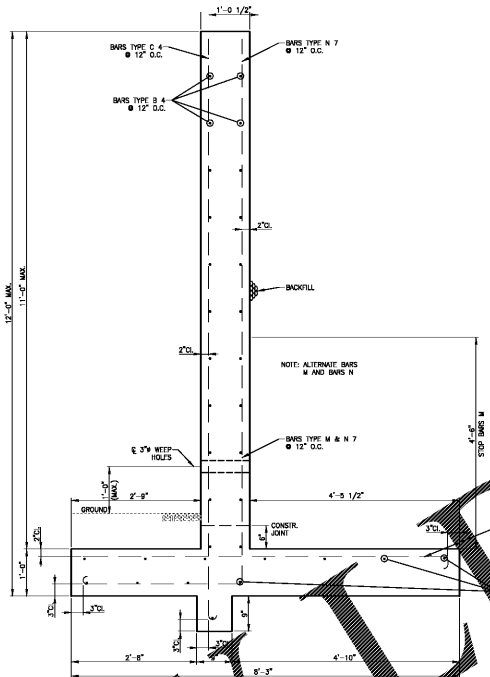
4'-0" TO 6'-0" RETAINING WALL
NOT TO SCALE



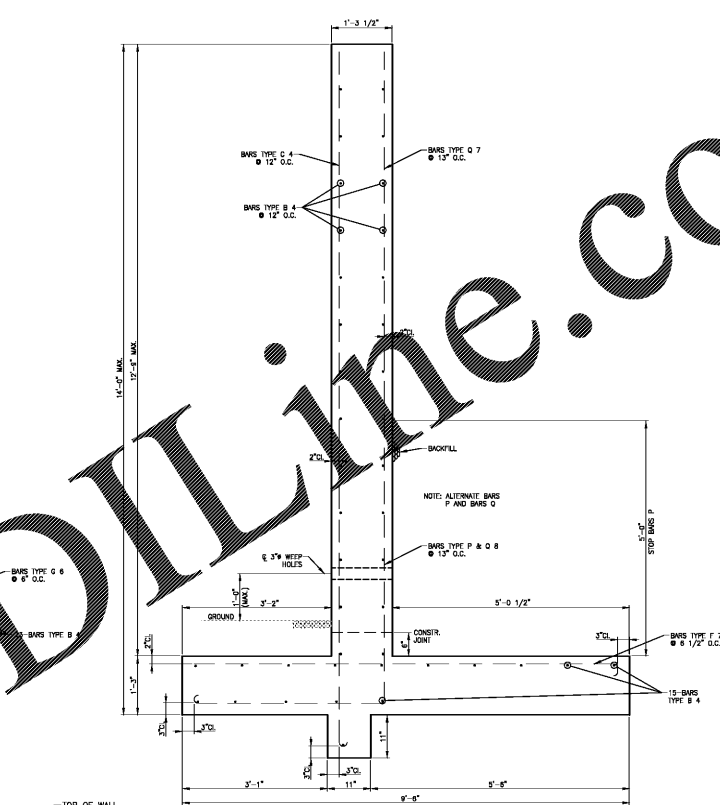
6'-0" TO 8'-0" RETAINING WALL
NOT TO SCALE



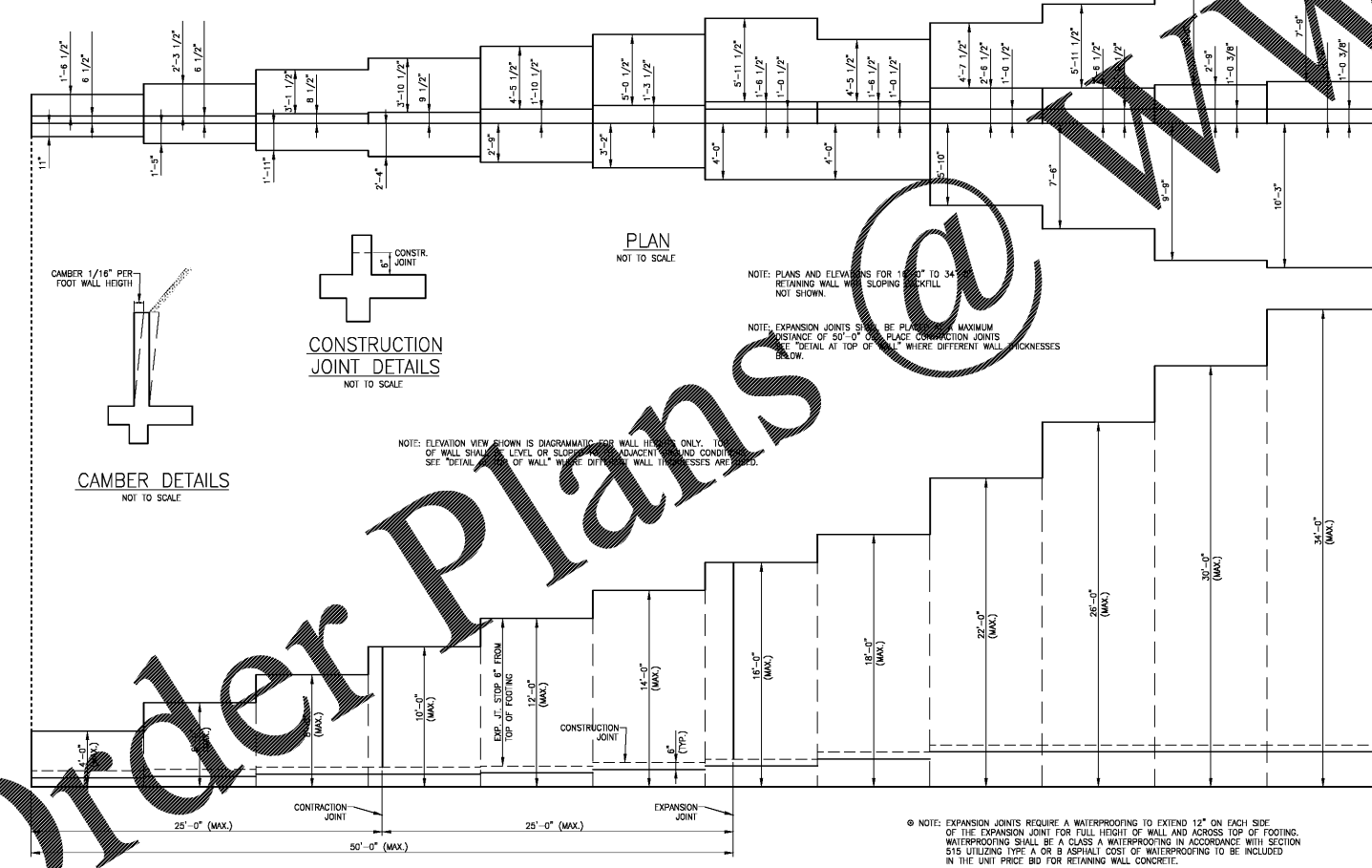
8'-0" TO 10'-0" RETAINING WALL
NOT TO SCALE



10'-0" TO 12'-0" RETAINING WALL
NOT TO SCALE



12'-0" TO 14'-0" RETAINING WALL
NOT TO SCALE

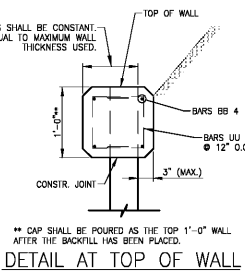


ELEVATION
NOT TO SCALE

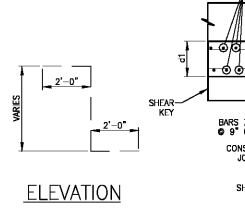
NOTE: QUANTITIES ARE BASED ON MAXIMUM WALL HEIGHT FROM EACH WALL.

WALL HEIGHT	CU. YDS. CONC. (PER L.F. OF WALL)	LBS. STEEL REINF. (PER L.F. OF WALL)
0' TO 4'	0.16	8.4
4' TO 6'	0.23	19.8
6' TO 8'	0.40	44.7
8' TO 10'	0.53	75.2
10' TO 12'	0.75	108.8
12' TO 14'	1.08	147.2
14' TO 16'	1.37	185.1
16' TO 18'	1.38	156.8
18' TO 22'	2.09	251.2
18' TO 22'	2.60	197.6
18' TO 22'	2.92	310.8
22' TO 25'	3.14	344.8
22' TO 25'	3.51	556.7
25' TO 30'	3.88	488.6
25' TO 30'	4.06	528.1
30' TO 34'	4.44	630.1
30' TO 34'	5.15	820.0

GENERAL NOTES
SPECIFICATIONS: ALABAMA STATE HIGHWAY DEPARTMENT, 1992 EDITION.
CONCRETE: SHALL BE RETAINING WALL CONCRETE.
WEEP HOLES: THREE INCH ROUND WEEP HOLES SPACED NOT OVER TEN FEET ON CENTERS SHALL BE PLACED AT ELEVATIONS AS SHOWN ON RETAINING WALL SECTIONS WITH BACKFILL AS PER SUBMITTAL 214-62 (6).
CONSTRUCTION JOINTS: ALL CONSTRUCTION JOINTS SHALL BE CAREFULLY MADE, WELL BONDED AND WATERPROOF.
STEEL REINFORCEMENT: ALL REINFORCEMENT SHALL BE IN ACCORDANCE WITH SECTION 830.
WALL CAP: THE TOP OF WALLS SHALL BE PROVIDED WITH A CAP AS DETAILED BELOW UNLESS OTHERWISE NOTED BY PLAN DETAILS.

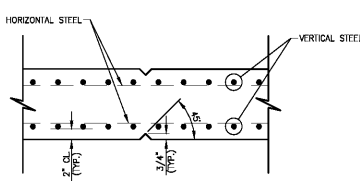


DETAIL AT TOP OF WALL

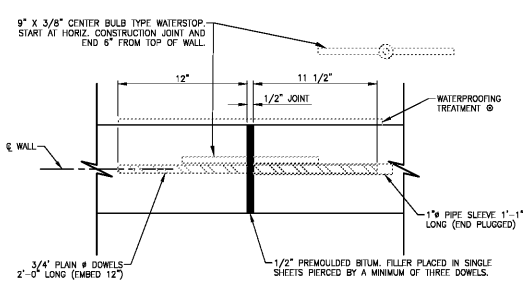


ELEVATION

SECTION TO ADAPT STEPPED FOOTING



SECTION



EXPANSION JOINT DETAIL

NOTE: EXPANSION JOINTS REQUIRE A WATERPROOFING TO EXTEND 12" ON EACH SIDE OF THE EXPANSION JOINT FOR FULL HEIGHT OF WALL AND ACROSS TOP OF FOOTING. WATERPROOFING SHALL BE A GLASS A WATERPROOFING IN ACCORDANCE WITH SECTION 515 UTILIZING TYPE A OR B ASPHALTIC COST OF WATERPROOFING TO BE INCLUDED IN THE UNIT PRICE BID FOR RETAINING WALL CONCRETE.

Order Plans @ WWW.ASPLINE.COM