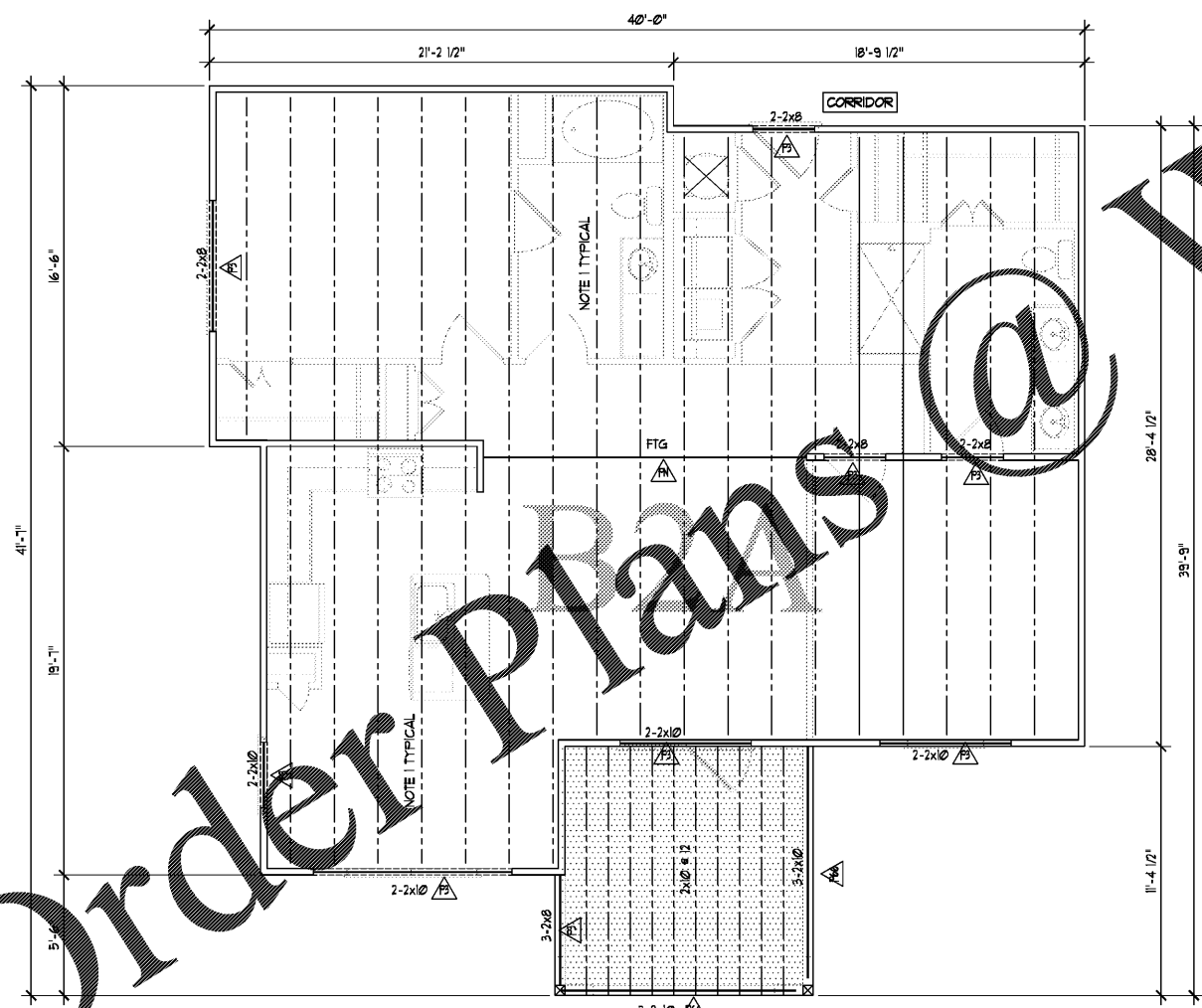
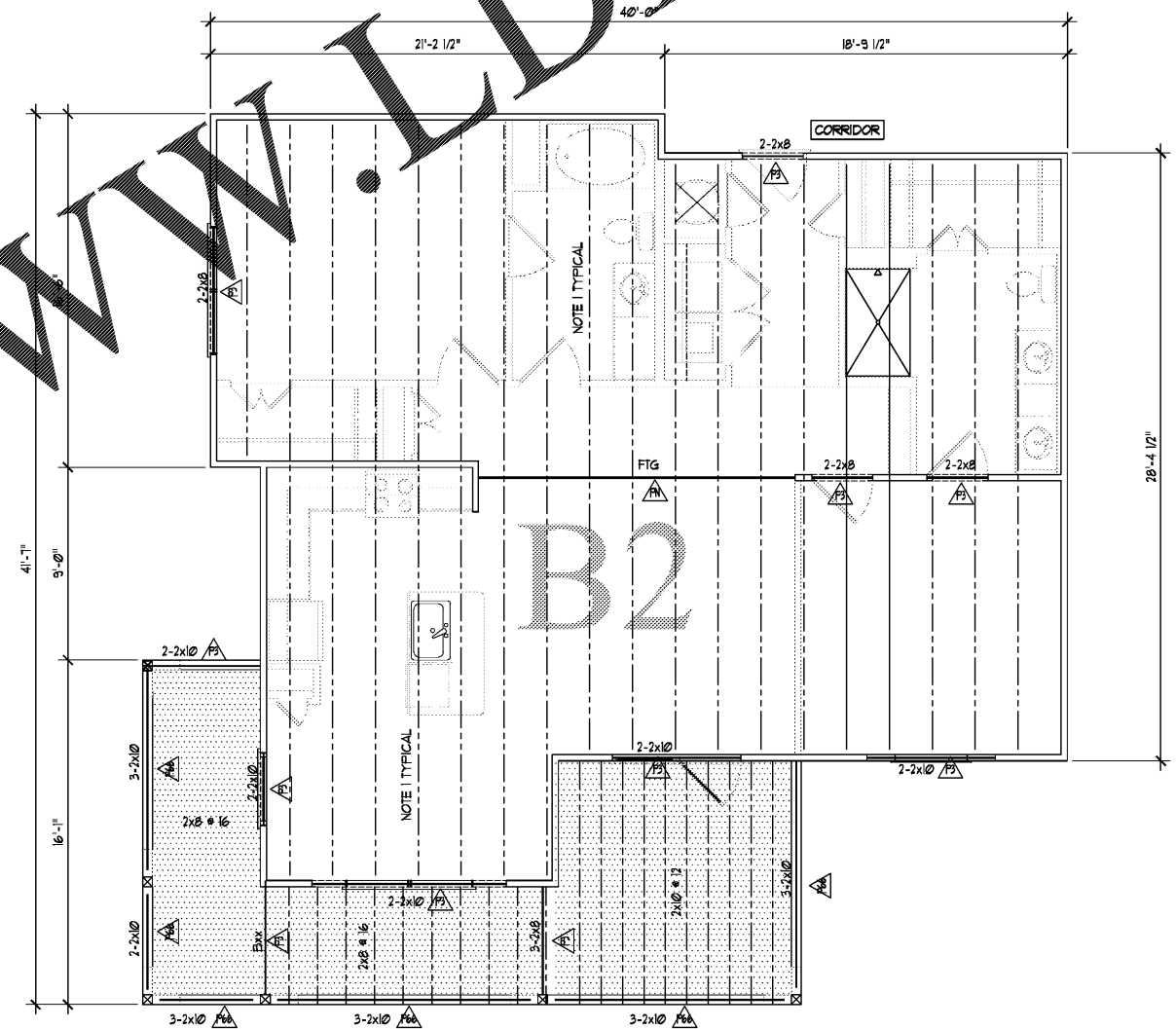


1 UNIT B1 FRAMING PLAN
S15.1 SCALE: 1/4" = 1'-0"

- FRAMING PLAN NOTES**
1. FRAMED FLOOR ASSEMBLY SHALL BE 1'-1 1/2" TOTAL THICKNESS W/ 3/4" GYPCRETE CEMENTITIOUS TOPPING OVER SOUND ISOLATION MAT OVER 3/4" TONGUE AND GROOVE OSB OR PLYWOOD FLOOR DECKING OVER 18" DEEP PRE-ENGINEERED PLATE CONNECTED WOOD TRUSSES.
 2. SEE ARCHITECTURAL DRAWINGS FOR GENERAL FRAMED FLOOR LAYOUTS, SLOPES, DIMENSIONS, AND SECTIONS NOT SHOWN.
 3. FOR GENERAL NOTES AND DESIGNATIVE LOADS SEE SHEETS S01 AND S02.
 4. SEE SHEET S13 FOR LOAD BEARING WALL SCHEDULE AND S14 FOR SHEET S13 FOR FOOTING'S SCHEDULE AND FOOT NOTES.
 5. DENOTES POST MARK.
 6. SEE NOTES SHEAR WALL MARK SEE SHEET S13 FOR SHEAR WALL SCHEDULE AND RELATED NOTES.
 7. PROVIDE BEAMS NOTED AT ROOF LEVEL FRAMING UNLESS NOTED.

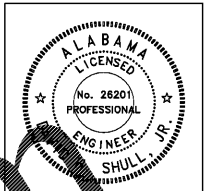


2 UNIT B2A FRAMING PLAN
S15.1 SCALE: 1/4" = 1'-0"



3 UNIT B2 FRAMING PLAN
S15.1 SCALE: 1/4" = 1'-0"

DAVID H. SHULL, JR., P.E.
ALABAMA REGISTRATION #: PE 26201
IN ASSOCIATION WITH
SHULL & ASSOCIATES, INC.
ALABAMA CERTIFICATE OF AUTHORIZATION CA 3177 E
127 CHURCH STREET NE SUITE 100 MARIETTA, GA 30060
(404) 459-0585



PUCCIANO & ENGLISH, INC.
ARCHITECTS, AIA
3084 MERCER UNIVERSITY DRIVE, SUITE 110
ATLANTA, GA 30341
PH: 770-457-0823 FAX: 770-451-0092
denglish@pucciano-english.com



JOB No: 1701
DRAWN BY:
CHECK BY:
JOB PROGRESS:
ITEM DATE
PRICING SET 07-14-2017
PERMIT SET 02-26-2018

REVISIONS:
DATE NO

This drawing, as an instrument of service, is and shall remain the property of the Architect and shall not be reproduced, published or used in any way without the permission of the Architect.

Legacy at Jones Farm Phase 2
HUNTSVILLE, ALABAMA
AN APARTMENT COMMUNITY FOR
RBJ BAILEY, LLC

UNIT FRAMING PLANS

SHEET NO.

S15.1