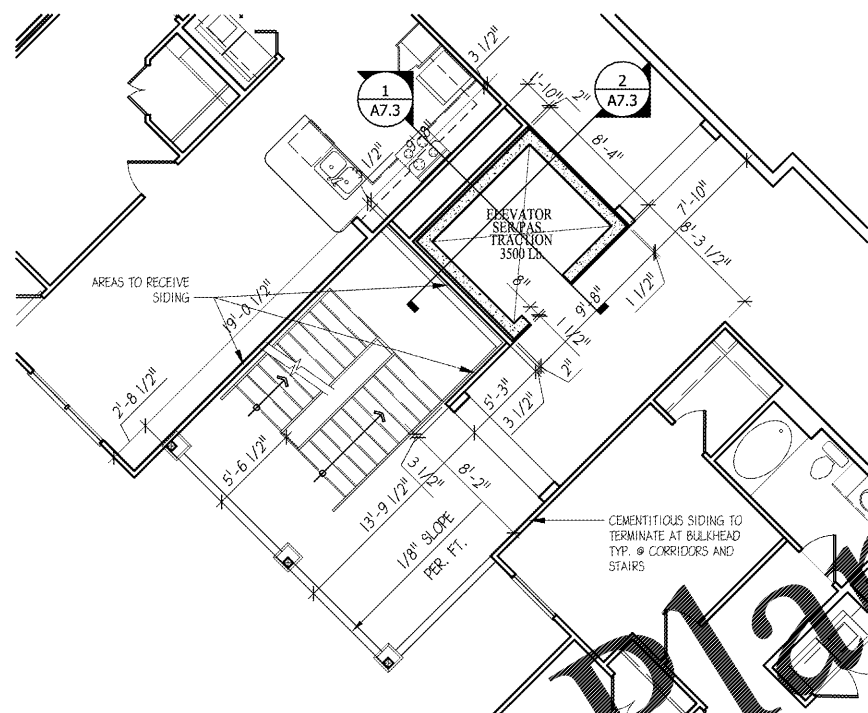
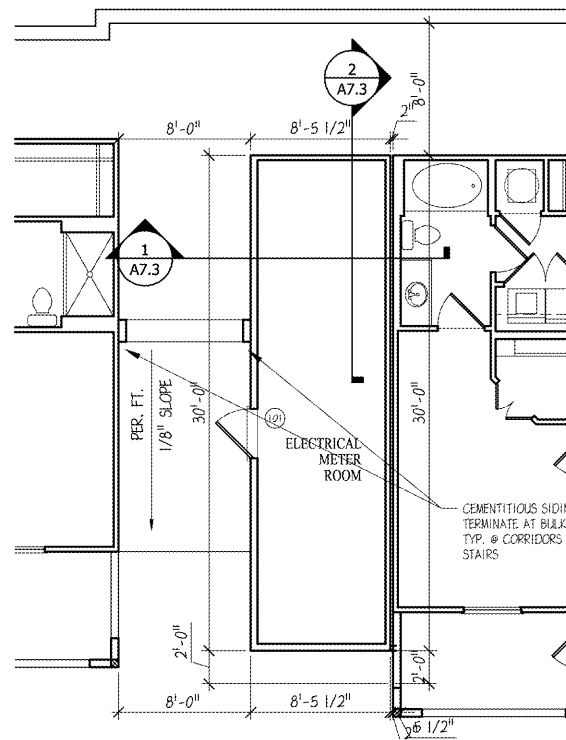


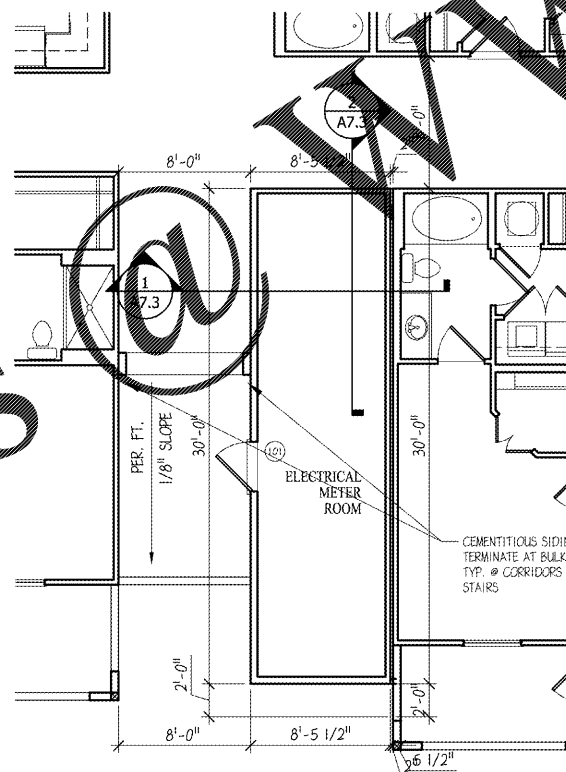
**1 ELEVATOR #1000 - TERRACE**  
**A7.0** SCALE: 3/16" = 1'-0"



**2 ELEVATOR #1000 - UPPER LEVELS**  
**A7.0** SCALE: 3/16" = 1'-0"



**3 ELECTRICAL ROOM - GROUND**  
**A7.0** SCALE: 3/16" = 1'-0"



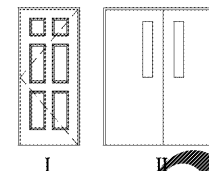
**4 ELECTRICAL ROOM - UPPER LEVELS**  
**A7.0** SCALE: 3/16" = 1'-0"

DOOR SCHEDULE										
NO.	SIZE	HEIGHT	THICKNESS	MAKE	MATERIAL	FRAME	HARDWARE	FIRE RATING	NOTES	TYPE
101	3'-0"	6'-8"	1 3/4"	6 PANEL ENTRY	INSUL. METAL CLAD	WOOD	LOCK SET	20 MIN.	4, 5, 6	I
102	3'-0" PAIR	6'-8"	1 3/4"	FLUSH	INSUL. METAL CLAD	METAL		1 1/2 HR	1, 3, 7	II

**NOTES:**

- TEMPERED GLASS
- INSULATED LOW 'E' GLASS.
- 1-1/2 HR FIRE DOORS WITH ELECTRONIC HOLD OPEN DEVICE TO RELEASE DOOR WHEN FIRE ALARM IS OPERATING
- SPRING HINGES (U.L. APPROVED)
- H/C ACCESSIBLE THRESHOLDS TO BE INSTALLED
- H/C ACCESSIBLE LEVERED HARDWARE TO BE INSTALLED AT H/C ACCESSIBLE/ADAPTABLE UNITS
- 4" WIDE X 30" FIRE RATED VISION PANEL

**DOOR TYPES**



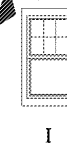
**WINDOW SCHEDULE**

TYPE	SIZE	MAKE	TYPE	NOTES
AA	3'-0" x 5'-0" FIXED	VINYL SINGLE HUNG		SEE UNIT PLANS FOR FACTOR AND SHGC REQUIREMENTS FOR ALL DOORS AND WINDOWS

**NOTES:**

- INSULATED LOW 'E' GLASS.
- TEMPERED GLASS ON FLOOR PLANS (NOTED W/ FOR LOCATIONS OF WINDOWS W/TEMPERED GLASS.
- WINDOWS SHALL BE 20" F.F. MIN.

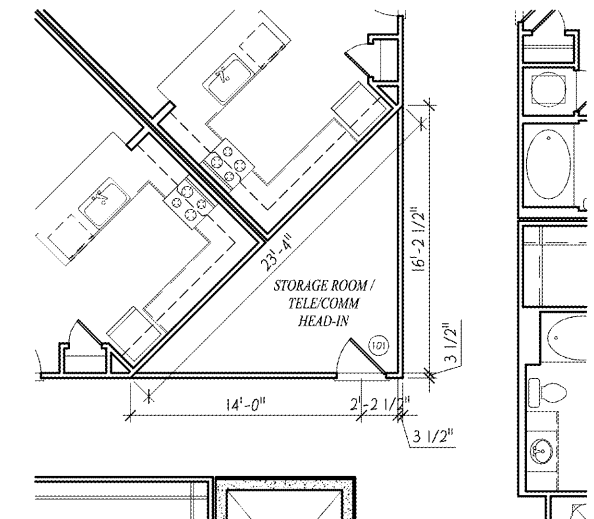
**WINDOW TYPES**



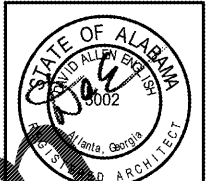
**TRACTION PASSENGER ELEVATOR**

SCHINDLER ELEVATOR CORP. - MODEL 3300 - TRACTION ELEVATOR. OTHER ACCEPTABLE MANUF. OTIS AND DOVER

APPLICATION	TRACTION PASSENGER/SERVICE
SERVICE	TRACTION PASSENGER/SERVICE
QUANTITY	1 PER BLDG.
CAPACITY	3500 LBS
SPEED	100FPM
TRAVEL	82 FT. MAX
LANDINGS	5
FRONT OPENING	5
REAR OPENING	0
OPERATION	MICROPROCESSOR SINGLE CAR
MACHINE ROOM	N.A.
PLATFORM SIZE	6'-9"x5'-7"
DOOR TYPE	TWO SPEED SIDE OPENING
CAB HEIGHT	7'-0"
GUIDE RAILS	EQ. TO 16 LB PER FOOT
HOISTWAY ENTRANCE	3'-6"x7'-0"
POWER SUPPLY	208 V 3 PHASE 60 HZ



**5 STORAGE ROOM - ALL LEVELS**  
**A7.0** SCALE: 3/16" = 1'-0" TYP. ALL ROOMS - ORIENTATIONS MAY VARY



**PUCCIANO & ENGLISH, INC.**  
**ARCHITECTS, AIA**  
 3084 MERCER UNIVERSITY DRIVE, SUITE 110  
 ATLANTA, GA 30334  
 PH 770-457-4823; FAX 770-451-4082  
 english@pucciano-english.com



JOB No: 1701  
 DRAWN BY:  
 CHECK BY:  
 JOB PROGRESS:  
 ITEM DATE  
 PRICING SET 07-14-2017  
 PERMIT SET 02-26-2018

REVISIONS:  
 DATE NO.

This drawing, as an instrument of service, is and shall remain the property of the Architect and shall not be reproduced, published or used in any way without the permission of the Architect.

**Legacy at Jones Farm Phase 2**  
 HUNTSVILLE, ALABAMA  
 AN APARTMENT COMMUNITY FOR  
**RBJ BAILEY, LLC**

ELEVATOR PLANS

SHEET NO.

**A7.0**

Order Plans