



PUCCIANO & ENGLISH, INC.
ARCHITECTS, AIA
 3084 MERCER UNIVERSITY DRIVE, SUITE 110
 ATLANTA, GA 30341
 PH 770-457-0823, FAX 770-451-0092
 pucciano-english@bellsouth.net



JOB No: 1521
 DRAWN BY:
 CHECK BY:
 JOB PROGRESS:

ITEM	DATE
HLD REVIEW SET	6-3-2016
HLD COMMENTS	7-14-2016

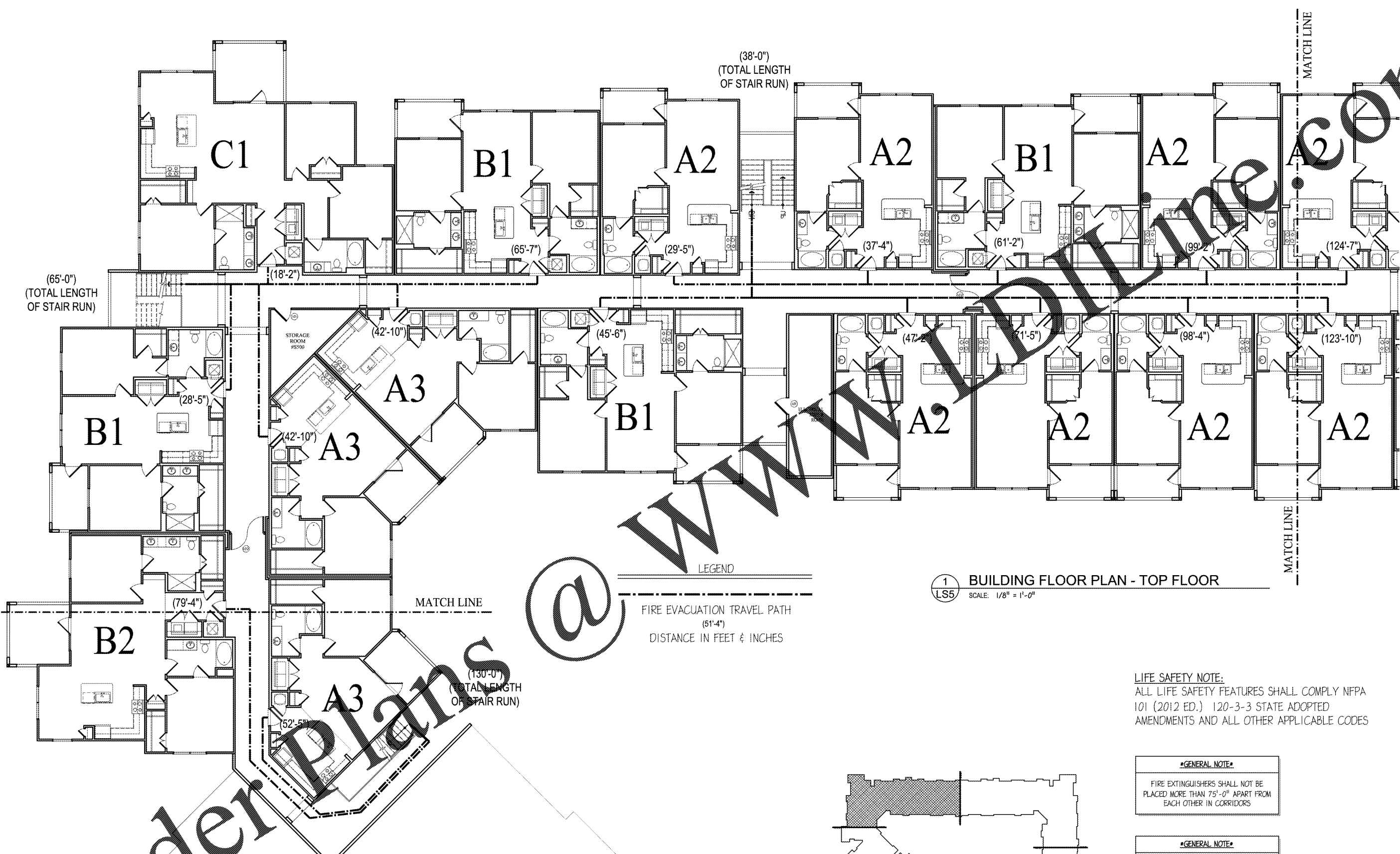
REVISIONS:
 DATE NO.

This drawing, as an instrument of service, is and shall remain the property of the Architects and shall not be reproduced, published or used in any way without the permission of the Architect.

RIVERPOINT APARTMENTS
 HUD ID NUMBER = 061-35642
 AN APARTMENT COMMUNITY FOR
ROME RIVERVIEW PARTNERS, LLC
 ROME, GEORGIA

LIFE SAFETY PLANS
 TOP FLOOR EVAC. ROUTE
 SHEET NO.

LS-5



LEGEND
 FIRE EVACUATION TRAVEL PATH
 (61'-4")
 DISTANCE IN FEET & INCHES

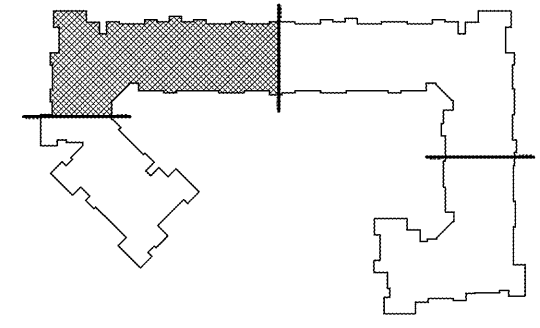
1 BUILDING FLOOR PLAN - TOP FLOOR
 SCALE: 1/8" = 1'-0"

LIFE SAFETY NOTE:
 ALL LIFE SAFETY FEATURES SHALL COMPLY NFPA 101 (2012 ED.) 120-3-3 STATE ADOPTED AMENDMENTS AND ALL OTHER APPLICABLE CODES

GENERAL NOTE
 FIRE EXTINGUISHERS SHALL NOT BE PLACED MORE THAN 75'-0" APART FROM EACH OTHER IN CORRIDORS

GENERAL NOTE
 ALL UNITS MUST BE CONSTRUCTED PER THE FAIR HOUSING ACT

GENERAL NOTE
 REFER TO ELECTRICAL SHEETS FOR LIGHTING EQUIPMENT LOCATIONS



2 LOCATION MAP
 SCALE: N.T.S.

Order Plans