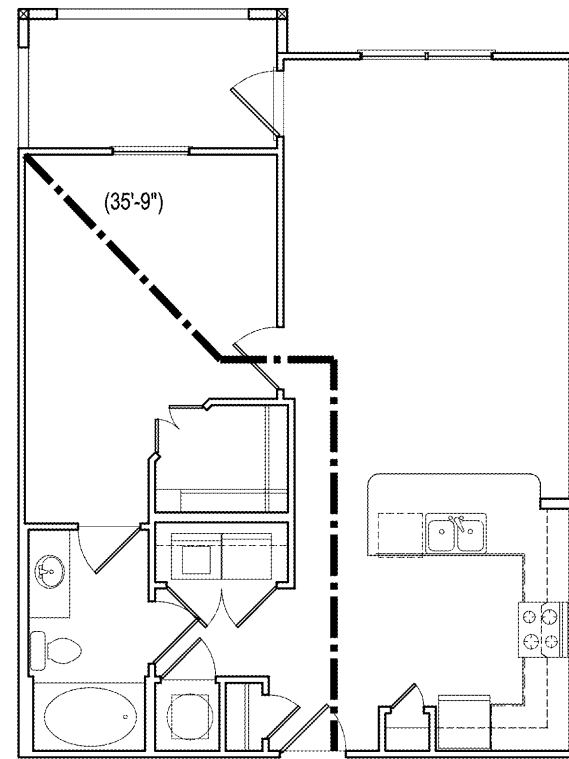
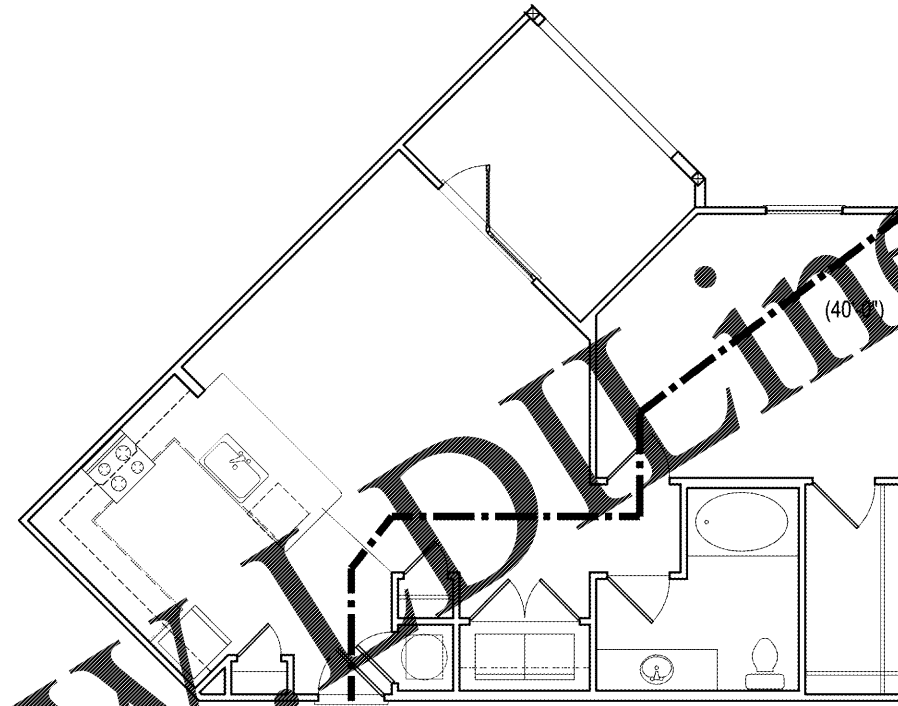


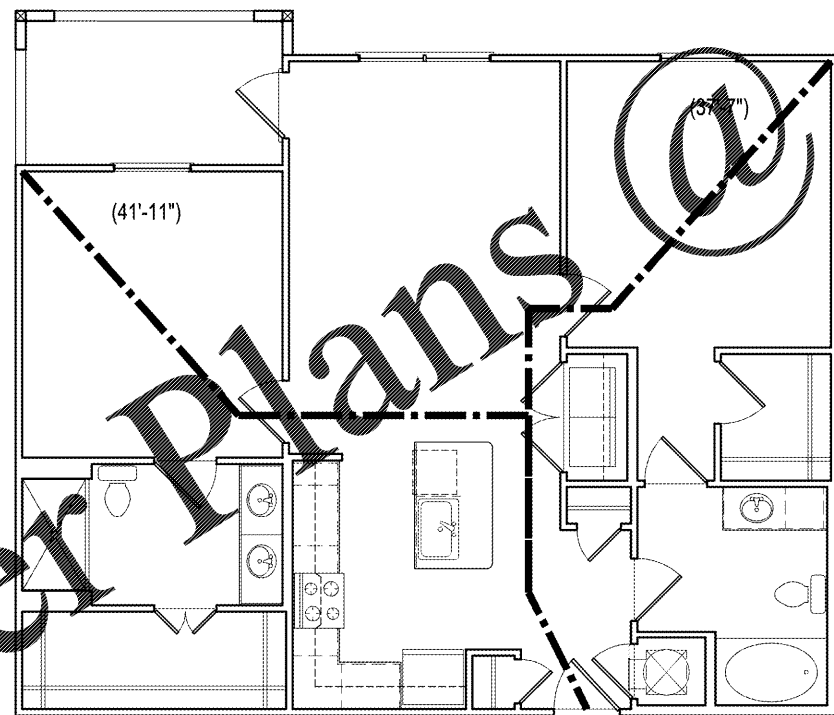
1 UNIT A1 - FLOOR PLAN
LS1 SCALE: 1/4" = 1'-0"



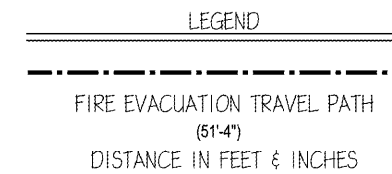
2 UNIT A2 - FLOOR PLAN
LS1 SCALE: 1/4" = 1'-0"



3 UNIT A3 - FLOOR PLAN
LS1 SCALE: 1/4" = 1'-0"



4 UNIT B1 - FLOOR PLAN
LS1 SCALE: 1/4" = 1'-0"



GENERAL NOTE
FIRE EXTINGUISHERS SHALL NOT BE PLACED MORE THAN 75'-0" APART FROM EACH OTHER IN CORRIDORS

GENERAL NOTE
ALL UNITS MUST BE CONSTRUCTED PER THE FAIR HOUSING ACT

GENERAL NOTE
REFER TO ELECTRICAL SHEETS FOR LIGHTING EQUIPMENT LOCATIONS

LIFE SAFETY NOTE:
ALL LIFE SAFETY FEATURES SHALL COMPLY NFPA 101 (2012 ED.) 120-3-3 STATE ADOPTED AMENDMENTS AND ALL OTHER APPLICABLE CODES



PUCCIANO & ENGLISH, INC.
ARCHITECTS, AIA
3884 MERCER UNIVERSITY DRIVE, SUITE 110
ATLANTA, GA 30334
PH 770-457-4823, FAX 770-451-0892
pucciano-english@bellsouth.net



JOB No: 1521
DRAWN BY:
CHECK BY:
JOB PROGRESS:
ITEM DATE
HUD REVIEW SET 6-3-2016
HUD COMMENTS 7-14-2016

REVISIONS:
DATE NO.

This drawing, as an instrument of service, is and shall remain the property of the Architects and shall not be reproduced, published or used in any way without the permission of the Architect.

RIVERPOINT APARTMENTS
HUD ID NUMBER = 061-35842
AN APARTMENT COMMUNITY FOR
ROME RIVERVIEW PARTNERS, LLC
ROME, GEORGIA

UNIT PLANS
LIFE SAFETY
SHEET NO.

LS-1

Order Plans @ www.dline.com