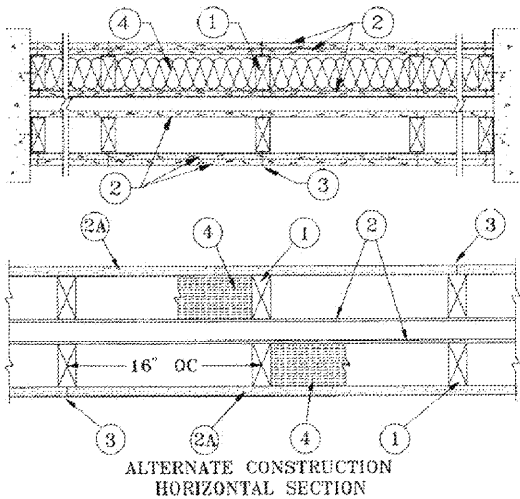


TYPICAL 2 HOUR RATED PARTY WALL ASSEMBLY

DESIGN NO. U342
 DECEMBER 15, 2011
 BEARING WALL RATING --- 2 HR.
 FINISH RATING --- MIN 59 MIN.
 LOAD RESTRICTED FOR CANADIAN APPLICATIONS --- SEE GUIDE BXUV7



1. WOOD STUDS --- NOM 2 BY 4 IN. CROSS BRACED AT MID-HEIGHT AND EFFECTIVELY FIRESTOPPED AT TOP AND BOTTOM OF WALL. SPACED A MAX OF 16 OR 24 IN. OC DEPENDING ON TYPE OF WALLBOARD. SEE ITEM 2 BELOW.
2. GYPSUM BOARD* --- 5/8 IN. THICK, 4 FT WIDE. APPLIED EITHER HORIZONTALLY OR VERTICALLY. INNER LAYERS NAILED TO STUDS AND BEARING PLATES 6 IN. O.C. WITH 6D CEMENT COATED NAILS, 1-7/8 IN. LONG, 0.0719 IN. SHANK DIAM AND 1/4 IN. DIAM HEAD. OUTER LAYER OF DOUBLE LAYERED SIDE NAILED TO STUDS AND BEARING PLATES 8 IN. O.C. WITH 6D CEMENT COATED NAILS, 2-3/8 IN. LONG, 0.113 IN. SHANK DIAM AND 9/32 IN. DIAM HEAD. VERTICAL JOINTS LOCATED OVER STUDS. AS AN ALTERNATE, NO. 6 BUGLE-HEAD DRYWALL SCREWS, 1-7/8 OR 2-3/8 IN. LONG FOR THE INNER AND OUTER LAYERS, RESPECTIVELY, MAY BE SUBSTITUTED FOR THE CEMENT COATED NAILS. ALL JOINTS IN OUTER LAYER OF DOUBLE LAYER SIDES STAGGERED WITH JOINTS IN INNER LAYER.

WHEN STEEL FRAMING MEMBERS* (ITEM 5) ARE USED, BASE LAYER ATTACHED TO FURRING CHANNELS WITH 1 IN. LONG TYPE S BUGLE-HEAD STEEL SCREWS SPACED MAX 24 IN. OC; FACE LAYER ATTACHED WITH 1-5/8 IN. LONG TYPE S BUGLE-HEAD STEEL SCREWS SPACED MAX 12 IN. OC.

WHEN USED IN WIDTHS OTHER THAN 48 IN., GYPSUM BOARD TO BE INSTALLED HORIZONTALLY.

NOTE: ONLY BOARD TYPES MARKED WITH * MAY BE USED IN ASSEMBLIES WITH 24 IN. OC SPACING OF STUDS.

- ACADIA DRYWALL SUPPLIES LTD --- TYPE X
- AMERICAN GYPSUM CO --- TYPES AGX-1, M-GLASS, AG-C+, AGX-11.
- BEIJING NEW BUILDING MATERIALS PUBLIC
- LTD CO --- TYPE DBX-1.
- CERTAINTEEED GYPSUM INC --- TYPES 1, FRPC+, EGRG, GLASROC, TYPE X OR TYPE C+.
- CERTAINTEEED GYPSUM CANADA INC --- TYPE C+, TYPE X OR TYPE ABUSE-RESISTANT.
- CGC INC --- TYPE C+, IP-X1, IP-X2+, IPC-AR+, SCX, SHX, ULX, WRC+, WRX.
- GEORGIA-PACIFIC GYPSUM L L C --- TYPES 5+, 6, 9, DAP, DD, DA, DAPC+, DGG, DS, C, GPFS6.
- LAFARGE NORTH AMERICA INC --- TYPES LGFC-C+, LGFC2, LGFC2A, LGFC6, LGFC6A, LGFC-C/A+, LGFC-ND.
- NATIONAL GYPSUM CO --- TYPE FSK, FSK-1, FSK-C+, FSW-5, FSW-6, FSW-C+, FSL OR FSW-G.
- PABCO BUILDING PRODUCTS L L C, DBA
- PABCO GYPSUM --- TYPE C+, PG-2, PG-3, PG-3W, PG-3WS, PG-4, PG-5W, PG-5WS, PG-6, PG-9, PG-11 OR PG-C.
- PANEL REY S A --- TYPES PRX, RHX, MDX, ETX OR PRC+.
- SIAM GYPSUM INDUSTRY (SARABURI) CO LTD --- TYPE EX-1.
- TEMPLE-INLAND --- TYPE TG-C+, TYPE X, VENEER PLASTER BASE-TYPE X, WATER RATED-TYPE X, SHEATHING TYPE-X, SOFFIT-TYPE X, GREENGLASS TYPE X+.
- UNITED STATES GYPSUM CO --- TYPE C+, FRX-G, IP-X1, IP-X2+, IPC-AR+, SCX, SHX, ULX, WRC+ OR WRX.
- USG MEXICO S A DE C V --- TYPES C+, IP-X1, IP-X2+, IPC-AR+, SCX, SHX, ULX, WRC+, WRX.

- USG MEXICO S A DE C V --- TYPES C+, IP-X1, IP-X2+, IPC-AR+, SCX, SHX, ULX, WRC+, WRX
- 2C. GYPSUM BOARD* --- (AS AN ALTERNATE TO ITEMS 2 THROUGH 2B) - 5/8 IN. THICK, 4 FT. WIDE, PAPER SURFACED APPLIED VERTICALLY AND SECURED AS DESCRIBED IN ITEM 2.
- TEMPLE-INLAND --- TYPE X COMFORTGUARD SOUND DEADENING GYPSUM BOARD.
- 2D. GYPSUM BOARD* --- (AS AN ALTERNATE TO ITEMS 2 THROUGH 2C) - NOT TO BE USED WITH ITEM 5. INSTALLED AS DESCRIBED IN ITEM 2. 5/8 IN. THICK, 4 FT. WIDE, PAPER SURFACED, APPLIED VERTICALLY ONLY.
- NATIONAL GYPSUM CO --- SOUNDBREAK XP TYPE X GYPSUM BOARD
- 2E. WALL AND PARTITION FACINGS AND ACCESSORIES* --- (AS AN ALTERNATE TO ITEMS 2 THROUGH 2D) --- NOMINAL 5/8 IN. THICK, 4 FT WIDE PANELS, APPLIED VERTICALLY AND SECURED AS DESCRIBED IN ITEM 2.
- SERIOUS ENERGY INC --- TYPES QUIETROCK ES, QUIETROCK 527.
- 2F. GYPSUM BOARD* --- (AS AN ALTERNATE TO ITEMS 2 THROUGH 2E) - NOT TO BE USED WITH ITEM 5. INSTALLED AS DESCRIBED IN ITEM 2. 5/8 IN. THICK, 4 FT. WIDE, PAPER SURFACED, APPLIED VERTICALLY ONLY.
- CERTAINTEEED GYPSUM INC --- TYPE SILENTFX
- 3. JOINTS AND NAILHEADS --- GYPSUM BOARD JOINTS OF OUTER LAYER COVERED WITH PAPER TAPE AND JOINT COMPOUND. NAIL HEADS OF OUTER LAYER COVERED WITH JOINT COMPOUND. AS AN ALTERNATE, NOM 3/32 IN. THICK GYPSUM VENEER PLASTER MAY BE APPLIED TO THE ENTIRE SURFACE OF CLASSIFIED VENEER BASEBOARD WITH JOINTS REINFORCED WITH PAPER TAPE.
- 4. BATTS AND BLANKETS* --- (OPTIONAL) --- 3-1/2 IN. MAX THICKNESS GLASS OR MINERAL FIBER BATT INSULATION.

SEE BATTS AND BLANKETS (BZZJZ) CATEGORY OF LIST OF CLASSIFIED COMPANIES.

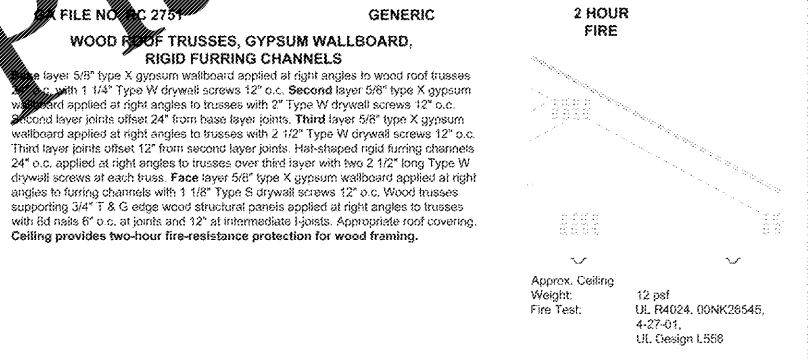
- 4A. FIBER, SPRAYED* --- AS AN ALTERNATE TO BATTS AND BLANKETS (ITEM 4) --- SPRAY APPLIED CELLULOSE MATERIAL. THE FIBER IS APPLIED WITH WATER TO COMPLETELY FILL THE ENCLOSED CAVITY IN ACCORDANCE WITH THE APPLICATION INSTRUCTIONS SUPPLIED WITH THE PRODUCT. NOMINAL DRY DENSITY OF 3.0 LB/FT³. ALTERNATE APPLICATION METHOD: THE FIBER IS APPLIED WITH U.S. GREENFIBER LLC TYPE A2100 HOT MELT ADHESIVE AT A NOMINAL RATIO OF ONE PART ADHESIVE TO 6.6 PARTS FIBER TO COMPLETELY FILL THE ENCLOSED CAVITY IN ACCORDANCE WITH THE APPLICATION INSTRUCTIONS SUPPLIED WITH THE PRODUCT. NOMINAL DRY DENSITY OF 2.5 LB/FT³.
- U S GREENFIBER L L C --- COCOON2 STABILIZED OR COCOON-FRM (FIRE RATED MATERIAL)
- 4B. FIBER, SPRAYED* --- AS AN ALTERNATE TO BATTS AND BLANKETS (ITEM 4) AND ITEM 4A - SPRAY APPLIED CELLULOSE INSULATION MATERIAL. THE FIBER IS APPLIED WITH WATER TO INTERIOR SURFACES IN ACCORDANCE WITH THE APPLICATION INSTRUCTIONS SUPPLIED WITH THE PRODUCT. APPLIED TO COMPLETELY FILL THE ENCLOSED CAVITY. MINIMUM DRY DENSITY OF 4.3 POUNDS PER CUBIC FT.
- NU-WOOL CO INC --- CELLULOSE INSULATION
- 4C. FIBER, SPRAYED* --- AS AN ALTERNATE TO BATTS AND BLANKETS (ITEM 4) - SPRAY APPLIED CELLULOSE FIBER. THE FIBER IS APPLIED WITH WATER TO COMPLETELY FILL THE ENCLOSED CAVITY IN ACCORDANCE WITH THE APPLICATION INSTRUCTIONS SUPPLIED WITH THE PRODUCT. THE MINIMUM DRY DENSITY SHALL BE 4.30 LBS/FT³.
- INTERNATIONAL CELLULOSE CORP --- CELBAR-RL

- 5. STEEL FRAMING MEMBERS (OPTIONAL, NOT SHOWN) --- FURRING CHANNELS AND RESILIENT SOUND ISOLATION CLIP AS DESCRIBED BELOW:
 - A. FURRING CHANNELS --- FORMED OF NO. 25 MSG GALV STEEL, 2-3/8 IN. WIDE BY 7/8 IN. DEEP, SPACED 24 IN. OC PERPENDICULAR TO STUDS. CHANNELS SECURED TO STUDS AS DESCRIBED IN ITEM B. ENDS OF ADJOINING CHANNELS ARE OVERLAPPED 6 IN. AND TIED TOGETHER WITH DOUBLE STRAND OF NO. 18 MSG GALV STEEL WIRE NEAR EACH END OF OVERLAP. AS AN ALTERNATE, ENDS OF ADJOINING CHANNELS MAY BE OVERLAPPED 6 IN. AND SECURED TOGETHER WITH TWO SELF-TAPPING #6 FRAMING SCREWS, MIN. 7/16 IN. LONG AT THE MIDPOINT OF THE OVERLAP, WITH ONE SCREW ON EACH FLANGE OF THE CHANNEL. WALLBOARD ATTACHED TO FURRING CHANNELS AS DESCRIBED IN ITEM 2.
 - B. STEEL FRAMING MEMBERS* --- USED TO ATTACH FURRING CHANNELS (ITEM A) TO STUDS (ITEM 1). CLIPS SPACED 48 IN. OC., AND SECURED TO STUDS WITH NO. 8 X 2-1/2 IN. COARSE DRYWALL SCREW THROUGH THE CENTER GROMMET. FURRING CHANNELS ARE FRICTION FITTED INTO CLIPS.

- FAC INTERNATIONAL INC --- TYPE RSIC-1.
- 6. WALL AND PARTITION FACINGS AND ACCESSORIES* --- (OPTIONAL, NOT SHOWN) --- NOMINAL 1/2 IN. THICK, 4 FT WIDE PANELS, FOR OPTIONAL USE AS AN ADDITIONAL LAYER ON ONE OR BOTH SIDES OF THE ASSEMBLY. PANELS ATTACHED IN ACCORDANCE WITH MANUFACTURER'S RECOMMENDATIONS. WHEN THE QR-510 PANEL IS INSTALLED BETWEEN THE WOOD FRAMING AND THE UL CLASSIFIED GYPSUM BOARD, THE REQUIRED UL CLASSIFIED GYPSUM BOARD LAYER(S) IS/ARE TO BE INSTALLED AS INDICATED AS TO FASTENER TYPE AND SPACING, EXCEPT THAT THE REQUIRED FASTENER LENGTH SHALL BE INCREASED BY A MINIMUM OF 1/2 IN. NOT EVALUATED OR MARKED AS A SUBSTITUTE FOR THE REQUIRED LAYER(S) OF UL CLASSIFIED GYPSUM BOARD.
- SERIOUS ENERGY INC --- TYPE QUIETROCK QR-510.

*BEARING THE UL CLASSIFICATION MARK

ROOF-CEILING SYSTEMS



- 2A. GYPSUM BOARD* --- 3/4 IN. THICK, 4 FT WIDE. APPLIED VERTICALLY TO STUDS (SPACED MAX 16 IN. OC) AND BEARING PLATES 6 IN. OC WITH 6D CEMENT COATED NAILS, 2-3/8 IN. LONG, 0.113 IN. SHANK DIAM AND 9/32 IN. DIAM HEADS OR 2-3/8 IN. LONG NO. 6 BUGLE HEAD DRYWALL SCREWS. WHEN THIS SINGLE LAYER SYSTEM IS USED FINISHED RATING IS REDUCED TO 26 MIN
- CGC INC --- TYPE ULTRACODE
- UNITED STATES GYPSUM CO --- TYPE ULTRACODE
- USG MEXICO S A DE C V --- TYPE ULTRACODE
- 2B. GYPSUM BOARD* --- AS AN ALTERNATE TO ITEM 2A --- 5/8 IN. THICK, APPLIED EITHER HORIZONTALLY OR VERTICALLY. INNER LAYERS FASTENED TO STUDS WITH 1-7/8 IN. LONG TYPE W COARSE THREAD GYPSUM PANEL STEEL SCREWS SPACED A MAX. 16 IN. WITH LAST SCREW 1 IN. FROM EDGE OF BOARD. OUTER LAYERS FASTENED TO STUDS WITH 1-7/8 IN. LONG TYPE W COARSE THREAD GYPSUM PANEL STEEL SCREWS SPACED A MAX. 16 IN. WITH LAST SCREW 1 IN. FROM EDGE OF BOARD. WHEN USED IN WIDTHS OTHER THAN 48 IN., GYPSUM BOARD TO BE INSTALLED HORIZONTALLY. ALL JOINTS IN OUTER LAYER OF DOUBLE LAYER SIDES STAGGERED WITH JOINTS IN INNER LAYER.
- NOTE: ONLY BOARD TYPES MARKED WITH * MAY BE USED IN ASSEMBLIES WITH 24 IN. OC SPACING OF STUDS.
- ACADIA DRYWALL SUPPLIES LTD --- TYPE X
- AMERICAN GYPSUM CO --- TYPE DBX-1, M-GLASS, AG-C+
- CERTAINTEEED GYPSUM INC --- TYPE C+ OR TYPE X
- CERTAINTEEED GYPSUM CANADA INC --- TYPE C+ OR TYPE X
- CGC INC --- TYPE C+, IP-X1, IP-X2+, IPC-AR+, SCX, SHX, ULX, WRC+, WRX.
- UNITED STATES GYPSUM CO --- TYPE C+, FRX-G, IP-X1, IP-X2+, IPC-AR+, SCX, SHX, ULX, WRC+ OR WRX.

WWW.LDILine.com

PUCCIANO & ENGLISH, INC.
 ARCHITECTS, AIA
 3084 MERCER UNIVERSITY DRIVE, SUITE 110
 ATLANTA, GA 30341
 PH 770-457-4823 FAX 770-451-0092
 denglish@pucciano-english.com

Legacy at Jones Farm Phase 2
 HUNTSVILLE, ALABAMA
 AN APARTMENT COMMUNITY FOR
RBJ BAILEY, LLC

JOB No: 1701
 DRAWN BY:
 CHECK BY:
 JOB PROGRESS:
 ITEM DATE
 PERMIT SET 07-14-2017
 PERMIT SET 02-26-2018

REVISIONS:
 DATE NO:

This drawing, as an instrument of service, is and shall remain the property of the Architect and shall not be reproduced, published or used in any way without the permission of the Architect.

UL ASSEMBLIES
 SHEET NO.
A0.7