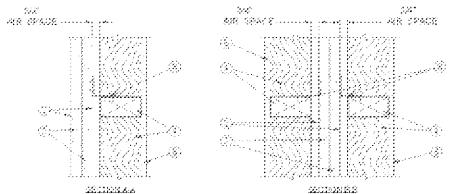


2 HOUR NON-LOAD BEARING

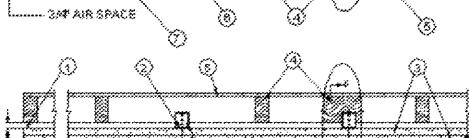
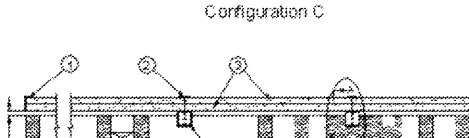
DESIGN NO. U336
OCTOBER 27, 2010
EXPOSED TO FIRE FROM SEPARATION WALL SIDE ONLY
NON-BEARING WALL RATINGS - 2 HR
FLOOR RATINGS - 120 MIN



CONFIGURATION A
EXPOSED TO FIRE FROM SEPARATION WALL SIDE ONLY



CONFIGURATION B
EXPOSED TO FIRE FROM SEPARATION WALL SIDE



CONFIGURATION D
EXPOSED TO FIRE FROM SEPARATION WALL

SEPARATION WALL (MAX HEIGHT - 66 FT)

1. FLOOR, INTERMEDIATE OR TOP WALL - 2 IN. WIDE CHANNEL SHAPED WITH 1 IN. LONG LEGS FORMED FROM NO. 25 MSG GALV STEEL, SECURED WITH SUITABLE FASTENERS SPACED 24 IN. OC.

2. METAL STUDS - STEEL MEMBERS FORMED FROM NO. 25 MSG GALV STEEL HAVING CHANNEL SHAPED FLANGES SPACED 24 IN. OC; OVERALL DEPTH 2 IN. AND FLANGE WIDTH 7/8 IN.

3. GYPSUM BOARD - TWO LAYERS OF 1/2 IN. THICK GYPSUM BOARD LAMINATED TOGETHER, SUPPLIED IN NOM 24 IN. WIDTHS, VERTICAL JOINTS CENTERED OVER STUDS AND FITTED INTO "H" STUDS.

CGC INC - TYPE SLX
UNITED STATES GYPSUM CO - TYPE SX

4. 1/2 IN. STUDS - NOM 2 BY 4 IN. STUDS SPACED 24 IN. OC; STUDS CROSS BRACED AT MID-HEIGHT WHERE NECESSARY FOR ATTACHMENT TO SEPARATION WALL.

4A. STEEL STUDS - (AS AN ALTERNATE TO ITEM 4, NOT SHOWN) - FOR BEARING WALL RATINGS - CORROSION RESISTANT STEEL STUDS, MIN NO. 20 MSG (0.0329 IN. THICK) PRIMED STEEL OR MIN 3-1/2 IN. WIDE, MIN 1/2 IN. THICK CORROSION-PROTECTED STEEL STUDS, AND TO ADJACENT ASSEMBLIES SUCH AS A FLOOR, CEILING, AND/OR OTHER WALLS, ATTACHED TO FLOOR AND CEILING ASSEMBLIES WITH STEEL FASTENERS SPACED NOT GREATER THAN 24 IN. OC; STUD FRAMING AND WOOD FRAMING NECESSARY FOR CLIP ATTACHMENT; MIN 3/4 IN. SEPARATION BETWEEN STEEL FRAMING AND AREA SEPARATION WALL; FINISH RATINGS HAS NOT BEEN EVALUATED FOR STEEL STUDS.

4B. STEEL STUDS - AS AN ALTERNATE TO ITEMS 4 AND 4A, FOR USE IN CONFIGURATION B ONLY, NOT SHOWN) - FOR NON-BEARING WALL RATINGS - CHANNEL SHAPED, FABRICATED FROM MIN 25 MSG CORROSION-PROTECTED STEEL, MIN 3-1/2 IN. WIDE, MIN 1/4 IN. FLANGES AND 1/4 IN. RETURN, SPACED A MAX OF 24 IN. OC; STUDS TO BE CUT 3/8 TO 5/8 IN. LESS THAN ASSEMBLY HEIGHT; TOP AND BOTTOM TRACKS SHALL BE CHANNEL SHAPED, FABRICATED FROM MIN 25 MSG CORROSION-PROTECTED STEEL, MIN WIDTH TO ACCOMMODATE STUD SIZE, WITH MIN 1 IN. LONG LEGS, ATTACHED TO FLOOR AND CEILING WITH PASTENERS 24 IN. OC; MAX. STUDS CROSS-BRACED WITH STUD FRAMING AT MIDHEIGHT WHERE NECESSARY FOR CLIP ATTACHMENT; MIN 3/4 IN. SEPARATION BETWEEN STEEL FRAMING AND AREA SEPARATION WALL; FINISH RATINGS HAS NOT BEEN EVALUATED FOR STEEL STUDS.

5. GYPSUM BOARD - CLASSIFIED OR UNCLASSIFIED - MIN 1/2 IN. THICK, 4 FT WIDE, APPLIED EITHER HORIZONTALLY OR VERTICALLY, GYPSUM BOARD ATTACHED TO STUDS WITH 1-1/4 IN. LONG STEEL DRYWALL NAILS SPACED 8 IN. OC; VERTICAL JOINTS CENTERED OVER STUDS; (OPTIONAL) JOINTS COVERED WITH PAPER TAPE AND JOINT COMPOUND; NAIL HEADS COVERED WITH JOINT COMPOUND.

6. ATTACHMENT CLIPS - ALUMINUM ANGLE, 0.063 IN. THICK, 2 IN. WIDE WITH 2 IN. AND 2-1/4 IN. LEGS, CLIPS SECURED WITH TYPE 3 SCREWS 3/8 IN. LONG TO "H" STUDS AND WITH TYPE N SCREWS 1-1/4 IN. LONG TO WOOD FRAMING THROUGH HOLES PROVIDED IN CLIP.

6A. CLIP PLACEMENT (ITEM 6) FOR SEPARATION WALLS UP TO 25 FT HIGH. SPACE CLIPS A MAX OF 10 FT OC VERTICALLY BETWEEN WOOD FRAMING AND "H" STUDS.

6B. CLIP PLACEMENT (ITEM 6) FOR SEPARATION WALLS UP TO 44 FT HIGH. SPACE CLIPS AS DESCRIBED IN ITEM 6A FOR UPPER 24 FT, REMAINING WALL AREA BELOW REQUIRES CLIPS SPACED A MAX 5 FT OC VERTICALLY BETWEEN WOOD FRAMING AND "H" STUDS.

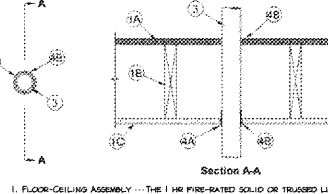
6C. CLIP PLACEMENT (ITEM 6) FOR SEPARATION WALLS UP TO 66 FT HIGH. SPACE CLIPS AS DESCRIBED IN ITEM 6A FOR UPPER 24 FT, SPACE CLIPS AS DESCRIBED IN ITEM 6B FOR NEXT 20 FT, BELOW THE UPPER 24 FT, REMAINING WALL AREA BELOW REQUIRES CLIPS SPACED A MAX OF 40 IN. OC VERTICALLY BETWEEN WOOD FRAMING AND "H" STUDS.

7. NON-BEARING WALL PARTITION INTERSECTION - (OPTIONAL) TWO NOMINAL 2 BY 4 IN. STUD OR NOMINAL 2 BY 6 IN. STUD NAIL TOGETHER WITH TWO 3 IN. LONG 10D NAILS SPACED A MAX 16 IN. OC VERTICALLY AND FASTENED TO ONE SIDE OF THE MINIMUM 2 BY 4 IN. STUD WITH 3 IN. LONG 10D NAILS SPACED A MAX 16 IN. OC VERTICALLY; INTERSECTION BETWEEN PARTITION WOOD STUDS TO BE FLUSH WITH THE 2 BY 4 IN. STUDS; THE WALL PARTITION WOOD STUDS ARE TO BE FRAMED WITH A SECOND 2 BY 4 IN. WOOD STUD FASTENED WITH 3 IN. LONG 10D NAILS SPACED A MAX 16 IN. OC VERTICALLY; MAXIMUM ONE NON-BEARING WALL PARTITION INTERSECTION PER STUD CAVITY; NON-BEARING WALL PARTITION STUD DEPTH SHALL BE AT A MINIMUM EQUAL TO THE DEPTH OF THE WALL.

*BEARING THE UL CLASSIFICATION MARK

NONMETALLIC PIPE OR CONDUIT THROUGH WOOD FLOOR / CEILING SYSTEM

DESIGN NO. F-C-2044
JULY 12, 2011
REARING WALL RATINGS - 1 HR
LOAD RESTRICTED FOR CANADIAN APPLICATIONS - SEE GUIDE B0477



1. FLOOR-CEILING ASSEMBLY - THE 1 HR FIRE-RATED SOLID OR TRUSSED LUMBER JOIST FLOOR-CEILING ASSEMBLY SHALL BE CONSTRUCTED OF THE MATERIALS AND IN THE MANNER SPECIFIED IN INDIVIDUAL L500 SERIES FLOOR-CEILING DESIGNS IN THE UL FIRE RESISTANCE DIRECTORY. THE 2 HR FIRE-RATED WOOD JOIST FLOOR-CEILING ASSEMBLY SHALL BE CONSTRUCTED OF THE MATERIALS AND IN THE MANNER SPECIFIED IN INDIVIDUAL L501 OR L511 OR L535 IN THE UL FIRE RESISTANCE DIRECTORY. THE F RATINGS OF THE FIRESTOP SYSTEM IS EQUAL TO THE FIRE RATING OF THE FLOOR-CEILING ASSEMBLY. THE GENERAL CONSTRUCTION FEATURES OF THE FLOOR ASSEMBLY ARE SUMMARIZED BELOW.

A. FLOORING SYSTEM - LUMBER OR PLYWOOD SUBFLOOR WITH FINISH FLOOR OF LUMBER, PLYWOOD OR FLOOR TOPPING MATERIALS AS SPECIFIED IN THE INDIVIDUAL FLOOR-CEILING DESIGN. MAX DIAM OF FLOOR OPENING IS 3 IN.

B. WOOD JOISTS - NOM 2 BY 10 IN. (51 BY 254 MM) LUMBER JOISTS SPACED 16 IN. (406 MM) OC WITH NOM 1 BY 3 IN. (25 BY 76 MM) LUMBER BRIDGES AND WITH ENDS FASTENED AS AN ALTERNATE TO LUMBER JOISTS, NOM 10 IN. (254 MM) DEEP (OR DEEPER) LUMBER, STEEL OR COMBINATION LUMBER AND STEEL JOISTS, TRUSSES OR STRUCTURAL WOOD MEMBERS WITH BRIDGES AS REQUIRED WITH ENDS FIRESTOPPED.

C. GYPSUM BOARD - THICKNESS, TYPE, NUMBER OF LAYERS AND FASTENERS AS REQUIRED IN THE INDIVIDUAL FLOOR-CEILING DESIGN. MAX DIAM OF CEILING OPENING IS 3 IN. (76 MM).

D. FLOORING CHANNELS - (NOT SHOWN) - IN 2 HR FIRE-RATED ASSEMBLIES, RESILIENT GALV STEEL FLOORING CHANNELS INSTALLED PERPENDICULAR TO WOOD JOISTS BETWEEN BASE AND FACE LAYERS OF GYPSUM BOARD (ITEM C). FLOORING CHANNELS SPACED MAX 24 IN. (610 MM) OC WITH ADDITIONAL SHORT LEGS OF FLOORING CHANNELS INSTALLED ADJACENT TO AND MAX 3 IN. (76 MM) FROM TWO OPPOSING SIDES OF PENETRANT.

2. CHASE WALL - (OPTIONAL, NOT SHOWN) - THE THROUGH-PENETRANT (ITEM 3) MAY BE ROUTED THROUGH A 1 OR 2 HR FIRE RATED SINGLE, DOUBLE OR STAGGERED WOOD STUD/GYPSUM BOARD CHASE WALL, CONSTRUCTED OF THE MATERIALS AND IN THE MANNER SPECIFIED IN INDIVIDUAL L300 SERIES WALL AND PARTITION DESIGNS IN THE UL FIRE RESISTANCE DIRECTORY AND SHALL HAVE THE FOLLOWING CONSTRUCTION DETAILS:

A. STUDS - NOM 2 BY 4 IN. (51 BY 102 MM), 2 BY 6 IN. (51 BY 152 MM) OR DOUBLE NOM 2 BY 4 IN. (51 BY 102 MM) LUMBER STUDS.

B. SOLE PLATE - NOM 2 BY 4 IN. (51 BY 102 MM), 2 BY 6 IN. (51 BY 152 MM) OR PARALLEL, 2 BY 4 IN. (51 BY 102 MM) LUMBER PLATES, TIGHTLY BUTTED.

C. TOP PLATE - THE DOUBLE TOP PLATE SHALL CONSIST OF TWO NOM 2 BY 4 IN. (51 BY 102 MM), 2 BY 6 IN. (51 BY 152 MM) OR TWO SETS OF PARALLEL, 2 BY 4 IN. (51 BY 102 MM) LUMBER PLATES, TIGHTLY BUTTED, MAX DIAM OF OPENING IS 3 IN. (76 MM).

D. GYPSUM BOARD - THICKNESS, TYPE, NUMBER OF LAYERS AND FASTENERS SHALL BE AS SPECIFIED IN INDIVIDUAL WALL AND PARTITION DESIGN.

3. THROUGH PENETRANTS - ONE NONMETALLIC PIPE OR CONDUIT TO BE INSTALLED APPROXIMATELY MIDWAY BETWEEN WOOD JOISTS AND COVERED WITHIN THE FIRESTOP SYSTEM. DIAM OF OPENING HOLE-SAVED THROUGH FLOORING SYSTEM AND THROUGH GYPSUM WALL BOARD CEILING TO BE NOM 5/8 IN. (16 MM) LARGER THAN THE OUTSIDE DIAM OF THROUGH-PENETRANT. PIPE OR CONDUIT TO BE RIGIDLY SUPPORTED ON BOTH SIDES OF THE FLOOR-CEILING ASSEMBLY. THE FOLLOWING TYPES AND SIZES OF NONMETALLIC PIPES OR CONDUITS MAY BE USED:

A. POLYVINYL CHLORIDE (PVC) PIPE - NOM 2 IN. (51 MM) DIAM (OR SCHEDULE 40 CELLULAR OR SOLID CORE PVC PIPE FOR USE IN CLOSED (DRAIN, WASTE OR VENT) PIPE SYSTEMS).

B. ACRYLONITRILE BUTADIENE STYRENE (ABS) PIPE - NOM 2 IN. (51 MM) DIAM (OR SMALLER SCHEDULE 40 CELLULAR OR SOLID CORE ABS PIPE FOR USE IN CLOSED (DRAIN, WASTE OR VENT) PIPE SYSTEMS).

C. RIGID NONMETALLIC FIBERGLASS PIPE - NOM 2 IN. (51 MM) DIAM (OR SCHEDULE 40 PVC CONDUIT INSTALLED IN ACCORDANCE WITH THE NATIONAL ELECTRICAL CODE (NFPA No. 70)).

D. UNREINFORCED POLYETHYLENE TEREPHTHALATE (PET) PIPE - NOM 2 IN. (51 MM) DIAM (OR SMALLER SCHEDULE 40 PVC CONDUIT FOR USE IN CLOSED (DRAIN, WASTE OR VENT) PIPE SYSTEMS).

E. THE F RATING IS TO BE EQUAL TO THE F RATING OF THE PIPE. WHEN PIPE LARGER THAN 2 IN. (51 MM) DIAM IS USED, THE F RATING IS 1 HR.

4. FIRESTOP SYSTEM - THE FIRESTOP SYSTEM SHALL CONSIST OF THE FOLLOWING:

A. FILL, VOID OR CAVITY MATERIALS - WRAP STRIP - NOM 1/4 IN. (6 MM) THICK BY (30 MM) WIDE INTUMESCENT STRIP (RES), NOM 1/8 IN. (3.2 MM) BY 2 IN. (51 MM) WIDE (UL-L), OR NOM 3/16 IN. (4.8 MM) BY 2 IN. (51 MM) WIDE INTUMESCENT STRIP (UL) WITH A PLASTIC FILM, ONE LAYER OF WRAP STRIP IS WRAPPED AROUND THE PENETRANT AT ITS EDGES FROM BOTTOM SURFACE OF CEILING OR LOWER TOP PLATE CHASE WALL ASSEMBLY WITH ENDS BUTTED AND HELD IN PLACE WITH A SINGLE WRAP OF MINIMUM POLYMER. THE BOTTOM EDGE OF THE WRAP STRIP SHALL EXTEND 1/4 IN. (6 MM) BELOW BOTTOM SURFACE OF CEILING OR THE LOWER TOP PLATE OF CHASE WALL ASSEMBLY.

B. FILL, VOID OR CAVITY MATERIALS - SEALANT - FILL MATERIAL FORCED INTO ANNULUS TO FILL SPACE TO MAX EXTENT POSSIBLE, FLUSH WITH TOP SURFACE OF FLOOR AND BOTTOM SURFACE OF CEILING OR LOWER TOP PLATE OF CHASE WALL ASSEMBLY. ADDITIONAL FILL MATERIAL TO BE INSTALLED TO FORM A MAX 1/4 IN. (6 MM) GROW AROUND WRAP STRIP AT ITS EDGES FROM BOTTOM SURFACE OF CEILING OR LOWER TOP PLATE OF CHASE WALL ASSEMBLY.

SPECIFIED TECHNOLOGIES INC - SPECIAL FRD, BULL OR BULLD WRAP STRIP

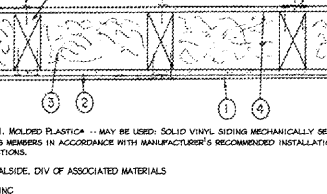
SPECIFIED TECHNOLOGIES INC - SPECIAL SERIES 556 SEALANT OR SPECIAL LCI SEALANT

*BEARING THE UL LISTING MARK

*BEARING THE UL CLASSIFICATION MARKING

TYPICAL BREEZEWAY WALL ASSEMBLY

DESIGN NO. U373
JULY 12, 2011
REARING WALL RATINGS - 1 HR
LOAD RESTRICTED FOR CANADIAN APPLICATIONS - SEE GUIDE B0477



1. MOLDED PLASTIC - MAY BE USED: SOLID VINYL SIDING MECHANICALLY SECURED TO FRAMING MEMBERS IN ACCORDANCE WITH MANUFACTURER'S RECOMMENDED INSTALLATION INSTRUCTIONS.

ALSO, DIV OF ASSOCIATED MATERIALS

INC
GENTEX BUILDING PRODUCTS LTD
NEBRASKA PLASTICS INC
VITEC CORP

2. GYPSUM BOARD - NOM 5/8 IN. THICK GYPSUM SHEATHING SUPPLIED IN MIN 2 FT WIDE SHEETS, INSTALLED HORIZONTALLY, ATTACHED TO EACH WOOD STUD WITH 2 IN. LONG 60 NAILS SPACED VERTICALLY 8 IN. OC.

ANY UL CLASSIFIED GYPSUM BOARD THAT IS ELIGIBLE FOR USE IN DESIGN NOS. L501, G512 OR L305. SEE GYPSUM BOARD (G&A) CATEGORY FOR NAMES OF CLASSIFIED COMPANIES.

3. BATTS AND BLANKETS - MIN 3 IN. THICK MINERAL OR GLASS FIBER BATTS. SEE BATTS AND BLANKETS (B&L) CATEGORY FOR NAMES OF CLASSIFIED COMPANIES.

3A. FIBER, SPRAYED - AS AN ALTERNATE TO BATTS AND BLANKETS (ITEM 3) - APPLY APPLIED CELLULOSE MATERIAL. THE FIBER IS APPLIED WITH WATER TO COMPLETELY FILL THE ENCLOSED CAVITY IN ACCORDANCE WITH THE APPLICATION INSTRUCTIONS SUPPLIED WITH THE PRODUCT. NOMINAL DRY DENSITY OF 3.0 LB/FT³. ALTERNATE APPLICATION METHOD: FIBER IS APPLIED WITH U.S. GREENFIBER LLC TYPE A300 HOT MELT ADHESIVE AT A MINIMUM RATE OF ONE PART ADHESIVE TO 6.5 PARTS FIBER TO COMPLETELY FILL THE ENCLOSED CAVITY IN ACCORDANCE WITH THE APPLICATION INSTRUCTIONS SUPPLIED WITH THE PRODUCT. NOMINAL DRY DENSITY OF 2.5 LB/FT³.

U.S. GREENFIBER LLC - COCONUT STABILIZED OR COCONUT-FIBER RATED MATERIAL

3B. FIBER, SPRAYED - AS AN ALTERNATE TO ITEMS 3 AND 3A - APPLY APPLIED CELLULOSE MATERIAL. THE FIBER IS APPLIED WITH WATER TO COMPLETELY FILL THE ENCLOSED CAVITY IN ACCORDANCE WITH THE APPLICATION INSTRUCTIONS SUPPLIED WITH THE PRODUCT. THE MINIMUM DRY DENSITY SHALL BE 4.30 LB/FT³.

NI-HOOL CO INC - CELLULOSE EMULATION

3C. FIBER, SPRAYED - AS AN ALTERNATE TO ITEMS 3 AND 3A - APPLY APPLIED CELLULOSE FIBER. THE FIBER IS APPLIED WITH WATER TO COMPLETELY FILL THE ENCLOSED CAVITY IN ACCORDANCE WITH THE APPLICATION INSTRUCTIONS SUPPLIED WITH THE PRODUCT. THE MINIMUM DRY DENSITY SHALL BE 4.30 LB/FT³.

INTERNATIONAL CELLULOSE CORP - CELLULOSE

4. GYPSUM BOARD - NOM 5/8 IN. THICK GYPSUM BOARD WITH REVELED, SQUARE OR YAPERO EDGES, PANELS NAILED 7 IN. OC, WITH 60 NAILS PER PANEL, INSTALLED HORIZONTALLY. OTHER THAN TYPE 5, SHALL BE INSTALLED VERTICALLY.

ANY UL CLASSIFIED GYPSUM BOARD THAT IS ELIGIBLE FOR USE IN DESIGN NOS. L501, G512 OR L305. SEE GYPSUM BOARD (G&A) CATEGORY FOR NAMES OF CLASSIFIED COMPANIES.

4A. WALL PARTITION FACINGS AND ACCESSORIES - (AS AN ALTERNATE TO ITEM 4) - NOMINAL 5/8 IN. THICK GYPSUM BOARD PANELS, APPLIED VERTICALLY ONLY AND SECURED AS DESCRIBED IN ITEM 4.

SERIOUS ENERGY INC - TYPE QUIETROCK ES, TYPE QUIETROCK OR-SZT

4B. GYPSUM BOARD - (AS AN ALTERNATE TO ITEM 4) - 5/8 IN. THICK, 4 FT. WIDE, PAPER SURFACED APPLIED VERTICALLY ONLY AND SECURED AS DESCRIBED IN ITEM 4.

CERTANTEED GYPSUM INC - TYPE SILENTX

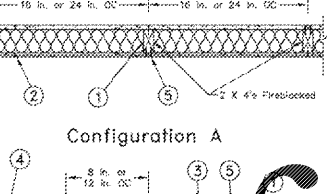
5. NAILHEADS - COVERED WITH JOINT COMPOUND.

6. JOINTS - COVERED WITH PAPER TAPE AND JOINT COMPOUND.

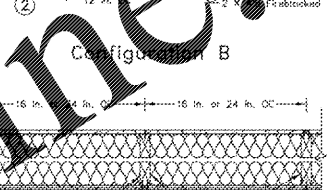
*BEARING THE UL CLASSIFICATION MARK

NON-LOAD BEARING WALL ASSEMBLY

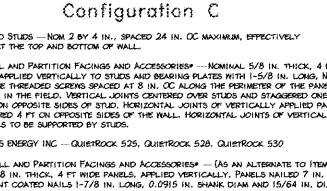
DESIGN NO. U356
SEPTEMBER 03, 2011
NON-BEARING WALL RATINGS - 1 HR



Configuration A



Configuration B



Configuration C

1. WOOD STUDS - NOM 2 BY 4 IN., SPACED 24 IN. OC MAXIMUM, EFFECTIVELY FIRESTOPPED AT THE TOP AND BOTTOM OF WALL.

2. WALL AND PARTITION FACINGS AND ACCESSORIES - NOMINAL 5/8 IN. THICK, 4 FT WIDE PANELS, APPLIED VERTICALLY TO STUDS AND BEARING PLATES WITH 1-5/8 IN. LONG, NO. 6, TYPE 5, COARSE THREAD SCREWS SPACED AT 8 IN. OC ALONG THE PERIMETER OF THE PANELS, AND 12 IN. OC IN THE FIELD. VERTICAL JOINTS CENTERED OVER STUDS AND STAGGERED ONE STUD CAVITY ON OPPOSITE SIDES OF STUD. HORIZONTAL JOINTS OF VERTICALLY APPLIED PANELS TO BE STAGGERED 4 FT ON OPPOSITE SIDES OF THE WALL. HORIZONTAL JOINTS OF VERTICALLY APPLIED PANELS TO BE SUPPORTED BY STUDS.

SERIOUS ENERGY INC - QUIETROCK 525, QUIETROCK 526, QUIETROCK 530

2A. WALL AND PARTITION FACINGS AND ACCESSORIES - (AS AN ALTERNATE TO ITEM 2) - NOMINAL 5/8 IN. THICK, 4 FT WIDE PANELS, APPLIED VERTICALLY. PANELS NAILED 7 IN. OC WITH 60 CORNIT COATED NAILS 1-7/8 IN. LONG, 0.0915 IN. SHANK DIAM AND 15/64 IN. DIAM HEADS. HORIZONTAL JOINTS OF VERTICALLY APPLIED PANELS TO BE STAGGERED BY STUDS.

SERIOUS ENERGY INC - TYPE QUIETROCK ES, TYPE QUIETROCK OR-SZT

3. GYPSUM WALLBOARD - NOMINAL 5/8 IN. THICK, 4 FT WIDE, APPLIED VERTICALLY TO STUDS AND BEARING PLATES WITH 1-5/8 IN. LONG, NO. 6, TYPE 5, COARSE THREAD SCREWS, AT 8 IN. OC ALONG THE PERIMETER OF THE PANELS AND 12 IN. OC IN THE FIELD. VERTICAL JOINTS CENTERED OVER STUDS AND STAGGERED ONE STUD CAVITY ON OPPOSITE SIDES OF STUD. HORIZONTAL JOINTS OF VERTICALLY APPLIED PANELS TO BE STAGGERED 4 FT ON OPPOSITE SIDES OF THE WALL. HORIZONTAL JOINTS OF VERTICALLY APPLIED PANELS TO BE BACKED WITH NOM 2 BY 4 IN. WOOD BACKINGS.

CGC INC - TYPES SCX OR ULX
UNITED STATES GYPSUM CO - TYPES SCX OR ULX
USG MEDICO S A DE C V - TYPES SCX OR ULX

4. BATTS AND BLANKETS - UL CLASSIFIED GLASS FIBER INSULATION WITH OR WITHOUT KRAFT PAPER FACINGS, NOMINAL 3-1/2 IN. THICK, NOMINAL DENSITY OF 0.95 PCF, FASTENED TO WOOD STUDS USING METAL FASTENERS TO COMPLETELY FILL STUD CAVITIES.

5. JOINTS AND SCREWMENDS - JOINT COMPOUND APPLIED IN TWO COATS TO JOINTS AND SCREW HEADS. PAPER TAPE, NOM 2 IN. WIDE, EMBEDDED IN FIRST LAYER OF COMPOUND OVER ALL JOINT.

*BEARING THE UL CLASSIFICATION MARK



PUCCIANO & ENGLISH, INC
ARCHITECTS, AIA
3084 MERCER UNIVERSITY DRIVE, SUITE 110
ATLANTA, GA 30341
PH 770-457-4082; FAX 770-451-0082
denglish@pucciano-english.com



JOB No: 1701

DRAWN BY:

CHECK BY:

JOB PROGRESS:

ITEM DATE
PRICING SET 07-14-2017
PERMIT SET 02-26-2018

REVISIONS:

DATE NO.

This drawing, as an instrument of service, is the property of the Architect and shall not be reproduced, published or used in any way without the permission of the Architect.

Legacy at Jones Farm Phase 2
HUNTSVILLE, ALABAMA
AN APARTMENT COMMUNITY FOR
RBJ BAILEY, LLC

UL SHEET

SHEET NO.

A0.4

Order Plans