

GENERAL NOTES

A TELEPHONE AND COMPUTER DATA SYSTEMS:

- PROVIDE AND INSTALL ALL TELEPHONE AND DATA CONDUITS.
- VACUUM OUT ALL CONDUITS TO REMOVE WATER.
- PROVIDE PULL-STRING IN EACH CONDUIT.
- OWNER SHALL PROVIDE ALL TELEPHONE AND DATA WIRING.

B FIRE ALARM NOTE: IN THE EVENT A MONITORED FIRE ALARM SYSTEM IS REQUIRED BY THE AUTHORITY HAVING JURISDICTION THE ALARM SYSTEM WILL BE CONTRACTED DIRECTLY BY THE ALARM SERVICES MANAGER. THE GENERAL CONTRACTOR SHALL NOT PROCURE ANYONE TO INSTALL OR QUOTE THESE SYSTEMS UNLESS THEY HAVE BEEN ASKED TO DO SO BY LEIGH SIDES WITH THE O'REILLY AUTOMOTIVE CORPORATE OFFICE @ 417/829-5712 IF A SYSTEM IS NEEDED OR IF THERE ARE ANY QUESTIONS.

KEY NOTES

- TANK WATER HEATER REFER TO DETAIL 6/P2.
- INSTALLER COUNTER PROVIDE 4"x4" BOXES HUNG @ 90° A.F.F. TO BOTTOM OF BOX. CONDUIT SHALL EXTEND MAX. OF 5' ABOVE BOX.
- TEMPORARY GENERATOR OUTLET RELIANCE PB30. WIRE TO GENERATOR TRANSFER SWITCH. SEE 4/E4 ONE-LINE DIAGRAM. PROVIDE SIGN THAT GENERATOR OPERATION IS REQUIRED TO BE OUTSIDE OF BUILDING.

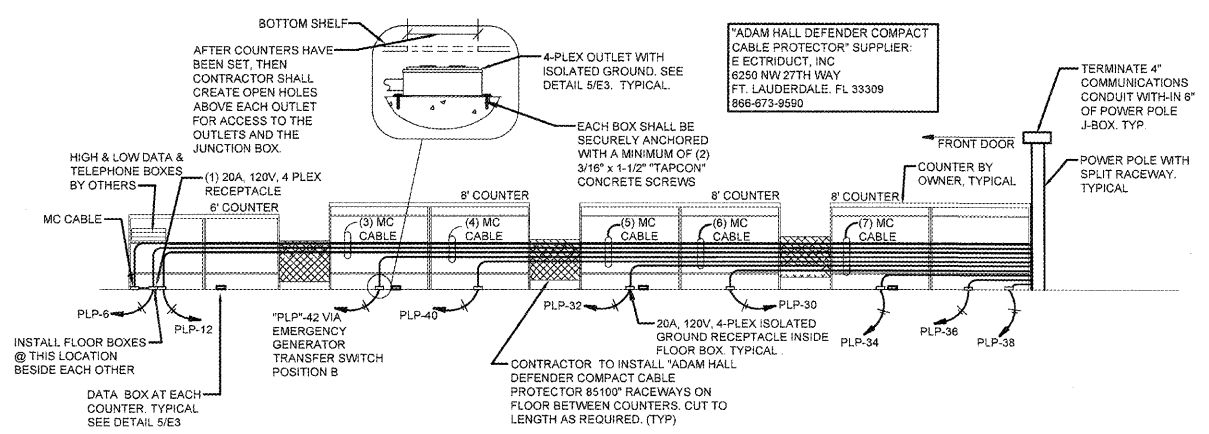
- SHOW WINDOW RECEPTACLE. MOUNT NOT MORE THAN 18" ABOVE WINDOW. WHERE BOX CAN NOT BE RECESSED ABOVE WINDOW, MOUNT IN CEILING TILE ADJACENT TO WALL. (TYPICAL OF 6)
- OPEN SIGN MOUNT RECEPTACLE IN CEILING FOR "OPEN" SIGN CIRCUIT RECEPTACLE TO NEAREST LIGHTING CONTROL PANEL CONTROLLED LIGHTING CIRCUIT AND AHEAD OF ALL DIMMER SWITCHES AND DAY LIGHTING CONTROLS. "OPEN" SIGN CAN ALSO BE OPERATED BY INTEGRAL PULL CHAIN. SEE DETAIL 1/E3. ROUTE TO VENSTAR CONTROL PANEL. SEE SHEET VS1.
- EMG VENSTAR SURVEYOR SYSTEM. COORDINATE LOCATION IN FIELD. SEE DETAIL 3/E3.
- DATA PROVIDE 4"x4" DATA OUTLET BOX AT THIS LOCATION.
- GENERATOR CORD BOX. PROVIDE HOFFMAN #ASE12X12X4 BOX WITH SCREW COVER (NEMA 1 ENCLOSURE) PROVIDE LABEL FOR GENERATOR CORD STORAGE ONLY.
- FUTURE POWER PROVIDE DEDICATED CIRCUIT FOR FUTURE USE (9'-8" AFF TO BOTTOM WITHIN HUBBELL DEEP SINGLE GANG HINGED COVER #RW67350).
- OFFICE PROVIDE POWER VIA STAND BY GEN. TRANSFER SWITCH POSITION "A".
- TELEPHONE PROVIDE POWER VIA STAND BY GEN. TRANSFER SWITCH POSITION "E".
- EXISTING ELECTRICAL PANELS. EC TO REMOVE PANELS AND EXTEND EXISTING WIRE TO ORIGINAL MAIN DISTRIBUTION PANEL.

SHOW ROOM COUNTERS & PRINTER LOCATION KEYNOTES

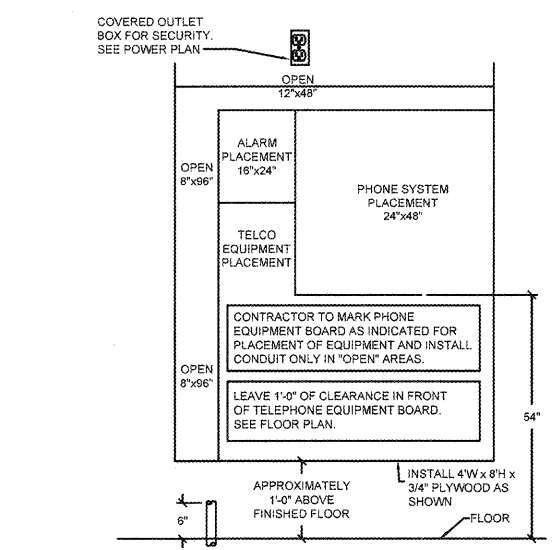
- POWER POLE. EQUAL TO HUBBELL HBLPP. ALUMINUM WITH FINISH AS SELECTION BY ARCHITECT. BLANK POLE WITH BARRIER FOR POWER AND DATA CHANNELS. HEIGHT AS REQUIRED.
- ALTERNATOR TESTER. SEE DETAIL 4/E1.
- FRONT COUNTER COKE WALL RECEPTACLE. PROVIDE DUPLEX RECEPTACLE FOR COKE MACHINE.
- COMPACT CABLE PROTECTOR. CONTRACTOR TO PROVIDE "ADAM HALL DEFENDER COMPACT CABLE PROTECTOR" RACEWAY ON FLOOR BETWEEN COUNTERS. SEE DETAIL 1/E3. PROVIDE QUANTITIES OF RACEWAY AS REQUIRED.
- DOOR POSITION SWITCHES. PROVIDE J-BOXES FOR ENERGY MANAGEMENT SYSTEM DOOR POSITION SWITCHES AND WIRE TO CONTROLLING HVAC IN AREA OF BACK DOOR PER SUPPLIER REQUIREMENTS. SEE SHEET VS1.
- COUNTER I/G FLOOR RECEPTACLE. PROVIDE QUADPLEX ISOLATED GROUND RECEPTACLE SEE DETAIL 7/E3.
- FLOOR QUADPLEX/FOURPLEX FOR PHONE/DATA. TYPICAL OF ALL COUNTERS. SEE DETAIL 1/E3.

WIRING WHIP FROM CEILING:

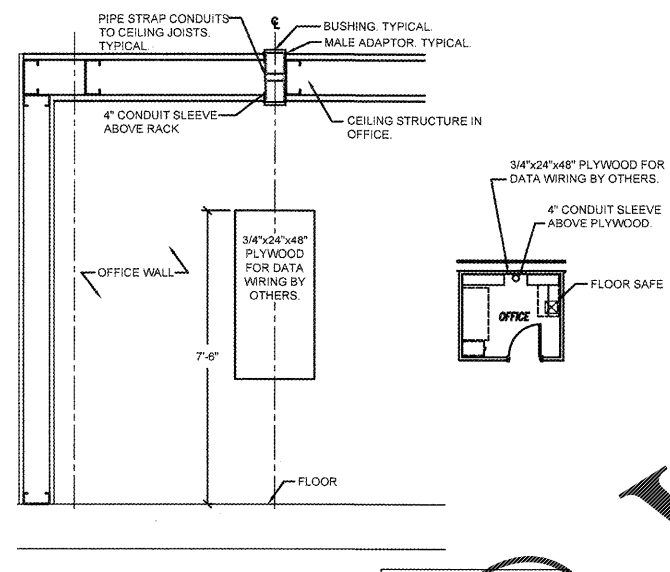
WIRE TO DEVICES WITH 20' OF WIRING "WHIP" OR TYPE MC CABLE. COIL AND "ZIP-TIE" WIRING WHIP TO PURLINS AT ROOF STRUCTURE. (FOR FUTURE DROP BY OWNER DOWN TO EQUIPMENT) WHERE A LOCATION HAS MULTIPLE DEVICES, LOCATE ALL DEVICES NEXT TO EACH OTHER AT ROOF STRUCTURE.



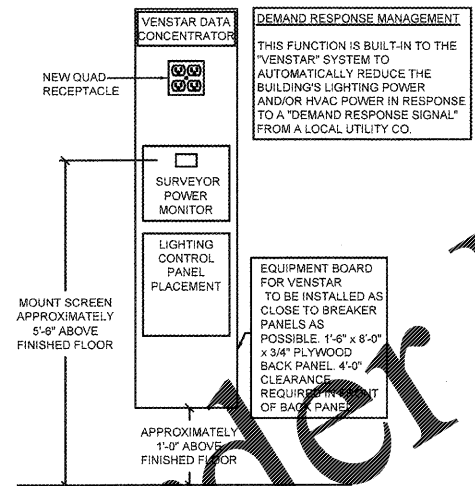
1 FLOOR MOUNTED RECEPTACLES UNDER COUNTERS
E3 SCALE: N.T.S.



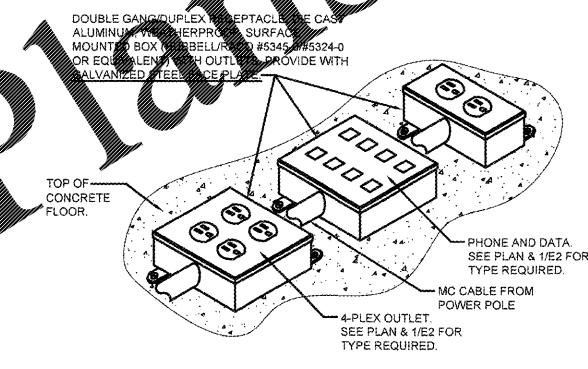
2 TELEPHONE EQUIPMENT BOARD
E3 SCALE: N.T.S.



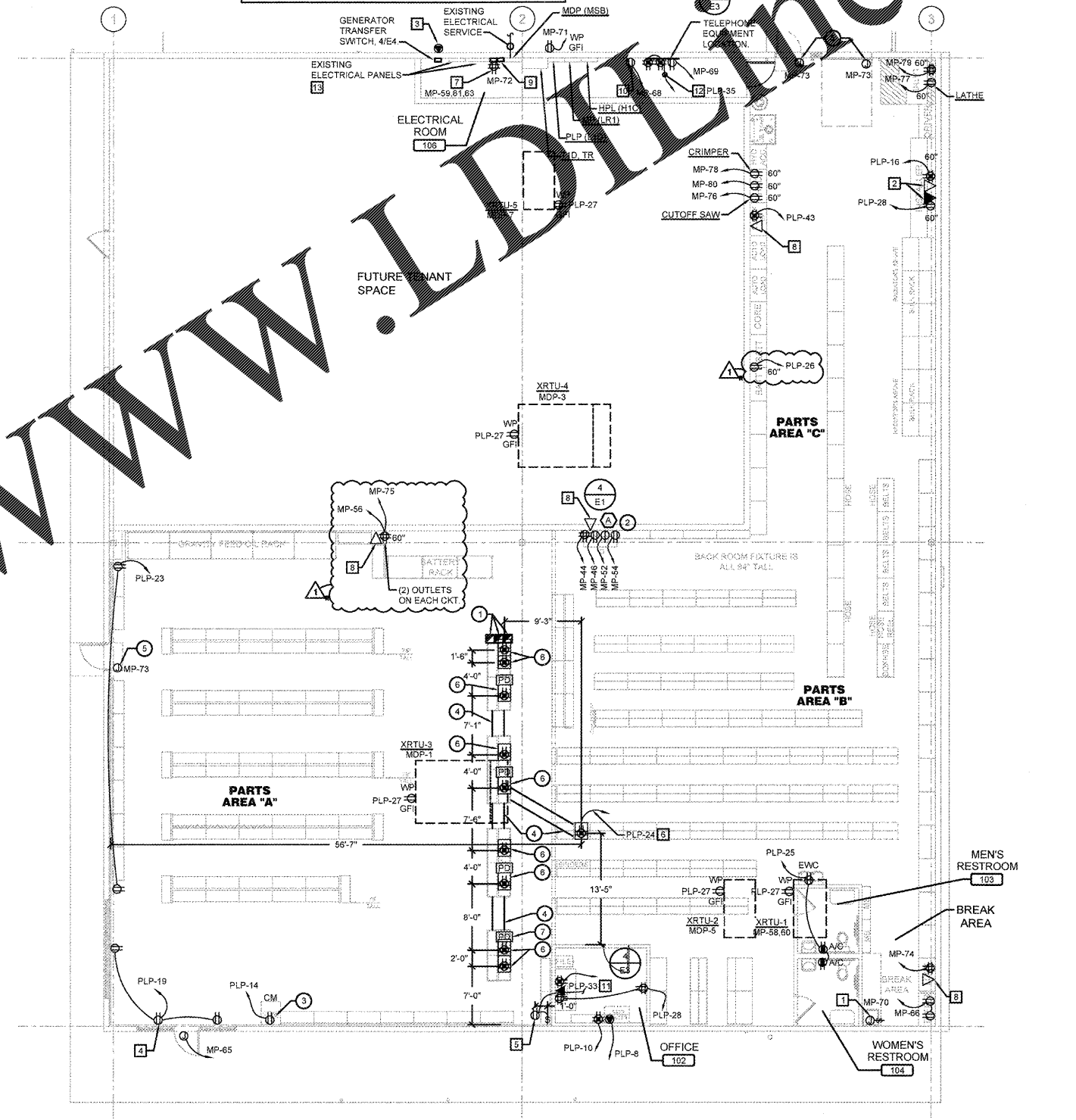
4 CONDUITS IN OFFICE
E3 SCALE: N.T.S.



3 VENSTAR EMS EQUIPMENT BOARD
E3 SCALE: N.T.S.



5 SURFACE MOUNTED FLOORBOX
E3 SCALE: N.T.S.



POWER PLAN
SCALE: 1/8"=1'-0"



REVISIONS:

ADDENDUM #1	03/12/18
-------------	----------

O'Reilly AUTO PARTS

CORPORATE OFFICES
233 SOUTH PATTERSON
SPRINGFIELD, MISSOURI 65802
417-862-2674 PHONE

PROJECT:
RE-MODEL O'REILLY AUTO PARTS STORE
523 NORTH MILITARY STREET
LORETTO, TN 38469

POWER PLAN



Professional of Record
Joseph A. Carter
Lic. #00112686
Exp. Date 10/31/19

DRAWN: YAV
CHECKED: HJA
DATE: 2-15-2018
JOB NO.: 319287 (LTO)
SHEET:

E3

COPYRIGHT 2018 - DESIGNS, DRAWINGS AND SPECIFICATIONS ARE INSTRUMENTS OF SERVICE AND ARE THE PROPERTY OF THE DESIGN PROFESSIONAL. REPRODUCTION PROHIBITED WITHOUT THE EXPRESSED WRITTEN CONSENT OF THE DESIGN PROFESSIONAL.