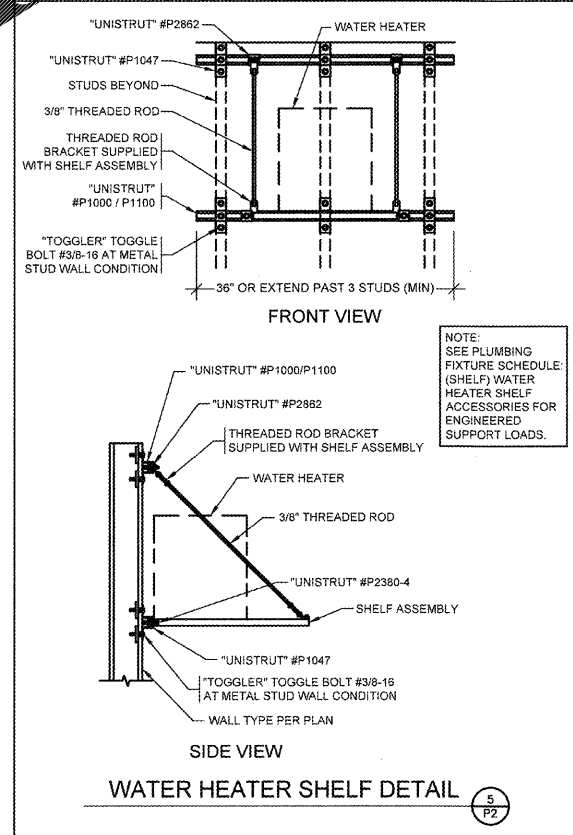
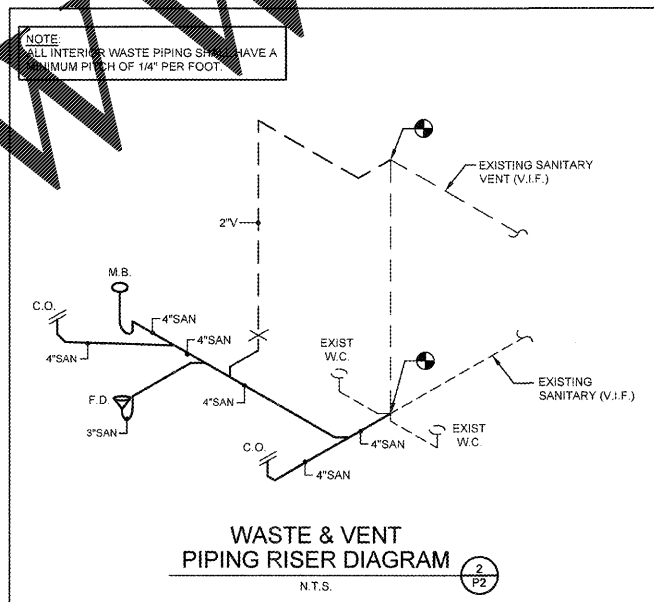
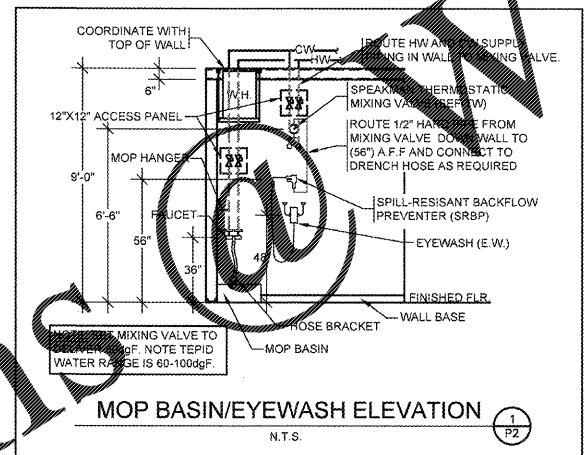
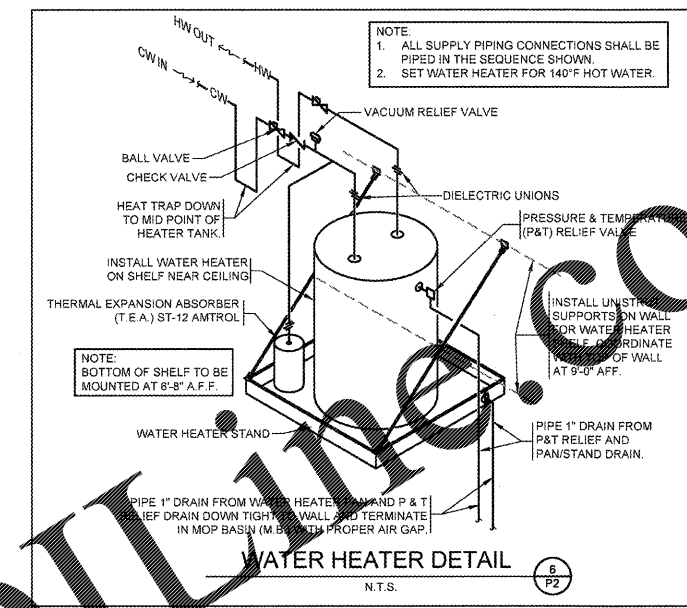


PLUMBING FIXTURE SCHEDULE / ALL FIXTURES & FITTINGS MUST BE "LEAD FREE"										
MARK	DESCRIPTION	MANUFACTURER	CATALOG NUMBER	ACCESSORIES	PIPING REQUIREMENTS			REMARKS	APPROVED MANUFACTURER'S	CODE APPROVALS
					WASTE	VENT	SUPPLY			
F.D.	FLOOR DRAIN	ZURN	ZN415-B-P	1/2" TRAP PRIMER CONNECTION	2"	2"	-	COMBINATION WASTE VENT	WADE & JAY R. SMITH	ASSE 1019-B
C.O.	CLEANOUT (INTERIOR)	JAY R. SMITH	4100	WICARPET CLAMPING RING WHERE REQUIRED	SEE PLAN	-	-	SAME SIZE AS LINE	WADE & ZURN	-
W.H.A.	WATER HAMMER ARRESTER	SIOUX CHIEF	652-A	-	-	-	-	-	WILLIAMS	-
T.P.1	TRAP PRIMER	MIFAB	M2-500-NPB	MI-GAP AIR GAP FITTING	-	-	1/2"	PRESSURE DROP ACTIVATED TRAP PRIMER	-	-
M.B.	MOP BASIN	FIAT	FIAT MSB-2424	FIAT #832-AA HOSE & BRACKET, FIAT #889-CC-24" MOP HANGER, ZURN #2842M4-WHK-5H SERVICE FAUCET	3"	2"	3/4"	W/VACUUM BREAKER ON FAUCET. ALSO ADD HOSE CONNECTION VACUUM BREAKER (WATTS #8) ON FAUCET'S SPOUT	STERN-WILLIAMS	-
E.W.	EYE WASH	SPEAKMAN	SEF-9200 WITH INTEGRAL VACUUM BREAKER AND CHECK VALVE	SPEAKMAN THERMOSTATIC MIXING VALVE (SEF-TW), SEF-9200-ILR	-	-	1/2"	SET MIXING VALVE TO DELIVER 80DGF. NOTE: TEPID WATER RANGE IS 60-100DGF.	BRADLEY-HAWS	ASME A112.18.1-2000, CSA B125-88, ANSI Z356-1, INTEGRAL VACUUM BREAKER, ASSE 1011
SRBP	SPILL-RESISTANT BACKFLOW PREVENTER	WATTS	LF008PCQT-1/2"	HEALTH HAZARD, ANTI-SIPHON, SPILL-RESISTANT BACKFLOW PREVENTER	-	-	1/2"	MAY BE INSTALLED VERTICALLY. REFER TO DETAIL 1/P2	-	ASSE 1056

NOTES:  
1. COORDINATE ROUGH-IN OF ALL PLUMBING FIXTURES W/ARCHITECTURAL DRAWINGS.

OWNER SUPPLIED, CONTRACTOR INSTALLED										
W.H.	WATER HEATER (ELECTRIC)	A.O. SMITH	EJCS-20	(19 GALLONS) 120V 1Ø, 1.65 KW ELEMENT WITH T & P RELIEF VALVE	-	-	3/4"	PIPE DRAIN LINE FROM P & T RELIEF VALVE DOWN IN SHELF PAN. SEE DETAIL 5/P2 & 6/P2	NO SUBSTITUTIONS	CSA, ASME RATED, NAECA
SHELF	WATER HEATER SHELF	HOLDRITE	#40-SWHP-WM	SUPPORTS WATER HEATERS UP TO 20 GALLON OR 300 LBS	-	-	-	PIPE DRAIN LINE FROM SHELF PAN. SEE DETAIL 5/P2 & 6/P2	NO SUBSTITUTIONS	-
T.E.A.	THERMAL EXPANSION ABSORBER	AMTROL	ST-12	-	-	-	-	-	NO SUBSTITUTIONS	-

NOTE: WATER HEATER AND T.E.A. SHALL BE DIRECT ORDERED AND OR RELEASED FROM THE LISTED ELECTRICAL EQUIPMENT DISTRIBUTOR:  
GRAYBAR ELECTRIC CO. INC. 11895 LACKLAND ROAD ST. LOUIS, MO 63146  
GRAYBAR OREILLY TEAM EMAIL: oreilly@graybar.com TOLL FREE: (314) 673-2080



**CASCO**  
PROJECT MANAGERS  
108 Watson Road  
St. Louis, MO 63127  
Phone: (314) 821-1100

REVISIONS:

**O'Reilly AUTO PARTS**

CORPORATE OFFICES  
233 SOUTH PATTERSON  
SPRINGFIELD, MISSOURI 65802  
417-862-2674 PHONE

PROJECT:  
**RE-MODEL O'REILLY AUTO PARTS STORE**  
523 NORTH MILITARY STREET  
LORETTO, TN 38469

**PLUMBING DETAILS**

Professional of Record  
MICHAEL C. GRAPPEL  
Lic. No. 122854  
Exp. Date: 11/30/19  
FEB 16 2018

DRAWN: MAK  
CHECKED: MCG  
DATE: 2-15-2018  
JOB NO.: 319287 (LTO)  
SHEET:

**P2**

Order Plans

WWW.LDPLUMBING.COM

COPYRIGHT 2018 - DESIGNS, DRAWINGS AND SPECIFICATIONS ARE INSTRUMENTS OF SERVICE AND ARE THE PROPERTY OF THE DESIGN PROFESSIONAL. REPRODUCTION PROHIBITED WITHOUT THE EXPRESSED WRITTEN CONSENT OF THE DESIGN PROFESSIONAL.