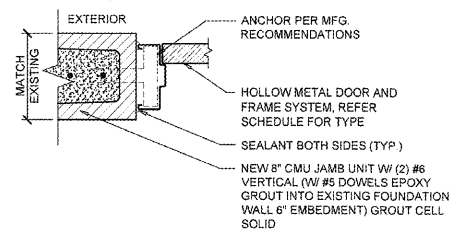
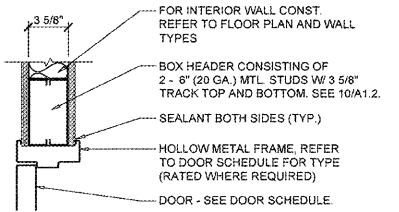


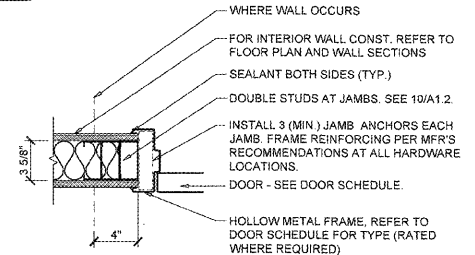
1 HEAD DETAIL
A5.1 SCALE: 1 1/2" = 1'-0"



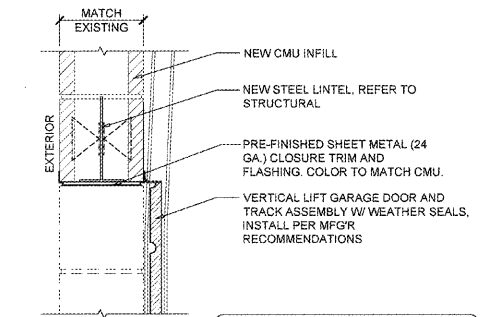
2 JAMB DETAIL
A5.1 SCALE: 1 1/2" = 1'-0"



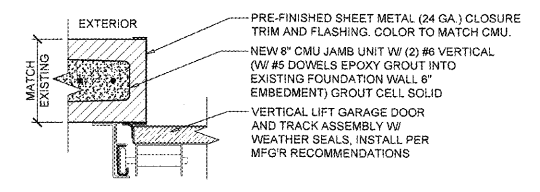
3 HEAD
A5.1 SCALE: 1 1/2" = 1'-0"



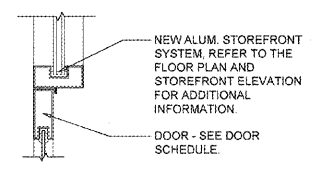
4 JAMB
A5.1 SCALE: 1 1/2" = 1'-0"



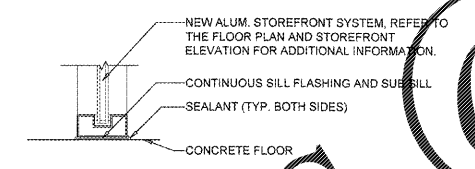
5 HEAD
A5.1 SCALE: 1 1/2" = 1'-0"



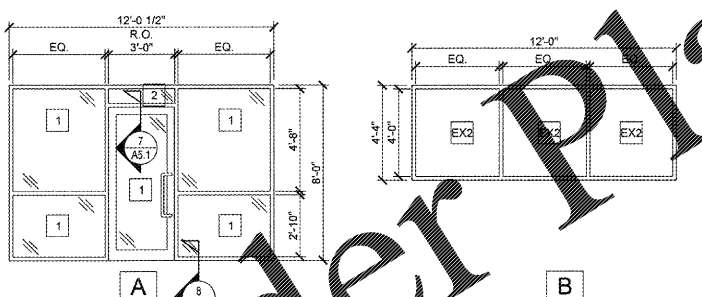
6 JAMB
A5.1 SCALE: 1 1/2" = 1'-0"



7 HEAD
A5.1 SCALE: 1 1/2" = 1'-0"



8 BASE
A5.1 SCALE: 1 1/2" = 1'-0"



9 STOREFRONT ELEVATIONS
A5.1 SCALE: 1/4" = 1'-0"

GLAZING SCHEDULE

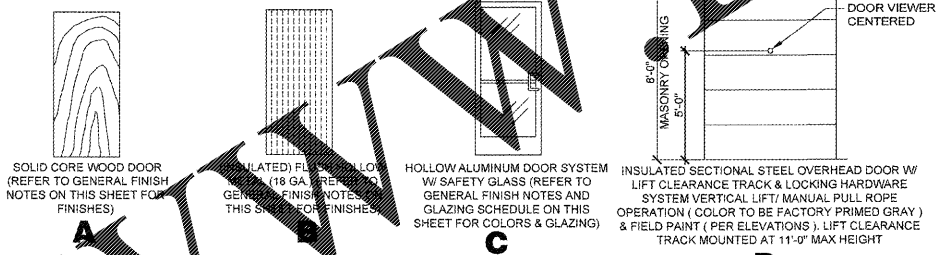
1	INSULATED SAFETY GLAZING (1/4\"/>
2	1\"/>
EX	EXISTING GLAZING

SHADING COEFFICIENT .57

STOREFRONT NOTES:

- FIELD VERIFY FINAL ROUGH OPENING PRIOR TO FABRICATION.
- REFER TO COVER SHEET FOR DESIGN CRITERIA.
- IT IS THE CONTRACTOR'S OPTION TO DIRECT ORDER AND PURCHASE STOREFRONT AND GLASS FROM COULTER & COMPANY.
- SECURITY SHUTTERS MAY BE REQUIRED ON THIS PROJECT. CONTACT YOUR PROJECT ADMINISTRATOR FOR VERIFICATION.
- WHEN THE WIND SPEED IS EQUAL TO OR GREATER THAN 120 MPH, A STORM PANEL SYSTEM WILL BE OWNER FURNISHED AND INSTALLED ON THIS PROJECT. CONTACT YOUR PROJECT ADMINISTRATOR TO VERIFY/COORDINATE.

COULTER & COMPANY
13711 E. 98TH ST. N.
OWASSO, OK 74055
PHONE: (918) 272-4494
FAX: (918) 272-7908
EMAIL: carl@coulterglass.com
CONTACT: CARL YORMAN



10 DOOR ELEVATIONS
A5.1 SCALE: 1/4" = 1'-0"

DOOR SCHEDULE

MK	DOOR				DOOR HARDWARE		FRAME		DETAILS		REMARKS
	SIZE (W x H x D)	TYPE	SWING	MATERIAL	SET #	KEYED	TYPE	MATERIAL	HEAD	JAMB	
1	3'-0" x 7'-0"	C	REFER TO FLOOR PLAN	ALUM.	1	A	1	ALUM.	7/A5.1	8/A5.1(SIM)	REFER TO NOTE 1, 2
2	3'-0" x 7'-0" x 1-3/4"	B	REFER TO FLOOR PLAN	HOLLOW METAL	2	A	2	HOLLOW METAL	1/A5.1	2/A5.1	REFER TO NOTE 2
3	6'-0" x 8'-0"	D	SECTIONAL OVERHEAD	HOLLOW METAL	---	---	---	PER MANUFACTURER STANDARDS AND RECOMMENDATIONS	5/A5.1	6/A5.1	REFER TO NOTE 1, 7
4	3'-0" x 7'-0" x 1 3/4"	A	REFER TO FLOOR PLAN	SOLID WOOD	---	---	2	HOLLOW METAL	3/A5.1	4/A5.1	REFER TO NOTE 1, 4
5	3'-0" x 7'-0" x 1 3/4"	EX'G	REFER TO FLOOR PLAN	EX'G	---	---	---	EX'G	EX'G	EX'G	REFER TO NOTE 1, 4
6	3'-0" x 7'-0" x 1 3/4"	EX'G	REFER TO FLOOR PLAN	EX'G	---	---	---	EX'G	EX'G	EX'G	REFER TO NOTE 1, 4
7	3'-0" x 7'-0" x 1-3/4"	B	REFER TO FLOOR PLAN	HOLLOW METAL	---	---	---	HOLLOW METAL	1/A5.1	2/A5.1	REFER TO NOTE 2
8	3'-0" x 7'-0" x 1-3/4"	A	REFER TO FLOOR PLAN	SOLID WOOD	---	---	---	HOLLOW METAL	1/A5.1	2/A5.1	REFER TO NOTE 2
9	(EX) 3'-0" x 7'-0"	---	---	---	---	---	---	---	---	---	---

NOTES:

- ALL DOORS SHALL BE SHOP PREPARED FOR HARDWARE.
- ALL EXTERIOR DOORS TO BE KEYPAD ALIKE. CONTRACTOR TO FIELD VERIFY AND MATCH CORE OF DOOR MARKED "2".
- EXTERIOR DOOR, FRAME AND HARDWARE SUPPLIED BY TENANT. CONTRACTOR INSTALLED.
- IT IS THE CONTRACTOR'S OPTION TO DIRECT ORDER AND PURCHASE INTERIOR DOOR, HOLLOW METAL FRAMES AND HARDWARE THROUGH LOCKNET.
- FRAME FOR INDICATED DOOR TO HAVE 4" HEAD.
- FIRE RATINGS/UL LISTED. HARDWARE SHALL BE UNDERWRITERS' LABORATORY LISTED. WHERE REQUIRED FOR THE CORRESPONDING FIRE-RATED DOOR/FRAME ASSEMBLY.
- G.C. TO VERIFY EXISTING OVERHEAD CLEARANCES PRIOR TO ORDERING DOOR ASSEMBLY.

LOCKNET
100 COURCHELLE DRIVE
NICHOLASVILLE, KY 40356
CONTACT: PAM PEEL

PHONE 800-887-4307 EXT. 133
FAX 859-881-5499
EMAIL: construction@locknet.com

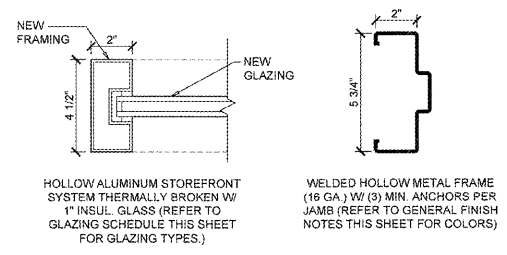
GENERAL FINISH NOTES FOR INTERIOR DOORS & FRAMES:

A. WOOD DOORS SHALL BE CUSTOM GRADE ROTARY SLICED WHITE OAK BIRCH WITH FACTORY PRE-FINISH. FINISH SHALL BE EQUAL TO GRAHAM 300-MEDIUM BROWN. ANY VARIANCE MUST BE APPROVED BY O'REILLY AUTO PARTS.

B. INTERIOR HOLLOW METAL FRAMES SHALL BE SHOP PRIMED AND FIELD PAINTED WITH 2 COATS SEMI-GLOSS ENAMEL GLIDDEN "O'REILLY GREEN".

HARDWARE SCHEDULE

NO.	PART	DESCRIPTION	MANUFACTURER
SET NUMBER 1 (DOOR MARK 1)			
1	CYLINDER	20-062 X US26D - "E" KEYWAY (REMOVABLE CORE) KEYPED EXTERIOR SIDE	SCHLAGE
REQUIRED HARDWARE FURNISHED WITH STOREFRONT DOOR SYSTEM			
1	DEADBOLT	MS1850S X US26	ADAMS RITE
1	DEADLOCK LEVER	4560 X US28	ADAMS RITE
1	STRIKE	MS4902 X US28	ADAMS RITE
1	CLOSER	4040BC X AL. (ADJ. TO 5#)	LCN
1	PAIR OFFSET PIVOTS	195/188 X US26D	RIXON
1	SET PUSH / PULLS	CO-12/CP1 X US26D	KAWNEER
1	SET WEATHERSTRIP	WOOL PILE, CONT., REPLACEABLE	PEMKO
1	SWEEP	RETRACTING RESILIENT SEAL TYPE	PEMKO
1	THRESHOLD	ANSI AND ADA COMPLIANT	PEMKO
SET NUMBER 2 (DOOR MARK 2)			
1.5	CONTINUOUS HINGE	780-112HD	HANGER
1	EXIT DEVICE	9300 B 486 / 689 - PRT03 630 THRU-BOLTED ITEM W/ SEX BOLTS	DORMA
1	RIM CYLINDER	20-057 RIM CYLINDER IC, W/ SCHLAGE E KEYWAY (LARGE FORMAT) - 26D - W/ 2 SECURITY KEYS AND 1 CORE KEY PER LOCK. 1 BITTED	SCHLAGE
1	DOOR CLOSER	8616DST HD GR 1, ADJ #3 x 688 FINISH W/COVER THRU-BOLTED ITEM W/SEX BOLT INCLUDES HOLD OPEN ARM W/ THUMBTURN	DORMA
1	LATCHGUARD	LG100Z/SF STRAIGHT W/PIN W/ SEX BOLTS	LATCHGUARD
1	KICKPLATE	8 X 34 X .050 SS FINISH	HAGER
1	THRESHOLD	36" ALUM MILL ADA COMPLIANT	POSTEL
1	SWEEP	CONCEALED ALUM MILL VINYL BULB	POSTEL
1	SET WEATHERSTRIP	JAMBS: KERFED QEBD-500 HEADER: ADHESIVE QDST-675	SCHLEGEL
1	DOOR VIEWER	698B-190 DEGREE WIDE ANGLE - 26D	IVES
SET NUMBER 3 (DOOR MARK 3)			
REQUIRED HARDWARE FURNISHED WITH OVERHEAD DOOR SYSTEM (LOOKING FROM INSIDE ONLY)			
SET NUMBER 4 (DOOR MARK 4)			
1	OFFICE LOCK SET	AU5307LN X US26D	YALE
1	WALL BUMPER	409 X US26D	ROCKWOOD
1.5	PAIR HINGES	881279 X 4.5 X 4.5 X US26D	HAGAR
SET NUMBER 5 (DOOR MARK 5 AND 6)			
1.5	PAIR HINGES	881279 X 4.5 X 4.5 X US26D	HAGAR
1	PRIVACY LOCKSET	AU5302LN X US26D	YALE
1	WALL BUMPER	409 X US26D AT DOOR NUMBER 6	ROCKWOOD
1	FLOOR STOP	440 X US26D AT DOOR NUMBER 5 (MOUNT AS CLOSE TO CORNER AS POSSIBLE)	ROCKWOOD
SET NUMBER 6 (DOOR MARK 7)			
1.5	PAIR HINGES	ECBB1100 4.5" X 4.5" NRP US26D	HAGAR
1	EXIT DEVICE	8300 B 486 / 688 EXIT ONLY	DORMA
1	DOOR CLOSER	5300 MLT ADJ 2-6 ALUM - GRADE 1 CLOSER WITH BACK CHECK - WITH COVER THRU-BOLTED ITEMS W/ SEX BOLTS	HAGAR
1	LATCH GUARD	LG100Z/SF STRAIGHT W/PIN W/ SEX BOLTS	LATCHGUARD
1	THRESHOLD	36" ALUM MILL ADA COMPLIANT	POSTEL
1	SWEEP	CONCEALED ALUM MILL VINYL BULB	POSTEL
1	SET WEATHERSTRIP	JAMBS: KERFED QEBD - 500 HEADER: ADHESIVE QDST - 675	SCHLEGEL



11 FRAME TYPES
A5.1 SCALE: 3" = 1'-0"

CASCO
PROJECT MANAGERS
2877 Johnson Road
St. Louis, MO 63127
Phone: (314) 821-1100
CASCO OVERSEAS CORPORATION
ARCHITECTURAL 2929 CODE 1264

REVISIONS:

O'Reilly AUTO PARTS
CORPORATE OFFICES
233 SOUTH PATTERSON
SPRINGFIELD, MISSOURI 65802
417-862-2674 PHONE

PROJECT:
RE-MODEL O'REILLY AUTO PARTS STORE
523 NORTH MILITARY STREET
LORETTO, TN 38469
DOOR SCHEDULE & DETAILS

Professional of Record
Exp. Date: 03/31/18
License #102268

DRAWN: VVP
CHECKED: MGC
DATE: 2-15-2018
JOB NO.: 319287 (LTO)
SHEET:

A5.1

Order Plans @

WWW.IDLINE.COM

COPYRIGHT 2018 - DESIGNS, DRAWINGS AND SPECIFICATIONS ARE INSTRUMENTS OF SERVICE AND ARE THE PROPERTY OF THE DESIGN PROFESSIONAL. REPRODUCTION PROHIBITED WITHOUT THE EXPRESSED WRITTEN CONSENT OF THE DESIGN PROFESSIONAL.