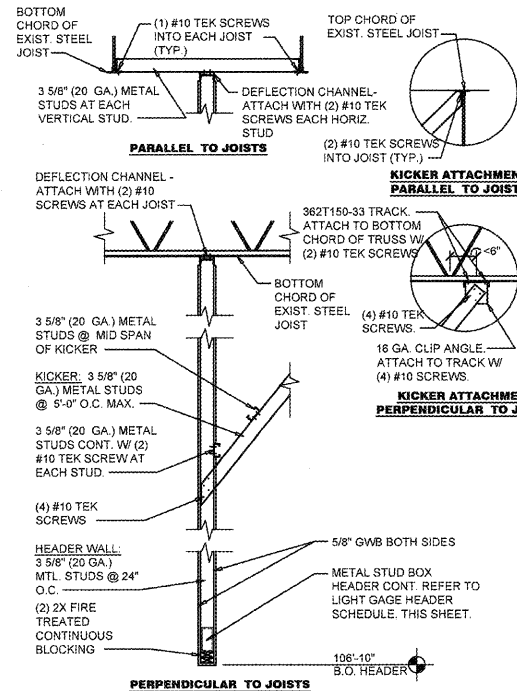
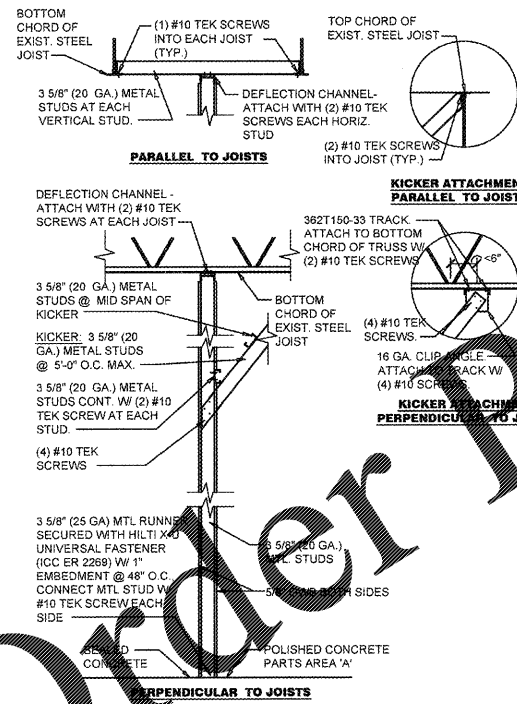


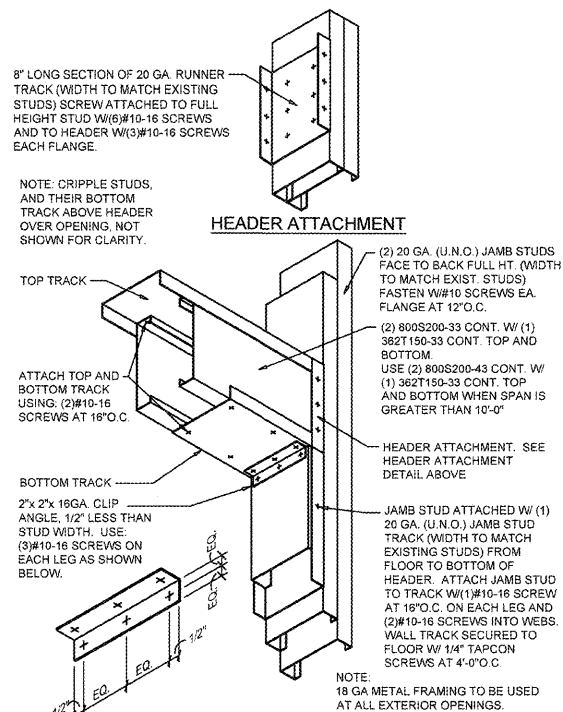
LIGHT GAGE HEADERS	
FOR SPANS...	USE...
UP TO 14 FT.	(2) 800S162-33
14 FT. TO 16 FT.	(2) 800S162-43
16 FT. TO 20 FT.	(2) 800S162-54
20 FT. TO 26 FT.	(2) 1000S162-54



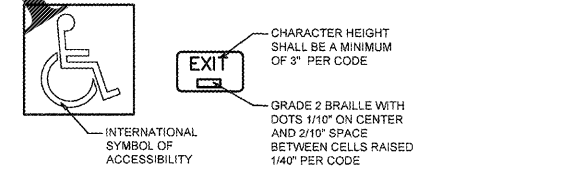
**1 HEADER WALL SECTION**  
A4.3 SCALE: 1/2" = 1'-0"



**2 INTERIOR WALL SECTION**  
A4.3 SCALE: 1/2" = 1'-0"



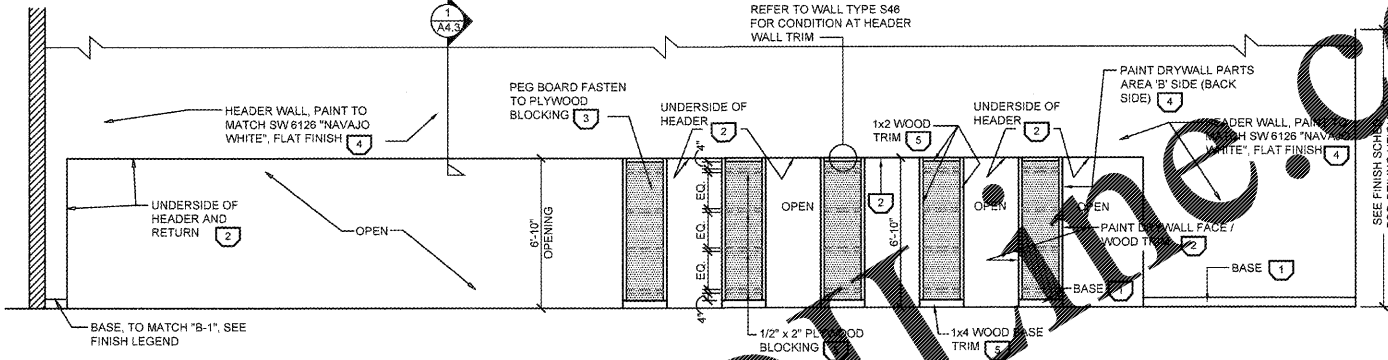
**3 HEADER ATTACHMENT DETAIL**  
A4.3 SCALE: 1 1/2" = 1'-0"



**4 ACCESSIBLE SIGNAGE**  
A4.3 SCALE: 1 1/2" = 1'-0"

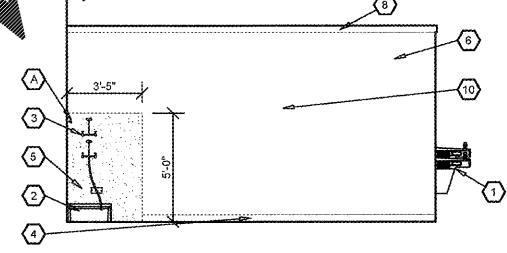
**NOTES:**  
1. SIGNS SHALL CONFORM TO ANSI OR LOCAL ACCESSIBILITY GUIDELINES WHICHEVER IS MORE STRINGENT.  
2. ALL BUILDINGS AND ENTRANCES THAT ARE ACCESSIBLE AND USABLE BY PERSONS WITH DISABILITIES SHALL BE IDENTIFIED WITH A MINIMUM OF ONE INTERNATIONAL SYMBOL OF ACCESSIBILITY.  
3. G.C. TO PROVIDE TACTILE "EXIT" SIGNS AT ALL GRADE LEVEL EXIT DOORS PER CODE.  
4. SIGNS TO BE INSTALLED ON THE LATCH SIDE OF THE DOOR, OR IF NO SPACE ON THE NEAREST WALL PREFERABLY ON THE RIGHT. SIGNAGE SHALL HAVE NON GLARE FINISH W/ A CONTRASTING BACKGROUND. SEE A1.1 FOR LOCATION OF SIGNAGE.

HEADER WALL LEG SUPPORT FINISHES			
1	BASE - "B-1", SEE FINISH LEGEND ON SHEET A1.2 - PROVIDE BASE ON BACK SIDE AND BOTH ENDS, NO BASE BELOW PEG BOARD.	4	PAINT: SW6126 "NAVAJO WHITE", FLAT FINISH.
2	PAINT: SW6468 "HUNT CLUB GREEN", FLAT FINISH - BOTH DRYWALL ENDS INCLUDING OUTSIDE EDGE OF WOOD TRIM.	5	PAINT: SW6258 "TRICORN BLACK", FLAT FINISH - WOOD EXPOSED SURFACES.
3	PAINT: SW6258 "TRICORN BLACK", FLAT FINISH - EXPOSED PEGBOARD SURFACES.		



**5 FLOOR TO CEILING HEADER ELEVATION**  
A4.3 SCALE: 1/4" = 1'-0"

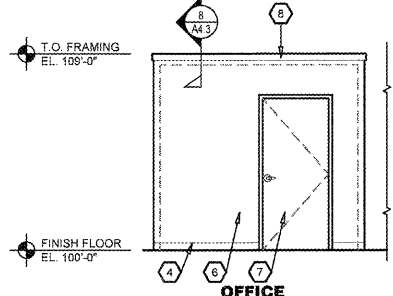
- KEY NOTES:**
- EXISTING HIGH / LOW DRINKING FOUNTAIN
  - FLOOR MOUNTED JANITOR SINK
  - EYE WASH STATION - INSTALL WITH TOP AT 48" ABOVE FINISH FLOOR.
  - BASE, REFER TO FINISH SCHEDULE.
  - SANITARY WALL PANEL SYSTEM, PROVIDE TRIM AND EDGE MOLDING AROUND PERIMETER.
  - PAINT, REFER TO FINISH SCHEDULE.
  - DOOR, REFER TO DOOR AND FINISH SCHEDULES.
  - WOOD TRIM, PAINT.
  - EXISTING SANITARY WALL
  - PATCH AND REPAIR WALL AS REQUIRED AFTER DEMO AND PLUMBING FOR MOP SINK INSTALLATION.



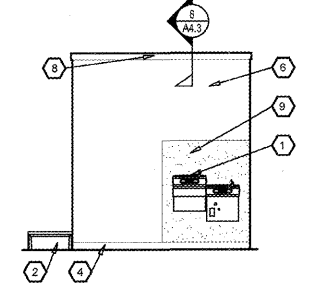
**6 ELEVATION**  
A4.3 SCALE: 1/4" = 1'-0"

ACCESSORY SCHEDULE					
MK	DESCRIPTION	MANUFACTURER	SERIES / MODEL	MOUNTING LOCATION	ACCESSORY NOTES
A	MOP HANGER	REFER TO PLUMBING DRAWINGS	REFER TO PLUMBING DRAWINGS	60" A.F.F. TO CENTER	REFER TO PLUMBING DRAWINGS
B	EX DOOR SIGN (MEN)	---	---	---	---
C	EX DOOR SIGN (WOMEN)	---	---	---	---

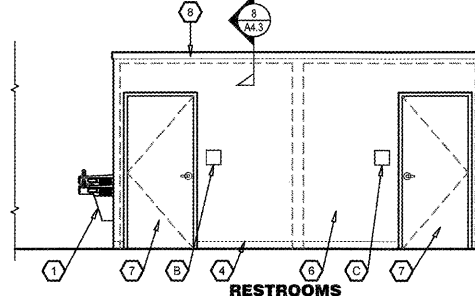
**ACCESSORY GENERAL NOTES:**  
1. CONTRACTOR TO PROVIDE FIRE TREATED WOOD BLOCKING FOR INSTALLATION OF TOILET ACCESSORIES, INCLUDING OWNER FURNISHED AND INSTALLED ACCESSORIES. COORDINATE REQUIREMENTS WITH OWNER.



**7 ELEVATION**  
A4.3 SCALE: 1/4" = 1'-0"



**8 ELEVATION**  
A4.3 SCALE: 1/4" = 1'-0"



**9 ELEVATION**  
A4.3 SCALE: 1/4" = 1'-0"

**RESTROOMS**

**CASCO**  
PROJECT MANAGERS  
1500 Patton Road  
St. Louis, MO 63127  
Phone: (314) 821-1100  
CASCO UNIVERSAL CORPORATION  
ARCHITECTURAL 2828 CODE 1204

**O'Reilly AUTO PARTS**  
CORPORATE OFFICES  
233 SOUTH PATTERSON  
SPRINGFIELD, MISSOURI 65012  
417-862-2674 PHONE

**PROJECT: RE-MODEL O'REILLY AUTO PARTS STORE**  
523 NORTH MILITARY STREET  
LORETTO, TN 38469  
**INTERIOR ELEVATIONS & SECTIONS**

James A. Schmitt  
License #102092  
Exp. Date: 6/31/16  
Professional of Record

DRAWN: VVP  
CHECKED: MGC  
DATE: 2-15-2018  
JOB NO.: 319287 (LTO)  
SHEET:

**A4.3**

© COPYRIGHT 2018 - DESIGNS, DRAWINGS AND SPECIFICATIONS ARE INSTRUMENTS OF SERVICE AND ARE THE PROPERTY OF THE DESIGN PROFESSIONAL. REPRODUCTION PROHIBITED WITHOUT THE EXPRESSED WRITTEN CONSENT OF THE DESIGN PROFESSIONAL.