

### EQUIPMENT SUPPORT NOTE

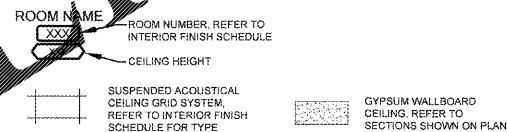
- DO NOT PUNCH OR USE ROOF DECK ABOVE TO SUPPORT ANY ITEMS SUCH AS, CEILING GRID, MECHANICAL EQUIPMENT, ELECTRICAL EQUIPMENT, LIGHT FIXTURES, ETC. SHALL BE SUPPORTED FROM STRUCTURAL ROOF SUPPORT MEMBERS. GENERAL CONTRACTOR IS RESPONSIBLE TO NOTIFY ALL SUB-CONTRACTORS PRIOR TO WORK TO BE PERFORMED.
- ALL LIGHTS MUST BE PROPERLY INSTALLED AND SUPPORTED TO STRUCTURAL ROOF SUPPORT MEMBERS ABOVE CEILING AND ATTACHED DIAGONALLY ON LIGHT FIXTURE. DO NOT SUPPORT FROM CEILING GRID.

### GENERAL NOTES

- REFER TO ARCHITECTURAL GENERAL SPECIFICATIONS FOR ADDITIONAL REQUIREMENTS.
- MECHANICAL EQUIPMENT SHOWN ON THE REFLECTED CEILING PLAN ARE FOR ARCHITECTURAL LOCATIONS ONLY. REFER TO MECHANICAL DRAWINGS FOR TYPES, SIZES, DISTRIBUTION, CONNECTIONS, AND ALL OTHER REQUIREMENTS.
- LIGHTING FIXTURES SHOWN ON THE REFLECTED CEILING PLAN ARE FOR ARCHITECTURAL LOCATIONS, QUANTITIES, AND GENERAL FIXTURE TYPE ONLY. REFER TO ELECTRICAL DRAWINGS FOR EXACT FIXTURE TYPE AND CIRCUITING.
- CONTRACTOR SHALL COORDINATE THE INSTALLATION OF THE VARIOUS TRADE ITEMS WITHIN THE SPACE ABOVE ALL CEILINGS (INCLUDING, BUT NOT LIMITED TO: STRUCTURAL MEMBERS, MECHANICAL DUCTS AND INSULATION CONDUITS, RACEWAYS, SPRINKLER SYSTEM, LIGHT FIXTURES, CEILING SYSTEMS, AND ANY SPECIAL STRUCTURAL SUPPORTS REQUIRED) AND SHALL BE RESPONSIBLE FOR MAINTAINING THE FINISH CEILING HEIGHT ABOVE THE FINISH FLOOR INDICATED ON THE DRAWING.
- REFER TO INTERIOR FINISH SCHEDULE FOR CEILING HEIGHTS.
- LIGHT FIXTURES SHALL NOT BE INSTALLED ABOVE ANY SPRINKLER BRANCH LINES.

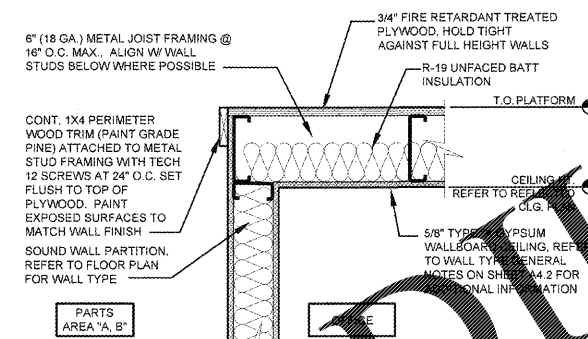
### SYMBOLS LEGEND

- DO NOT PUNCH OR USE ROOF DECK ABOVE TO SUPPORT ANY ITEMS SUCH AS, CEILING GRID, MECHANICAL EQUIPMENT, ELECTRICAL EQUIPMENT, LIGHT FIXTURES, ETC. SHALL BE SUPPORTED FROM STRUCTURAL ROOF SUPPORT MEMBERS. GENERAL CONTRACTOR IS RESPONSIBLE TO NOTIFY ALL SUB-CONTRACTORS PRIOR TO WORK TO BE PERFORMED.
- ALL LIGHTS MUST BE PROPERLY INSTALLED AND SUPPORTED TO STRUCTURAL ROOF SUPPORT MEMBERS ABOVE CEILING AND ATTACHED DIAGONALLY ON LIGHT FIXTURE. DO NOT SUPPORT FROM CEILING GRID.
- REFER TO MECHANICAL AND ELECTRICAL DRAWINGS FOR ADDITIONAL EQUIPMENT.



### KEY NOTES

- OUTLINE OF ROOF TOP UNIT, REFER TO MECHANICAL DRAWINGS FOR LOCATION AND ADDITIONAL INFORMATION.



**1 REFLECTED CEILING PLAN**  
**A1.3** SCALE: 1/8" = 1'-0"

**2 WALL / CLG. SECTION**  
 SCALE: 1/8" = 1'-0"

**CASCO**  
 PROJECT MANAGERS  
 10877 Watson Road  
 St. Louis, MO 63127  
 Phone: (314) 821-1100  
 CASCO INCORPORATED CORPORATION  
 ARCHITECTURAL 2929 CODE 1204

REVISIONS:

**O'Reilly AUTO PARTS**

CORPORATE OFFICES  
 233 SOUTH PATTERSON  
 SPRINGFIELD, MISSOURI 65802  
 417-882-2874 PHONE

PROJECT:  
**RE-MODEL O'REILLY AUTO PARTS STORE**  
**523 NORTH MILITARY STREET**  
**LORETTO, TN 38469**

**REFLECTED CEILING PLAN**

Professional of Record  
 James A. Schmidt  
 License #102092  
 Exp. Date: 8/31/18  
 FEB 15 2018

DRAWN: VVP  
 CHECKED: MGC  
 DATE: 2-15-2018  
 JOB NO.: 319287 (LTO)  
 SHEET:

**A1.3**

COPYRIGHT 2018 - DESIGNS, DRAWINGS AND SPECIFICATIONS ARE INSTRUMENTS OF SERVICE AND ARE THE PROPERTY OF THE DESIGN PROFESSIONAL. REPRODUCTION PROHIBITED WITHOUT THE EXPRESSED WRITTEN CONSENT OF THE DESIGN PROFESSIONAL.