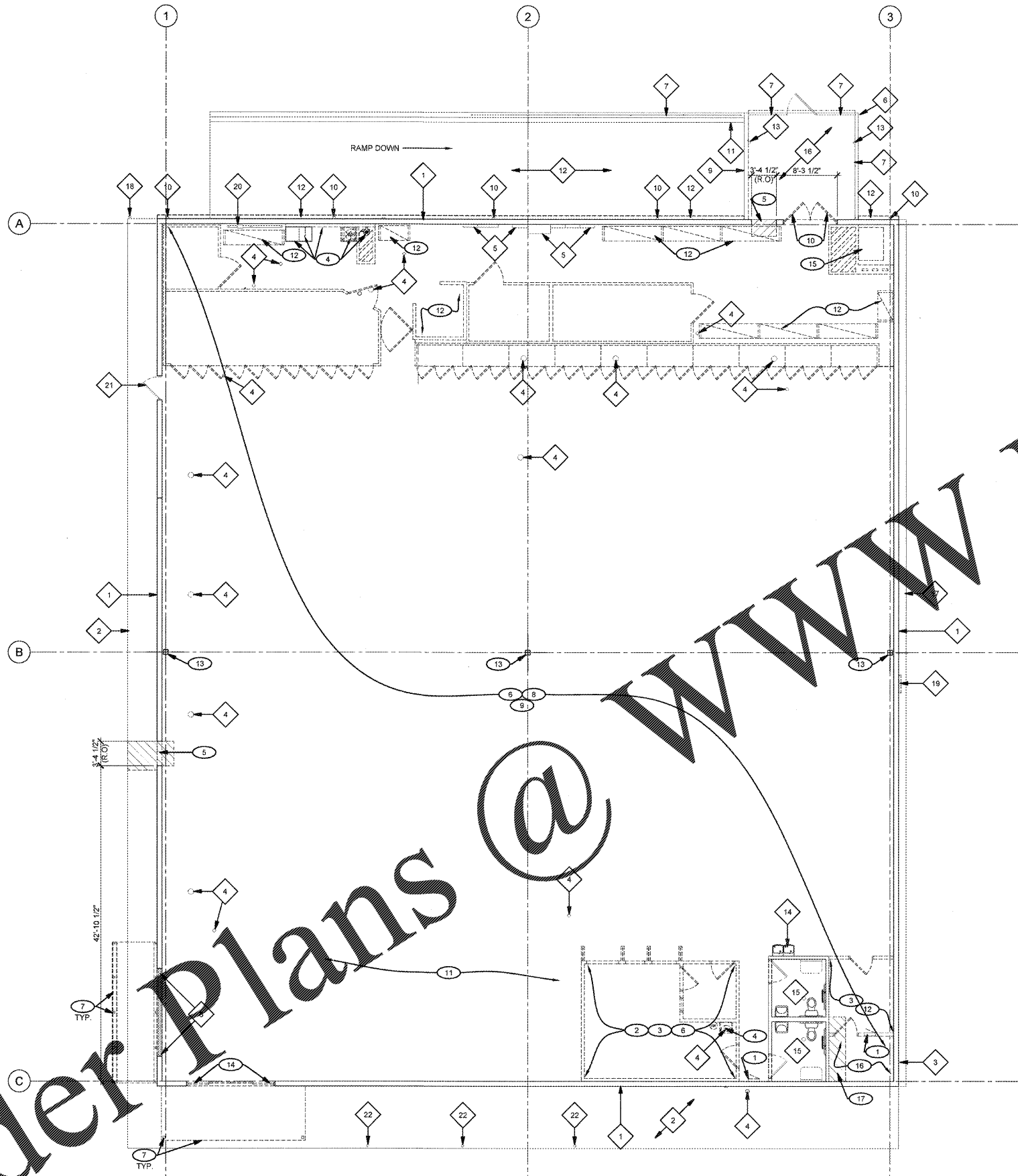


Order Plans @



1 DEMOLITION FLOOR PLAN
D1.1 SCALE: 1/8" = 1'-0"

GENERAL DEMOLITION NOTES:

- REFER TO ARCHITECTURAL GENERAL SPECIFICATIONS FOR ADDITIONAL INFORMATION.
- CONCRETE SLAB SAW CUT NOTE:** PRIOR TO MODIFYING THE EXISTING CONCRETE SLAB CONSTRUCTION IN ANY WAY, INCLUDING BUT NOT LIMITED TO CUTTING, DRILLING, OR ROUTING, THE GENERAL CONTRACTOR SHALL OBSERVE EXISTING CONCRETE SLAB(S) THROUGHOUT THE PLANNED AREA OF WORK AND SUBMIT EVIDENCE TO THE PROJECT ARCHITECT/ENGINEER OF RECORD ILLUSTRATING THE TYPE(S) OF SLAB CONSTRUCTION I.E. "SLAB ON GRADE," "REINFORCED STRUCTURAL CONCRETE," ETC. THE SLAB CONSTRUCTION SHALL NOT BE MODIFIED UNTIL THE ARCHITECT/ENGINEER OF RECORD PROVIDES RESPECTIVE WRITTEN DIRECTIVE.
- EXISTING INSULATION:** UPON COMPLETION OF DEMOLITION, THE GENERAL CONTRACTOR SHALL CONTACT THE PROFESSIONAL OF RECORD IMMEDIATELY IF KRAFT-FACED INSULATION IS DISCOVERED.
- ADA ACCESSIBLE ENTRY / EXIT DOOR NOTE:** THE GENERAL CONTRACTOR SHALL FIELD VERIFY EXISTING GRADES AND SLOPES AT ALL EXISTING AND NEW EXTERIOR DOOR LOCATIONS. IF CONCRETE WALKWAY EXIST, THE GENERAL CONTRACTOR TO CONFIRM PRIOR TO DEMOLITION THAT THE NEW DOOR SILL LOCATION IS FLUSH WITH EXISTING WALKWAY / FINISH FLOOR AND SLOPES DO NOT EXCEED 2% IN ALL DIRECTIONS. THE GENERAL CONTRACTOR TO REMOVE AND REPLACE PART CONCRETE WALKWAY AS REQUIRED TO MEET THE ABOVE CRITERIA. IF THE ABOVE CRITERIA CANNOT BE MET DUE TO FIELD CONDITIONS, THE GENERAL CONTRACTOR IS TO CONTACT THE ARCHITECT FOR POSSIBLE NEW LOCATION OF DOOR OPENING. WHERE CONCRETE WALKWAY DOES NOT EXIST, PROVIDE A 6'-0" (MIN.) LANDING EXTENDING OUT FROM BUILDING AND 24" (MIN.) FULL SIDE OF DOOR AND 1'-0" AT HINGE SIDE OF DOOR WITH SLOPES NOT TO EXCEED 2% IN ALL DIRECTIONS UNLESS NOTED OTHERWISE.
- REMOVE ALL EXISTING SITE CONSTRUCTION AND DEBRIS MATERIALS UNLESS OTHERWISE NOTED.
- SEE M.E.P. AND STRUCTURAL DRAWINGS FOR ADDITIONAL DEMOLITION SCOPE AND REQUIREMENTS.

EXISTING TO REMAIN KEYED NOTES

- | | |
|---|---|
| 1. EXTERIOR SMOOTH FACE C.M.U. | 13. 3" SQUARE TUBE COLUMN |
| 2. CONCRETE SIDEWALK. PATCH AND REPAIR AS REQUIRED. | 14. HI-LOW DRINKING FOUNTAIN |
| 3. TELECOM CONNECTION | 15. RESTROOMS INCLUDING PLUMBING FIXTURES, ACCESSORIES, DRAIN, AND BASE BOARD |
| 4. DOOR DRAIN CLEAN-OUT. SEE PLUMBING SCHEDULES FOR ADDITIONAL INFORMATION. | 16. CONCRETE SLAB |
| 5. ELECTRICAL PANELS | 17. FOUNDATION FOOTING |
| 6. CANOPY LINE | 18. CONCRETE BOLLARD |
| 7. METAL FENCE | 19. GAS METER |
| 8. INSULATED STOREFRONT SYSTEM | 20. INCOMING WATER/OVERFLOW |
| 9. DOCK LEVELER | 21. HOLLOW METAL DOOR |
| 10. DOWNSPOUT | 22. CONCRETE BOLLARD W/ HANDICAP SIGN |
| 11. STORM DRAIN | |
| 12. 4'-6" RECESSED CONC. TRUCK WELL W/ CONC. RETAINING WALL AND CURBS | |

DEMOLITION KEYED NOTES

- | | |
|---|--|
| 1. REMOVE EXISTING ELECTRICAL EQUIPMENT. REFER TO ELECTRICAL DRAWINGS FOR ADDITIONAL INFORMATION. | 8. REMOVE EXISTING REFRIGERATORS AND FREEZERS AND ALL EQUIPMENT THAT GOES WITH THEM. |
| 2. REMOVE CARPET FLOORING IN ITS ENTIRETY. PREPARE CONCRETE SURFACE TO RECEIVE SCHEDULED FLOOR FINISH. SEE ROOM FINISH SCHEDULE. | 9. REMOVE EXISTING FIXTURES THROUGHOUT THE BUILDING. PATCH AND REPAIR FLOORING AS REQUIRED TO MATCH ADJACENT SURFACE SCHEDULE. |
| 3. REMOVE CEILING SYSTEM IN ITS ENTIRETY INCLUDING BUT NOT LIMITED TO: CEILING SYSTEM, CEILING SUPPORTS, LIGHT FIXTURES, DIFFUSERS, ETC. SEE M.E.P. DRAWINGS FOR ADDITIONAL REQUIRED AREAS TO BE DEMOLISHED. | 10. REMOVE EXISTING DOOR AND FRAME IN ITS ENTIRETY. PREPARE OPENING FOR NEW INFILL AND OVERHEAD DOOR. |
| 4. REMOVE EXISTING PLUMBING FIXTURES AND ACCESSORIES COMPLETE. REMOVE FURRE-OUT. REFER TO PLUMBING DRAWINGS FOR ADDITIONAL INFORMATION. | 11. REMOVE EXISTING CHECK-OUT COUNTERS IN THEIR ENTIRETY. PATCH AND REPAIR FLOORING AS REQUIRED TO MATCH ADJACENT SURFACE. REMOVE ELECTRICAL AND DATA CABLES TO SOURCE. REMOVE POWER COLUMN. |
| 5. [Hatched pattern] SAW CUT AND REMOVE PORTION OF EXISTING EXTERIOR C.M.U. WALL AND CONCRETE FLOOR SLAB / SIDEWALK AS REQUIRED FOR INSTALLATION OF NEW HOLLOW METAL DOOR. SEE FLOOR PLAN AND STRUCTURAL DRAWINGS FOR ADDITIONAL INFORMATION. | 12. REMOVE SHELVING. |
| 6. REMOVE EXISTING PARTITION WALLS AND DOORS COMPLETELY. REFER TO A1.1 FOR ADDITIONAL INFORMATION. | 13. EXISTING STEEL COLUMN. PREPARE SURFACE TO RECEIVE NEW PAINT FINISH |
| 7. REMOVE EXISTING CANOPY AND SUPPORT STRUCTURE ENTIRELY. PATCH AND REPAIR SURFACE TO MATCH ADJACENT SURFACE. | 14. REMOVE ENTRY SLIDERS. PREPARE FOR NEW ALUMINUM ENTRY DOOR WITH STOREFRONT. |
| | 15. REMOVE BALER |
| | 16. REMOVE EQUIPMENT, ELECTRICAL AND DATA CABLES TO SOURCE. |
| | 17. [Hatched pattern] SAW CUT AND REMOVE PORTION OF EXISTING CONCRETE FLOOR SLAB AS REQUIRED FOR INSTALLATION OF NEW PLUMBING - SEE PLUMBING DRAWINGS. |

CASCO
 PROJECT MANAGERS
 1877 Wilson Road
 St. Louis, MO 63127
 Phone: (314) 821-1100
 CASCO UNIVERSIFIED CORPORATION
 ARCHITECTURAL 2629 CODE 1204

REVISIONS:

| | |
|--|--|
| | |
| | |
| | |
| | |

O'Reilly AUTO PARTS
 CORPORATE OFFICES
 233 SOUTH PATTERSON
 SPRINGFIELD, MISSOURI 65802
 417-862-2674 PHONE

PROJECT:
RE-MODEL O'REILLY AUTO PARTS STORE
523 NORTH MILITARY STREET
LORETTO, TN 38469
DEMOLITION PLAN

FEB 1 & 2018

| | |
|----------|--------------|
| DRAWN: | VVP |
| CHECKED: | MGC |
| DATE: | 2-15-2018 |
| JOB NO.: | 319287 (LTO) |
| SHEET: | |

D1.1

COPYRIGHT 2018 - DESIGNS, DRAWINGS AND SPECIFICATIONS ARE INSTRUMENTS OF SERVICE AND ARE THE PROPERTY OF THE DESIGN PROFESSIONAL. REPRODUCTION PROHIBITED WITHOUT THE EXPRESSED WRITTEN CONSENT OF THE DESIGN PROFESSIONAL.