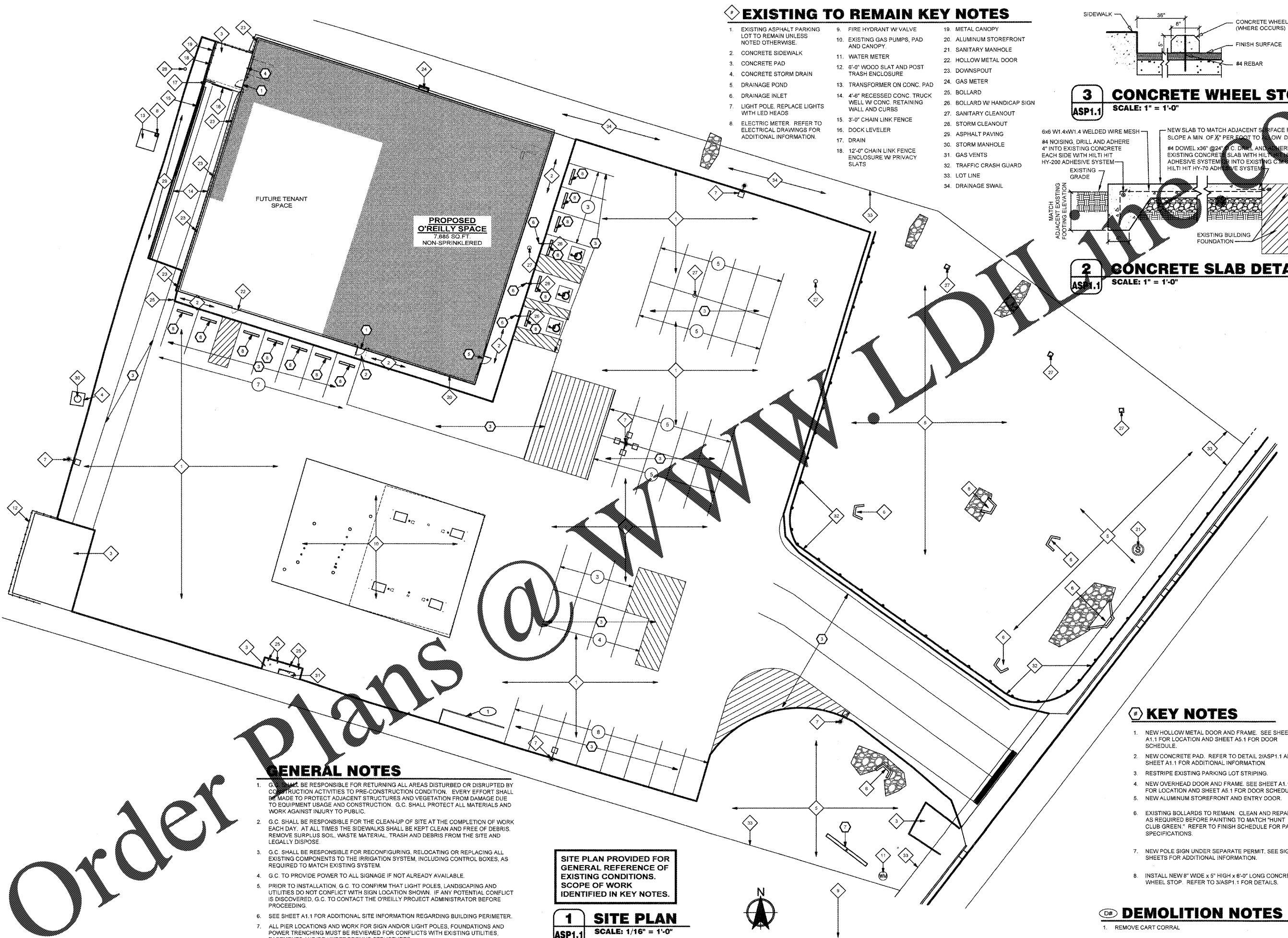


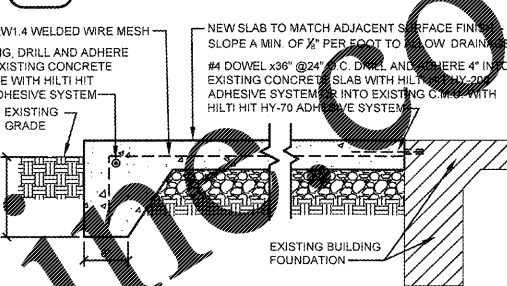
Order Plans



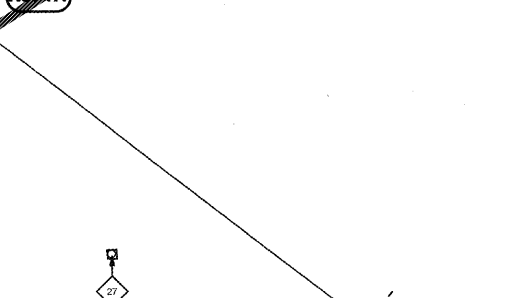
EXISTING TO REMAIN KEY NOTES

- | | | |
|---|---|------------------------------|
| 1. EXISTING ASPHALT PARKING LOT TO REMAIN UNLESS NOTED OTHERWISE. | 9. FIRE HYDRANT W/ VALVE | 19. METAL CANOPY |
| 2. CONCRETE SIDEWALK | 10. EXISTING GAS PUMPS, PAD AND CANOPY. | 20. ALUMINUM STOREFRONT |
| 3. CONCRETE PAD | 11. WATER METER | 21. SANITARY MANHOLE |
| 4. CONCRETE STORM DRAIN | 12. 8'-0" WOOD SLAT AND POST TRASH ENCLOSURE | 22. HOLLOW METAL DOOR |
| 5. DRAINAGE POND | 13. TRANSFORMER ON CONC. PAD | 23. DOWNSPOUT |
| 6. DRAINAGE INLET | 14. 4'-6" RECESSED CONC. TRUCK WELL W/ CONC. RETAINING WALL AND CURBS | 24. GAS METER |
| 7. LIGHT POLE, REPLACE LIGHTS WITH LED HEADS | 15. 3'-0" CHAIN LINK FENCE | 25. BOLLARD |
| 8. ELECTRIC METER, REFER TO ELECTRICAL DRAWINGS FOR ADDITIONAL INFORMATION. | 16. DOCK LEVELER | 26. BOLLARD W/ HANDICAP SIGN |
| | 17. DRAIN | 27. SANITARY CLEANOUT |
| | 18. 12'-0" CHAIN LINK FENCE ENCLOSURE W/ PRIVACY SLATS | 28. STORM CLEANOUT |
| | | 29. ASPHALT PAVING |
| | | 30. STORM MANHOLE |
| | | 31. GAS VENTS |
| | | 32. TRAFFIC CRASH GUARD |
| | | 33. LOT LINE |
| | | 34. DRAINAGE SWAIL |

3 CONCRETE WHEEL STOP
SCALE: 1" = 1'-0"



2 CONCRETE SLAB DETAIL
SCALE: 1" = 1'-0"



GENERAL NOTES

- G.C. SHALL BE RESPONSIBLE FOR RETURNING ALL AREAS DISTURBED OR DISRUPTED BY CONSTRUCTION ACTIVITIES TO PRE-CONSTRUCTION CONDITION. EVERY EFFORT SHALL BE MADE TO PROTECT ADJACENT STRUCTURES AND VEGETATION FROM DAMAGE DUE TO EQUIPMENT USAGE AND CONSTRUCTION. G.C. SHALL PROTECT ALL MATERIALS AND WORK AGAINST INJURY TO PUBLIC.
- G.C. SHALL BE RESPONSIBLE FOR THE CLEAN-UP OF SITE AT THE COMPLETION OF WORK EACH DAY. AT ALL TIMES THE SIDEWALKS SHALL BE KEPT CLEAN AND FREE OF DEBRIS. REMOVE SURPLUS SOIL, WASTE MATERIAL, TRASH AND DEBRIS FROM THE SITE AND LEGALLY DISPOSE.
- G.C. SHALL BE RESPONSIBLE FOR RECONFIGURING, RELOCATING OR REPLACING ALL EXISTING COMPONENTS TO THE IRRIGATION SYSTEM, INCLUDING CONTROL BOXES, AS REQUIRED TO MATCH EXISTING SYSTEM.
- G.C. TO PROVIDE POWER TO ALL SIGNAGE IF NOT ALREADY AVAILABLE.
- PRIOR TO INSTALLATION G.C. TO CONFIRM THAT LIGHT POLES, LANDSCAPING AND UTILITIES DO NOT CONFLICT WITH SIGN LOCATION SHOWN. IF ANY POTENTIAL CONFLICT IS DISCOVERED, G.C. TO CONTACT THE O'REILLY PROJECT ADMINISTRATOR BEFORE PROCEEDING.
- SEE SHEET A1.1 FOR ADDITIONAL SITE INFORMATION REGARDING BUILDING PERIMETER.
- ALL PIER LOCATIONS AND WORK FOR SIGN AND/OR LIGHT POLES, FOUNDATIONS AND POWER TRENCHING MUST BE REVIEWED FOR CONFLICTS WITH EXISTING UTILITIES, EASEMENTS AND/OR UNDERGROUND STRUCTURES.

SITE PLAN PROVIDED FOR GENERAL REFERENCE OF EXISTING CONDITIONS. SCOPE OF WORK IDENTIFIED IN KEY NOTES.

1 SITE PLAN
SCALE: 1/16" = 1'-0"

KEY NOTES

- NEW HOLLOW METAL DOOR AND FRAME. SEE SHEET A1.1 FOR LOCATION AND SHEET AS.1 FOR DOOR SCHEDULE.
- NEW CONCRETE PAD. REFER TO DETAIL 2/ASP1.1 AND SHEET A1.1 FOR ADDITIONAL INFORMATION.
- RESTRIPE EXISTING PARKING LOT STRIPING.
- NEW OVERHEAD DOOR AND FRAME. SEE SHEET A1.1 FOR LOCATION AND SHEET AS.1 FOR DOOR SCHEDULE.
- NEW ALUMINUM STOREFRONT AND ENTRY DOOR.
- EXISTING BOLLARDS TO REMAIN. CLEAN AND REPAIR AS REQUIRED BEFORE PAINTING TO MATCH "HUNT CLUB GREEN." REFER TO FINISH SCHEDULE FOR PAINT SPECIFICATIONS.
- NEW POLE SIGN UNDER SEPARATE PERMIT. SEE SIGN SHEETS FOR ADDITIONAL INFORMATION.
- INSTALL NEW 6" WIDE x 5" HIGH x 6'-0" LONG CONCRETE WHEEL STOP. REFER TO 3/ASP1.1 FOR DETAILS.

DEMOLITION NOTES

- REMOVE CART CORRAL

CASCO
PROJECT MANAGERS
1225 Madison Road
St. Louis, MO 63127
Phone: (314) 821-1100
CASCO UNIVERSAL CORPORATION
ARCHITECTURAL 2625 CODE 1204

REVISIONS:

O'Reilly AUTO PARTS
CORPORATE OFFICES
233 SOUTH PATTERSON
SPRINGFIELD, MISSOURI 65802
417-862-2674 PHONE

PROJECT:
RE-MODEL O'REILLY AUTO PARTS STORE
523 NORTH MILITARY STREET
LORETTO, TN 38469
ARCHITECTURAL SITE PLAN

Professional Seal of **James A. Schmitt**
License #102092
Exp. Date: 6/31/18
Professional of Record

DRAWN: VVP
CHECKED: MGC
DATE: 2-15-2018
JOB NO.: 319287 (LTO)

ASP1.1

COPYRIGHT 2018 - DESIGNS, DRAWINGS AND SPECIFICATIONS ARE INSTRUMENTS OF SERVICE AND ARE THE PROPERTY OF THE DESIGN PROFESSIONAL. REPRODUCTION PROHIBITED WITHOUT THE EXPRESSED WRITTEN CONSENT OF THE DESIGN PROFESSIONAL.