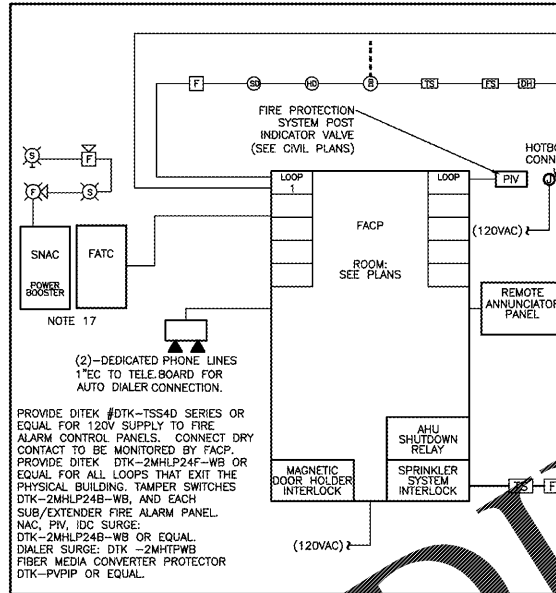
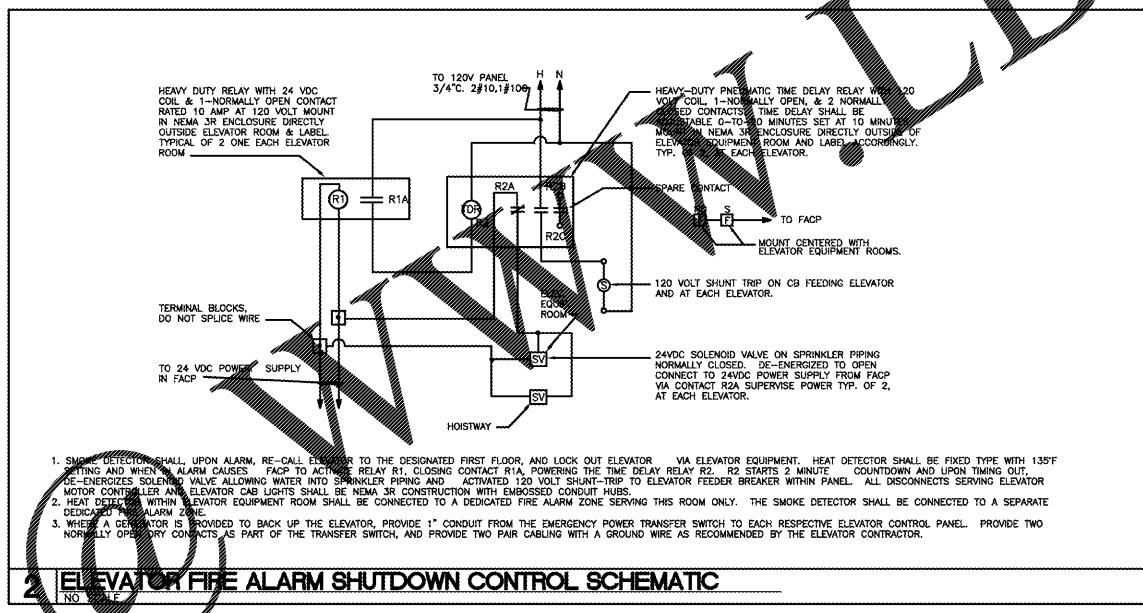


FIRE ALARM SYSTEM MATRIX	BUILDING SYSTEM OUTPUTS												CENTRAL COMM				
MANUAL FIRE ALARM PULL BOXES	X	X												X	X	X	
BUILDING SMOKE DETECTOR	X	X												X	X	X	
DUCT SMOKE DETECTOR			X	X										X	X	X	
SPRINKLER WATER FLOW	X	X												X	X	X	
SPRINKLER TAMPER			X	X										X	X	X	
ELEV. EQ. ROOM SMOKE DETECTOR	X	X												X	X	X	
ELEV. EQ. ROOM HEAT DETECTOR	X	X												X	X	X	
ELEV. SHAFT HEAT DETECTOR	X	X												X	X	X	
1ST FLOOR ELEV. LOBBY SMOKE DET.	X	X												X	X	X	
UPPER FLOORS ELEV. LOBBY SMOKE DET.	X	X												X	X	X	
NOTIFICATION DEVICE SHORT CIRCUIT OPEN CIRCUIT			X	X										X	X	X	
GROUND FAULT			X	X										X	X	X	
FIRE ALARM A.C. POWER FAILURE			X	X										X	X	X	
AC HEATING POWER FAILURE			X	X										X	X	X	
HOT BOXES			X	X										X	X	X	

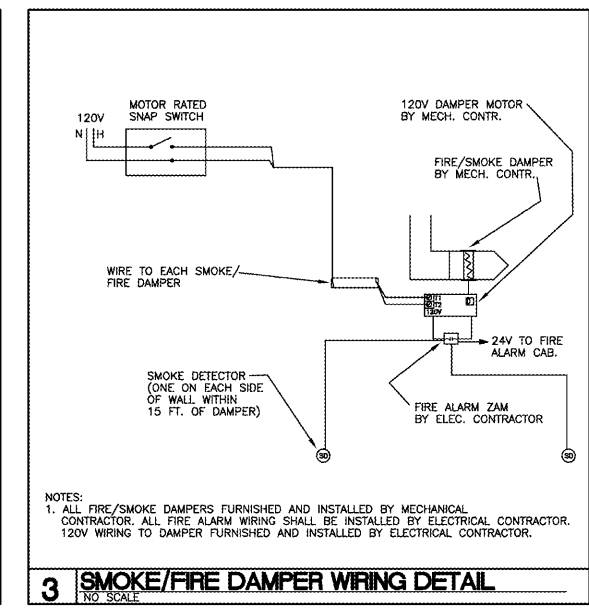


- ### FIRE ALARM NOTES
- FACP SHALL HAVE A MINIMUM 24HR. BATTERY BACKUP.
 - FACP SHALL BE FULLY ANALOG ADDRESSABLE.
 - FACP SHALL BE CONNECTED TO A UL APPROVED CENTRAL STATION.
 - ZONE PER NFPA 72, 2013 AND MANUFACTURER'S RECOMMENDATIONS WITH NO ONE ZONE EXCEEDING 15,000 S.F. PER FLOOR.
 - COORDINATE QUANTITY AND LOCATIONS OF DEVICES WITH CONTRACT DRAWINGS.
 - LOCATE SMOKE DETECTOR WITHIN 5' OF THE MAGNETIC HOLD OPEN DOORS. (TYPICAL)
 - LOCATE FIRE ALARM PULL STATION WITHIN 5' OF THE EXIT DOOR.
 - LOCATE SMOKE/HEAT DETECTOR WITHIN 5' OF THE FA EQUIPMENT (FACP, FATC).
 - LOCATION OF CEILING MOUNTED SMOKE/HEAT DETECTOR SHALL BE FIELD COORDINATED PRIOR TO ROUGH IN. THE DETECTOR SHALL BE A MINIMUM OF 2' AWAY FROM LIGHT FIXTURE AND A MINIMUM OF 3' AWAY FROM AIR DISTRIBUTION DEVICES.
 - AUTOMATIC DOOR CLOSING SHALL BE ACCOMPLISHED BY THE ACTIVATION OF THE LOCAL SMOKE DETECTORS AT THAT DOOR. SMOKE DETECTOR ACTIVATION SHALL ALERT THE BUILDING FIRE ALARM SYSTEM. THE FIRE ALARM SYSTEM SHALL CAUSE ALL HOLD OPEN DOORS TO CLOSE UPON ALARM ACTIVATION IN THE BUILDING.
 - ACTIVATION OF AN ALARM ZONE SHALL CAUSE ALL AIR HANDLING EQUIPMENT TO SHUT DOWN (ALL DAMPERS, AIR HANDLERS AND EXHAUST FANS MUST STOP).
 - ACTIVATION OF KITCHEN HOOD SUPPRESSION SYSTEM PROVIDES SIGNAL TO FACP WHICH TURNS OFF ALL ANNUNCIATING ZONES & CUTS OFF AHU SUPPLY.
 - ELECTRICAL CONTRACTOR SHALL COORDINATE EXACT LOCATIONS OF FLOW, PRESSURE, & TAMPER SWITCHES WITH FIRE PROTECTION CONTRACTOR PRIOR TO INSTALLATION.
 - ALL VISUAL DEVICES WITHIN THE SAME AREA SHALL BE SYNCHRONIZED.
 - ALL FIRE ALARM WIRING SHALL BE PLENUM RATED.
 - PROVIDE MULTI-TEMPORAL SOUNDING CAPABILITY AT ALL AUDIO DEVICES FOR EMERGENCY NOTIFICATION.
 - THE FIRE ALARM SYSTEM MANUFACTURER SHALL PROVIDE NOTIFICATION APPLIANCE CIRCUIT (NAC) POWER EXTENDERS AS REQUIRED.
 - THE DUCT SMOKE DETECTOR SHALL ONLY BE INSTALLED WITHIN 107.12.
 - THE CIRCUIT FEEDING THE FIRE ALARM PANEL IS DEDICATED FOR THE FIRE ALARM ONLY.
 - PROVIDE REMOTE SIGHT FOR EACH SMOKE DETECTOR ON CEILING WHERE UNIT IS ABOVE CEILING.
 - CONTRACTOR SHALL INCLUDE IN HIS LABOR TO RE-LOCATE UP TO 5 DEVICES UP TO 30' FROM EXISTING LOCATION.
 - CONTRACTOR SHALL INCLUDE IN HIS LABOR AND MATERIAL FOR UP TO (2) DUCT DETECTORS. ANNUNCIATING DEVICES, SMOKE DETECTORS AND (2) PULL STATIONS 100' FROM LOCAL PANEL (IN WALL NOT BUREAU MOUNTED) AS REQUIRED BY LOCAL AHU/ENGINEER.
 - CONTRACTOR RESPONSIBLE FOR SHOP DRAWINGS AS REQUIRED BY LOCAL AHU.
 - DUCT DETECTORS SHALL BE VERIFIED WITH THE MECHANICAL DRAWINGS FOR QUANTITY AND LOCATION. TOTAL QUANTITY MINIMUM SHALL BE BASED ON BOTH MECHANICAL SCHEDULES AND MECHANICAL SHOP LOCATIONS AND ELECTRICAL PLANS. WHEN DEVICE QUANTITIES (ELECTRICAL VS. MECHANICAL) ARE IN CONFLICT, PROVIDE THE GREATER QUANTITY OF DETECTORS.

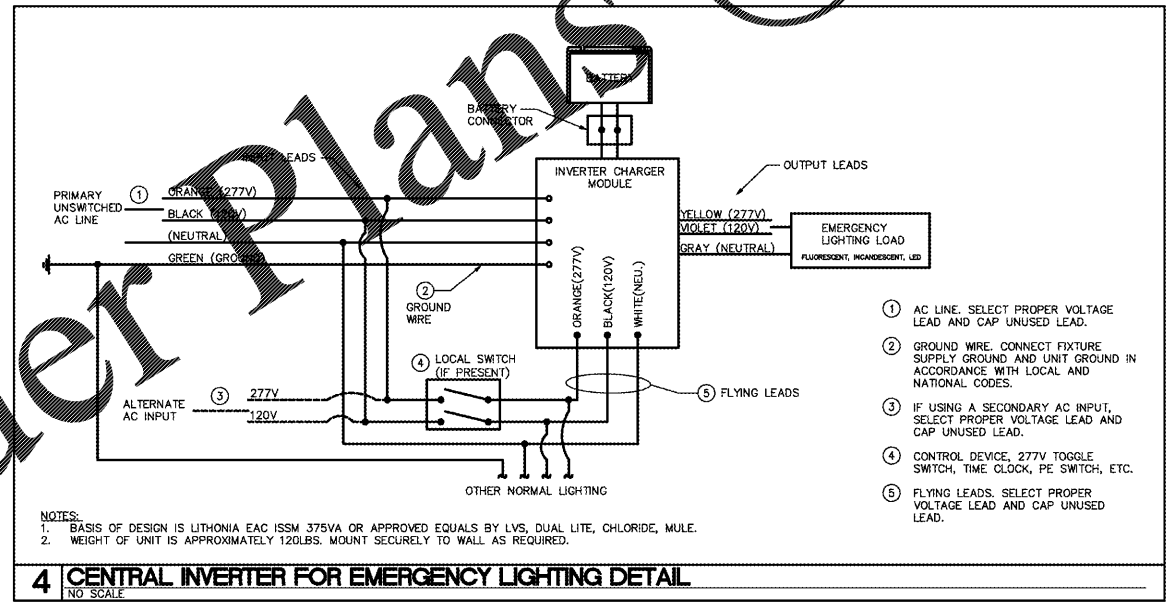
1 FIRE ALARM RISER DIAGRAM
NO SCALE



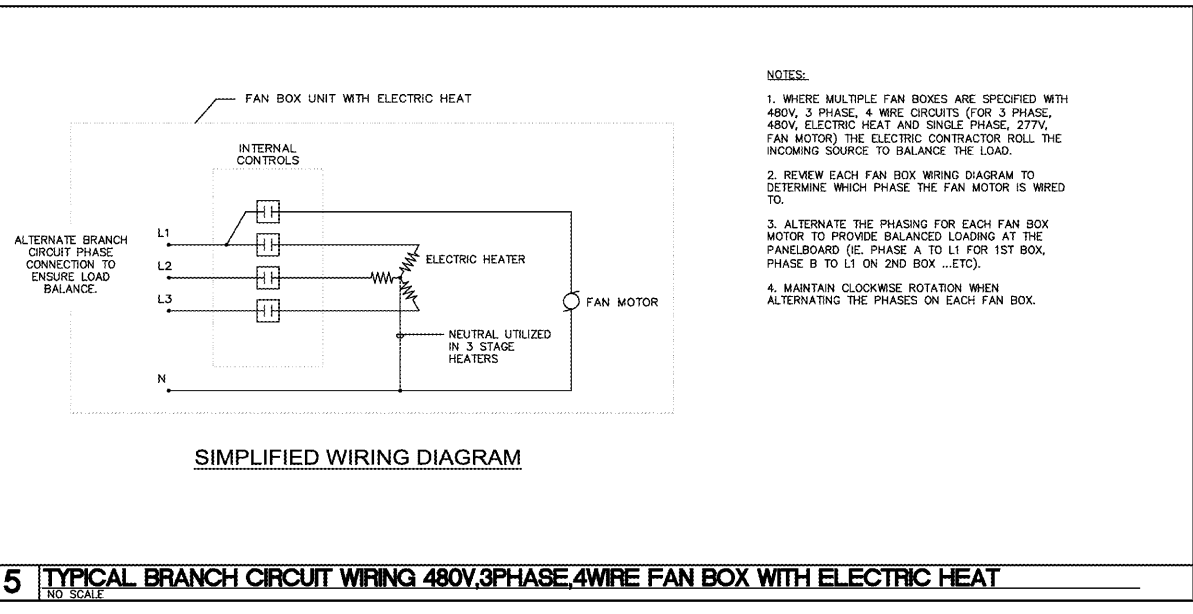
2 ELEVATOR FIRE ALARM SHUTDOWN CONTROL SCHEMATIC
NO SCALE



3 SMOKE/FIRE DAMPER WIRING DETAIL
NO SCALE



4 CENTRAL INVERTER FOR EMERGENCY LIGHTING DETAIL
NO SCALE



5 TYPICAL BRANCH CIRCUIT WIRING 480V, 3-PHASE, 4-WIRE FAN BOX WITH ELECTRIC HEAT
NO SCALE

Order Plans

FINLEY DESIGN
ARCHITECTURE
+ INTERIORS

FINLEY DESIGN PA
7806 NC HWY 751
SUITE 110
DURHAM, NC 27713
P 919-493-8200
F 919-493-8113
FINLEYDESIGNARCH.COM

optima
engineering

150 Fayetteville St., Suite 505, Raleigh, NC 27601
1807 South Tryon St., Suite 303, Charlotte, NC 28203
Phone: 919-828-2000 • www.optimaengineering.com

MICHAEL D. HOWELL
ENGINEER
040299
9-1-17

WESTPOINT 2
DURHAM, NC

REVISIONS

2017-09-01	PERMIT COMMENTS
------------	-----------------

PROJECT: 1342
DATE: 11/11/16
DRAWN BY: ABA
CHECKED BY: MDH

**ELECTRICAL
DETAILS**

EO.6

6 of 24

OPTIMA 6-16-0194