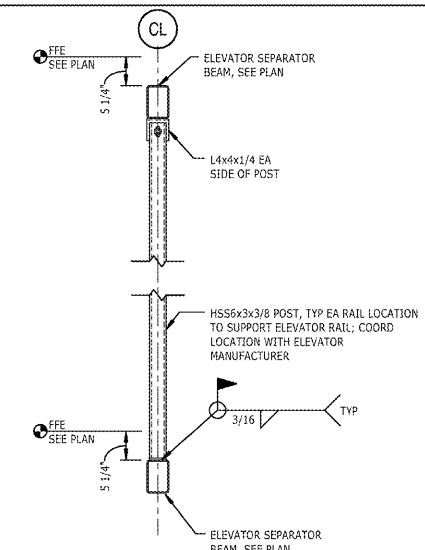
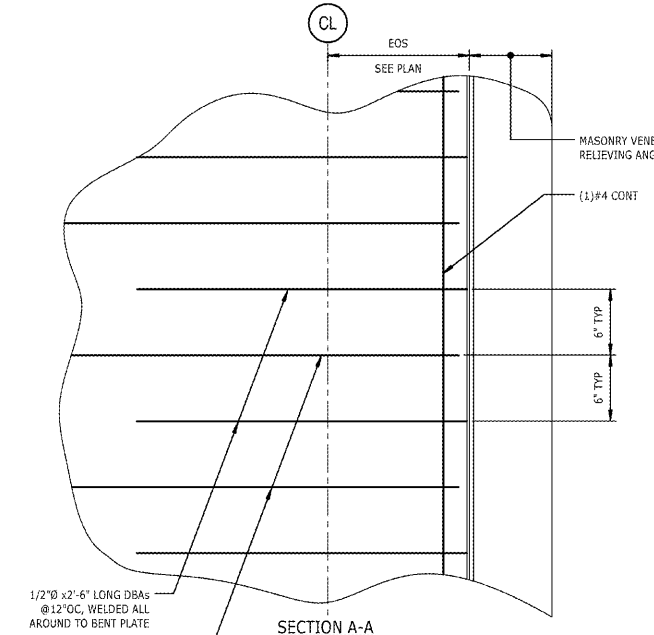


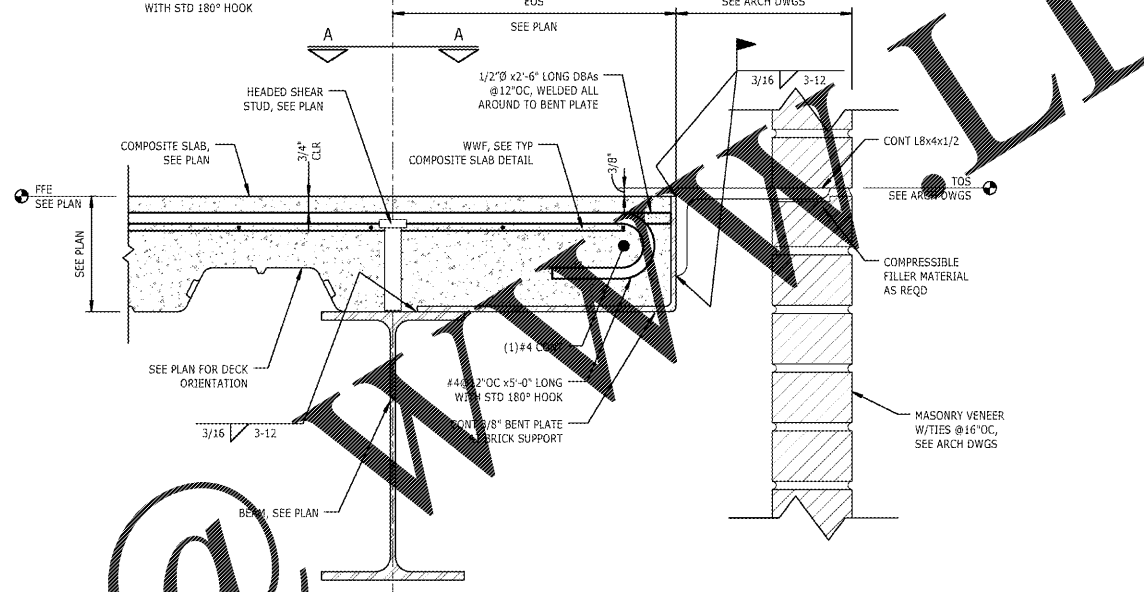
7 SECTION
SS.1 3/4" = 1'-0"



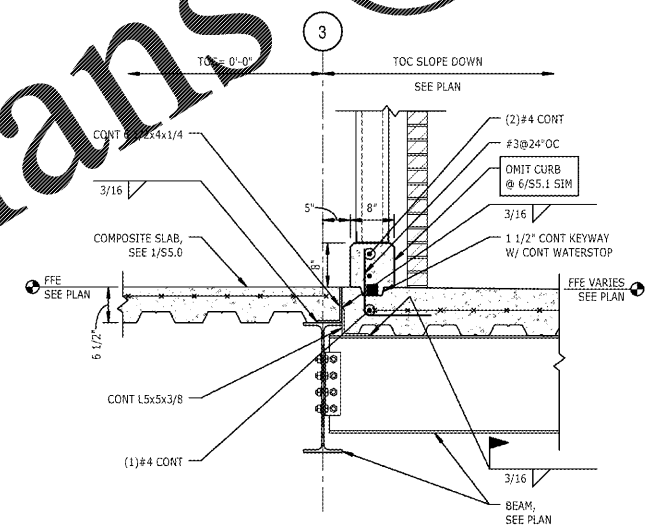
8 DETAIL
SS.1 TYPICAL ELEVATOR RAIL SUPPORTS
NTS
NOTES:
1. PROVIDE ELEVATOR RAIL SUPPORT POSTS WHERE FLOOR-TO-FLOOR HEIGHT EXCEEDS ELEVATOR MANUFACTURER'S LIMITATION FOR RAIL MAXIMUM UNSUPPORTED HEIGHT. VERIFY LOCATION WITH ELEVATOR MANUFACTURER.



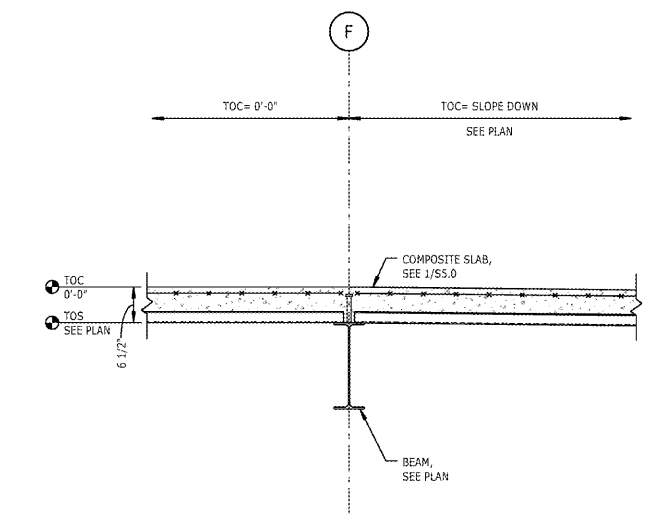
SECTION A-A
1 1/2" = 1'-0"



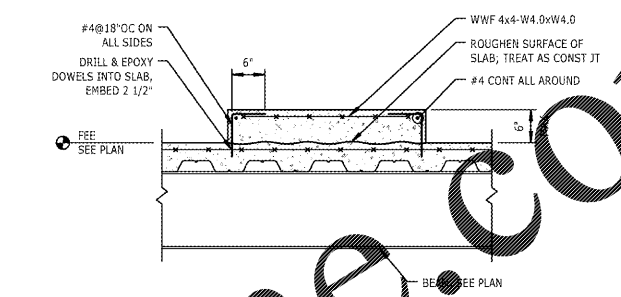
4 DETAIL
SS.1 TYPICAL EDGE OF SLAB AT BRICK RELIEVING ANGLE
NTS



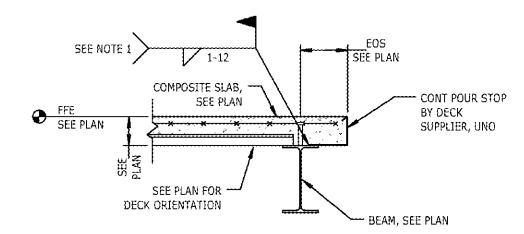
6 SECTION
SS.1 3/4" = 1'-0"



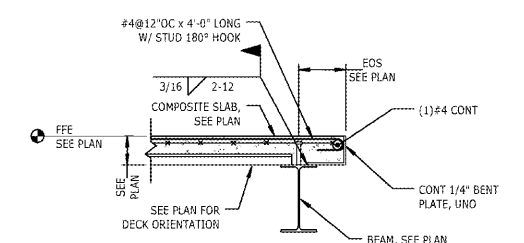
5 SECTION
SS.1 3/4" = 1'-0"



1 DETAIL
SS.1 TYPICAL CONCRETE EQUIPMENT PAD, ELEVATED SLAB ON METAL DECK
NTS
NOTES:
1. THE EXACT SIZE, SHAPE, AND LOCATION OF EQUIPMENT/HOUSEKEEPING PADS SHALL BE DETERMINED BY THE CONTRACTOR AFTER APPROVAL OF EQUIPMENT SHOP DRAWINGS. ANCHOR BOLTS, WHERE REQUIRED, SHALL BE SIZED AND LOCATED ACCORDING TO THE MANUFACTURER'S REQUIREMENTS.



EOS UP TO 6"

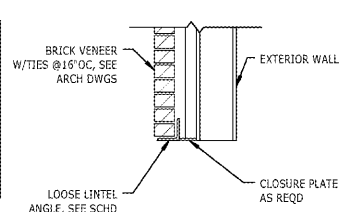


EOS GREATER THAN 6"

2 DETAIL
SS.1 TYPICAL EDGE OF SLAB
NTS
NOTES:
1. ATTACH POUR STOP TO BEAM PER STEEL DECK INSTITUTE REQUIREMENTS.
2. SEE 1/SS.0, NOTE 8.

STEEL LOOSE LINTEL ANGLE SUPPORTING BRICK VENEER

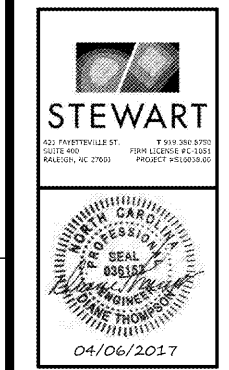
CLEAR OPENING	LOOSE LINTEL ANGLE
UP TO 5'-0"	L4x4x3/8
5'-1" TO 8'-0"	L6x4x3/8 (LLV)
8'-1" TO 10'-0"	L7x4x3/8 (LLV)
10'-1" TO 12'-0"	L7x4x1/2 (LLV)



3 DETAIL
SS.1 STEEL LOOSE LINTEL ANGLES SUPPORTING BRICK VENEER
NTS
NOTES:
1. ALL LOOSE LINTELS SHALL BE PAINTED OR GALVANIZED, SEE ARCHITECTURAL DRAWINGS.
2. PROVIDE 6" MINIMUM BEARING FOR OPENINGS UP TO 8'-0" WIDE. PROVIDE 8" MINIMUM BEARING FOR OPENINGS OVER 8'-0" WIDE.
3. SEE ARCHITECTURAL DRAWINGS FOR ANGLE PLACEMENT AND FLASHING.
4. LOOSE LINTEL ANGLES ARE NOT SHOWN ON THE STRUCTURAL DRAWINGS. SEE ARCHITECTURAL DRAWINGS FOR ALL LOCATIONS OF OPENINGS REQUIRING ANGLES.
5. FOR CLEAR OPENING DIMENSIONS GREATER THAN THOSE SHOWN IN THE SCHEDULE, SEE OTHER DETAILS OR CONTACT THE ENGINEER OF RECORD.



Finley Design PA
7806 nc hwy 751
Suite 110
Durham, NC 27713
919-493-8200
FINLEYDESIGNARCH.COM



Westpoint 2 Durham, NC

REVISIONS

NO.	DESCRIPTION

TYPICAL FLOOR FRAMING SECTIONS AND DETAILS
SS.1

PROJECT: S16028.00
DATE: 04/06/2017
DRAWN BY: DR
CHECKED BY: DJT

/VOLUMES/F DRIVE/FINLEY DESIGN/PROJECTS/1342 WESTPOINT 2/DRAWINGS/TITLEBLOCKS/1342-X-TB.DWG

Order Plans @