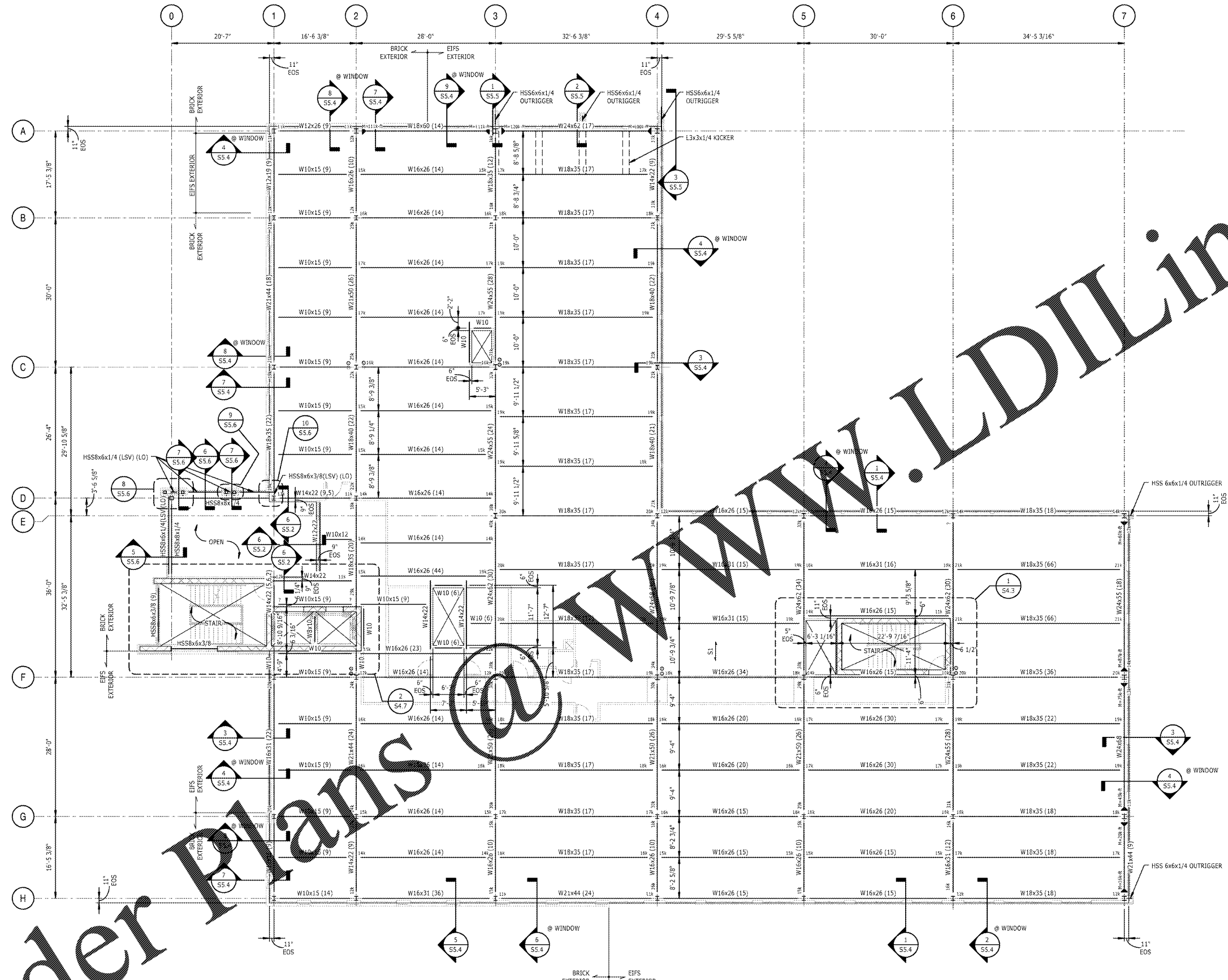


V:\VOLUMES\F DRIVE\FINLEY DESIGN\PROJECTS\1342 WESTPOINT 2\DRAWINGS\FILEBLOCKS\1342-X-TB.DWG



- 1 FOURTH FLOOR FRAMING PLAN**
1" = 10'-0"
- NOTES:
- FOR GENERAL NOTES AND ABBREVIATIONS, SEE S0.0.
 - FINISHED FLOOR ELEVATION 42'-8" ABOVE FINISHED FIRST FLOOR ELEVATION, UNO.
 - TOP OF STEEL ELEVATION BELOW FINISHED FLOOR ELEVATION, UNO (No) INDICATES TOP OF STEEL ELEVATION.
 - SI INDICATES STEEL DECK SPAN DIRECTION. CONSTRUCTION SHALL BE 3/4" LIGHT WEIGHT CONCRETE ON 2"-20GA COMPOSITE STEEL DECK. TOTAL THICKNESS = 5 1/4". SEE TYPICAL SLAB CONSTRUCTION DETAILS ON 1/S5.0.
 - MINIMUM COMPOSITE BEAM REACTION TO BE 10K, UNO.
 - W10" INDICATES COMPOSITE W10x15 BEAM WITH (S) STUDS AND AN END REACTION OF #K.
 - INDICATES MOMENT CONNECTION TYPE, SEE S3.1.
 - FOR STEEL COLUMN SCHEDULE, SEE S3.0.
 - INDICATES DRAIN LOCATIONS. COORDINATE WITH OTHER TRADES.

Order Plans

WWW.LDILine.com

Westpoint 2 Durham, NC

REVISIONS	

PROJECT:	S18038.00
DATE:	04/06/2017
DRAWN BY:	DR
CHECKED BY:	DJT

FOURTH FLOOR
FRAMING PLAN

S1.4