

1 ALUMINUM STOREFRONT ELEVATIONS
Scale: 1/4" = 1'-0"

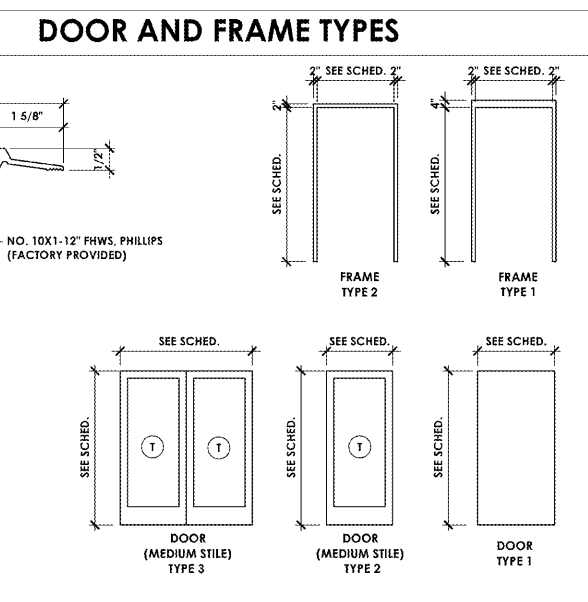
DOOR NO.	LOCATION	REMARKS / FIRE RATINGS	FRAME			DOOR				SIZE
			FINISH	MATERIAL	TYPE	TYPE	MATERIAL	FINISH	HARDWARE	
001	VESTIBULE ENTRY	GROUND FLOOR	CA	ASF	N/A	3	AL	CA	1	(2) 3'-0"x8'-0"
002	STAIR ENTRANCE	GR. FL. - 90 MIN. - MAGNETIC HOLD OPEN	PT	HM	1	1	SCW	WV	4	3'-0"x7'-0"
003	ELEVATOR MECH. RM.	GROUND FLOOR - 90 MIN.	PT	HM	1	1	HMI	PT	2	3'-0"x7'-0"
004	MECH. RM. DOOR	GROUND FLOOR	PT	HM	1	1	HMI	PT	2	3'-0"x7'-0"
005	STAIR EXIT	GROUND FLOOR - 90 MIN.	PT	HM	1	1	HMI	PT	2	3'-0"x7'-0"
006	ELECTRICAL ROOM	GROUND FLOOR	PT	HM	1	1	HMI	PT	2	3'-0"x7'-0"
007	SPRINKLER ROOM	GROUND FLOOR	PT	HM	1	1	HMI	PT	2	3'-0"x7'-0"
008	BELOW STAIR STORAGE	GROUND FLOOR - 90 MIN.	PT	HM	2	1	SCW	WV	2	3'-0"x7'-0"
009	SPRINKLER ROOM	GROUND FLOOR	PT	HM	1	1	HMI	PT	2	3'-0"x7'-0"
100	FRONT VESTIBULE ENTRY	FIRST FLOOR	CA	ASF	N/A	3	AL	CA	1	(2) 3'-0"x8'-0"
101	SIDE ENTRY	FIRST FLOOR	CA	ASF	N/A	3	AL	CA	1	(2) 3'-0"x8'-0"
102	REAR SERVICE DOOR	FIRST FLOOR	PT	HM	1	1	HMI	PT	2	4'-0"x7'-0"
103	SIDE SERVICE DOOR	FIRST FLOOR	PT	HM	1	1	HMI	PT	2	3'-0"x7'-0"
104	REAR VESTIBULE ENTRY	FIRST FLOOR - 60 MIN. TGP FIREFRAMES DOORS	CA	ASF	N/A	3	AL	CA	1	(2) 3'-0"x8'-0"
105	STAIR EXIT	FIRST FLOOR - 90 MIN.	PT	HM	1	1	HMI	PT	2	3'-0"x7'-0"
106	MECH. RM.	FIRST FLOOR	PT	HM	1	1	HMI	PT	2	3'-0"x7'-0"
107	STAIR ENTRY	FIRST FLOOR - 90 MIN.	PT	HM	1	1	HMI	PT	2	3'-0"x7'-0"
108	STAIR ENTRY	FIRST FL. - 90 MIN. - MAGNETIC HOLD OPEN	PT	HM	1	1	SCW	WV	4	3'-0"x7'-0"
109	SUITE ENTRY	FIRST FLOOR - 90 MIN.	PT	HM	1	1	SCW	WV	2	3'-0"x8'-0"
200	STAIR ENTRY	SECOND FL. - 90 MIN. - MAGNETIC HOLD OPEN	PT	HM	1	1	SCW	WV	4	3'-0"x7'-0"
201	SUITE ENTRY	SECOND FLOOR	N/A	N/A	N/A	4	GL	N/A	7	3'-0"x8'-0"
202	RESTROOM DOOR	SECOND FLOOR	PT	HM	2	1	SCW	WV	5	3'-0"x7'-0"
203	RESTROOM SHOWER DOOR	SECOND FLOOR	PT	HM	2	1	SCW	WV	6	3'-0"x7'-0"
204	RESTROOM DOOR	SECOND FLOOR	PT	HM	2	1	SCW	WV	5	3'-0"x7'-0"
205	BATHROOM SHOWER DOOR	SECOND FLOOR	PT	HM	2	1	SCW	WV	6	3'-0"x7'-0"
206	SUITE ENTRY	SECOND FLOOR	N/A	N/A	N/A	4	GL	N/A	7	3'-0"x8'-0"
207	MECH. RM. DOOR	SECOND FLOOR	PT	HM	2	1	SCW	WV	3	3'-0"x7'-0"
208	ROOM CLOSET DOOR	SECOND FLOOR	PT	HM	2	1	SCW	WV	3	3'-0"x7'-0"
209	STAIR ENTRY	SECOND FLOOR - 90 MIN.	PT	HM	1	1	SCW	WV	3	3'-0"x7'-0"
210	CLOSET	SECOND FLOOR	PT	HM	1	1	SCW	WV	3	3'-0"x7'-0"
300	STAIR ENTRY	THIRD FL. - 90 MIN. - MAGNETIC HOLD OPEN	PT	HM	1	1	SCW	WV	4	3'-0"x7'-0"
301	SUITE ENTRY	THIRD FLOOR	N/A	N/A	N/A	4	GL	N/A	7	3'-0"x8'-0"
302	RESTROOM DOOR	THIRD FLOOR	PT	HM	2	1	SCW	WV	5	3'-0"x7'-0"
303	RESTROOM DOOR	THIRD FLOOR	PT	HM	2	1	SCW	WV	5	3'-0"x7'-0"
304	SUITE ENTRY	THIRD FLOOR	N/A	N/A	N/A	4	GL	N/A	7	3'-0"x8'-0"
305	MECH. RM. DOOR	THIRD FLOOR	PT	HM	2	1	SCW	WV	3	3'-0"x7'-0"
306	BROOM CLOSET DOOR	THIRD FLOOR	PT	HM	2	1	SCW	WV	3	3'-0"x7'-0"
307	STAIR ENTRY	THIRD FLOOR - 90 MIN.	PT	HM	1	1	SCW	WV	3	3'-0"x7'-0"
308	SUITE ENTRY	THIRD FLOOR	N/A	N/A	N/A	4	GL	N/A	7	3'-0"x8'-0"
400	STAIR ENTRY	FOURTH FL. - 90 MIN. - MAGNETIC HOLD OPEN	PT	HM	1	1	SCW	WV	4	3'-0"x7'-0"
401	SUITE ENTRY	FOURTH FLOOR	N/A	N/A	N/A	4	GL	N/A	7	3'-0"x8'-0"
402	RESTROOM DOOR	FOURTH FLOOR	PT	HM	2	1	SCW	WV	5	3'-0"x7'-0"
403	RESTROOM DOOR	FOURTH FLOOR	PT	HM	2	1	SCW	WV	5	3'-0"x7'-0"
404	SUITE ENTRY	FOURTH FLOOR	N/A	N/A	N/A	4	GL	N/A	7	3'-0"x8'-0"
405	MECH. RM. DOOR	FOURTH FLOOR	PT	HM	2	1	SCW	WV	8	3'-0"x7'-0"
406	BROOM CLOSET DOOR	FOURTH FLOOR	PT	HM	2	1	SCW	WV	3	3'-0"x7'-0"
407	STAIR ENTRY	FOURTH FLOOR - 90 MIN.	PT	HM	1	1	SCW	WV	3	3'-0"x7'-0"
408	SUITE ENTRY	FOURTH FLOOR	N/A	N/A	N/A	4	GL	N/A	7	3'-0"x8'-0"

SCW = SOLID CORE WOOD HM = HOLLOW METAL AL = ALUMINUM WV = WOOD ENER PT = PAINTED
 HCW = HOLLOW CORE WOOD HMI = HOLLOW METAL INSULATED ASF = ALUMINUM STOREFRONT GL = GLASS CA = CLEAR ANODIZED

LEGEND

- GLAZING WITH FROSTED FILM
- TEMPERED SAFETY GLASS
- BRAKE METAL
- METAL SPANDREL PANEL

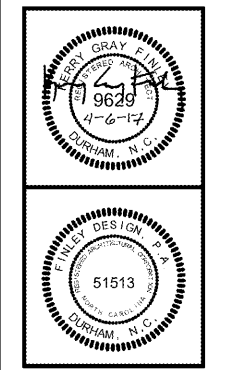
- NOTES**
- HARDWARE INSTALLER TO GENERATE HARDWARE AND KEYING SCHEDULE TO BE REVIEWED BY OWNER AND ARCHITECT.
 - HOLLOW METAL DOOR FRAMES TO BE MITERED WITH WELDED CORNERS, GROUND SMOOTH.
 - HARDWARE PRODUCT DATA AND FINISHES TO BE APPROVED BY ARCHITECT PRIOR TO ORDERING.
 - ALUMINUM STOREFRONT TO BE KAWNEER 451T OR EQUAL. GLASS TO BE LOW E CLEAR, 1" INSULATED GLASS SOLARBAN 60, OR EQUAL.
 - EXTERIOR FACE OF EXTERIOR DOOR AND FRAMES TO BE PAINTED WITH TWO COATS OF ENAMEL TO MATCH BUILDING EXTERIOR. REFERENCE BUILDING ELEVATIONS FOR MORE INFORMATION.
 - ALL DOOR HARDWARE TO BE COMMERCIAL QUALITY AND MEET ACCESSIBILITY STANDARDS.
 - ALL ENTRANCE DOORS FROM EXTERIOR TO HAVE THRESHOLD 1" AS FOLLOWS: PEMKO 2005AT LATCHING PANIC EXIT THRESHOLD - 5" WIDTH, 1/2" HEIGHT, THERMOSEAL INSERT, MILL FINISH ALUMINUM - OR EQUAL AS APPROVED BY ARCHITECT.
 - ALL GLAZING TO BE PPG SOLARBAN 40 OPTIGRAY + CLEAR OR ARCHITECT APPROVED EQUAL. U-FACTOR OF .28 OR BETTER AND SHGC OF .3 OR BETTER



- HARDWARE SCHEDULE**
- HARDWARE SET 1:** THRESHOLD, SET PIVOTS, CLOSERS, RIM CYLINDERS, SILENCERS, DOOR SWEEP, PULL HANDLES, PUSH BAR.
 - HARDWARE SET 2:** THRESHOLD 1", STOREROOM LOCK, SILENCERS, HINGES, CLOSERS
 - HARDWARE SET 3:** THRESHOLD 1", STOREROOM LOCK, SILENCERS, HINGES
 - HARDWARE SET 4:** CLOSER, PASSAGE SET, SILENCERS, MAGNETIC HOLD-OPEN, HINGES
 - HARDWARE SET 5:** CLOSER, PASSAGE SET, SILENCER, HINGES, STAINLESS TOE KICK
 - HARDWARE SET 6:** BATH PRIVACY SET, SILENCER, HINGES
 - HARDWARE SET 7:** HARDWARE PER MANUFACTURER REQUIREMENTS, THUMB LOCK, KEYED FLOOR CYLINDER
 - HARDWARE SET 8:** THRESHOLD 1", STOREROOM LOCK, SILENCERS, HINGES, CLOSERS, PANIC HARDWARE



FINLEY DESIGN PA
7806 NC HWY 751
SUITE 110
DURHAM, NC 27713
919-493-8200
FINLEYDESIGNARCH.COM



WESTPOINT 2
DURHAM, NC

REVISIONS

1	PERMIT COMMENT 04-11-17
2	PERMIT COMMENT 05-05-17

PROJECT: 1342
DATE: 04/06/17
DRAWN BY: JHB
CHECKED BY: JDL

DOOR SCHEDULE + STOREFRONT ELEVATIONS

A11.0

/VOLUMES/F DRIVE/FINLEY DESIGN/PROJECTS/1342 WESTPOINT 2/DRAWINGS/1342_STOREFRONT & DOOR SCHEDULE.DWG

Order Plans @