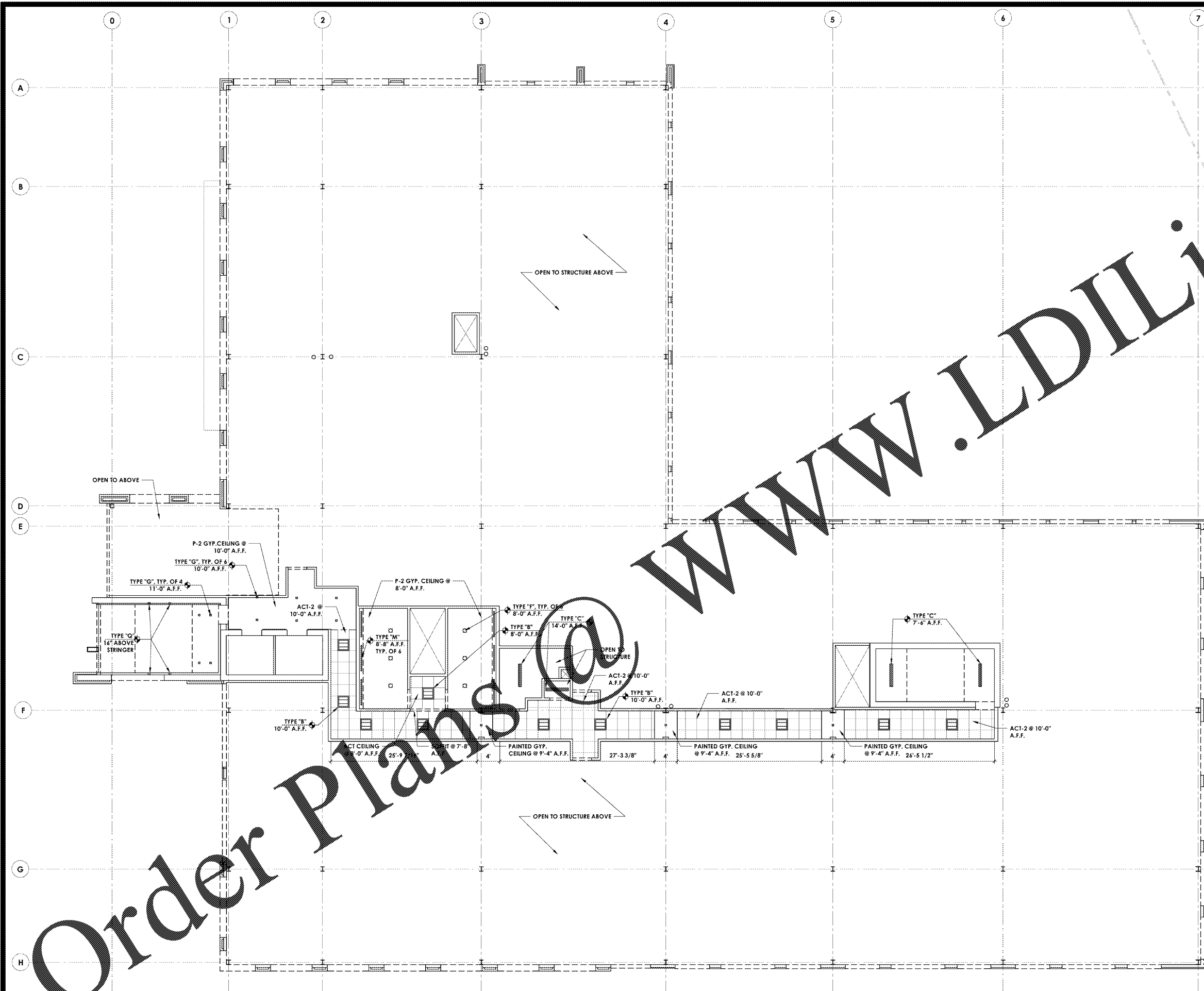


V:\VOLUMES\FINLEY DESIGN\PROJECTS\1342 WESTPOINT 2\DRAWINGS\1342 PLANS.DWG

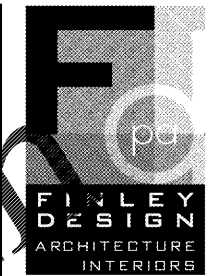


**SYMBOL LEGEND**

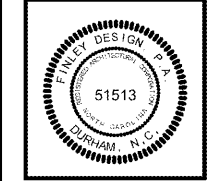
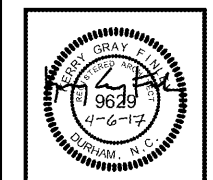
- 2.A WALL TYPE KEY
- 01 MATERIAL KEY
- 8 WINDOW KEY
- 02 DOOR TYPE KEY
- 2 A.B.0 WALL SECTION KEY
- 1 3.3 EXT. ELEVATION KEY
- 1 A.P.00 PLAN DETAIL KEY
- C COMPACT PARKING SPOT
- 1 4 3.30 2 INTERIOR ELEVATION KEY

**LIGHTING LEGEND**

- LIGHT TYPE "A" - FINELITE HPR LED - 2X4 DROP IN
- LIGHT TYPE "B" - LITHONIA TROFFER 2GT - 2X2 DROP IN
- LIGHT TYPE "C" - LITHONIA SQUARE BASKET WRAP - SURFACE MOUNTED DOWN
- LIGHT TYPE "D" - ZANEEN - ATRIA Q2 24VDC MONO - ATR.037.33.US
- LIGHT TYPE "E" - ZANEEN - ATRIA Q1 24VDC MONO - ATR.007.33.US
- LIGHT TYPE "F" - ZANEEN - DIXIT RA11 - L5602121
- LIGHT TYPE "G" - ZANEEN - DIXIT RA8 - L5600921
- LIGHT TYPE "H" - ZANEEN TEIRA PARCO II - 1330 - L9813406 - BOLLARD
- LIGHT TYPE "I" - LED PENDANT LIGHT
- LIGHT TYPE "J" - ZANEEN MONACO 200 LED WALL-DIRECT/INDIRECT #L9W35206
- LIGHT TYPE "K" - ZANEEN MONACO 200 LED WALL-DIRECT/INDIRECT #L9W51308
- LIGHT TYPE "L" - ZANEEN TETRA LINEAR LED 900 WALL-UPLIGHT #L9W17806
- LIGHT TYPE "M" - ZANEEN - IDAHO REC. T5/LED CUSTOM LENGTH - L3ID-REC-SYS
- LIGHT TYPE "O" - DECORATIVE LED PENDANT LIGHT
- LIGHT TYPE "P" - LITHONIA LIGHTING - VAP LED - ARCHITECTURAL VANDAL-RESISTANT LED LINEAR LUMINAIRE - SURFACE MOUNT
- LIGHT TYPE "Q" - ZANEEN - GOOO! MALL - L36708
- ACT-1 - CEILING TILE - ARMSTRONG 2X2 VL W/ RETENTION CLIPS TO RESIST UPLIFT - WHITE
- ACT-2 - CEILING TILE - ARMSTRONG 2X2 ULTIMA TEGULAR - WHITE



FINLEY DESIGN PA  
7806 NC HWY 751  
SUITE 110  
DURHAM, NC 27713  
919-493-8200  
FINLEYDESIGNARCH.COM



**WESTPOINT 2  
DURHAM, NC**

**REVISIONS**

NO.	DESCRIPTION

PROJECT: 1342  
 DATE: 04/06/17  
 DRAWN BY: JHS  
 CHECKED BY: JDL  
**THIRD FLOOR REFLECTED CEILING PLAN A6.3**

**1 REFLECTED CEILING PLAN**  
Scale: 1/8" = 1'-0"