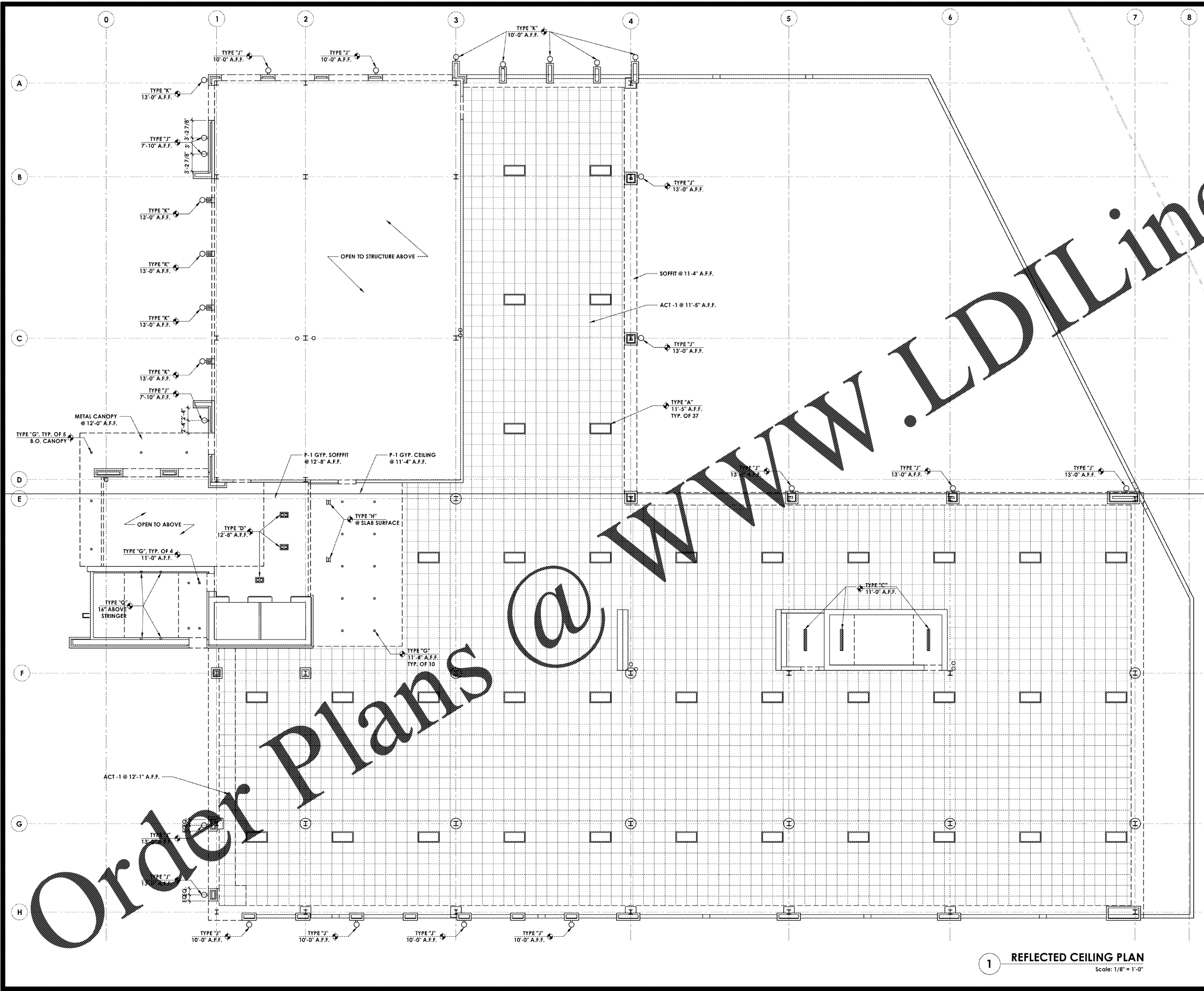


/VOLUMES/F DRIVE/FINLEY DESIGN/PROJECTS/1342 WESTPOINT 2/DRAWINGS/1342 PLANS.DWG



SYMBOL LEGEND	
	WALL TYPE KEY
	MATERIAL KEY
	WINDOW KEY
	DOOR TYPE KEY
	WALL SECTION KEY
	EXTERNAL ELEVATION KEY
	PLAN DETAIL KEY
	COMPACT PARKING SPOT
	INTERIOR ELEVATION KEY

LIGHTING LEGEND	
	LIGHT TYPE "A" - FINELITE HPR LED - 2X4 DROP IN
	LIGHT TYPE "B" - LITHONIA TROFFER 2GT - 2X2 DROP IN
	LIGHT TYPE "C" - LITHONIA SQUARE BASKET WRAP - SURFACE MOUNTED DOWN
	LIGHT TYPE "D" - ZANEEN - ATRIA Q2 24VDC MONO - ATR.037.33.US
	LIGHT TYPE "E" - ZANEEN - ATRIA Q1 24VDC MONO - ATR.007.33.US
	LIGHT TYPE "F" - ZANEEN - DIXIT RA11 - LS602121
	LIGHT TYPE "G" - ZANEEN - DIXIT RA8 - LS600921
	LIGHT TYPE "H" - ZANEEN - TETRA PARCO II - 1330 - L9B13406 - BOLLARD
	LIGHT TYPE "I" - LED PENDANT LIGHT
	LIGHT TYPE "J" - ZANEEN MONACO 200 LED WALL-DIRECT/INDIRECT #L9W35206
	LIGHT TYPE "K" - ZANEEN MONACO 200 LED WALL-DIRECT/INDIRECT #L9W51308
	LIGHT TYPE "L" - ZANEEN TETRA LINEAR LED 900 WALL-UPLIGHT #L9W17806
	LIGHT TYPE "M" - ZANEEN - IDAHO REC. T5/LED CUSTOM LENGTH - L3ID-REC-SYS
	LIGHT TYPE "N" - DECORATIVE LED PENDANT LIGHT
	LIGHT TYPE "O" - LITHONIA LIGHTING - VAP LED - ARCHITECTURAL VANDAL-RESISTANT LED LINEAR LUMINAIRE - SURFACE MOUNT
	LIGHT TYPE "P" - ZANEEN - GOOO! MALL - L36708...
	ACT-1 - CEILING TILE - ARMSTRONG 2X2 VL W/ RETENTION CLIPS TO RESIST UPLIFT - WHITE
	ACT-2 - CEILING TILE - ARMSTRONG 2X2 ULTIMA REGULAR - WHITE

FINLEY DESIGN ARCHITECTURE INTERIORS

FINLEY DESIGN PA
7806 NC HWY 751
SUITE 110
DURHAM, NC 27713
919-493-8200
FINLEYDESIGNARCH.COM

Professional Engineer Seal: GRAY FINLEY DESIGN ARCHITECTURE INTERIORS, DURHAM, N.C., No. 9629, 4-6-17

Professional Engineer Seal: FINLEY DESIGN ARCHITECTURE INTERIORS, DURHAM, N.C., No. 51513

WESTPOINT 2
DURHAM, NC

NO.	DATE	DESCRIPTION

PROJECT: 1342
DATE: 04/06/17
DRAWN BY: JHS
CHECKED BY: JOL

FIRST FLOOR REFLECTED CEILING PLAN A6.1

1 REFLECTED CEILING PLAN
Scale: 1/8" = 1'-0"