

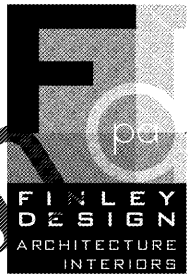
7:\VOLUMES\F DRIVE\1\FINLEY DESIGN\PROJECTS\1342 WESTPOINT 2\DRAWINGS\1342\_ELEVATIONS.DWG

### INTERIOR MATERIAL LEGEND

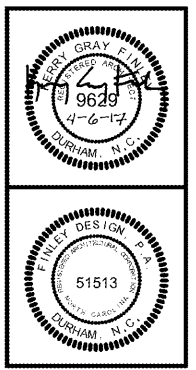
- (B1) BRICK - TAYLOR 373 AUTUMN BLEND (BROWN)
- (C1) MASONRY VENEER - ROCKCAST MODULAR VENEER - SMOOTH - WHEATSTONE (TO MATCH B3)
- (CP1) CARPET - TILE
- (CP2) CARPET - BROADLOOM - SOLID
- (P1) PAINT - GRAY ACCENT
- (P2) PAINT - WHITE
- (P3) PAINT - SW6142 MACADAMIA - LIGHT TAN
- (T1) WALL TILE - GRAY - LARGE
- (T2) WALL TILE - GRAY - SMALL
- (WB1) WALL BASE - CARPET
- (WB2) WALL BASE - TILE
- (WB3) WALL BASE - TILE
- (WB4) VINYL WALL BASE - GRAY
- (WP1) WALL PAPER

### EXTERIOR MATERIAL LEGEND

- (B1) BRICK - TAYLOR 373 AUTUMN BLEND (BROWN)
- (B2) BRICK - TAYLOR 370 AUTUMN BLEND (TAN)
- (B3) BRICK - TAYLOR - PEARL GRAY (LIGHT TAN)
- (C1) MASONRY VENEER - ROCKCAST MODULAR VENEER - SMOOTH - WHEATSTONE (TO MATCH B3)
- (C2) CMU - ADAMS PRODUCTS - POLISHED FACE CMU 5707 (TO MATCH B3)
- (E1) EIFS - SW6144 UMBER (BROWN)
- (E2) EIFS - SW2823 ROCKWOOD (BROWN)
- (E3) EIFS - SW6142 MACADAMIA (LIGHT TAN)
- (E4) EIFS - SW7650 ELLIE GRAY (GRAY)
- (M1) METAL - BROWN (TO MATCH P2)
- (M2) METAL - TAN (TO MATCH P2)
- (M3) METAL - LIGHT TAN (TO MATCH E3)
- (M4) METAL - GRAY (TO MATCH E4)
- (M5) METAL - BREAK METAL (TO MATCH STOREFRONT)
- (SF1) ALUMINUM STOREFRONT - CLEAR ANODIZED, TYP.



FINLEY DESIGN PA  
7806 NC HWY 75 1  
SUITE 110  
DURHAM, NC 27713  
919-493-8200  
FINLEYDESIGNARCH.COM



WESTPOINT 2  
DURHAM, NC

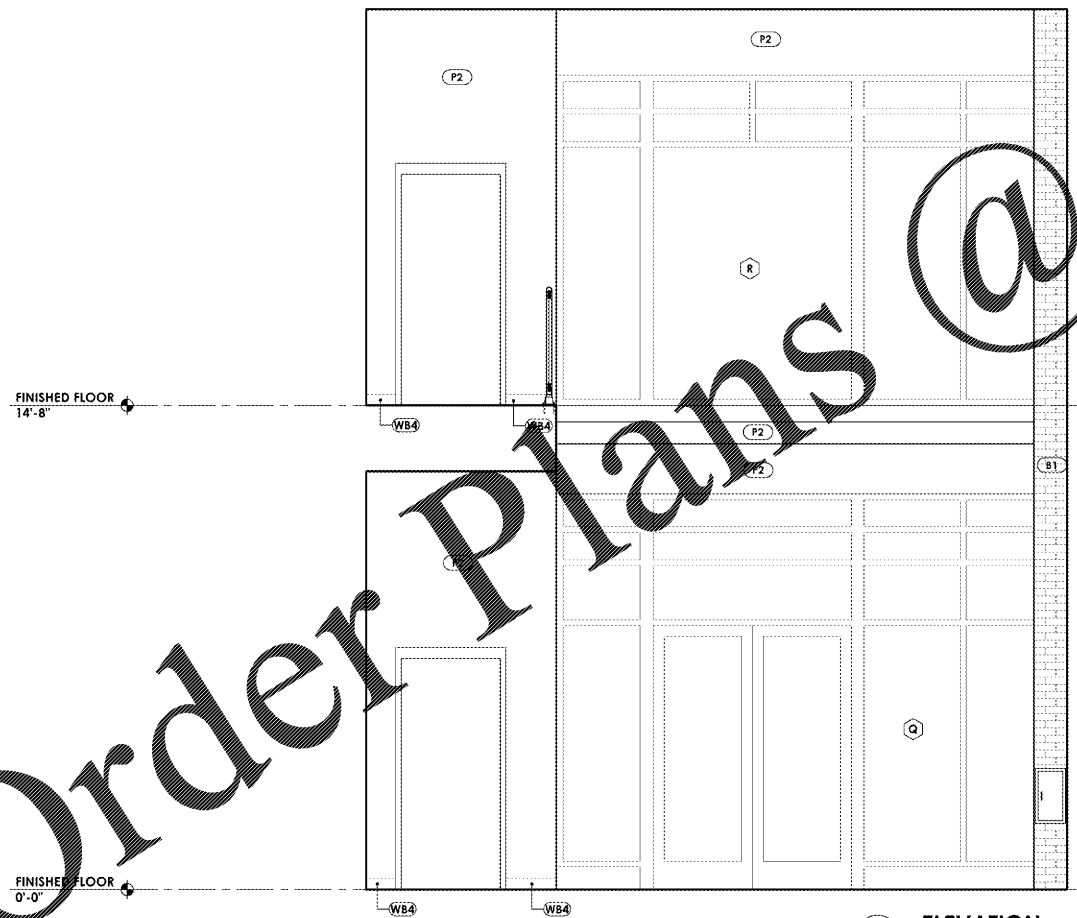
#### REVISIONS

NO.	DESCRIPTION

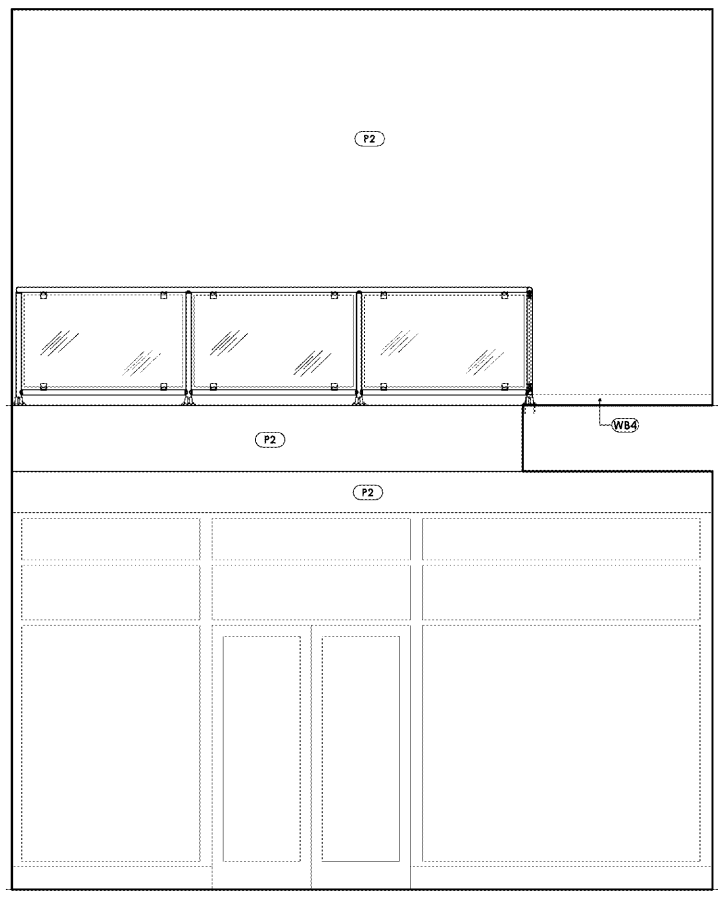
PROJECT: 1342  
DATE: 04/06/17  
DRAWN BY: JHB  
CHECKED BY: JDL

INTERIOR ELEVATIONS

A3.33



2 ELEVATION  
Scale: 3/8" = 1'-0"



1 ELEVATION  
Scale: 3/8" = 1'-0"

WWW.LDILine.com

Order Plans @