

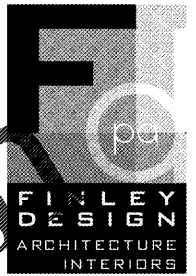
7/VOLUMES/F DRIVE-1/FINLEY DESIGN/PROJECTS/1342 WESTPOINT 2/DRAWINGS/1342_ELEVATIONS.DWG

INTERIOR MATERIAL LEGEND

- (B1) BRICK - TAYLOR 373 AUTUMN BLEND (BROWN)
- (C1) MASONRY VENEER - ROCKCAST MODULAR VENEER - SMOOTH - WHEATSTONE (TO MATCH B3)
- (CP1) CARPET - TILE
- (CP2) CARPET - BROADLOOM - SOLID
- (P1) PAINT - GRAY ACCENT
- (P2) PAINT - WHITE
- (P3) PAINT - SW6142 MACADAMIA - LIGHT TAN
- (T1) WALL TILE - GRAY - LARGE
- (T2) WALL TILE - GRAY - SMALL
- (WB1) WALL BASE - CARPET
- (WB2) WALL BASE - TILE
- (WB3) WALL BASE - TILE
- (WB4) VINYL WALL BASE - GRAY
- (WP1) WALL PAPER

EXTERIOR MATERIAL LEGEND

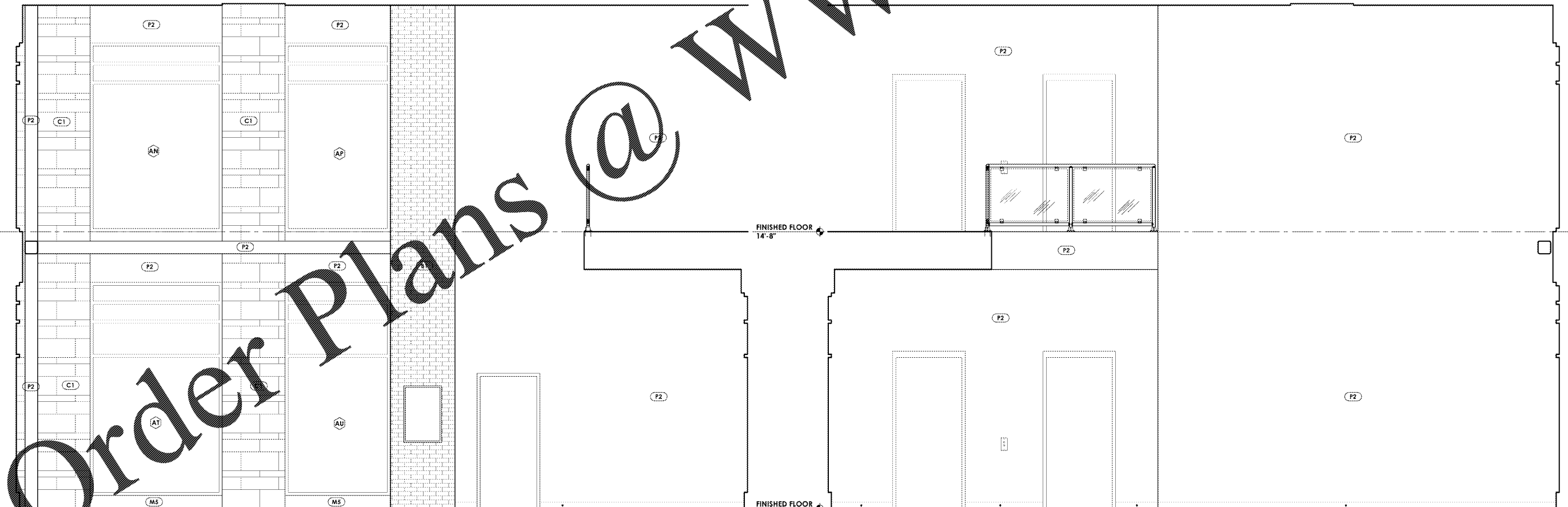
- (B1) BRICK - TAYLOR 373 AUTUMN BLEND (BROWN)
- (B2) BRICK - TAYLOR 370 AUTUMN BLEND (TAN)
- (B3) BRICK - TAYLOR - PEARL GRAY (LIGHT TAN)
- (C1) MASONRY VENEER - ROCKCAST MODULAR VENEER - SMOOTH - WHEATSTONE (TO MATCH B3)
- (C2) CMU - ADAMS PRODUCTS - POLISHED FACE CMU 8" (TO MATCH B3)
- (E1) EIFS - SW6144 UMBER (BROWN)
- (E2) EIFS - SW2823 ROCKWOOD (TAN)
- (E3) EIFS - SW6142 MACADAMIA (LIGHT TAN)
- (E4) EIFS - SW7650 ELLIE GRAY (GRAY)
- (M1) METAL - BROWN (TO MATCH P2)
- (M2) METAL - TAN (TO MATCH P2)
- (M3) METAL - LIGHT TAN (TO MATCH E3)
- (M4) METAL - GRAY (TO MATCH E4)
- (M5) METAL - BREAK METAL (TO MATCH STOREFRONT)
- (SF1) ALUMINUM STOREFRONT - CLEAR ANODIZED, TYP.



FINLEY DESIGN PA
 7806 NC HWY 751
 SUITE 110
 DURHAM, NC 27713
 919-493-8200
 FINLEYDESIGNARCH.COM



WWW.LDILINE.COM



2 ELEVATION
 Scale: 3/8" = 1'-0"

1 ELEVATION
 Scale: 3/8" = 1'-0"

WESTPOINT 2
DURHAM, NC

REVISIONS

NO.	DESCRIPTION

PROJECT: 1342
 DATE: 04/06/17
 DRAWN BY: JHB
 CHECKED BY: JDL

INTERIOR ELEVATIONS

A3.32