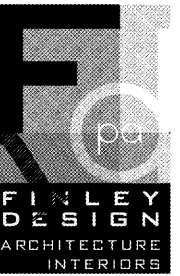
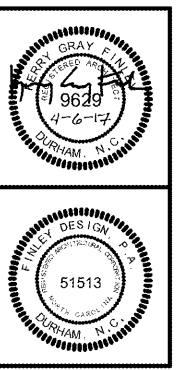


**EXTERIOR MATERIAL LEGEND**

- (B1) BRICK - TAYLOR - 373 AUTUMN BLEND (BROWN)
- (B2) BRICK - TAYLOR - 370 AUTUMN BLEND (TAN)
- (B3) BRICK - TAYLOR - PEARL GRAY (LIGHT TAN)
- (C1) MASONRY VENEER - ROCKCAST MODULAR VENEER - SMOOTH WHEATSTONE (TO MATCH B3)
- (C2) CMU - ADAMS PRODUCTS - POLISHED FACE CLAY (TO MATCH B3)
- (E1) EIFS - SW6146 UMBER (BROWN)
- (E2) EIFS - SW2823 ROCKWOOD CLAY (TAN)
- (E3) EIFS - SW6142 MACADAM (LIGHT TAN)
- (E4) EIFS - SW7600 LILLIE GRAY (GRAY)
- (M1) METAL - BROWN (TO MATCH E1)
- (M2) METAL - LIGHT TAN (TO MATCH E2)
- (M3) METAL - LIGHT TAN (TO MATCH E3)
- (M4) METAL - GRAY (TO MATCH E4)
- (M5) METAL - BREAK METAL (TO MATCH STOREFRONT)
- (SF1) ALUMINUM STOREFRONT - CLEAR ANODIZED, TYP.



FINLEY DESIGN PA  
7806 NC HWY 751  
SUITE 110  
DURHAM, NC 27713  
919-493-8200  
FINLEYDESIGNARCH.COM



**WESTPOINT 2  
DURHAM, NC**

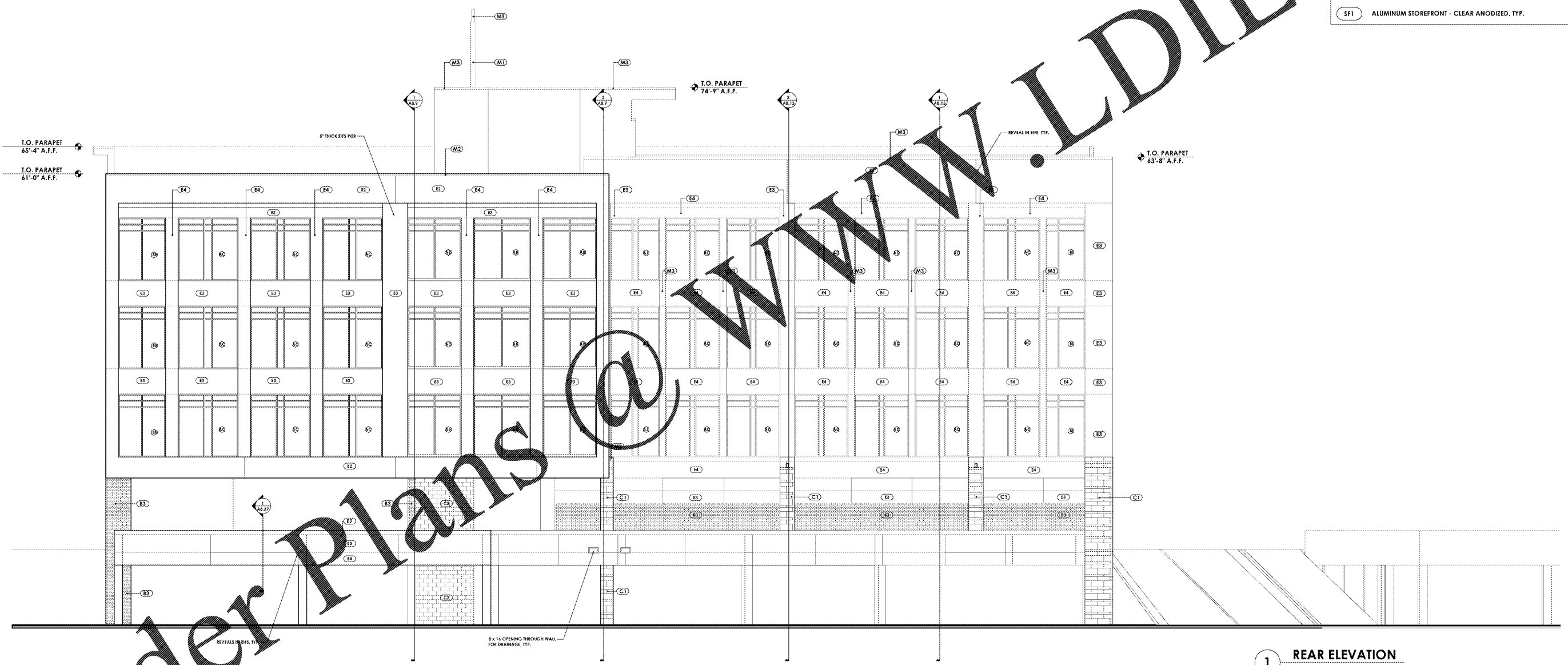
**REVISIONS**

NO.	DATE	DESCRIPTION

PROJECT: 1342  
DATE: 04/06/17  
DRAWN BY: JHB  
CHECKED BY: JDL

**REAR ELEVATION**

**A3.2**



**1 REAR ELEVATION**  
Scale: 1/8" = 1'-0"

/VOLUMES/F DRIVE/FINLEY DESIGN/PROJECTS/1342 WESTPOINT 2/DRAWINGS/1342 ELEVATIONS.DWG

Order Plans @

www.LDILine.com