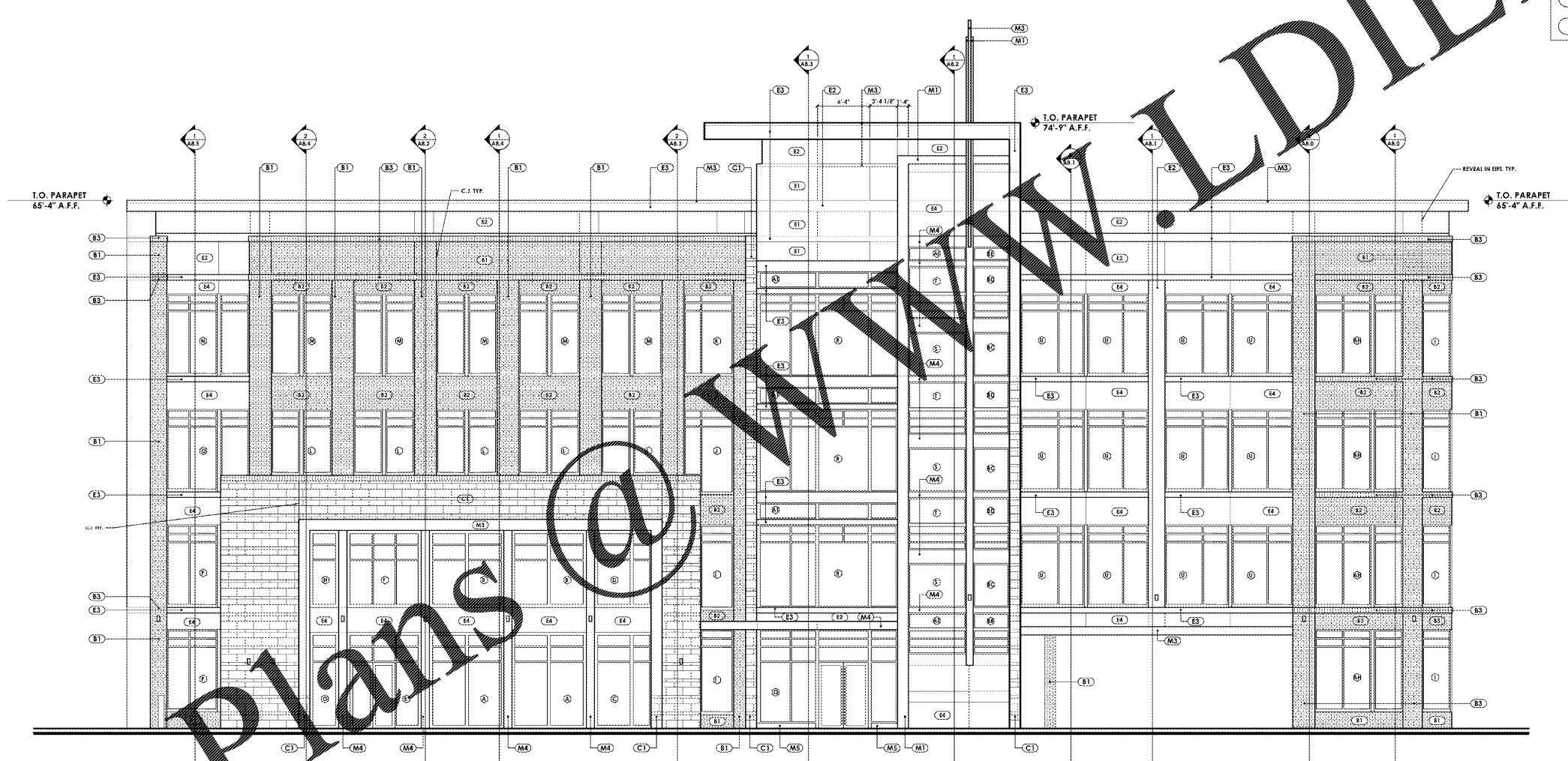


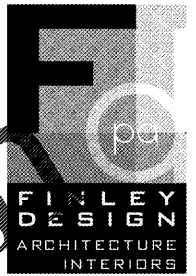
7:\VOLUMES\F DRIVE\FINLEY DESIGN\PROJECTS\1342 WESTPOINT 2\DRAWINGS\1342 ELEVATIONS.DWG

EXTERIOR MATERIAL LEGEND

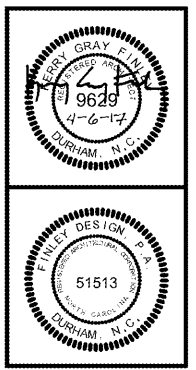
- (B1) BRICK - TAYLOR - 373 AUTUMN BLEND (BROWN)
- (B2) BRICK - TAYLOR - 370 AUTUMN BLEND (TAN)
- (B3) BRICK - TAYLOR - PEARL GRAY (LIGHT TAN)
- (C1) MASONRY VENEER - ROCKCAST MODULAR VENEER - SMOOTH WHEATSTONE (TO MATCH B3)
- (C2) CMU - ADAMS PRODUCTS - POLISHED FACE CLAY (TO MATCH B3)
- (E1) EIFS - SW6146 UMBER (BROWN)
- (E2) EIFS - SW2823 ROCKWOOD CLAY (TAN)
- (E3) EIFS - SW6142 MACADAM (LIGHT TAN)
- (E4) EIFS - SW7600 ELLIE GRAY (GRAY)
- (M1) METAL - BROWN (TO MATCH E1)
- (M2) METAL - LIGHT TAN (TO MATCH E2)
- (M3) METAL - LIGHT TAN (TO MATCH E3)
- (M4) METAL - GRAY (TO MATCH E4)
- (M5) METAL - BREAK METAL (TO MATCH STOREFRONT)
- (SF1) ALUMINUM STOREFRONT - CLEAR ANODIZED, TYP.



1 FRONT ELEVATION
Scale: 1/8" = 1'-0"



FINLEY DESIGN PA
7806 NC HWY 75 1
SUITE 110
DURHAM, NC 27713
919-493-8200
FINLEYDESIGNARCH.COM



WESTPOINT 2
DURHAM, NC

REVISIONS

NO.	DATE	DESCRIPTION

PROJECT: 1342
DATE: 04/06/17
DRAWN BY: JHB
CHECKED BY: JDL

FRONT ELEVATION

A3.0

Order Plans @

WWW.LDILINE.COM