

STATE OF NORTH CAROLINA DEPT. OF TRANSPORTATION DIVISION OF HIGHWAYS RALEIGH, N. C.

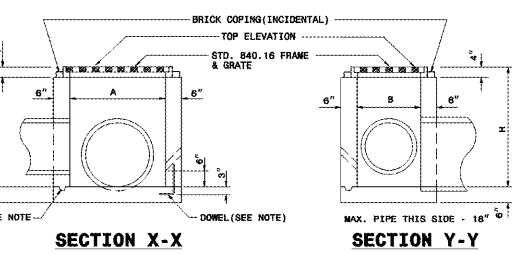
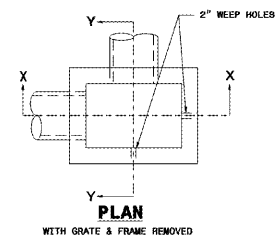
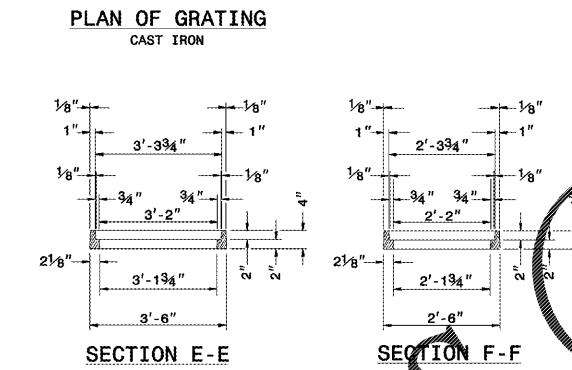
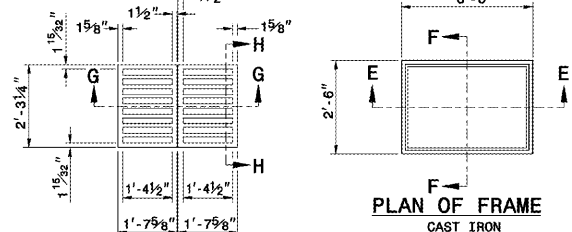
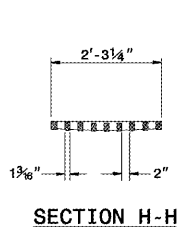
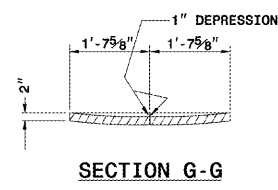


Table with 10 columns: PIPE, SPAN, WIDTH, MIN. HEIGHT, H, BOTTOM WALL PER CONG. IN BOX, CONC. IN BOX, C.M., R.C. Includes rows for 12, 15, 18, 24, and 30 inch pipes.

STATE OF NORTH CAROLINA DEPT. OF TRANSPORTATION DIVISION OF HIGHWAYS RALEIGH, N. C. ENGLISH STANDARD DRAWING FOR CONCRETE DROP INLET 12" THRU 30" PIPE

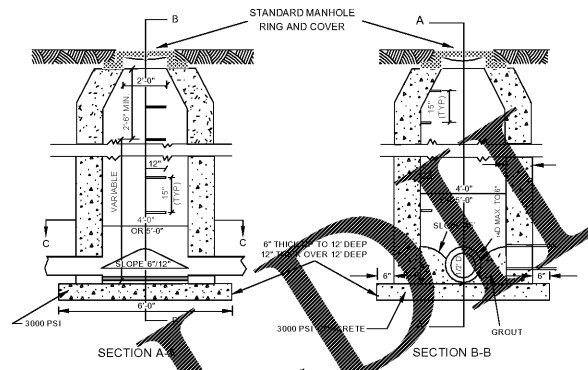
STATE OF NORTH CAROLINA DEPT. OF TRANSPORTATION DIVISION OF HIGHWAYS RALEIGH, N. C. ENGLISH STANDARD DRAWING FOR DROP INLET FRAME AND GRATES FOR USE WITH STD. DWS S 840.14 AND 840.15



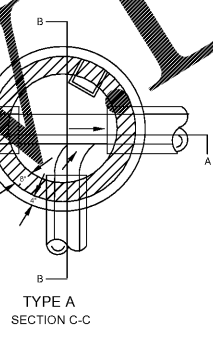
STATE OF NORTH CAROLINA DEPT. OF TRANSPORTATION DIVISION OF HIGHWAYS RALEIGH, N. C. ENGLISH STANDARD DRAWING FOR DROP INLET FRAME AND GRATES FOR USE WITH STD. DWS S 840.14 AND 840.15

TYPICAL MH FOR STORM SEWER

Table with 2 columns: PIPE SIZE, MH DIAMETER. Rows for 12-24, 30-42, 48, and 54 inch pipes.



- NOTES: 1. DEPTH MEASURED FROM TOP OF CASTING TO INVERT OF MANHOLE. 2. PRECAST MANHOLE COMPONENTS SHALL MEET ASTM-C-478 REQUIREMENTS. 3. SEE STANDARD SW-10.10 FOR MANHOLE COVER DETAIL. 4. DOMESTIC CASTINGS REQUIRED WITHIN STREET RIGHT-OF-WAY.



STANDARD CLASS "A" MANHOLE DETAIL NTS

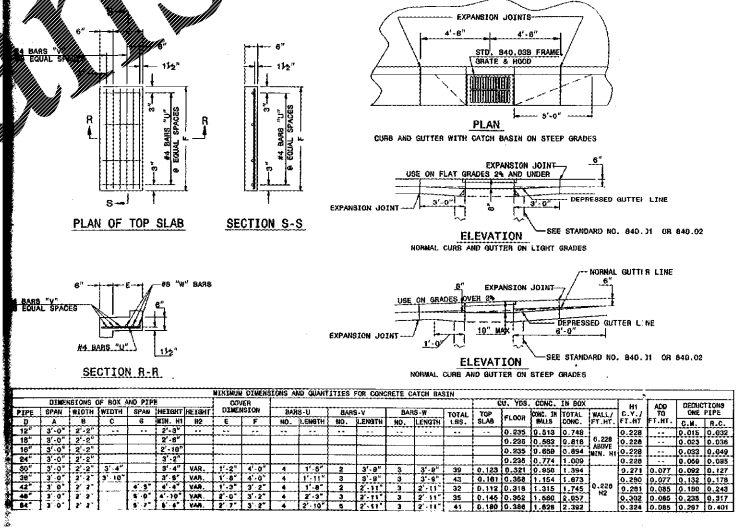
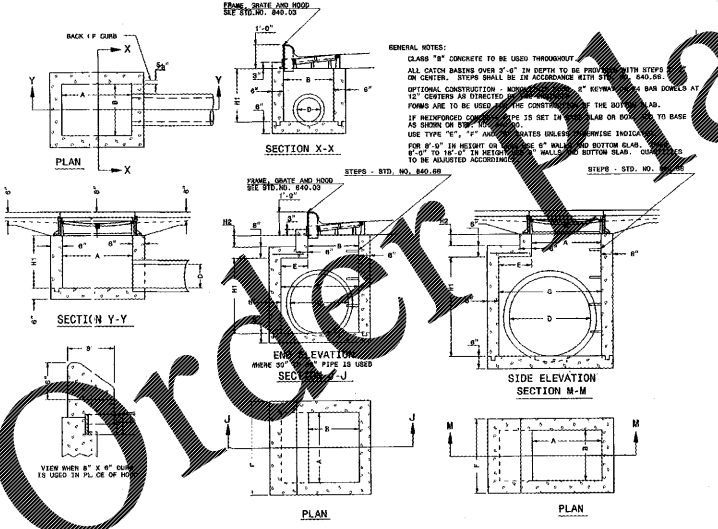


Table with 15 columns: MINIMUM DIMENSIONS AND QUANTITIES FOR CONCRETE CATCH BASIN. Includes rows for various pipe sizes and basin dimensions.

CONCRETE CATCH BASIN, 12" THRU 54" PIPE N.C.D.O.T. STANDARD 840.02

FINAL DESIGN RELEASED FOR CONSTRUCTION

CITY OF DURHAM PUBLIC WORKS DEPARTMENT APPROVED. Includes signature lines for Engineering, Storm Water, and Transportation, along with Date fields.

Table with 2 columns: NO., REVISIONS. Includes a date field.

CE GROUP logo and contact information: 301 GLENWOOD AVE. 220 RALEIGH, NC 27603. PHONE: 919-367-8790. FAX: 919-322-0032. License # C-1739.



LOT 6 CONSTRUCTION PLANS FOR WESTPOINT AT 751 NC HIGHWAY 751 SOUTH, TRIANGLE TOWNSHIP, DURHAM, NC 27715. STORM DRAINAGE DETAILS

Date: MARCH, 2017. Scale: N/A. Drawn: JPD. Checked: MPA. Project No: 200-103. Computer Dwg. Name: 200-103_Sht-09-Con-SD-Details-031617.

Sheet No: 9 Of 9