

JON E. ECKHARDT, P.E.
License No. 004117
233 S.E. Highland Road, Suite 100
Springfield, Missouri 65804
Phone: 417.862.0000
Fax: 417.861.0009

Professional Engineer
No. 04117
E. Eckhardt
No. 04117

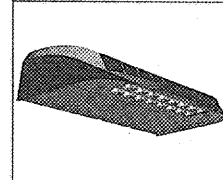
CRIG A. SCNEIDER, AIA
ARCHITECT
1736 EAST SUNSHINE, SUITE 417
SPRINGFIELD, MISSOURI 65804
e-mail: architect@eclairsteel.com

PROJECT: NEW OREILLY AUTO PARTS STORE
SLIDING HILL PLACE
(ASHLAND, VA #2 - ASHLAND MAGISTERIAL DISTRICT)
SITE ELECTRICAL DETAILS

O'Reilly AUTO PARTS
CORPORATE OFFICES
333 SOUTH PATTERSON
SPRINGFIELD, MISSOURI 65802
(417) 862-2674 TELEPHONE

COMM # 3993
DATE: 2-24-17
REVISION DATE: 8-16-17

MIRADA WALL SCONCE (XWM)



LED LIGHTING FACTS
Department of Energy has verified representative product test data and results in accordance with its Lighting Facts Program. Visit www.lightingfacts.com for specific testing ratings.

LIGHT OUTPUT - XWM		
Beam Angle	Wattage	LFW
3.5	25.5	11
6.5	41.7	45
10	60.0	59
15	83.0	62

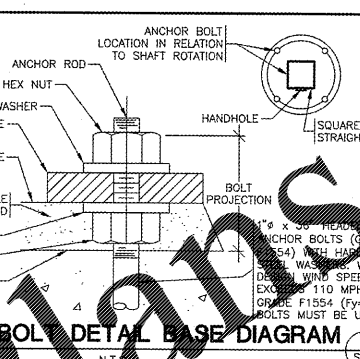
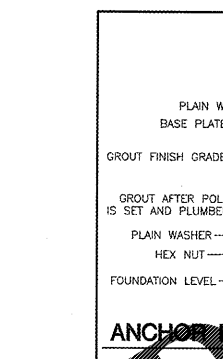
LUMINAIRE ORDERING INFORMATION
TYPICAL ORDER EXAMPLE: XWM FT LED 08 50 UE WHT IMS

Order Description	Quantity
1 x XWM FT LED 08 50 UE WHT IMS	1

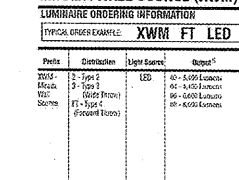
ACCESSORY ORDERING INFORMATION (Accessories are sold separately)

Accessories	Order Number
LED Driver	481001
LED Driver (with remote control)	481002
LED Driver (with dimmer switch)	481003
LED Driver (with motion sensor)	481004
LED Driver (with occupancy sensor)	481005
LED Driver (with photocell)	481006
LED Driver (with remote control, dimmer switch, motion sensor, occupancy sensor, photocell)	481007

OPERATING TEMPERATURE -40°C to +50°C (-40°F to +122°F)
FINISH - Fixture is finished with LSI's Durabond[®] polyester powder coat finishing process. The Durabond finish withstands extreme weather changes without cracking or peeling.



MIRADA WALL SCONCE (XWM)



LED LIGHTING FACTS
Department of Energy has verified representative product test data and results in accordance with its Lighting Facts Program. Visit www.lightingfacts.com for specific testing ratings.

LIGHT OUTPUT - XWM		
Beam Angle	Wattage	LFW
3.5	25.5	11
6.5	41.7	45
10	60.0	59
15	83.0	62

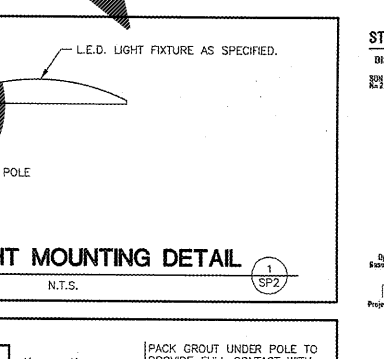
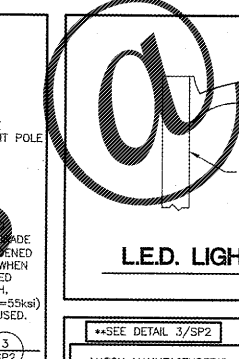
LUMINAIRE ORDERING INFORMATION
TYPICAL ORDER EXAMPLE: XWM FT LED 08 50 UE WHT IMS

Order Description	Quantity
1 x XWM FT LED 08 50 UE WHT IMS	1

ACCESSORY ORDERING INFORMATION (Accessories are sold separately)

Accessories	Order Number
LED Driver	481001
LED Driver (with remote control)	481002
LED Driver (with dimmer switch)	481003
LED Driver (with motion sensor)	481004
LED Driver (with occupancy sensor)	481005
LED Driver (with photocell)	481006
LED Driver (with remote control, dimmer switch, motion sensor, occupancy sensor, photocell)	481007

OPERATING TEMPERATURE -40°C to +50°C (-40°F to +122°F)
FINISH - Fixture is finished with LSI's Durabond[®] polyester powder coat finishing process. The Durabond finish withstands extreme weather changes without cracking or peeling.



LED AREA LIGHTS - LSI MIRADA (XALM)



LED LIGHTING FACTS
Department of Energy has verified representative product test data and results in accordance with its Lighting Facts Program. Visit www.lightingfacts.com for specific testing ratings.

LIGHT OUTPUT - XALM		
Beam Angle	Wattage	LFW
3.5	25.5	11
6.5	41.7	45
10	60.0	59
15	83.0	62

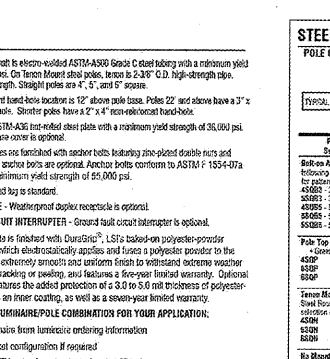
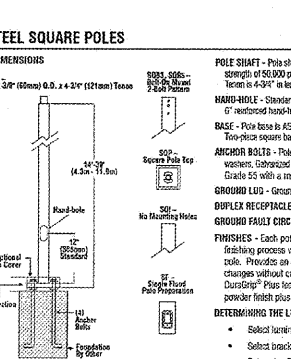
LUMINAIRE ORDERING INFORMATION
TYPICAL ORDER EXAMPLE: XALM FT LED H080 H010 WHT

Order Description	Quantity
1 x XALM FT LED H080 H010 WHT	1

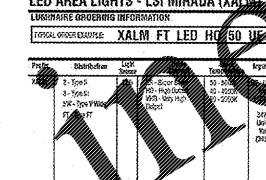
ACCESSORY ORDERING INFORMATION (Accessories are sold separately)

Accessories	Order Number
LED Driver	481001
LED Driver (with remote control)	481002
LED Driver (with dimmer switch)	481003
LED Driver (with motion sensor)	481004
LED Driver (with occupancy sensor)	481005
LED Driver (with photocell)	481006
LED Driver (with remote control, dimmer switch, motion sensor, occupancy sensor, photocell)	481007

OPERATING TEMPERATURE -40°C to +50°C (-40°F to +122°F)
FINISH - Fixture is finished with LSI's Durabond[®] polyester powder coat finishing process. The Durabond finish withstands extreme weather changes without cracking or peeling.



LED AREA LIGHTS - LSI MIRADA (XALM)



LED LIGHTING FACTS
Department of Energy has verified representative product test data and results in accordance with its Lighting Facts Program. Visit www.lightingfacts.com for specific testing ratings.

LIGHT OUTPUT - XALM		
Beam Angle	Wattage	LFW
3.5	25.5	11
6.5	41.7	45
10	60.0	59
15	83.0	62

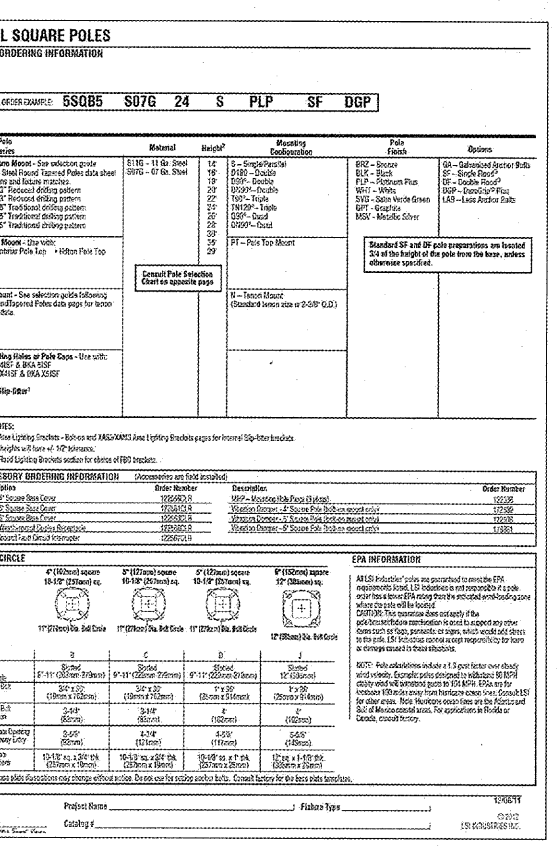
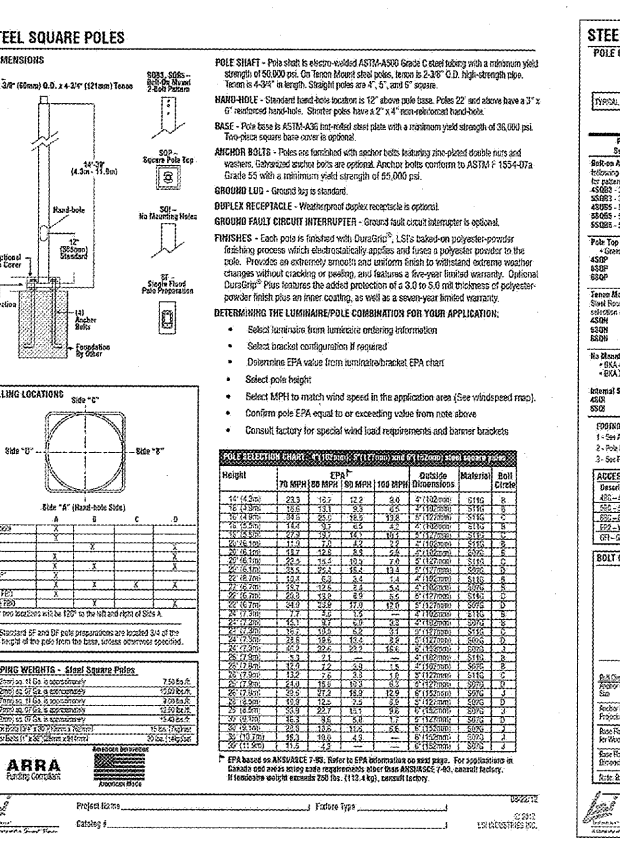
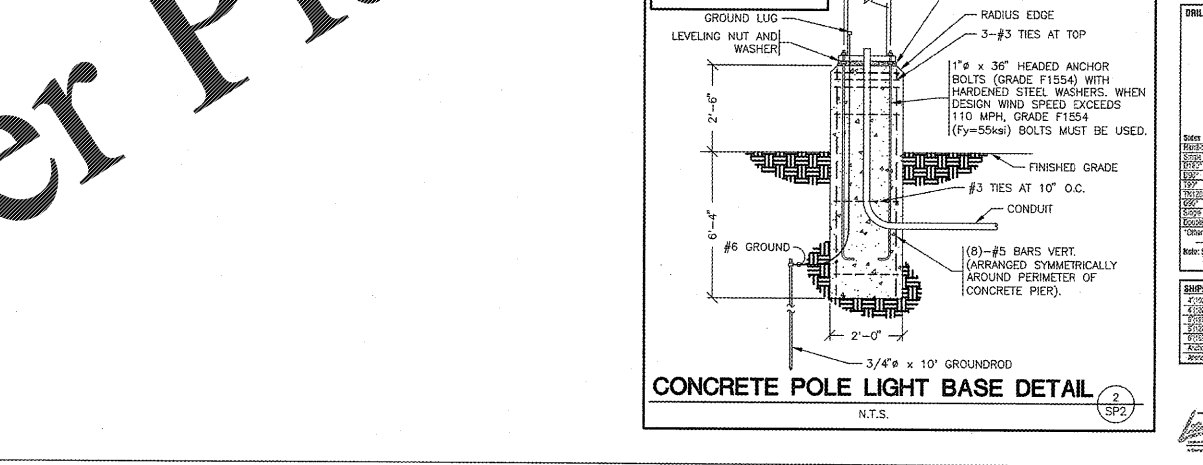
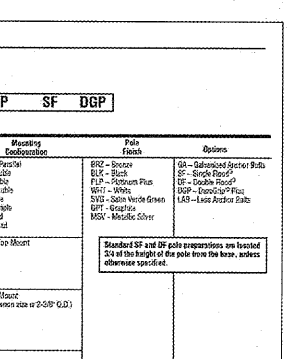
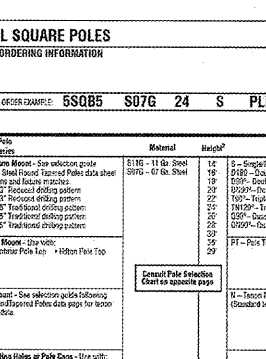
LUMINAIRE ORDERING INFORMATION
TYPICAL ORDER EXAMPLE: XALM FT LED H080 H010 WHT

Order Description	Quantity
1 x XALM FT LED H080 H010 WHT	1

ACCESSORY ORDERING INFORMATION (Accessories are sold separately)

Accessories	Order Number
LED Driver	481001
LED Driver (with remote control)	481002
LED Driver (with dimmer switch)	481003
LED Driver (with motion sensor)	481004
LED Driver (with occupancy sensor)	481005
LED Driver (with photocell)	481006
LED Driver (with remote control, dimmer switch, motion sensor, occupancy sensor, photocell)	481007

OPERATING TEMPERATURE -40°C to +50°C (-40°F to +122°F)
FINISH - Fixture is finished with LSI's Durabond[®] polyester powder coat finishing process. The Durabond finish withstands extreme weather changes without cracking or peeling.



Order Plans

H:\009\089\01\089\23 Feb 2017 - 10:25 am