

RECEIVED
12/03/2017
TABLE 1703 237
SPRINGFIELD, MO

EXTERIOR LIGHT FIXTURE SCHEDULE														
ALL ITEMS LISTED ON THE "LIGHT FIXTURE SCHEDULE" WILL BE SUPPLIED BY THE OWNER (O'REILLY). ITEMS SHALL BE DIRECT ORDERED AND OR RELEASED FROM THE LISTED ELECTRICAL EQUIPMENT DISTRIBUTOR:				GRAYBAR ELECTRIC CO. INC. 11885 LACKLAND ROAD ST. LOUIS, MO 63146				GRAYBAR O'REILLY TEAM EMAIL: oreilly@graybar.com TOLL FREE: (314) 573-2080						
LABEL/ MARK	SYMBOL	MFR.	CATALOG NUMBER	SUPPLY VOLTAGE	FINISH	MOUNTING		LAMPS		LUMINAIRE QUANTITY	LUMINAIRE WATTS	LUMINAIRE LUMENS	LIGHT LOSS FACTOR (LLF)	NOTES
						SURFACE WALL	OTHER	FLUORESCENT	LED					
LED EXTERIOR LIGHTS														
WP1	⌂	LSI	XWM-FT-LED-06-50-UE-BRZ NO SUBSTITUTIONS	120	DARK BRONZE	X		X		5	59	6,609	1.0	ARCHITECTURAL ELEVATIONS SHOW DIMENSIONED LOCATIONS. FULL CUT-OFF.
W1	⌂	LSI	XWM-FT-LED-03-50-UE-BRZ NO SUBSTITUTIONS	120	DARK BRONZE	X		X		1	29	3,410	1.0	ARCHITECTURAL ELEVATIONS SHOW DIMENSIONED LOCATIONS. FULL CUT-OFF.
LED POLE LIGHTS														
P1	⌂	LSI	XALM-3-LED-SS-50-UE-BRZ	120	DARK BRONZE	X	X	X		1	154	18,500	1.0	25' POLE LENGTH, FULL CUT-OFF, NO SUBSTITUTIONS. ANCHOR BOLTS W/HARDWARE & TEMPLATE.
			SSQB3-S11G-25-S-BRZ-LAB-5BC											
R1	⌂	LSI	XALM-3-LED-SS-50-UE-BRZ-IL	120	DARK BRONZE	X	X	X		2	154	18,500	1.0	25' POLE LENGTH, FULL CUT-OFF, NO SUBSTITUTIONS. ANCHOR BOLTS W/HARDWARE & TEMPLATE.
			SSQB3-S11G-25-S-BRZ-LAB-5BC											
FIXTURE QUANTITY TO BE VERIFIED WITH SITE PLAN QUANTITY														

PHOTOMETRIC CALCULATION SUMMARY:						
LABEL	CALC. TYPE	UNITS	AVERAGE	MAXIMUM	MINIMUM	MAXIMUM/MINIMUM
PARKING AREA	+	10x10 FOOT-CANDLE	3.0 F.C.	8.1 F.C.	0.6 F.C.	13.5:1

LIGHTING NOTE:
ALL FREE STANDING AND BUILDING MOUNTED LIGHTS ON THE SITE WILL BE DOWNWARD DIRECTIONAL FULL CUTOFF LIGHTING FIXTURES AND BE INSTALLED AT A ZERO (0) DEGREE HORIZONTAL PLANE

JOHN E. ECKHARDT, P.E.
License No. 04117
3033 E. Battlefield Road, Suite 1000
Springfield, Missouri 65802
Phone: 417.862.3265
Fax: 417.861.0053



CRAIG A. SCHNEIDER, AIA
ARCHITECT
1736 East Sunshine, Suite 417
Springfield, Missouri 65804
e-mail: architect@esteryschneider.com

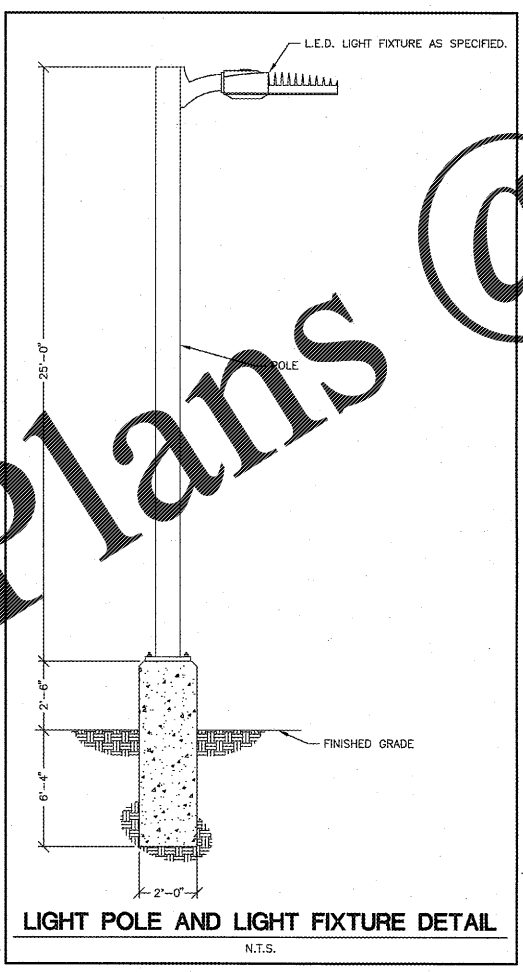
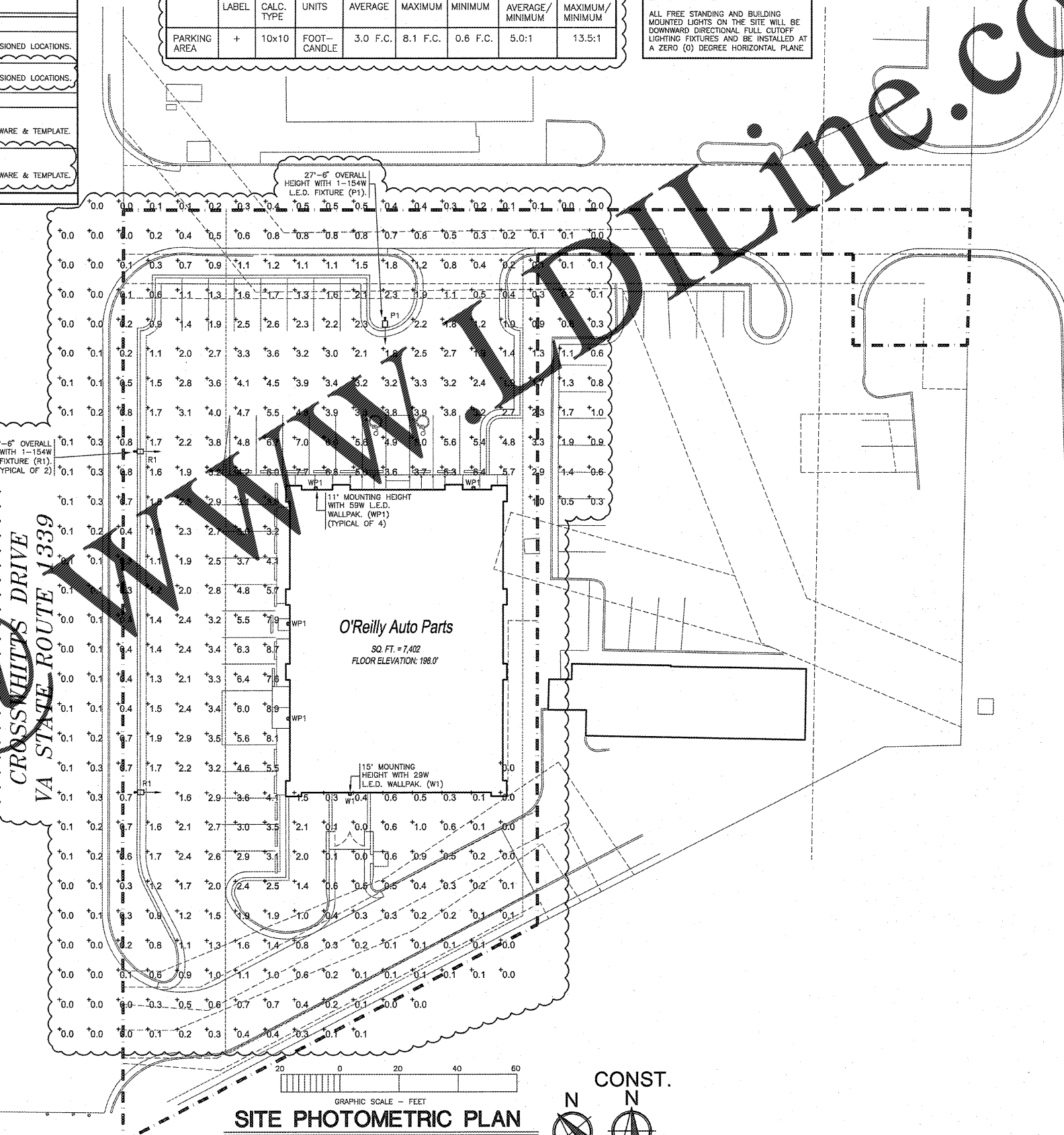
SLIDING HILL ROAD
VIRGINIA STATE ROUTE 656

PROJECT:
NEW O'REILLY AUTO PARTS STORE
SLIDING HILL PLACE
ASHLAND, VA #2 - ASHLAND MAGISTERIAL DISTRICT
SITE PHOTOMETRIC PLAN

O'Reilly AUTO PARTS
CORPORATE OFFICES
233 SOUTH PATTERSON
SPRINGFIELD, MISSOURI 65802
(417) 862-2674 TELEPHONE

COMM # 3093
DATE: 2-24-17
REVISION
DATE: 8-16-17
11-3-17

SP1 of 2



AUTOMATIC LIGHTING SHUTOFF
COMPLIANCE WITH ENERGY CODE IS ACHIEVED BY:
1. ONCE THE VENSTAR EMS HAS BEEN PROGRAMMED, THE INTERIOR AND EXTERIOR LIGHTS WILL TURN OFF AT THE FOLLOWING LOGIC: SEE SHEETS 1703-1, 1703-2 AND 1703-3
INTERIOR WORK LIGHTS WILL TURN ON WITH FIRST MOTION IN THE STORE AND WILL TURN OFF 15 MINUTES AFTER LAST MOTION ONCE THE STORE IS CLOSED.
INTERIOR SALES LIGHTS WILL TURN ON AT THE OPENING AND TURN OFF 15 MINUTES AFTER STORE CLOSING.
EXTERIOR SIGN LIGHTS WILL TURN ON WHEN IT IS DARK ENOUGH OUTSIDE ANYTIME THE STORE IS OPEN, AND WILL TURN OFF AT STORE CLOSING.
EXTERIOR LIGHTS WILL TURN ON WHEN IT IS DARK ENOUGH OUTSIDE AND IT IS WITHIN STORE HOURS OR THERE IS MOTION IN THE STORE. EXTERIOR LIGHTS WILL TURN OFF 30 MINUTES AFTER LAST MOTION ONCE THE STORE IS CLOSED.
FOR NEW CONSTRUCTION LOCATIONS ONLY, THERE IS A TEMPORARY PROGRAM TO KEEP SIGN AND SITE LIGHTS ON UNTIL MIDNIGHT RATHER THAN THE TIMES INDICATED ABOVE. O'REILLY WILL DISABLE THIS PROGRAM ONE YEAR AFTER STORE OPENING.
2. RESTROOMS AND OFFICES: ALL LIGHTING IN THESE AREAS ARE CONTROLLED BY OCCUPANT-SENSING DEVICES.

14:\CRE\0986\1\088587 7 Nov 2017 - 4:08 PM

Original Plans