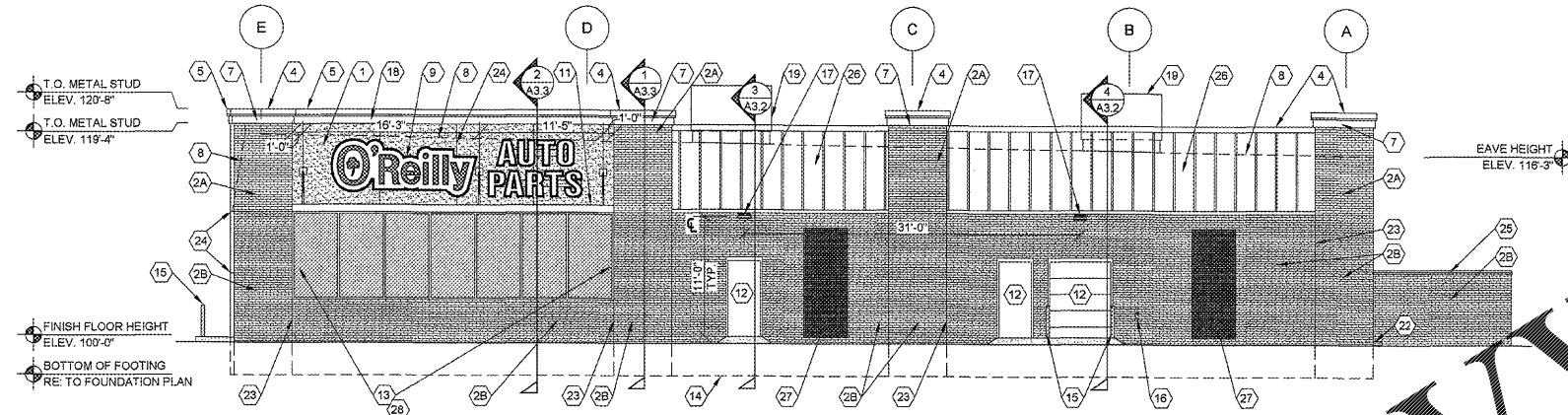


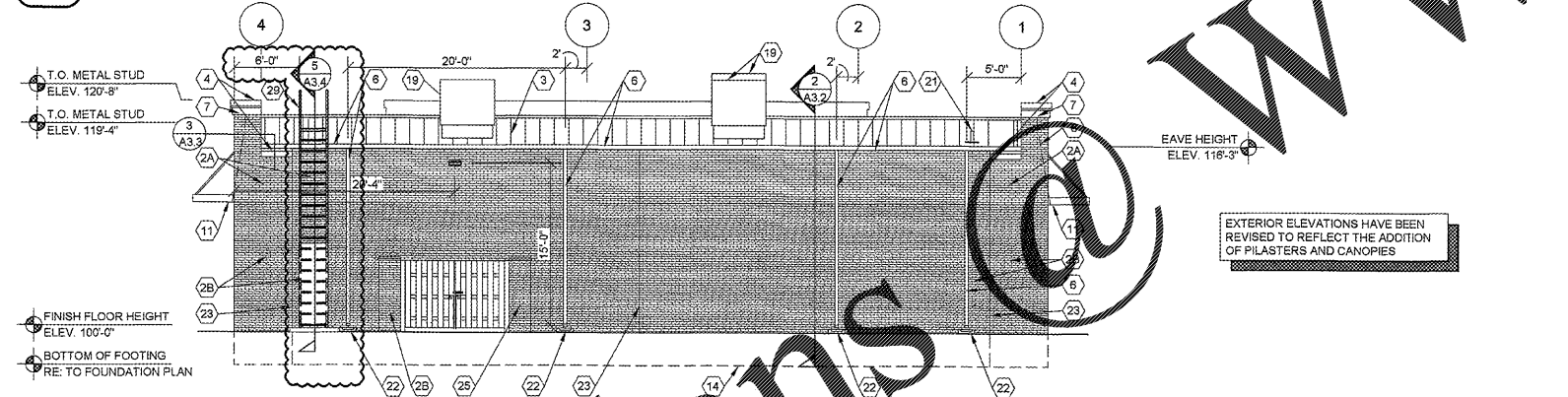
1 NORTH EXTERIOR ELEVATION

A2.1 SCALE: 1/8" = 1'-0"



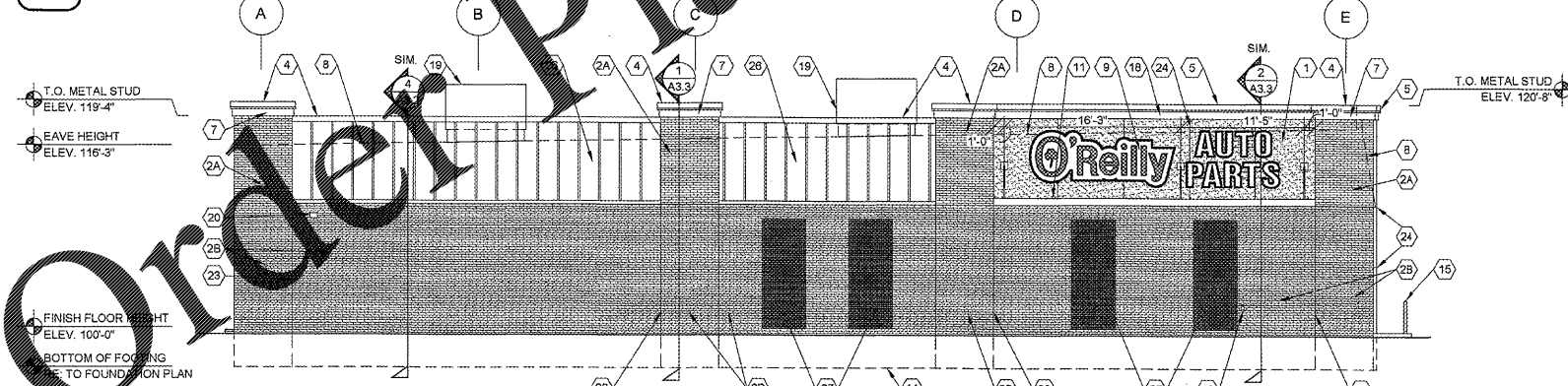
2 WEST EXTERIOR ELEVATION

A2.1 SCALE: 1/8" = 1'-0"



3 SOUTH EXTERIOR ELEVATION

A2.1 SCALE: 1/8" = 1'-0"



4 EAST EXTERIOR ELEVATION

A2.1 SCALE: 1/8" = 1'-0"

EXTERIOR FINISH SCHEDULE

EXTERIOR INSULATION AND FINISH SYSTEM (EIFS)
KEY NOTE NO. 1:
 MFG: DRYVIT SPECIFIED, EQUAL BY STO OR BASF (NO SUBSTITUTES)
 SERIES: OUTSULATION PLUS MD
 TEXTURE: SANDBLAST
 COLOR: DRYVIT "ORAPD1030S" STRATOTONE HIGH PERFORMANCE
 COLOR STANDARD: SHERWIN WILLIAMS "POSITIVE RED" SW6871 (SHER-CRYL) GLOSS

KEY NOTE NO. 7:
 MFG: DRYVIT SPECIFIED, EQUAL BY STO OR BASF (NO SUBSTITUTES)
 SERIES: OUTSULATION PLUS MD
 TEXTURE: SANDBLAST
 COLOR STANDARD: SHERWIN WILLIAMS "SOFTER TAN" SW6141 (SHER-CRYL) GLOSS

KEY NOTE NO. 18:
 MFG: DRYVIT SPECIFIED, EQUAL BY STO OR BASF (NO SUBSTITUTES)
 SERIES: OUTSULATION PLUS MD
 TEXTURE: SANDBLAST
 COLOR STANDARD: SHERWIN WILLIAMS "POSITIVE RED" SW6871 (SHER-CRYL) GLOSS

UNIT MASONRY
KEY NOTE NO. 2A:
 TYPE: CLAY MASONRY UNIT
 MFG: ACME BRICK
 SIZE: 2 1/4" X 3 5/8" X 7 5/8" (MODULAR)
 COURSING: RUNNING BOND
 COLOR: (ACCENT COLOR) BLEND 3000 BROWN VELOUR MORTAR COLOR: NATURAL GRAY

KEY NOTE NO. 2B:
 TYPE: CLAY MASONRY UNIT
 MFG: ACME BRICK
 SIZE: 2 1/4" X 3 5/8" X 7 5/8" (MODULAR)
 COURSING: RUNNING BOND
 COLOR: (FIELD COLOR) BLEND 600 BROWN VELOUR MORTAR COLOR: NATURAL GRAY

FLASHING AND SHEET METAL
KEY NOTE NO. 3:
 TYPE: STANDING SEAM "MVP" ROOF PANEL SYSTEM
 MFG: (REFER TO PRE-ENGINEERED METAL BUILDING SHOP DRAWINGS)
 FINISH: PREFINISHED
 COLOR: EQUAL TO BUTLER BUILDING "COOL BIRCH WHITE"

KEY NOTE NO. 4:
 TYPE: CAP FLASHING (FIELD BREAK) AT CORNICE AND STANDING SEAM
 MFG: (REFER TO PRE-ENGINEERED METAL BUILDING SHOP DRAWINGS)
 FINISH: PREFINISHED
 COLOR: EQUAL TO BUTLER BUILDING "COOL BIRCH WHITE"

KEY NOTE NO. 5:
 TYPE: CAP FLASHING (FIELD BREAK) AT RED EXTERIOR INSULATION FINISH SYSTEM (EIFS)
 MFG: (REFER TO PRE-ENGINEERED METAL BUILDING SHOP DRAWINGS)
 FINISH: FACTORY PRIMED AND FIELD PAINT
 COLOR: SHERWIN WILLIAMS "POSITIVE RED" SW6871 (SHER-CRYL) GLOSS WITH SHERWIN WILLIAMS THREE COMPONENT (8651105 / 8651105 / 8651105) CLEAR URETHANE

KEY NOTE NO. 6:
 TYPE: GUTTER AND DOWNSPOUTS
 MFG: (REFER TO PRE-ENGINEERED METAL BUILDING SHOP DRAWINGS)
 FINISH: PREFINISHED
 COLOR: EQUAL TO BUTLER BUILDING "COOL BIRCH WHITE"

KEY NOTE NO. 28:
 TYPE: STANDING SEAM "MVP" ROOF PANEL SYSTEM
 MFG: (REFER TO PRE-ENGINEERED METAL BUILDING SHOP DRAWINGS)
 FINISH: PREFINISHED
 COLOR: EQUAL TO CHIEF BUILDINGS "PARCHMENT"

DOORS AND WINDOWS
KEY NOTE NO. 12:
 TYPE: STEEL DOORS AND FRAMES (DOORS NO. 2 AND NO. 7)
 MFG: (OWNER FURNISHED / CONTRACTOR INSTALLED)
 FINISH: FACTORY PRIMED AND FIELD PAINT
 COLOR: SHERWIN WILLIAMS "LATTE" SW6108 (SEMI-GLOSS)

KEY NOTE NO. 13:
 TYPE: (REFER TO WINDOW SCHEDULE)
 MFG: EFCCO, KAWNEER, OR OLD CASTLE (VISTA WALL), (NO SUBSTITUTES)
 COLOR: EFCCO "IVY", KAWNEER "DARK IVY", VISTA WALL "INTERSTATE GREEN"

PAINTING
KEY NOTE NO. 15:
 TYPE: STEEL BOLLARDS (REFER TO CIVIL DRAWINGS)
 FINISH: FIELD PRIME AND PAINT
 COLOR: SHERWIN WILLIAMS "HUNT CLUB" SW6468 (SEMI-GLOSS)

GENERAL NOTES

- (A) REFER TO PROJECT MANUAL FOR ADDITIONAL REQUIREMENTS.
 - (B) REFER TO CIVIL DRAWINGS FOR ADDITIONAL REQUIREMENTS.
 - (C) REFER TO PLUMBING, MECHANICAL, AND ELECTRICAL DRAWINGS FOR SYSTEM TYPES AND ADDITIONAL REQUIREMENTS.
 - (D) REFER TO EXTERIOR FINISH SCHEDULE FOR MATERIAL TYPES.
 - (E) REFER TO PRE-ENGINEERED METAL BUILDING SHOP DRAWINGS FOR ADDITIONAL REQUIREMENTS.
 - (F) REFER TO SCOPE OF WORK SCHEDULE FOR ADDITIONAL REQUIREMENTS.
- KEY NOTES**
- (1) EXTERIOR INSULATION AND FINISH SYSTEM (EIFS).
 - (2A) CLAY MASONRY UNIT EXTERIOR WALL CONSTRUCTION (ACCENT COLOR) REFER TO PLANS, SECTIONS, AND DETAILS FOR ADDITIONAL REQUIREMENTS.
 - (2B) CLAY MASONRY UNIT EXTERIOR WALL CONSTRUCTION (FIELD COLOR) REFER TO PLANS, SECTIONS, AND DETAILS FOR ADDITIONAL REQUIREMENTS.
 - (3) PRE-ENGINEERED METAL BUILDING SHEET METAL ROOFING SYSTEM.
 - (4) PRE-ENGINEERED METAL BUILDING SHEET METAL FLASHING - FIELD BREAK
 - (5) PRE-ENGINEERED METAL BUILDING SHEET METAL FLASHING (AT RED EIFS) - FIELD BREAK
 - (6) PRE-ENGINEERED METAL BUILDING SHEET METAL GUTTER AND DOWNSPOUT SYSTEM.
 - (7) E.I.F.S. CORNICE (SOFTER TAN), REFER TO EXTERIOR FINISH SCHEDULE.
 - (8) LINE OF ROOF BEYOND WITH 1/4":12" SLOPE MINIMUM.
 - (9) SURFACE MOUNTED SIGN OWNER FURNISHED AND INSTALLED. PROVIDE BACKING FOR MOUNTING AND ROUGH-IN ELECTRICAL COORDINATE REQUIREMENTS WITH OWNER. REFER TO SHEET SG2.1.
 - (10) BUILDING ADDRESS NUMBERS IN 6" HIGH HELVETICA WHITE VINYL ADHERED TO EXTERIOR FACE OF GLAZING.
 - (11) PRE FABRICATED METAL CANOPY: EQUAL TO ARCHITECTURAL SHADE PRODUCTS (LARRY FISHER -770-213-2131) 8" FASCIA, 3'-0" PROJECTION, FLAT METAL CANOPY WITH HANGER RODS (1 1/4" SCHEDULE 40 PIPE), (COLOR TO BE GREEN TO MATCH CANOPY COLOR) (COORDINATE EXACT LOCATION OF ROD BRACING WITH APPROVED SIGNAGE PLANS SUBMITTED UNDER A SEPARATE SUBMITTAL TO AVOID CONFLICT WITH SIGN LOCATION) METAL DECKING - .065 EXTRUDED ALUMINUM IN 6" WIDE PANELS; MIL FINISH ALUMINUM TOP. EXPOSED BOTTOM SHALL BE POWDER COATED FINISH - GREEN TO MATCH STOREFRONT. PROVIDE TWO 3" DIAMETER ROUND DOWNSPOUTS TO EXTEND 3" BELOW CANOPY AT LOCATION SHOWN - GREEN TO MATCH STOREFRONT. PROVIDE 3RD PARTY ENGINEERED PLANS SEALED FOR THE STATE OF VIRGINIA. REFER TO WALL SECTIONS, AND STRUCTURAL.
 - (12) EXTERIOR DOOR AND FRAME SYSTEM. REFER TO FLOOR PLAN AND DOOR SCHEDULE FOR TYPES.
 - (13) EXTERIOR WINDOW SYSTEM. REFER TO FLOOR PLAN AND WINDOW SCHEDULE FOR TYPES.
 - (14) APPROXIMATE LINE OF FOUNDATION, REFER TO STRUCTURAL DRAWINGS.
 - (15) STEEL BOLLARDS, REFER TO CIVIL AND STRUCTURAL DRAWINGS.
 - (16) HOSE BIB, REFER TO PLUMBING DRAWINGS.
 - (17) LIGHT FIXTURE, REFER TO ELECTRICAL DRAWINGS.
 - (18) E.I.F.S. CORNICE (POSITIVE RED), REFER TO EXTERIOR FINISH SCHEDULE.
 - (19) MECHANICAL ROOF TOP UNIT, REFER TO MECHANICAL DRAWINGS.
 - (20) MECHANICAL WALL PENETRATIONS, REFER TO MECHANICAL DRAWINGS. PROVIDE FRAMING, FLASHING, AND SEALANT AS REQUIRED.
 - (21) PLUMBING ROOF VENT, REFER TO PLUMBING DRAWINGS AND DETAIL 1/A6.1.
 - (22) CONCRETE SPLASH BLOCK INSTALL AT EACH DOWNSPOUT.
 - (23) MASONRY CONTROL JOINT. PROVIDE SEALANT OVER 1/2" DIAMETER FOAM BACKER ROD. COLOR TO MATCH ADJACENT MASONRY.
 - (24) RUSTICATION JOINT, REFER TO DETAIL 6/A3.2.
 - (25) REFUSE ENCLOSURE, REFER TO 1/C2.3.
 - (26) STANDING SEAM "MVP" ROOF PANEL SYSTEM.
 - (27) CONTRACTOR TO INSTALL 4'-0" BY 10'-0" WALL MOUNTED "GREENSCREEN" OR APPROVED EQUAL TRELIS SYSTEM USING THE HARDWARE AND FASTENERS. TO BE INSTALLED PER MANUFACTURER REQUIREMENTS.
 - (28) APPLY TO THE INTERIOR SURFACE OF THE GLAZING SYSTEM 3M NIGHT VISION 15. SECONDLY, APPLY 3M FASARA MILANO OVER THE 3M NIGHT VISION 15. IF YOU HAVE ANY QUESTIONS, CONTACT 3M AT 630-964-1568.
 - (29) ALUMINUM ROOF ACCESS LADDER. REFER TO WALL SECTIONS FOR ADDITIONAL INFORMATION.



CRAIG A. SCHNEIDER, AIA
 ARCHITECT
 1736 East Sunshine, Suite 417
 Springfield, Missouri 65804
 Tel: 417.862.3245
 Fax: 417.862.3245
 e-mail: architect@estheticschneider.com

PROJECT:
 NEW O'REILLY AUTO PARTS STORE
 SLIDING HILL PLACE
 ASHLAND, VA #2 - ASHLAND MAGISTERIAL DISTRICT
EXTERIOR ELEVATIONS

O'Reilly AUTO PARTS
 CORPORATE OFFICES
 535 SOUTH PATTERSON
 ASHLAND, VA 23005
 (417) 862-2674 TELEPHONE

COMM #	9993
DATE:	2-24-17
REVISION	
DATE:	3-3-17
	8-16-17 2-12-18
	8-17-17
	11-3-17
	11-16-17

SPR-7-17
HTE 17-30000019